

DESIGN CONCEPT LLC.

TEL: 405/760-4955 • FAX: 405/602-0103

18166 N. WESTERN AVE. ENID, OK 73733

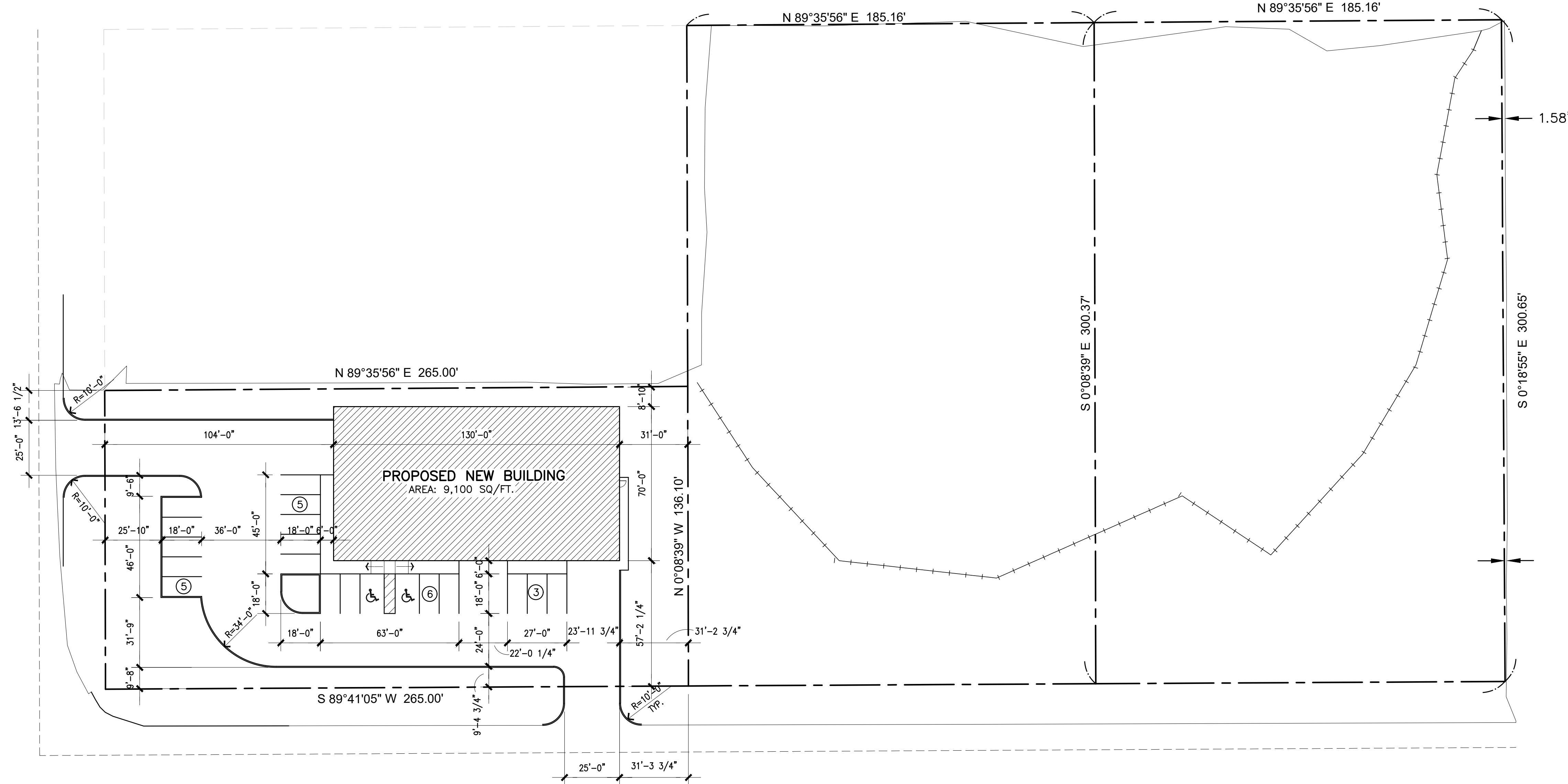
Revision:

-
-
-

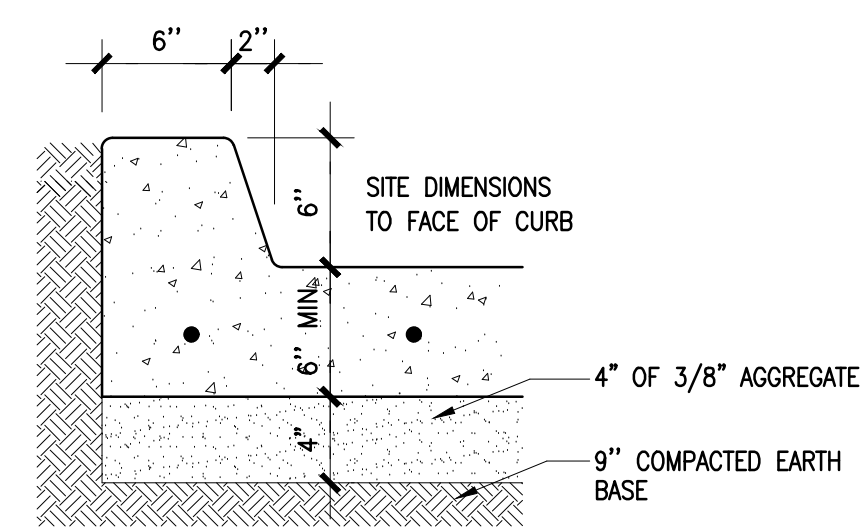
COPYRIGHT © 2022
ALL RIGHTS RESERVED

Project No:
• 23-0002
Date:
• 01-14-23
Sheet Scale:
• SEE PLAN
Drawn By:
•
Checked By:
•

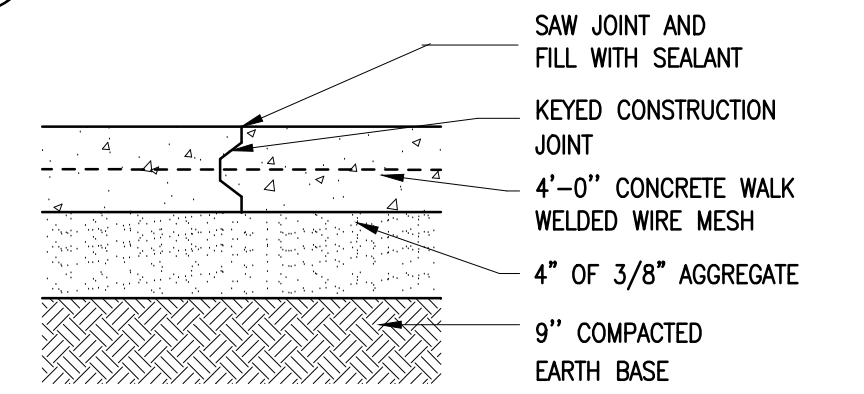
DRAWING NO.



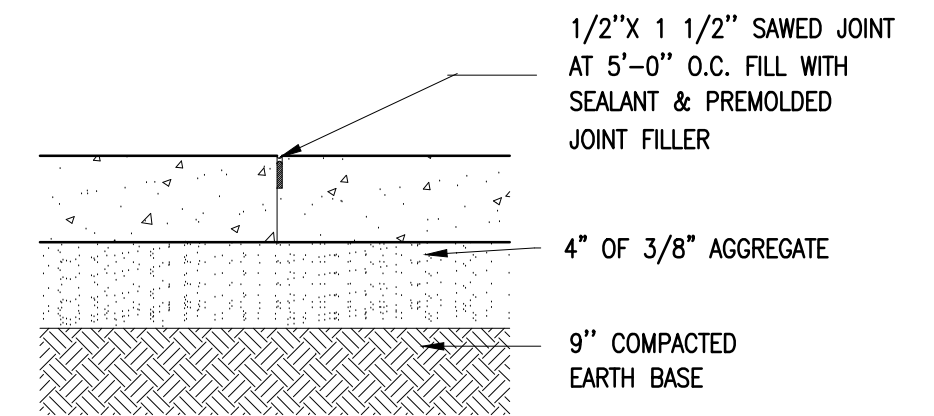
1 SITE PLAN
A1.1 SCALE: 1"=30'-0"



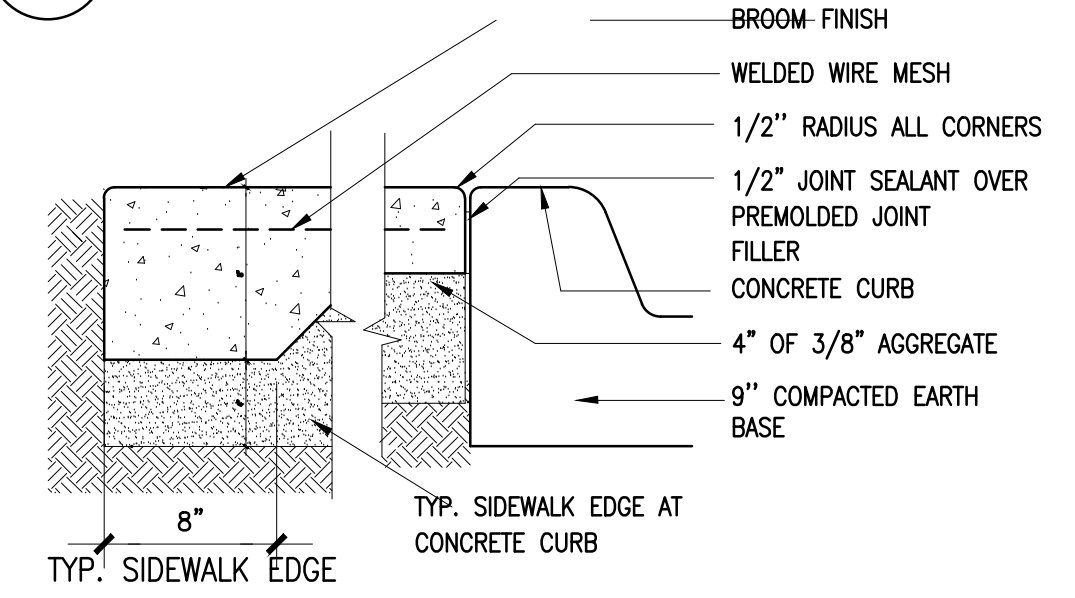
3 DETAIL AT CURB
SCALE: NTS



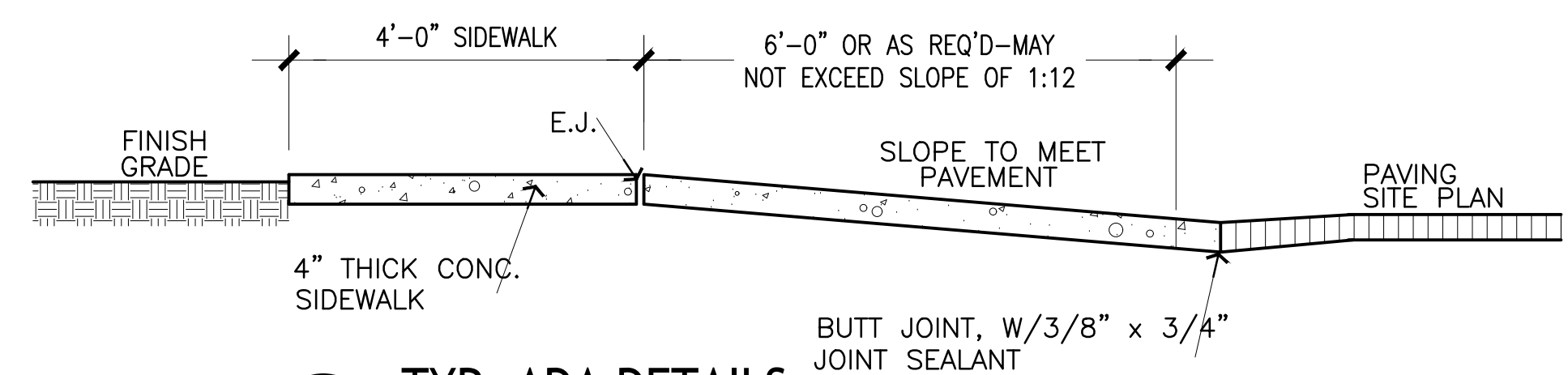
4 CONSTRUCTION JOINT
SCALE: NTS



5 SAW CUT CONTROL JOINT
SCALE: NTS

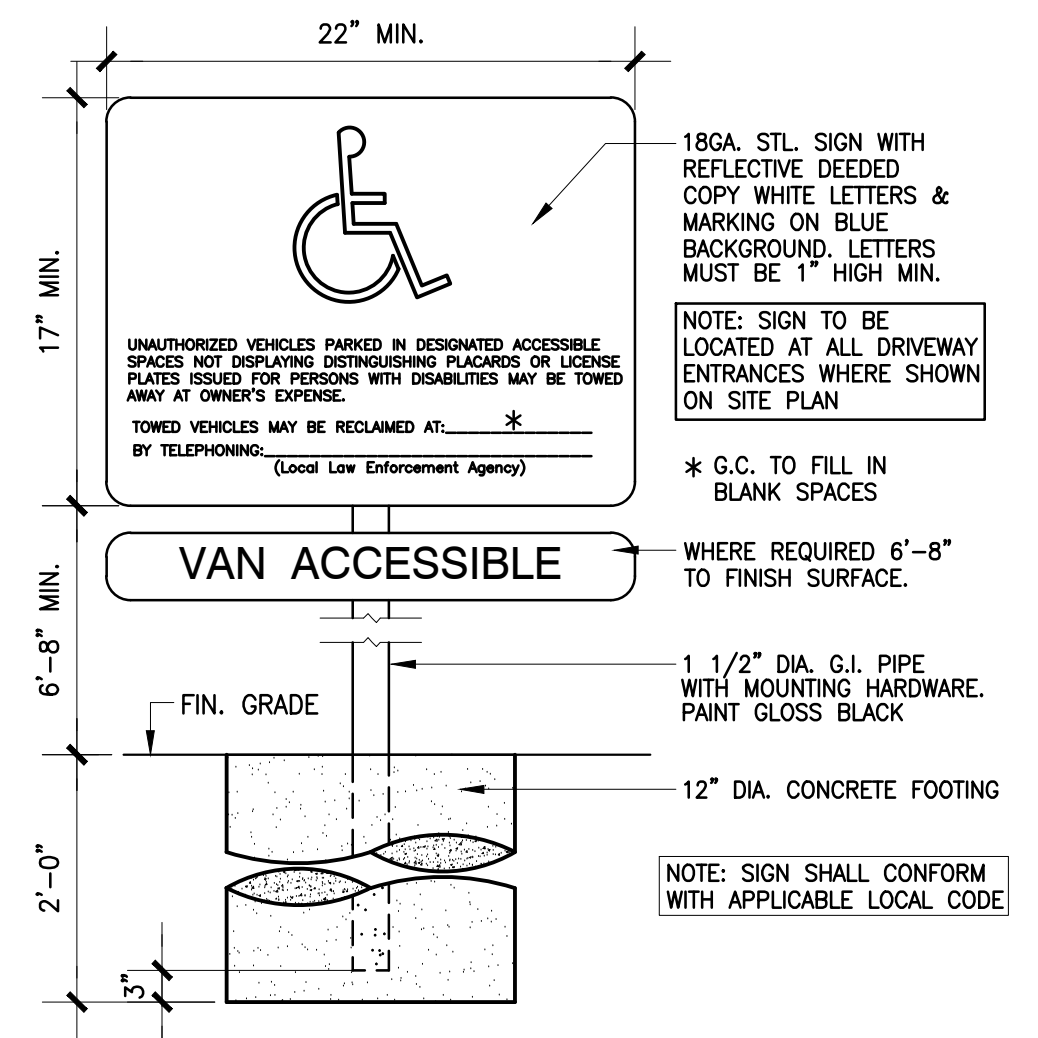


6 DETAIL AT SIDEWALK EDGE
SCALE: NTS

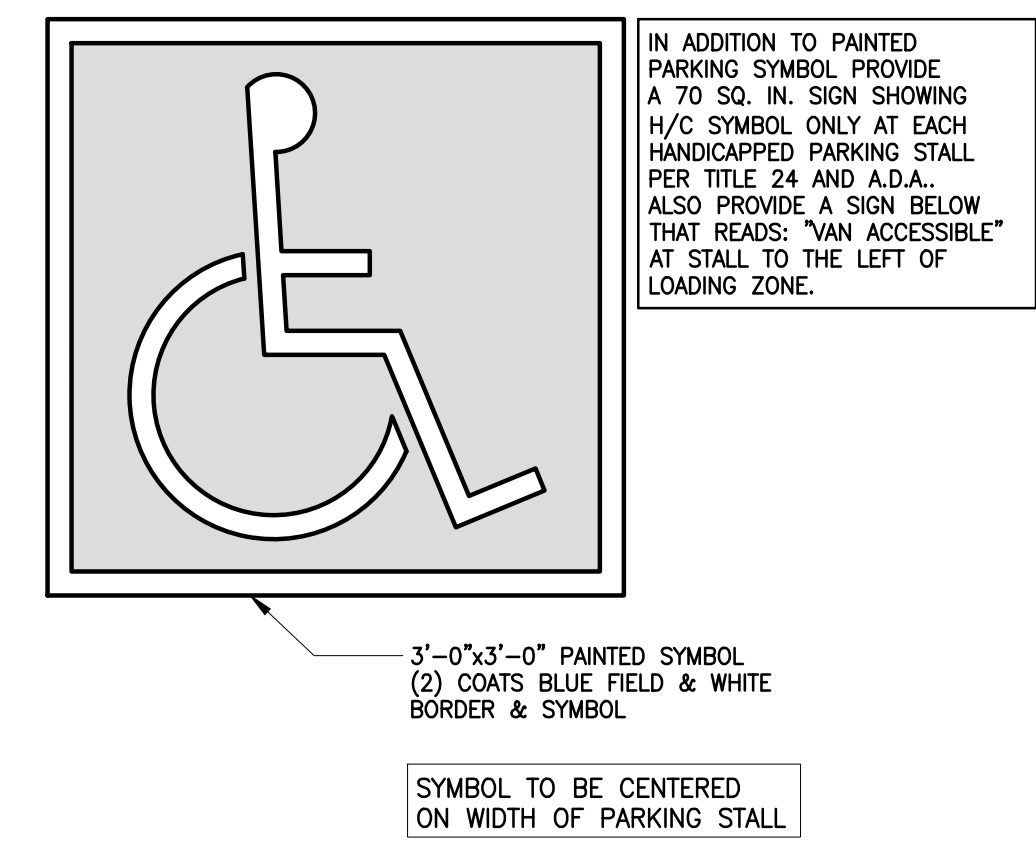


8 TYP. ADA DETAILS
NTS

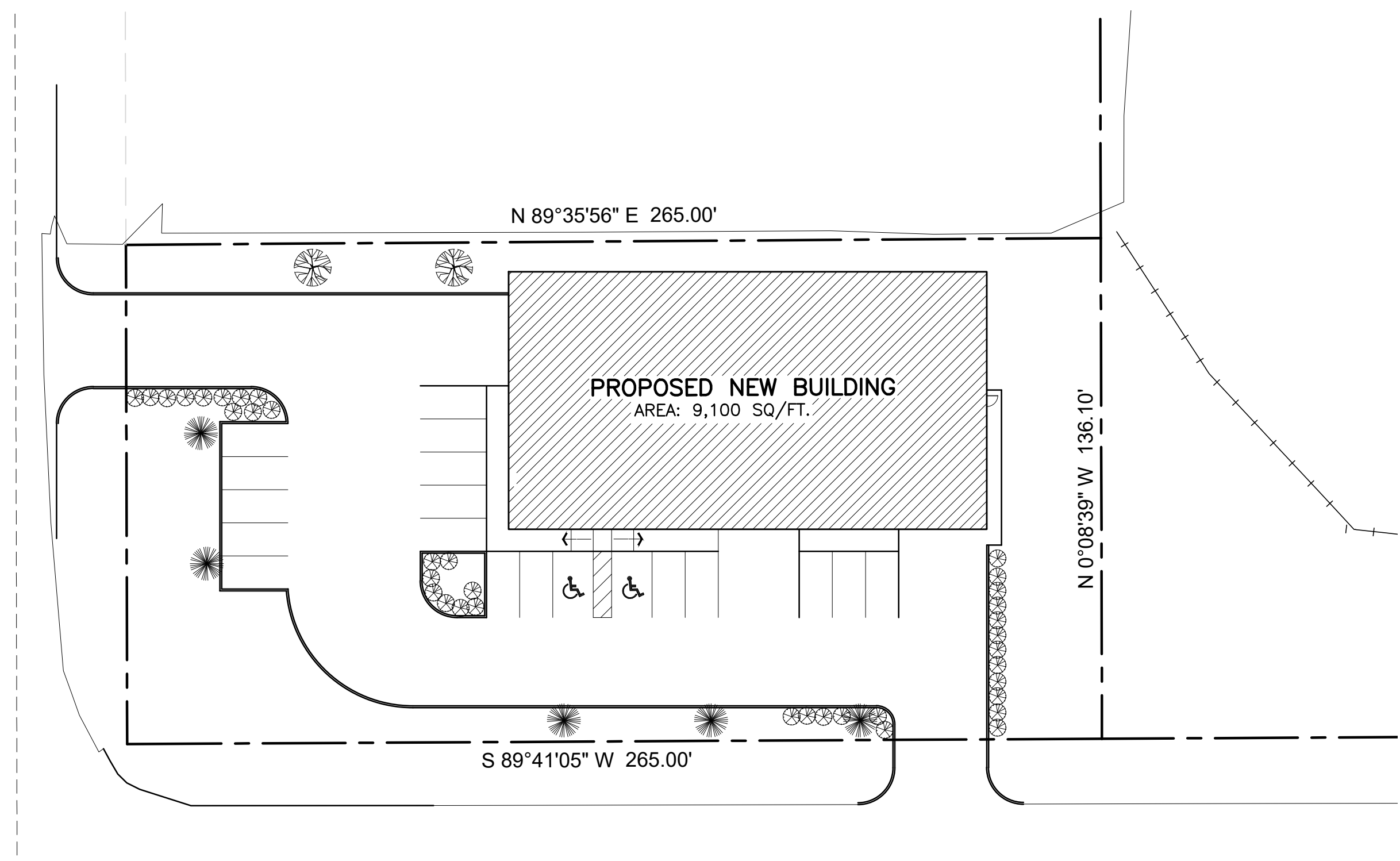
1. USE 1/2" X 4" PREMOLDED EXPANSION JOINT MATERIAL AROUND ALL POWER POLES OR OTHER STRUCTURES IN SIDEWALK.
2. 1" EXPANSION JOINTS TO BE 100' MAX.
3. SAW CUT JOINTS WITHIN 24 HOURS AFTER POURING.
4. THERE SHALL BE A LONGITUDINAL CONSTRUCTION JOINT INSTALLED WHEN WALK IS 8' OR GREATER.
5. WHEN TWO SIDEWALKS MERGE, THERE SHALL BE A 1" PREMOLDED EXPANSION JOINT FILLER PLACED PARALLEL W/ THE LONGER RUN OF SIDEWALK.
6. CONSTRUCTION JOINTS SHALL BE A MAX. OF 8' SPACING.
7. WHERE THE SIDEWALKS ABUT CURBS AND GUTTER OR A BUILDING THERE SHALL BE A 1/2" PREMOLDED EXPANSION JOINT FILLER PLACED BETWEEN THE SIDEWALK AND STRUCTURE.
8. CONSTRUCTION JOINTS SHALL HAVE 1/8" WIDTH 1" DEEP W/ 1/8" RADIUS AT THE EDGES OF THE JOINT.
9. EXPANSION JOINTS SHALL HAVE 1/8" RADIUS ON THE EDGES OF THE JOINT AND HAVE JOINT SEALANT AT LEAST 1/4" DEEP IN THE JOINT.
10. SUBGRADE OF SIDEWALK SHALL BE 6" COMPACTED TO AT LEAST 95% MAX. DENSITY.
11. USE FIBER MESH IN THE EXTERIOR CONC. IN LIEU OF STEEL REINFORCING.



2 ADA SIGNED DETAIL
A1.1 SCALE: 1/4"=1'-0"



2 ADA SIGNED DETAIL
A1.1 SCALE: 1/4"=1'-0"



SITE AREA: 36,117 SQ./FT.		POINT VALUE 25 POINTS
SITE DEVELOPED AREA: 36,117-5,000 =31,117 SQ./FT. 31,117/200		POINT VALUE 156 POINTS
PARKING REQUIRED: 18	CALCULATION X2	POINT VALUE 36 POINTS
PARKING PROVIDED: 19	CALCULATION X1	ADDED POINT VALUE 19 POINTS
		TOTAL POINT VALUE 236 POINTS REQUIRED

PLANT LEGEND

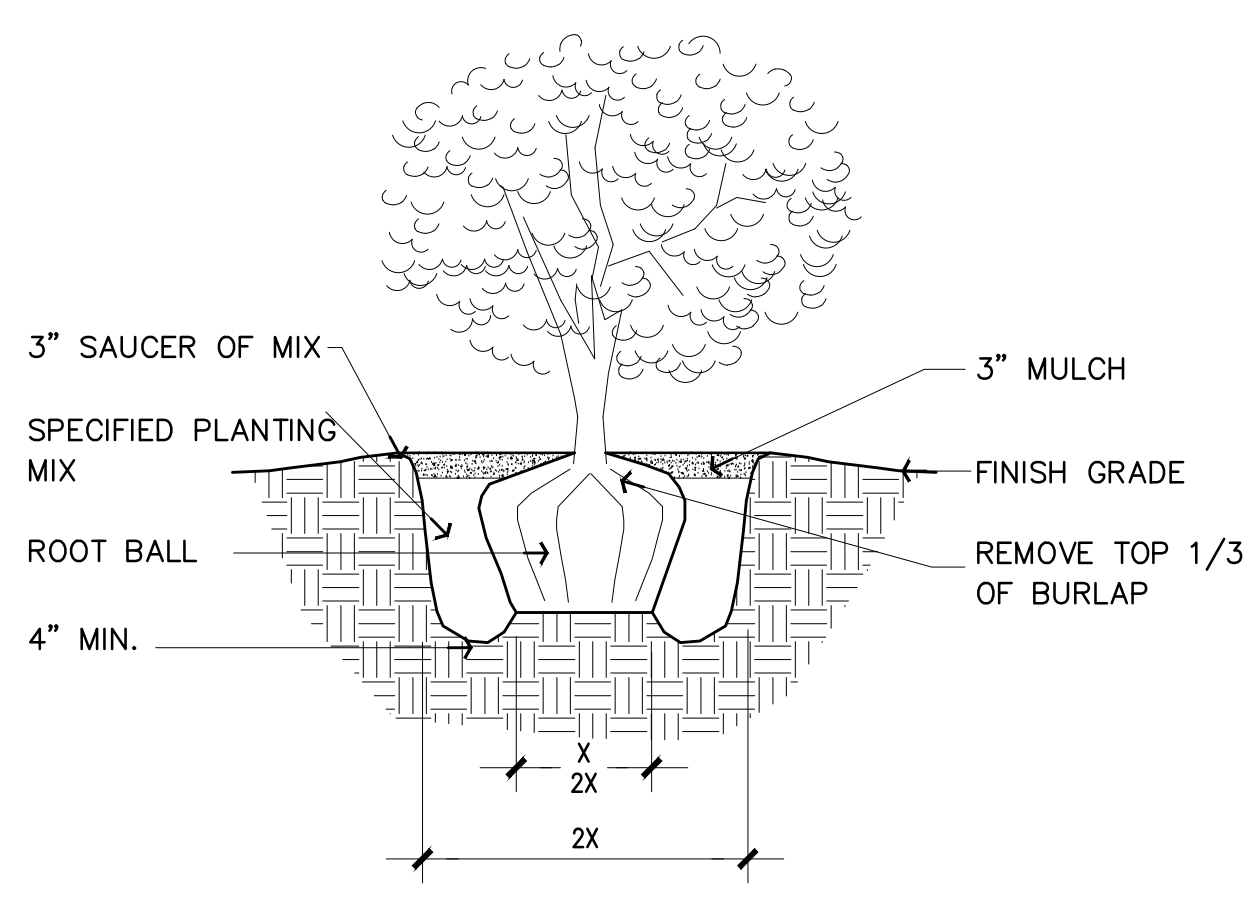
(2) 12' SLASH PINE BXB (EV)	24 UNITS
(5) 3" CALIPER SHUMARDI OAK	60 UNITS
(37) "NANA" NANDINAS 2 GAL.	74 UNITS
(710 Sq/Yd) TURF	177 UNITS

TOTAL : 335 POINTS PROVIDED

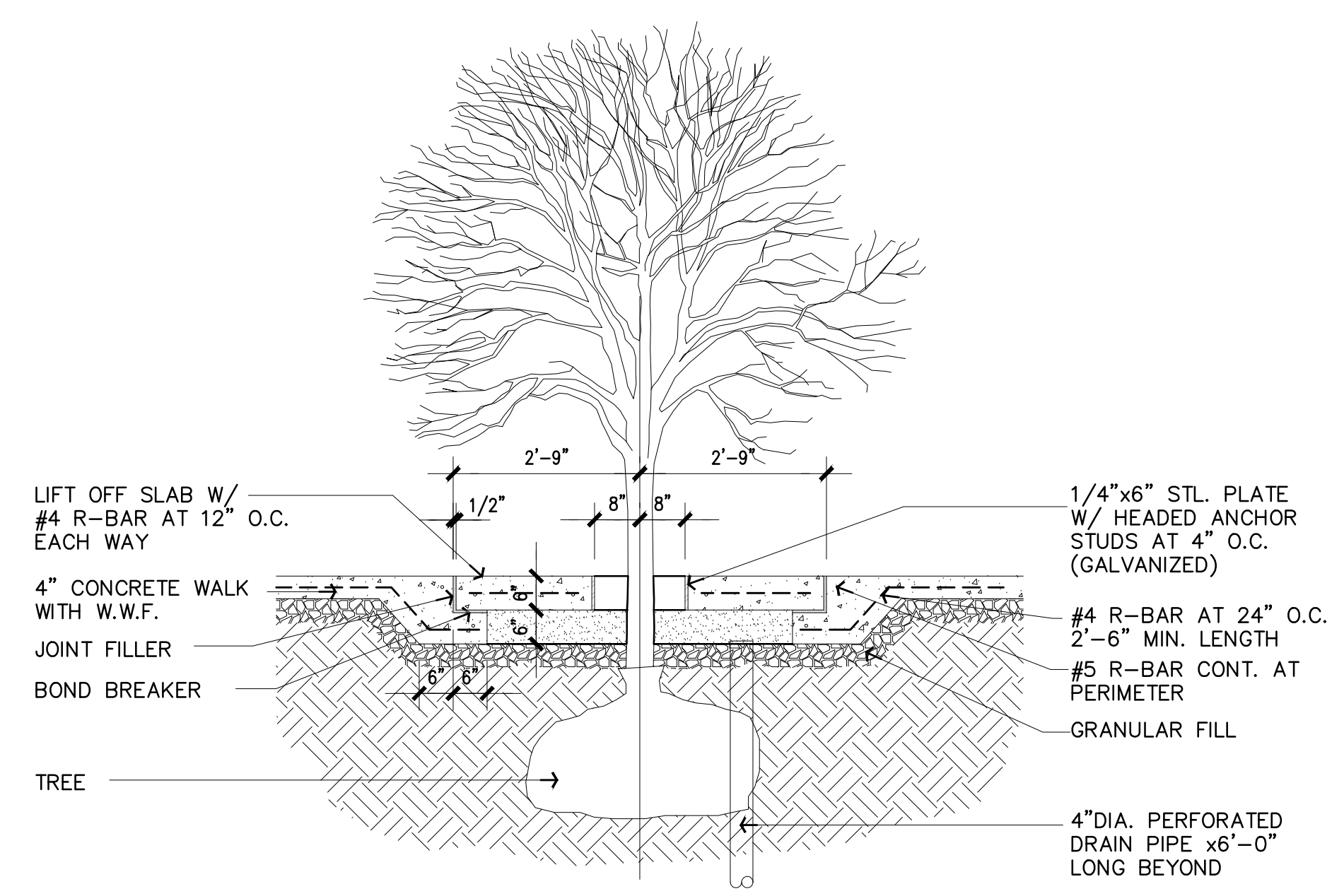
LEGEND

(EV) = EVERGREEN
(DEC) = DECIDUOUS
(PER) = PERENNIAL

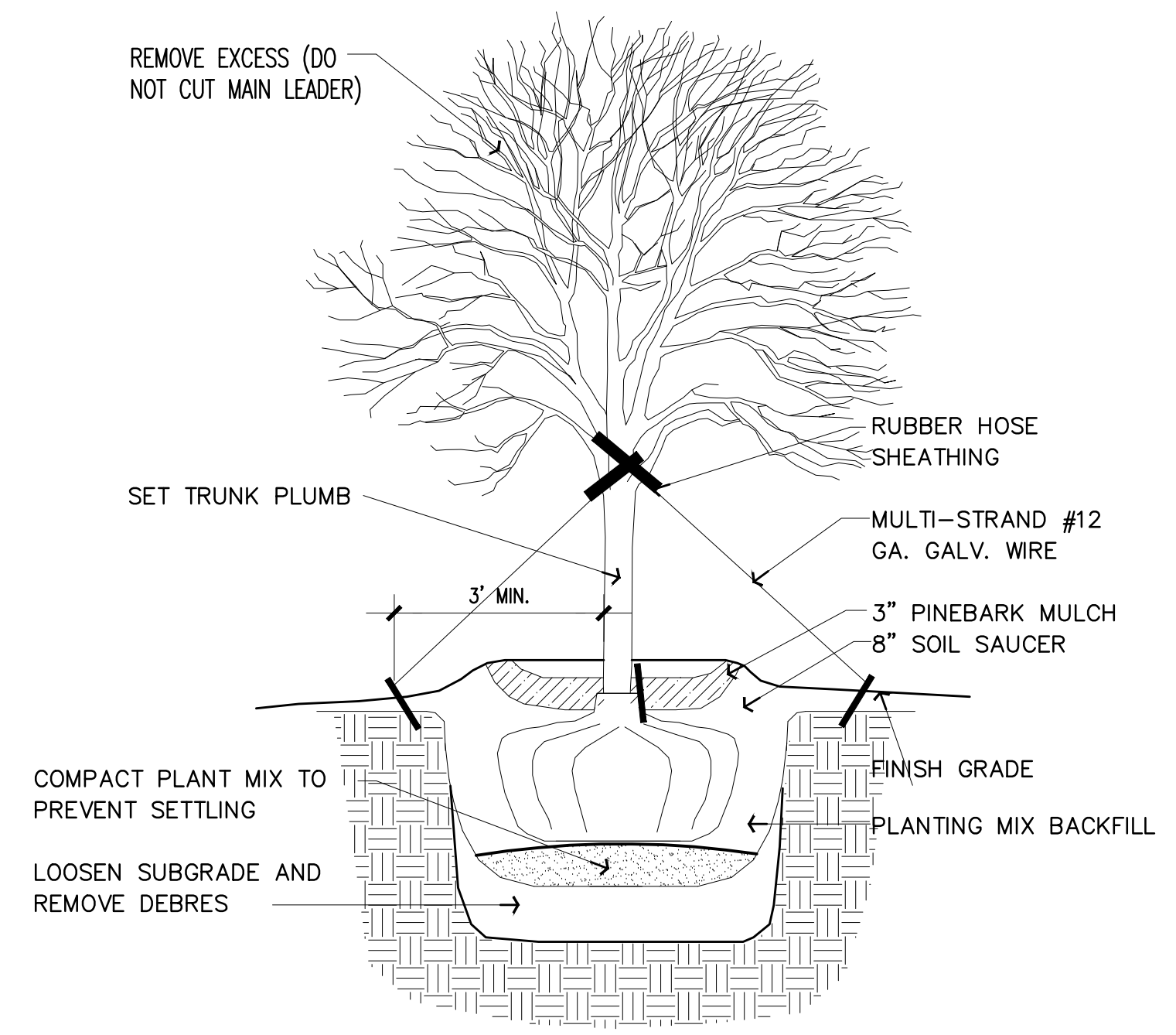
1 LANDSCAPE PLAN
A1.2 SCALE: 1"=30'-0"



SHRUB DETAIL



TREE DETAIL



TREE DETAIL

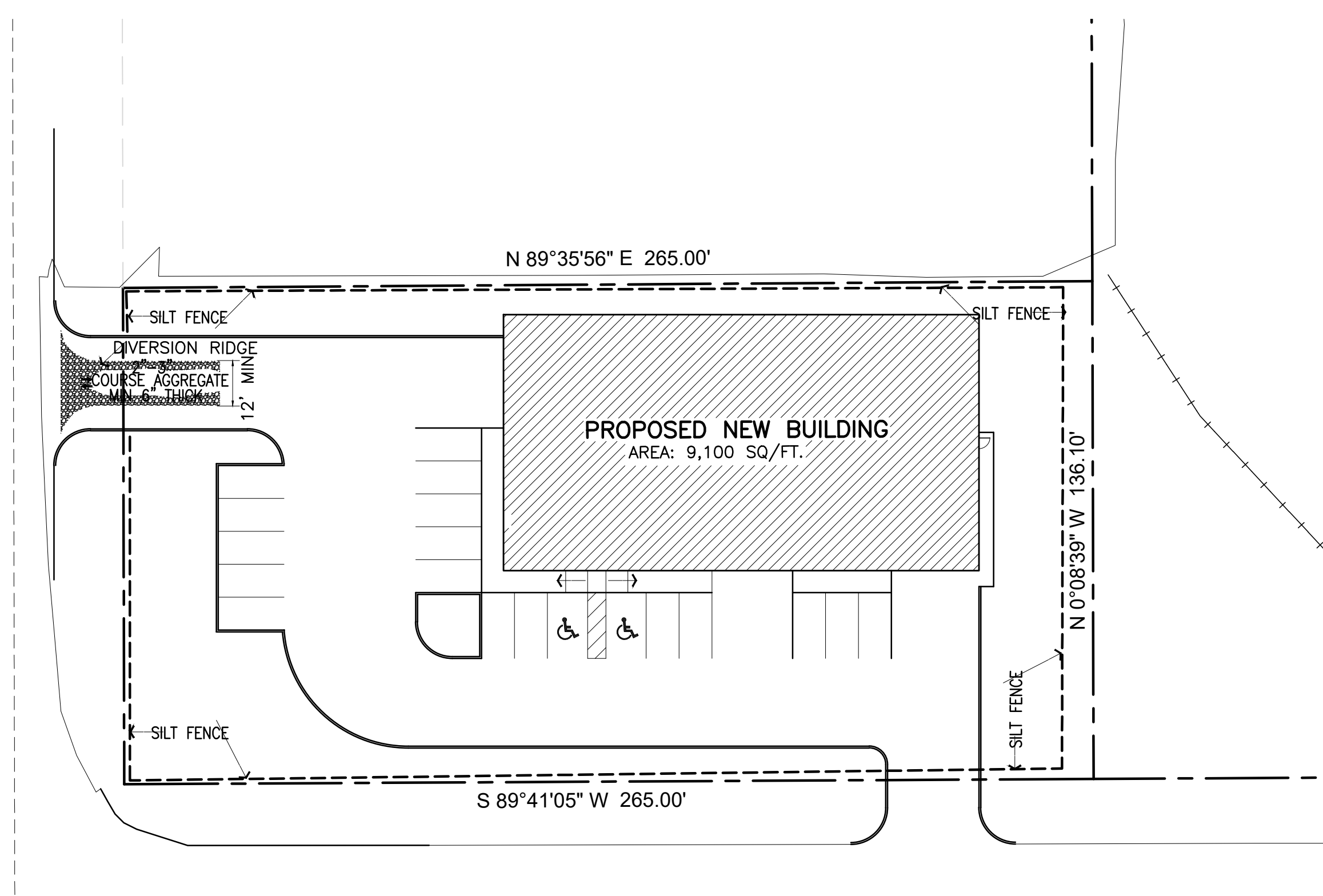


Revision:
•
•
•

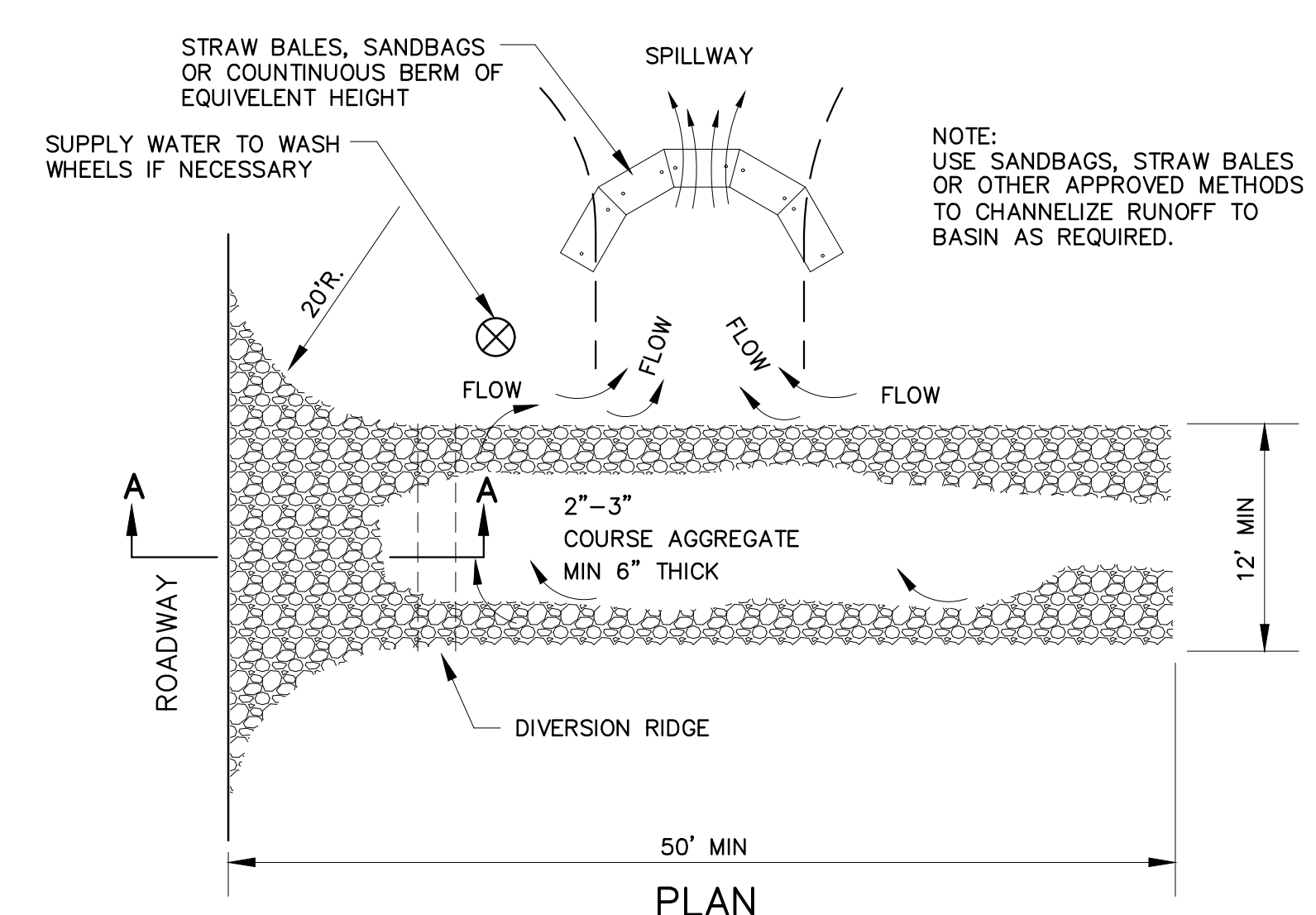
COPYRIGHT © 2022
ALL RIGHTS RESERVED

Project No:
• 23-0002
Date:
• 01-14-23
Sheet Scale:
• SEE PLAN
Drawn By:
•
Checked By:
•

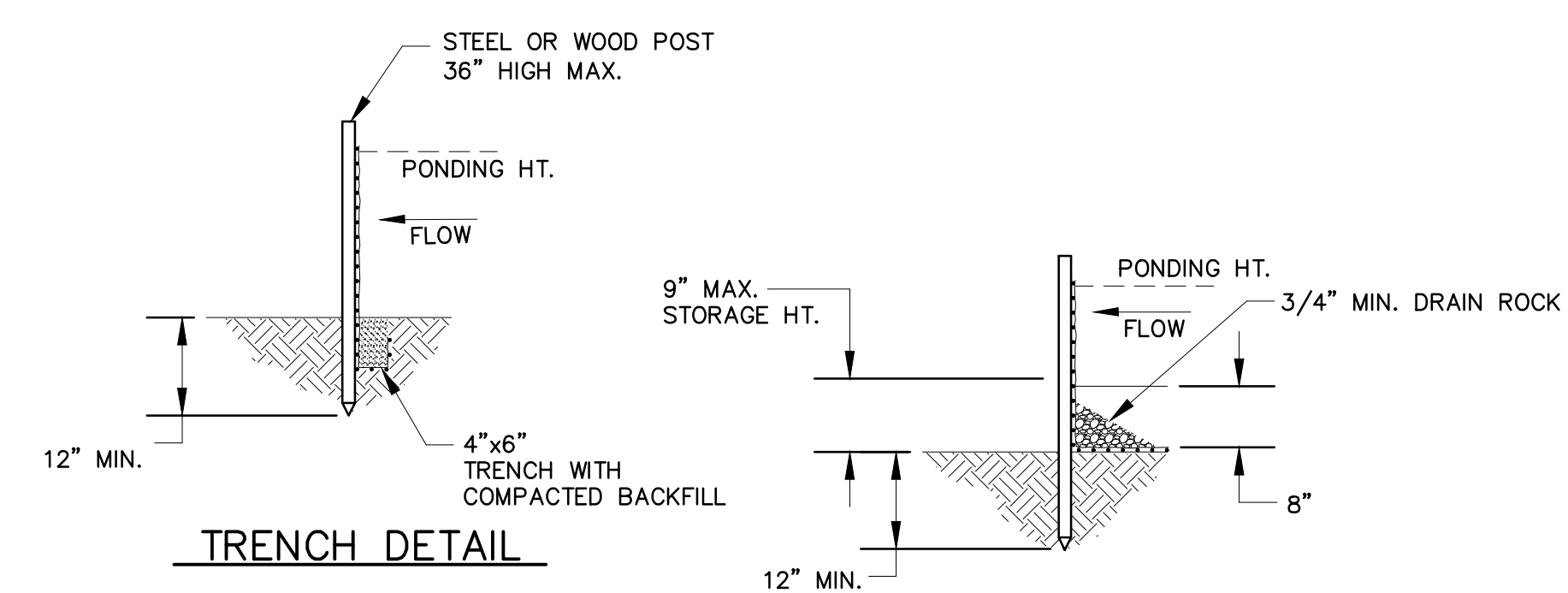
DRAWING NO.



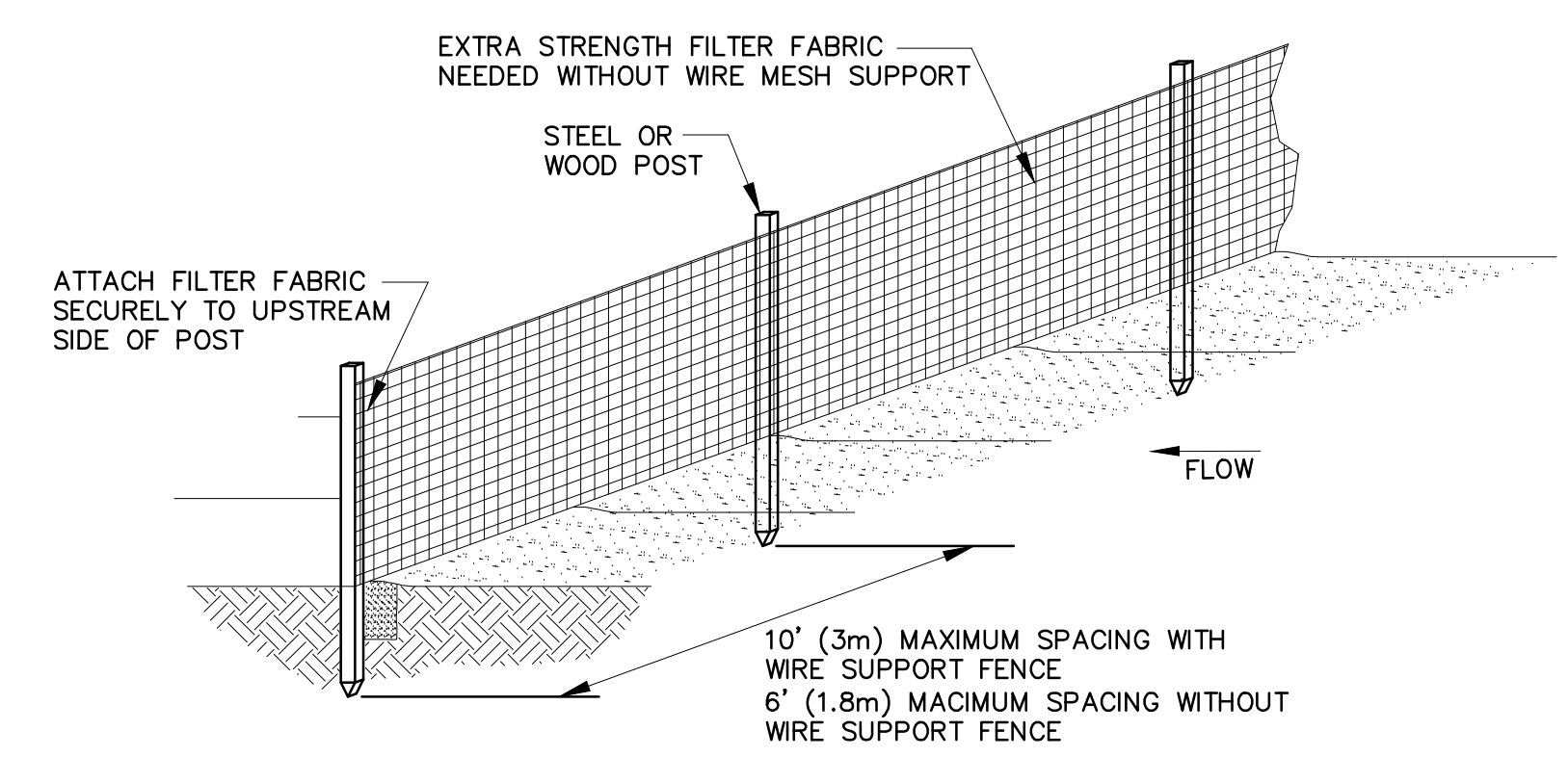
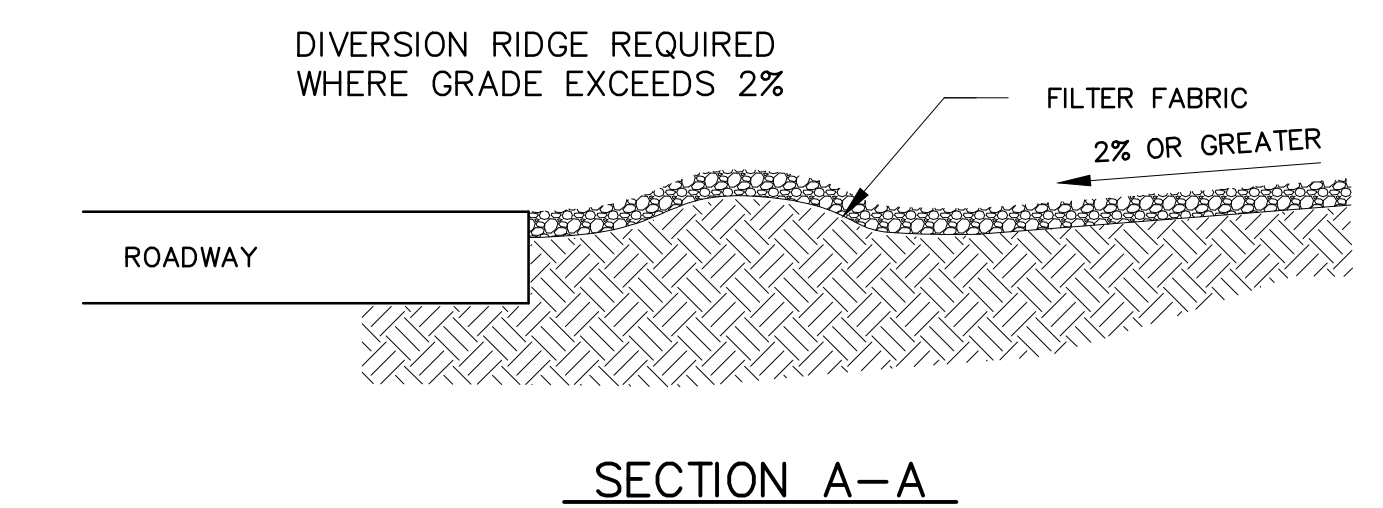
1 EROSION CONTROL PLAN
A1.3 SCALE: 1"=30'-0"

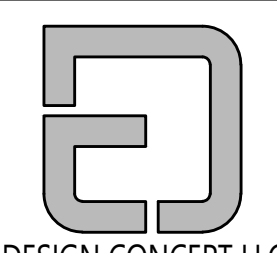


- NOTES:
1. THE ENTRANCE SHALL BE MAINTAINED IN A CONDITION THAT WILL PREVENT TRACKING OR FLOWING OF SEDIMENT ONTO PUBLIC RIGHT-OF-WAYS. THIS MAY REQUIRE TOP DRESSING, REPAIR AND/OR CLEANOUT OF ANY MEASURES USED TO TRAP SEDIMENT.
 2. WHEN NECESSARY, WHEELS SHALL BE CLEANED PRIOR TO ENTRANCE ONTO PUBLIC RIGHT-OF-WAY.
 3. WHEN WASHING IS REQUIRED, IT SHALL BE DONE ON AN AREA STABILIZED WITH CRUSHED STONE THAT DRAINS INTO AN APPROVED SEDIMENT TRAP OR SEDIMENT BASIN.



- NOTE
1. SILT FENCE SHALL BE PLACED ON SLOPE CONTOURS TO MAXIMIZE PONDING EFFICIENCY.
 2. INSPECT AND REPAIR FENCE AFTER EACH STORM EVENT AND REMOVE SEDIMENT WHEN NECESSARY. 9" (225mm) MAXIMUM RECOMMENDED STORAGE HEIGHT.
 3. REMOVED SEDIMENT SHALL BE DEPOSITED TO AN AREA THAT WILL NOT CONTRIBUTE SEDIMENT OFF-SITE AND CAN BE PERMANENTLY STABILIZED.





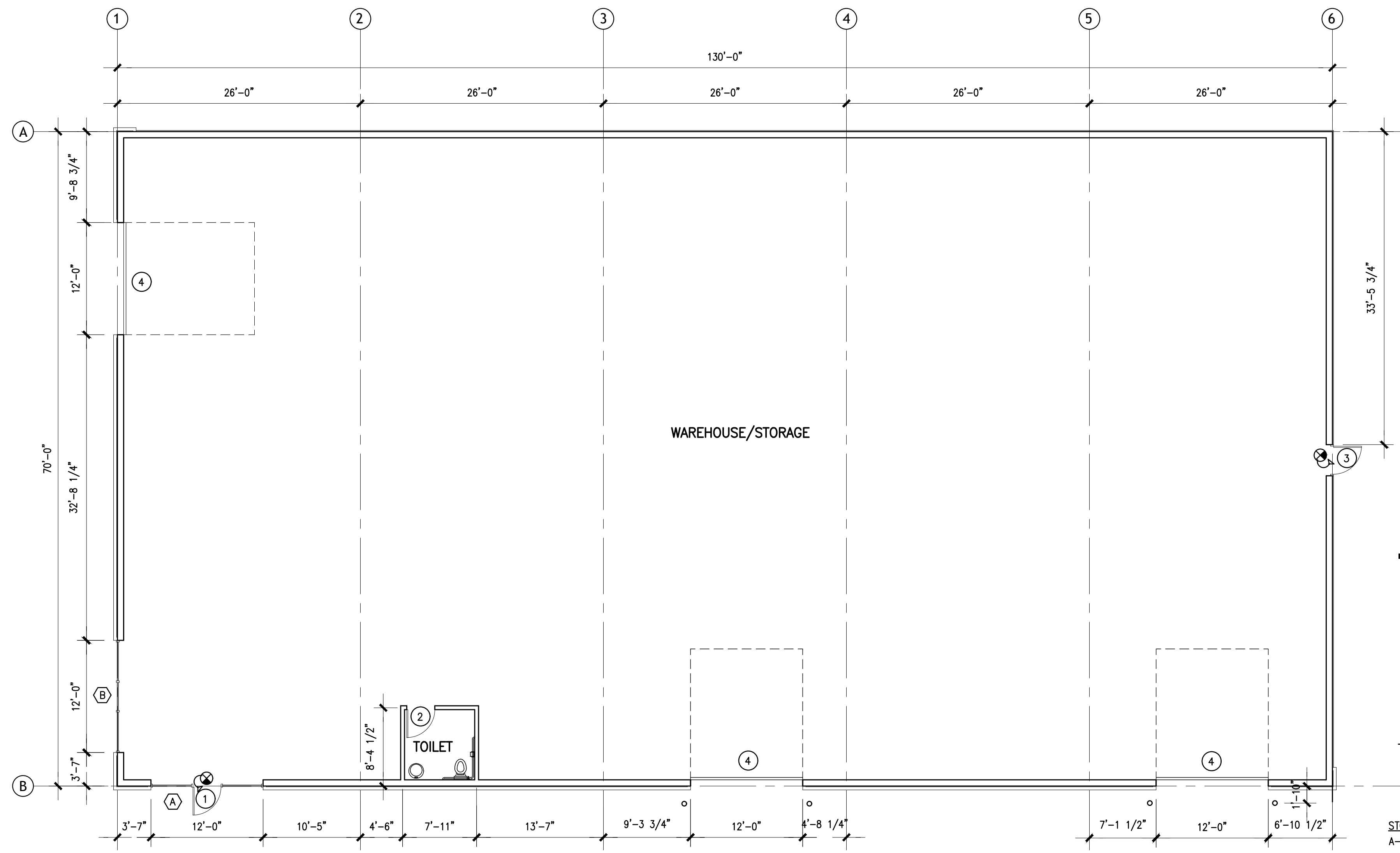
DESIGN CONCEPT LLC
TEL: 405/760-4855 • FAX: 405/602-0103
16164 N. WESTERN AVE, EDMOND, OK 73113

Revision:
•
•
•

COPYRIGHT © 2022
ALL RIGHTS RESERVED

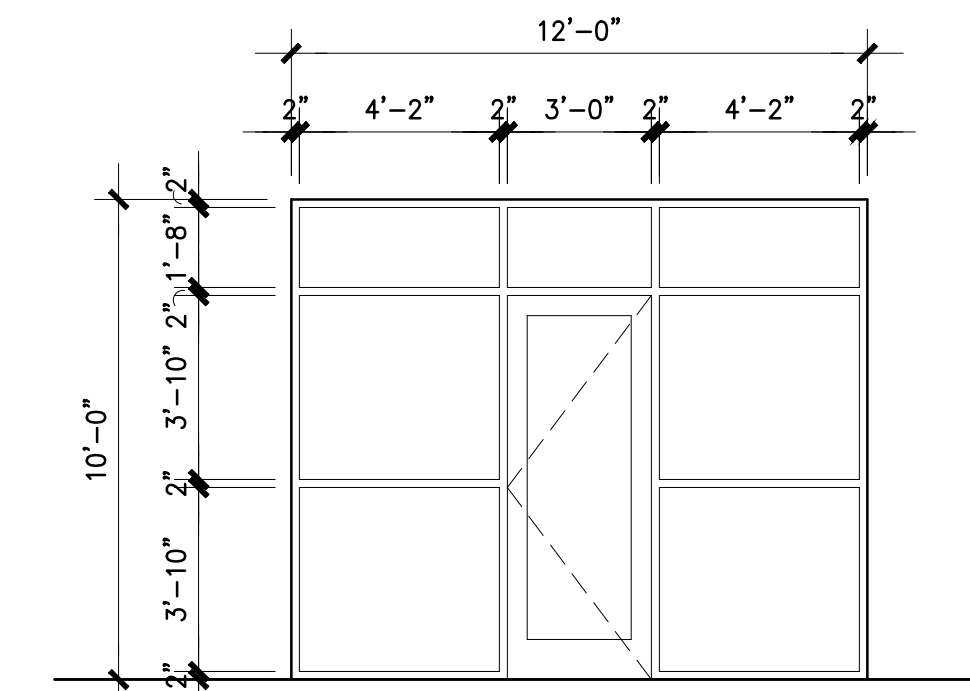
Project No:
• 23-0002
Date:
• 01-14-23
Sheet Scale:
• SEE PLAN
Drawn By:
•
Checked By:
•

DRAWING NO.

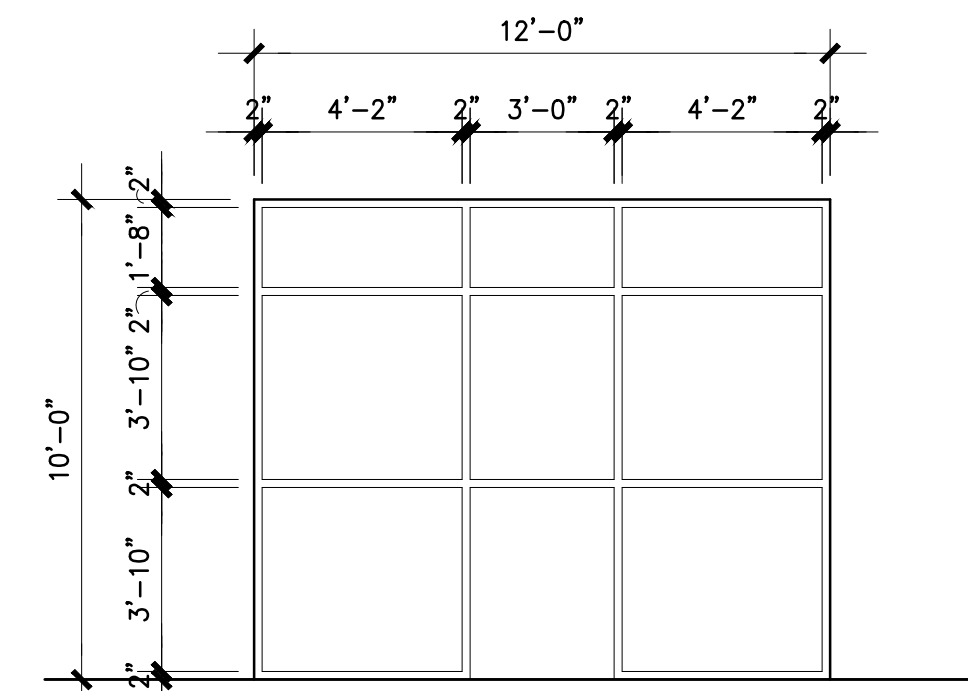


1 FLOOR PLAN
A2.1 SCALE: 1/8"=1'-0"

WINDOW TYPES

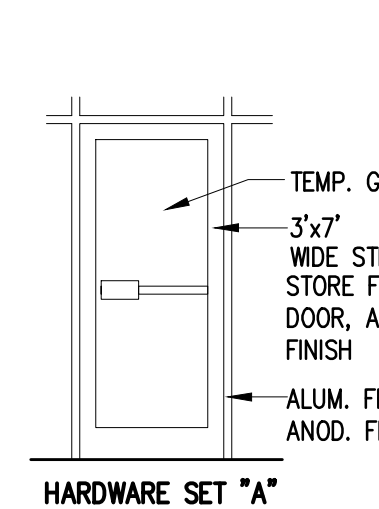


TYPE "A"
1/4" TEMPERED CLEAR GLASS
WITH ALUMINUM FRAME

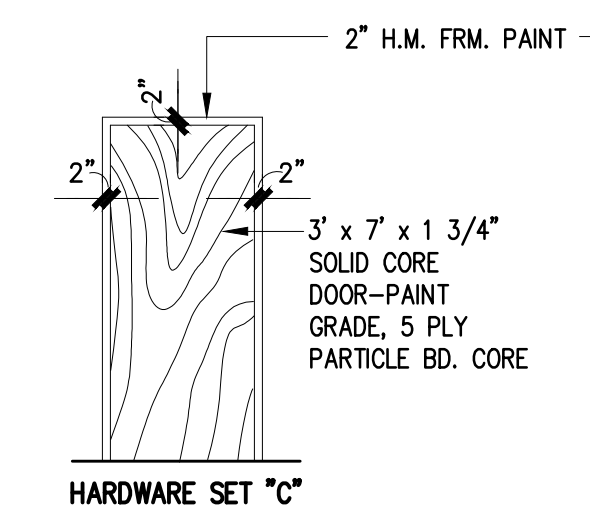


TYPE "B"
1/4" TEMPERED CLEAR GLASS
WITH ALUMINUM FRAME

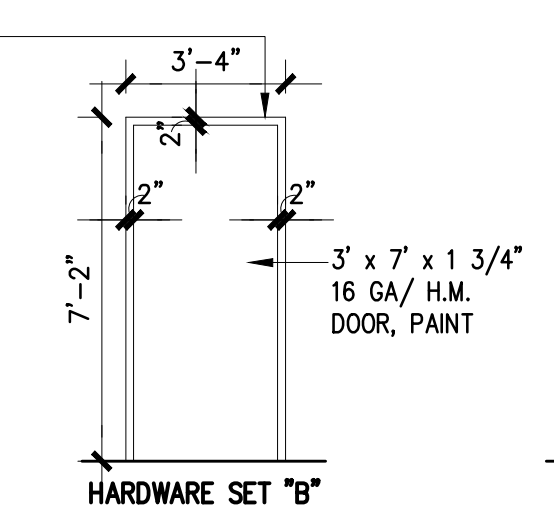
DOOR TYPES



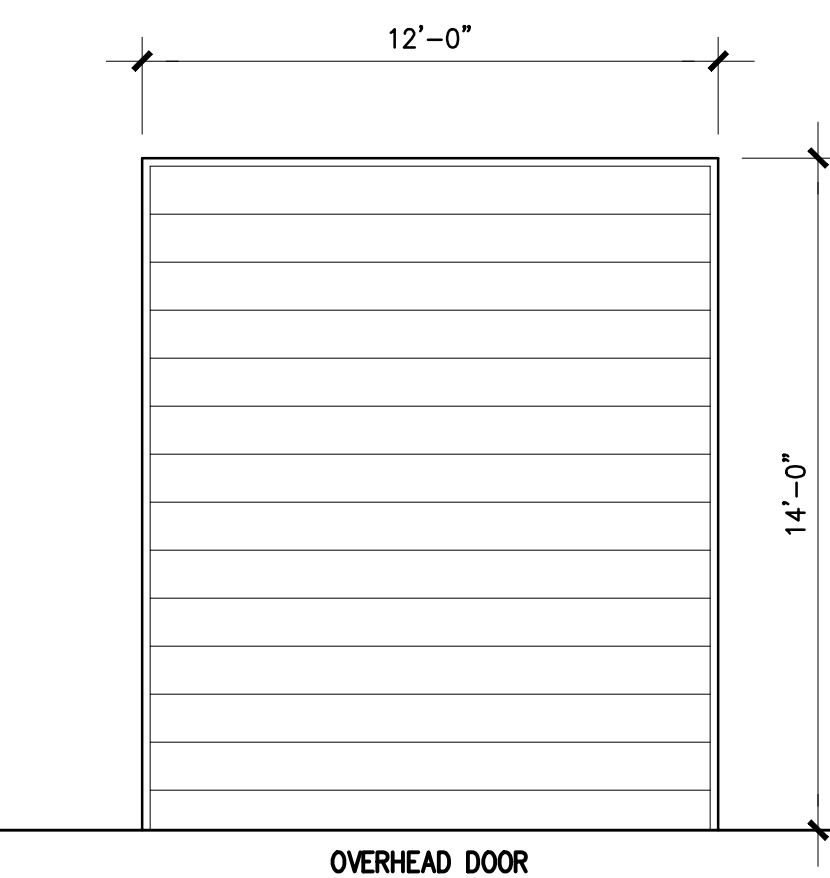
HARDWARE SET "A"



HARDWARE SET "C"



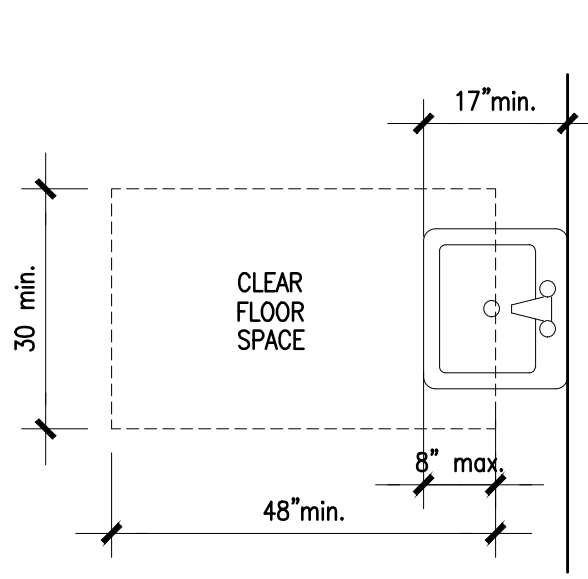
HARDWARE SET "B"



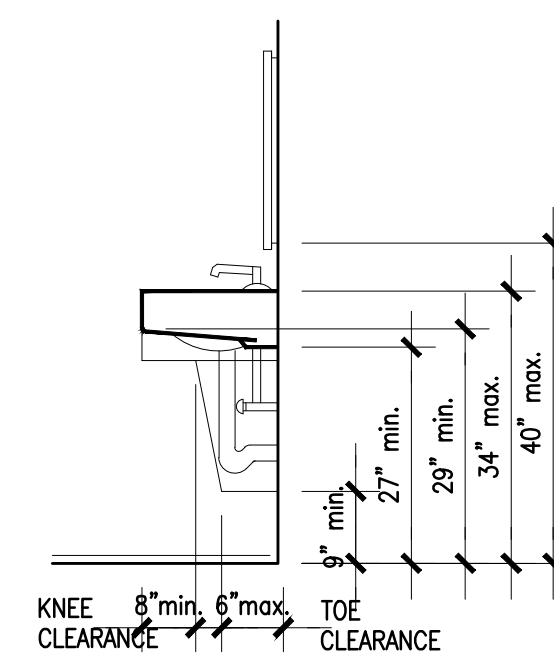
OVERHEAD DOOR

- STORE-FRONT
A - PIVOTS BY DOOR MFG.
-CLOSER (SURF. MT.)
-PUSH/PULLS BY DOOR MFG.
-CYLINDER/DEAD BOLT
-THRESHOLD (A.D.A.)
-WEATHERSTRIPING
-DOOR STOP
- RESTROOM AND OFFICE DOORS
C - PRIVACY SET-SCHLAGE "A" SRS.
VENTURA TRIM
-1 1/2" PR. BUTT HINGES
-SILENCERS
-DOOR STOP
- REAR-DOORS
B - LOCKSET-SCHLAGE "A" SERIES.
VENTURA TRIM
-CYLINDER DEADBOLT
-1 1/2" PR. BUTT HINGES 4" X 4"
SATIN CHROME
-CLOSER
-THRESHOLD
-WEATHERSTRIPING
-SILENCERS
-DOOR STOP

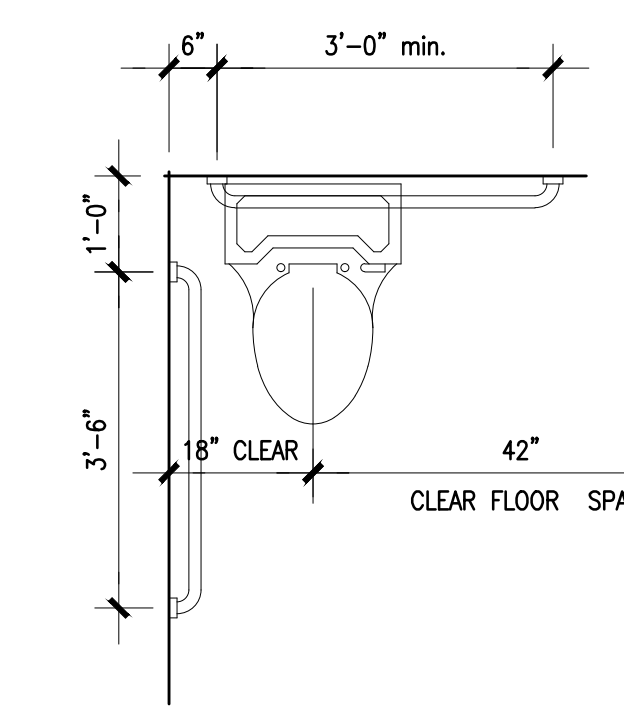
ACCESSIBILITY STANDARDS



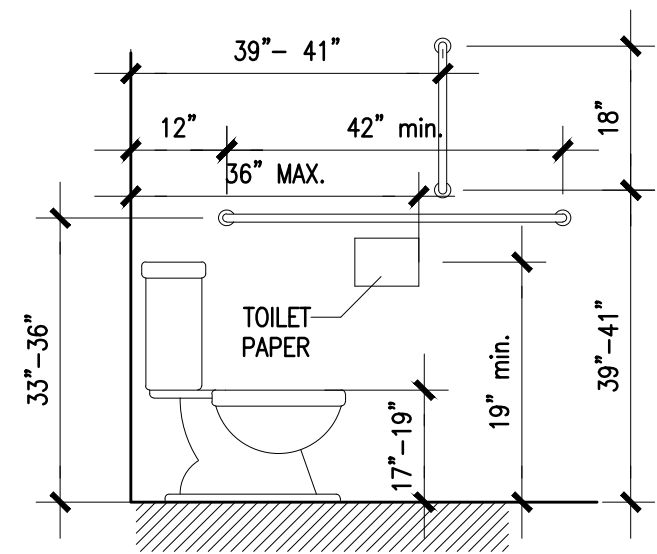
CLEAR FLOOR SPACE
AT LAVATORIES



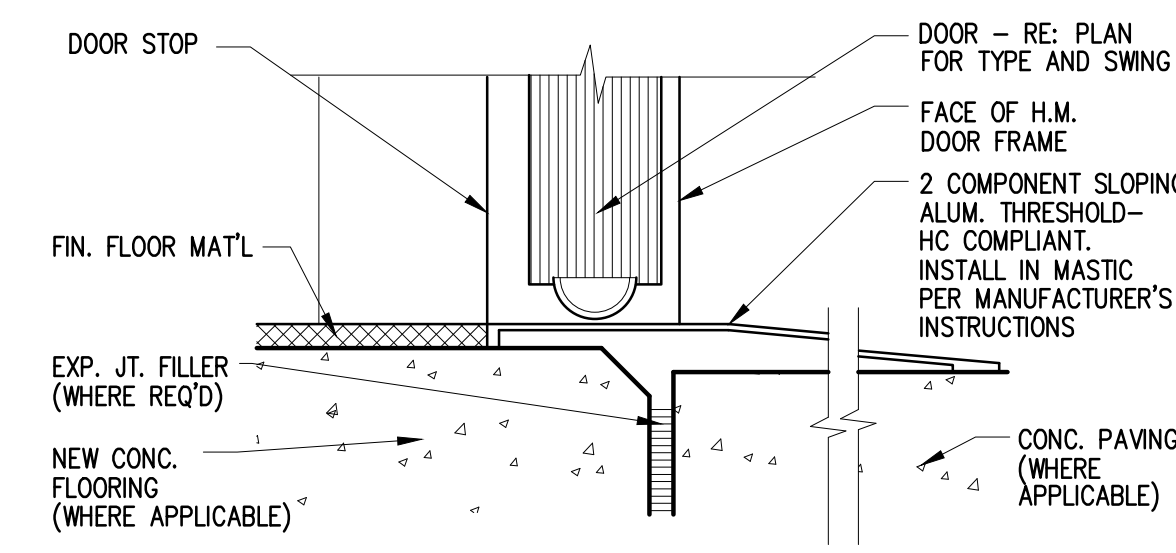
LAVATORY CLEARANCES



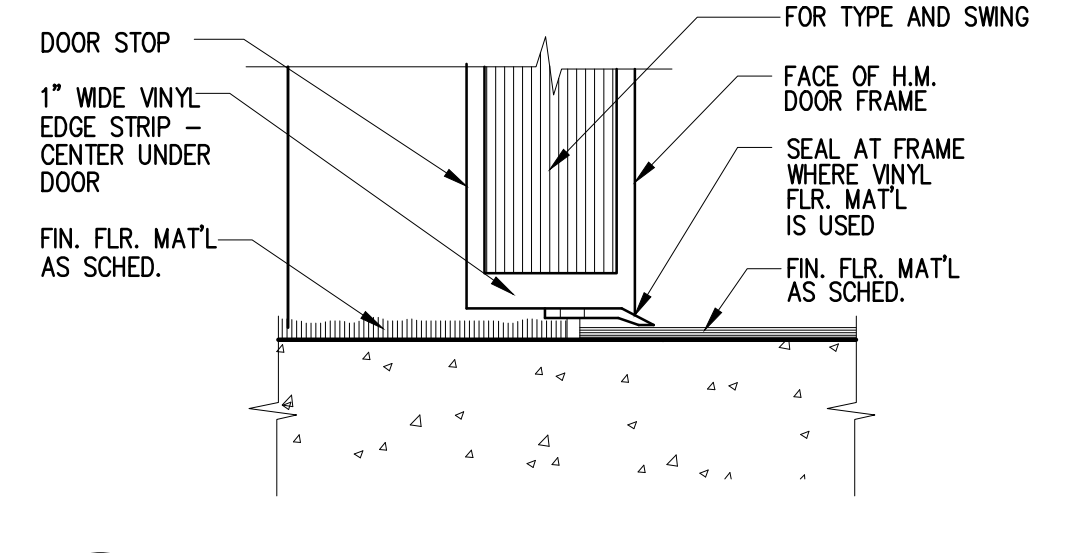
CLEAR FLOOR SPACE AT TOILETS



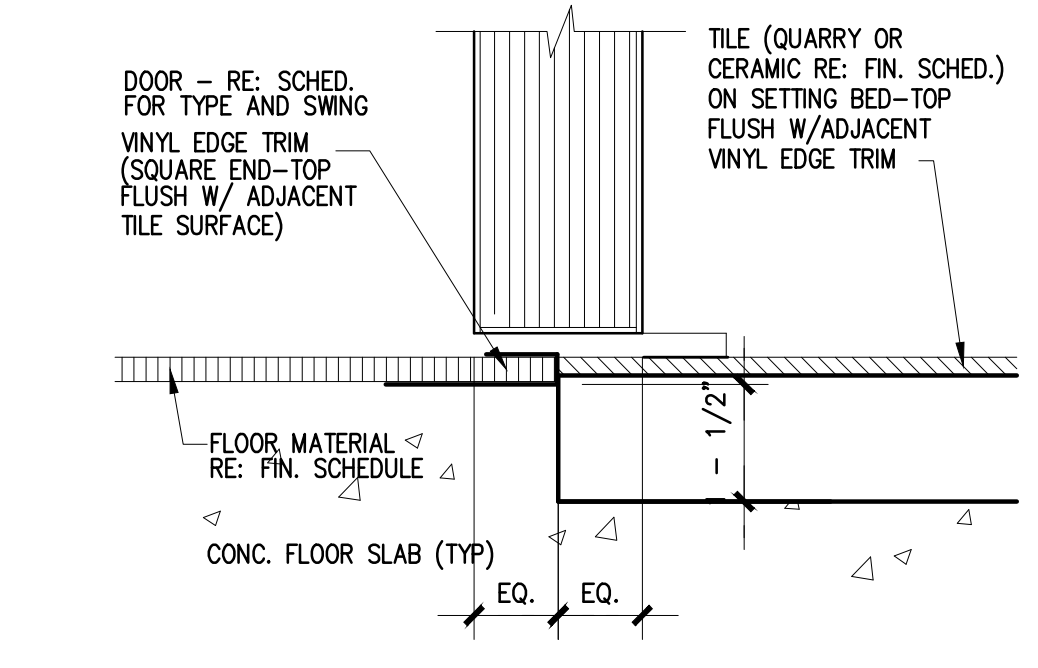
GRAB BARS AT WATER CLOSETS



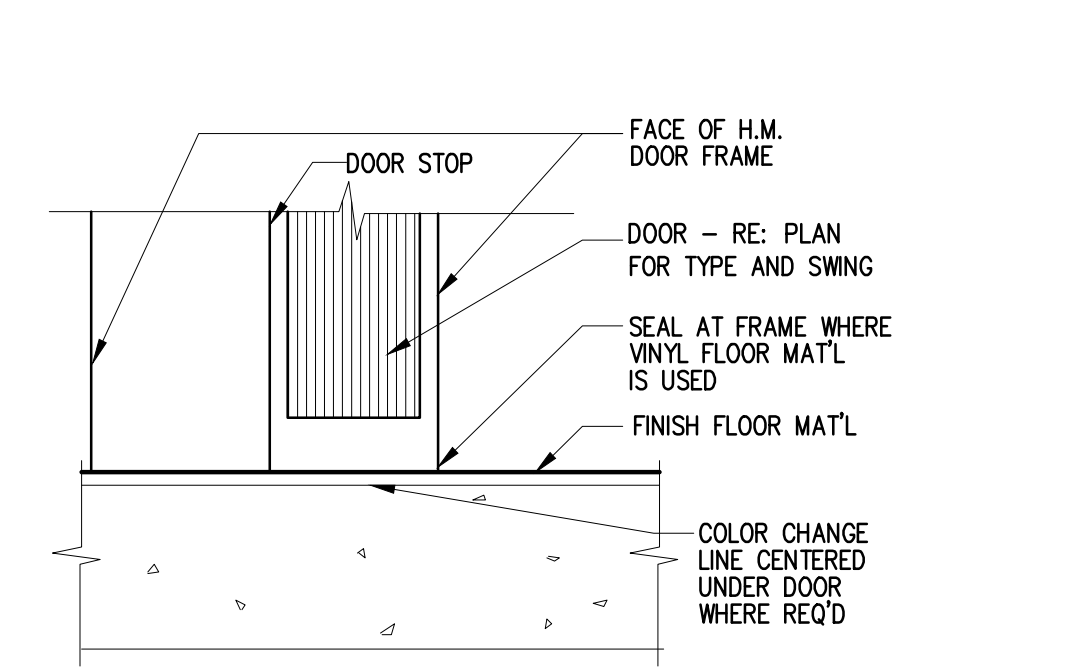
A EXTERIOR THRESHOLD DETAIL
NO SCALE



B FLOORING TRANSITION DETAIL
NO SCALE



C DOOR SILL AT CERAMIC TILE
NO SCALE

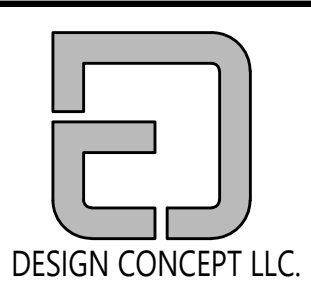


D DOOR SILL AT SAME MAT'L
NO SCALE

METAL BUILDING

2232 S. MISSOURI, OKLAHOMA CITY, OK

ELEVATIONS AND DETAIL



DESIGN CONCEPT LLC.
TEL: 405/760-4955 • FAX: 405/602-0103
1814 N. WESTON AVE., ENID, OK 73733

Revision:

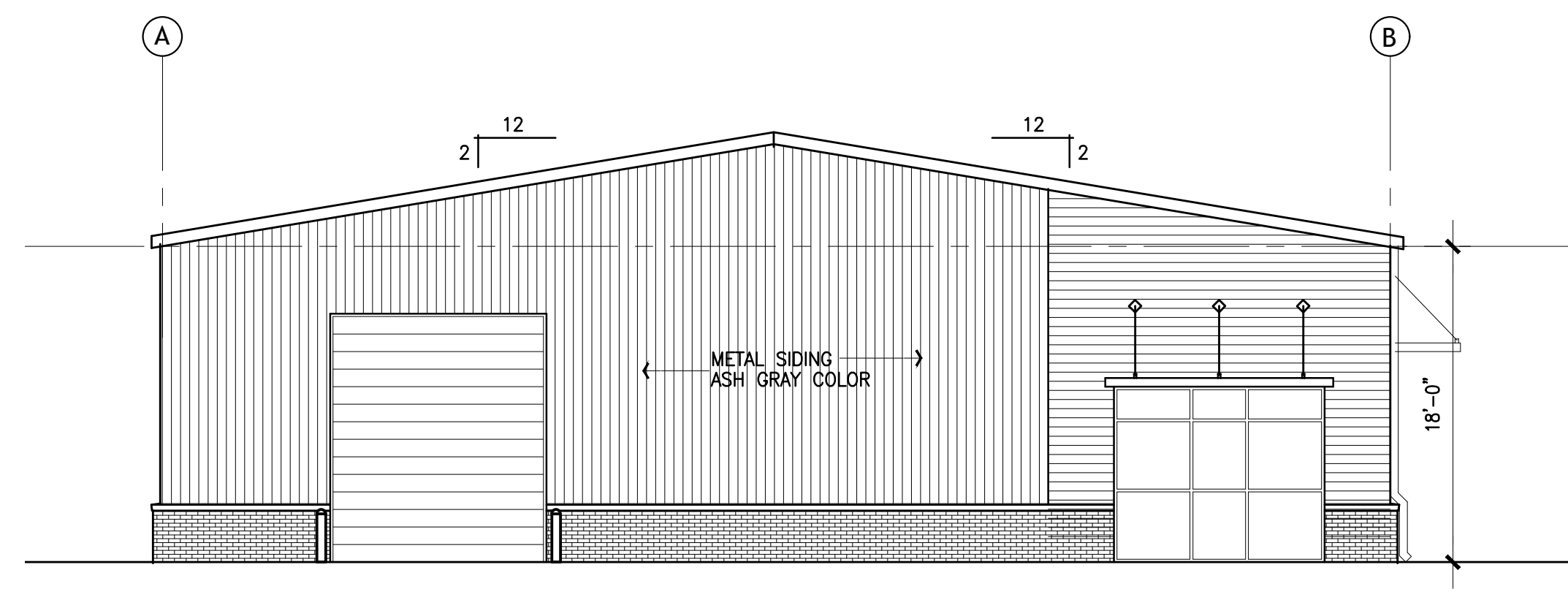
-
-
-

COPYRIGHT © 2022
ALL RIGHTS RESERVED

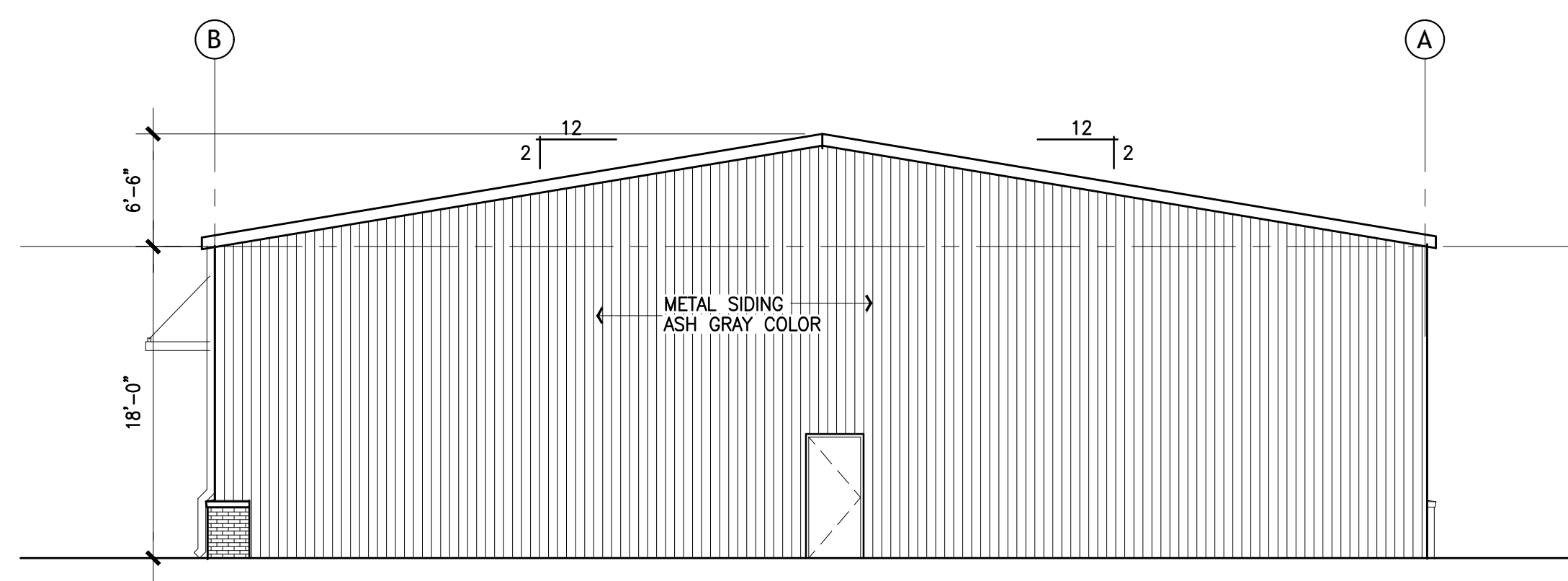
Project No:
• 23-0002
Date:
• 01-14-23
Sheet Scale:
• SEE PLAN
Drawn By:
•
Checked By:
•

DRAWING NO.

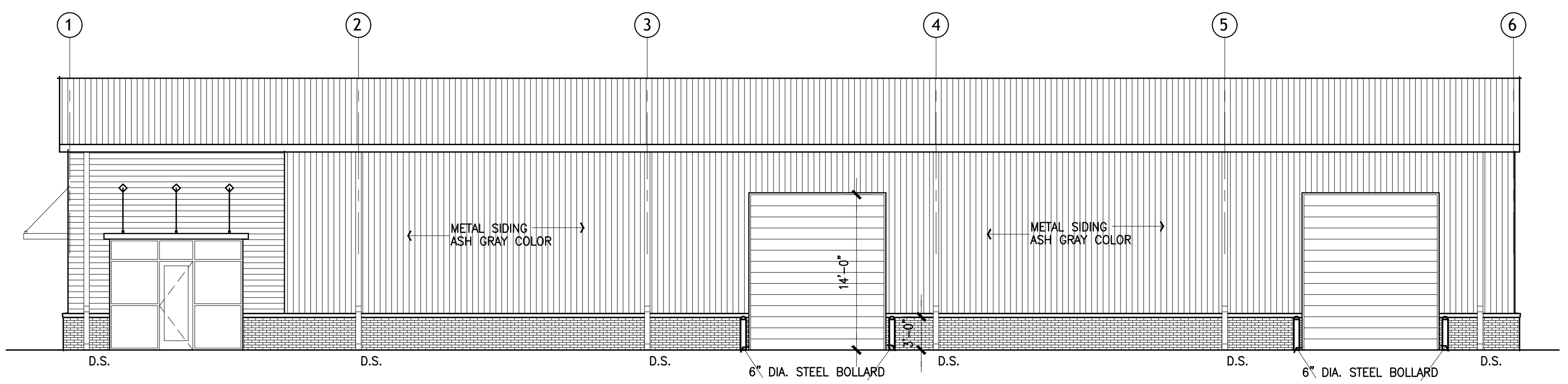
A3.1



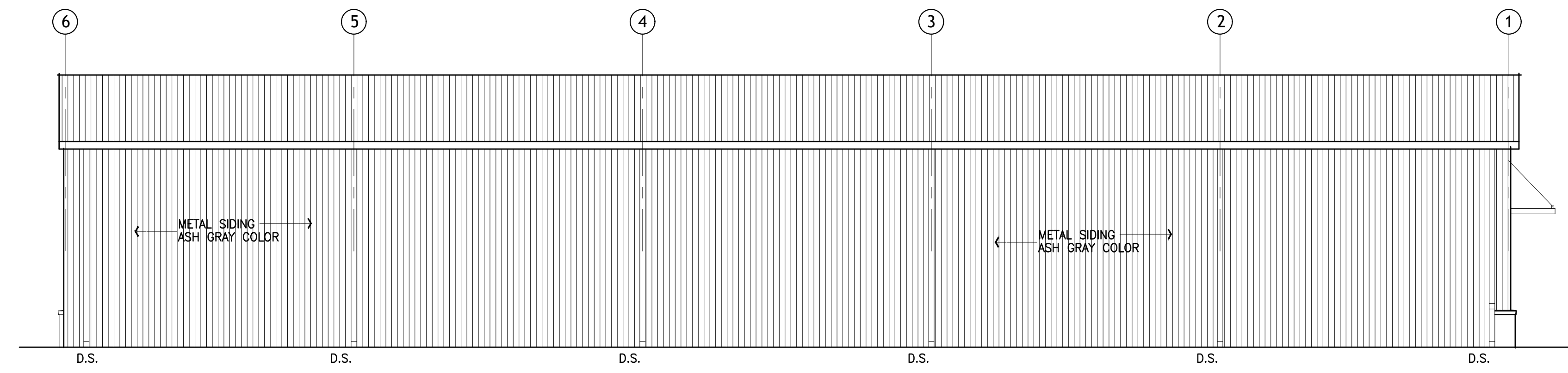
1 WEST ELEVATION
A3.1 SCALE: 1/8"=1'-0"



2 EAST ELEVATION
A3.1 SCALE: 1/8"=1'-0"



3 SOUTH ELEVATION
A3.1 SCALE: 1/8"=1'-0"



4 NORTH ELEVATION
A3.1 SCALE: 1/8"=1'-0"

