



Lease Rate:

Contact broker for pricing

Allen Wilkerson, SIOR, CCIM

Vice President
+1 803 401 4210
allen.wilkerson@colliers.com

Henry Roe

Vice President
+1 803 401 4283
henry.roe@colliers.com



Colliers | South Carolina
1301 Gervais Street, Ste 600
Columbia, SC 29201
+1 803 254 2300

FOR LEASE

Flexible Space Available with Convenient Access to I-26/I-20

720 Gracern Road | Columbia, SC

Highlights

- Available | ±2,181 SF - ±8,181 SF (contiguous)
- Professionally leased and managed
- Exterior tenant signage available
- Private entrances and convenient free parking
- Visible from I-126
- Concrete truck court for deliveries

Stephenson Center is a ±104,300-square-foot property consisting of three buildings. It is strategically located within the St. Andrews submarket, offering an ideal location less than five minutes away from Downtown Columbia, I-20 and I-26. This property is well-suited for businesses seeking a central location with convenient access to major interstates.

Copyright © 2025 Colliers International. Information herein has been obtained from sources deemed reliable, however its accuracy cannot be guaranteed. The user is required to conduct their own due diligence and verification.

FOR LEASE

720 Gracern Road

Downtown Columbia

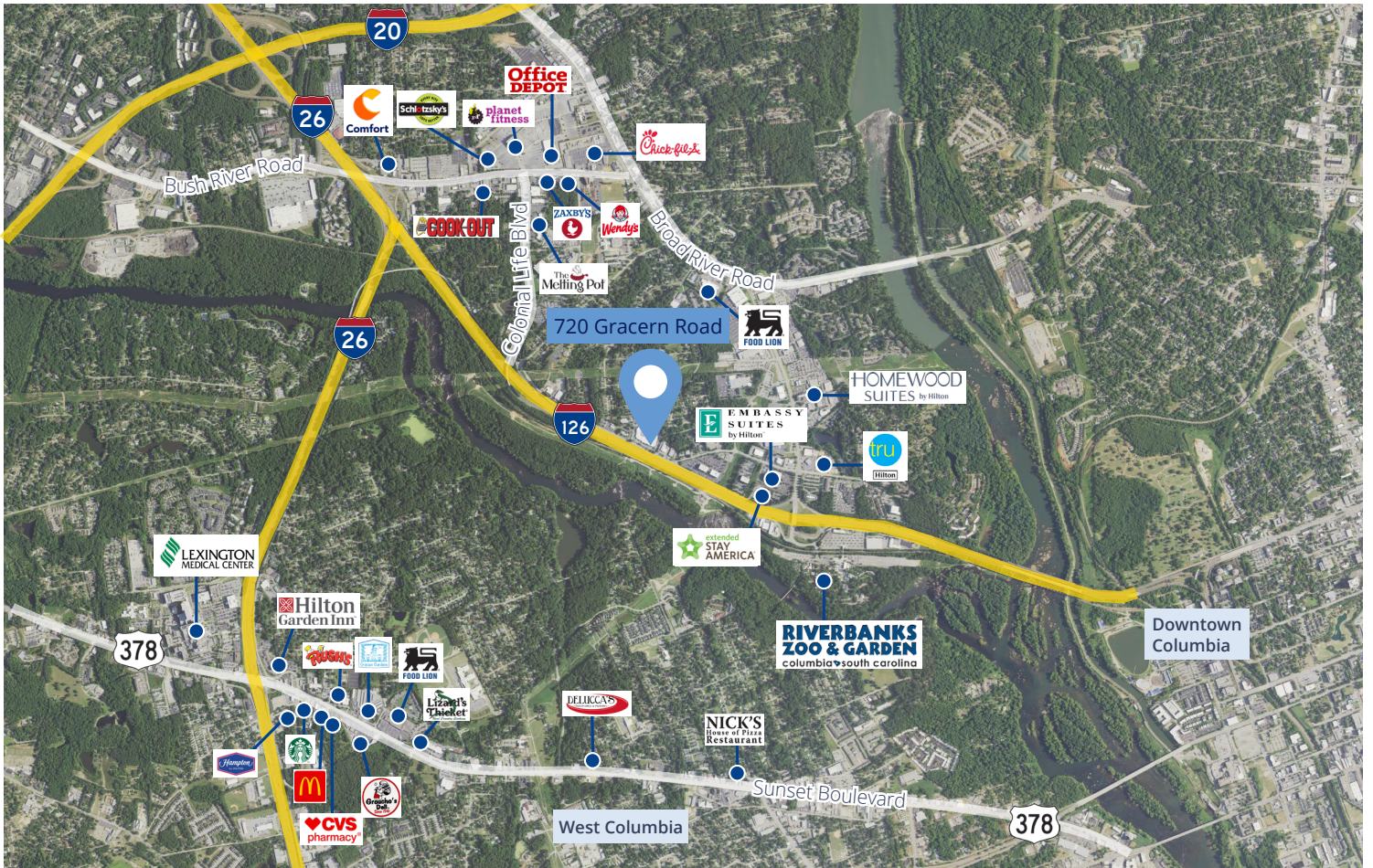


Stephenson Center
720 Gracern Road

Saluda River



Easy Access to Interstates & Local Amenities



CONTACT:

Allen Wilkerson, SIOR, CCIM

Vice President
+1 803 401 4210
allen.wilkerson@colliers.com

Henry Roe

Vice President
+1 803 401 4283
henry.roe@colliers.com

Colliers | South Carolina

1301 Gervais Street, Ste 600
Columbia, SC 29201
+1 803 254 2300

