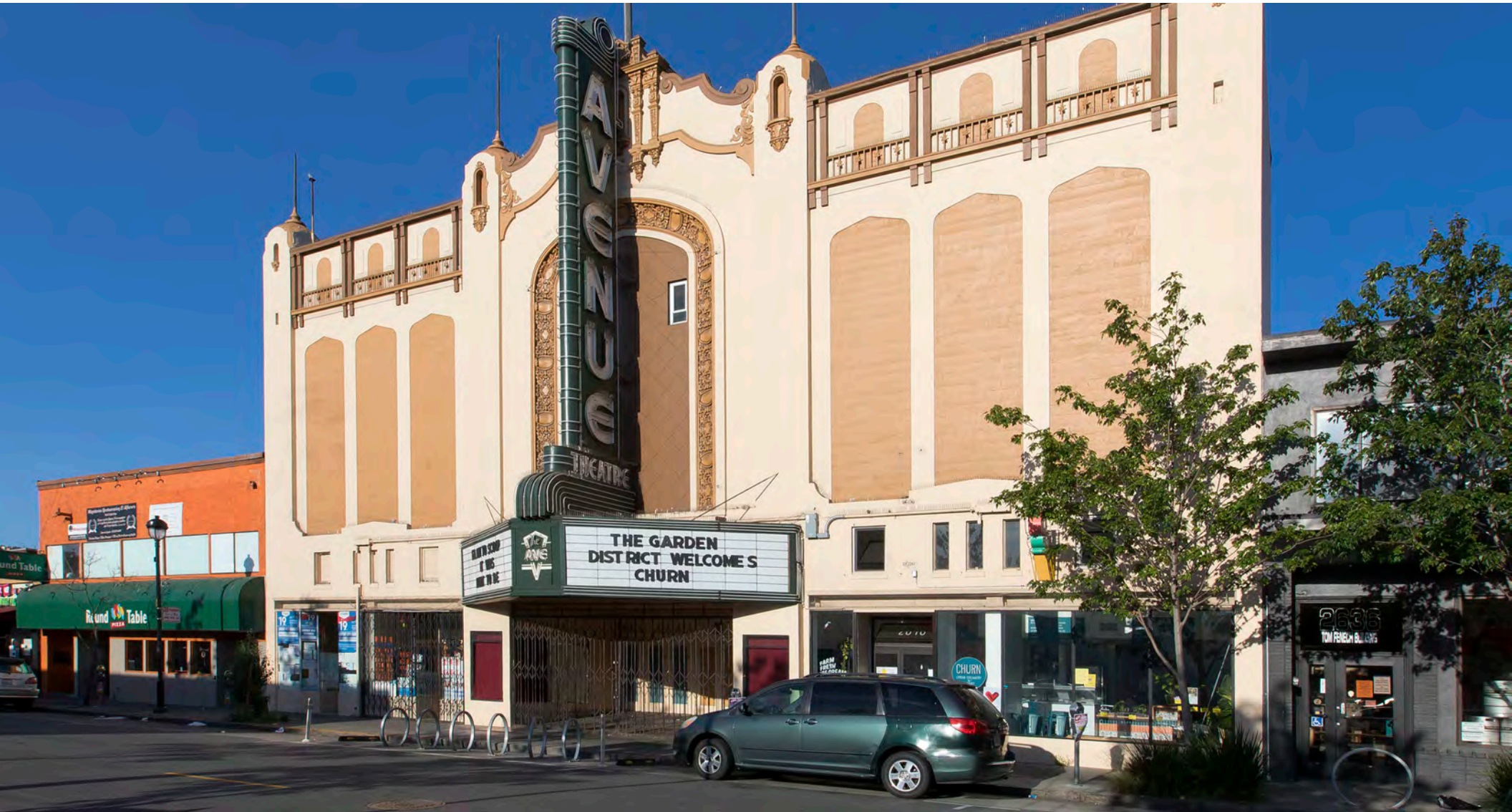


2650 SAN BRUNO AVENUE

FOR LEASE | HISTORIC THEATER BUILDING - PORTOLA DISTRICT



JARON ELIOPOULOS

415.608.6336 | jaron@tcp.com

CAMERON TU

510.919.8193 | cameron@tcp.com

2650 SAN BRUNO AVENUE

PROPERTY SUMMARY

The Avenue Theatre Building is a unique property filled with potential. A recent historic facade renovation helps to draw significant attention to the property. With very high ceilings and an open floor plan, many uses could be a great fit for the building.

ADDRESS

2650 San Bruno Avenue, San Francisco, CA 94124

AVAILABLE SPACE

+/- 11,510 Square Feet

*Additional retail and limited food service spaces available if desired

RENTAL RATE

Call Agent For Pricing

ZONING

NCD - San Bruno Avenue Neighborhood Commercial District

AVAILABLE

Immediately

BUILDING ATTRIBUTES

- + Historic Facade Renovation
- + Significant Signage Potential
- + Very High Ceilings
- + Open Floor Plan
- + Many Uses Considered



2650 SAN BRUNO AVENUE

LOCATION OVERVIEW

Desirable Portola District location, walkable to nearby amenities, public transportation and to surrounding neighborhoods.



02 MIN to Bacon St Muni
06 MIN to Silver Ave Muni



10 MIN to Dogpatch District
16 MIN to Potrero Hill
20 MIN to Mission District



02 MIN to 101 On-Ramp
05 MIN to 280 On-Ramp



2650 SAN BRUNO AVENUE

NEARBY AMENITIES

- 1..... Pupusería Ilobasco
- 2..... Round Table Pizza
- 3..... Bank of the West
- 4..... La Loma Produce
- 5..... United States Postal Service
- 6..... Ramen House
- 7..... Imperial Garden Seafood
- 8..... Subway
- 9..... Hawaiian Drive Inn
- 10..... Four Barrel Coffee Portola
- 11..... Sterling Bank & Trust
- 12..... Wing Hing Restaurant
- 13..... Dim Sum Kitchen
- 14..... Five Degree Tea House
- 15..... O'Reilly Auto Parts
- 16..... Breakfast At Tiffany's
- 17..... Walgreens
- 18..... San Bruno Supermarket
- 19..... Bank of America
- 20..... Jim Georgie's Donuts
- 21..... Golden State Pizza & Grill
- 22..... Shell Gas Station
- 23..... Palega Recreation Center



2650 SAN BRUNO AVENUE



BREAKFAST AT TIFFANY'S



IMPERIAL GARDEN SEAFOOD RESTAURANT



RAMEN HOUSE



FOUR BARREL COFFEE



PALEGA RECREATION CENTER

2650 SAN BRUNO
AVENUE



TCP
TOUCHSTONE
COMMERCIAL PARTNERS

Corp. Lic. 01112906
www.tcp.com

JARON ELIOPOULOS DRE # 01975155
415.608.6336 | jaron@tcp.com

CAMERON TU DRE # 02100436
510.919.8193 | cameron@tcp.com

The information presented has been secured from sources we believe to be reliable but we make no representations or warranties, expressed or implied, as to the accuracy of the information. Lessee must verify the information and bears all risk for any inaccuracies.