



For Lease

1440 N Chase St.
Athens, GA

TOA 
COMMERCIAL BROKERS

1440 N Chase St, Athens GA

Available Space: 12,286 sq ft

Rent: \$22.00 NNN

Property Overview:

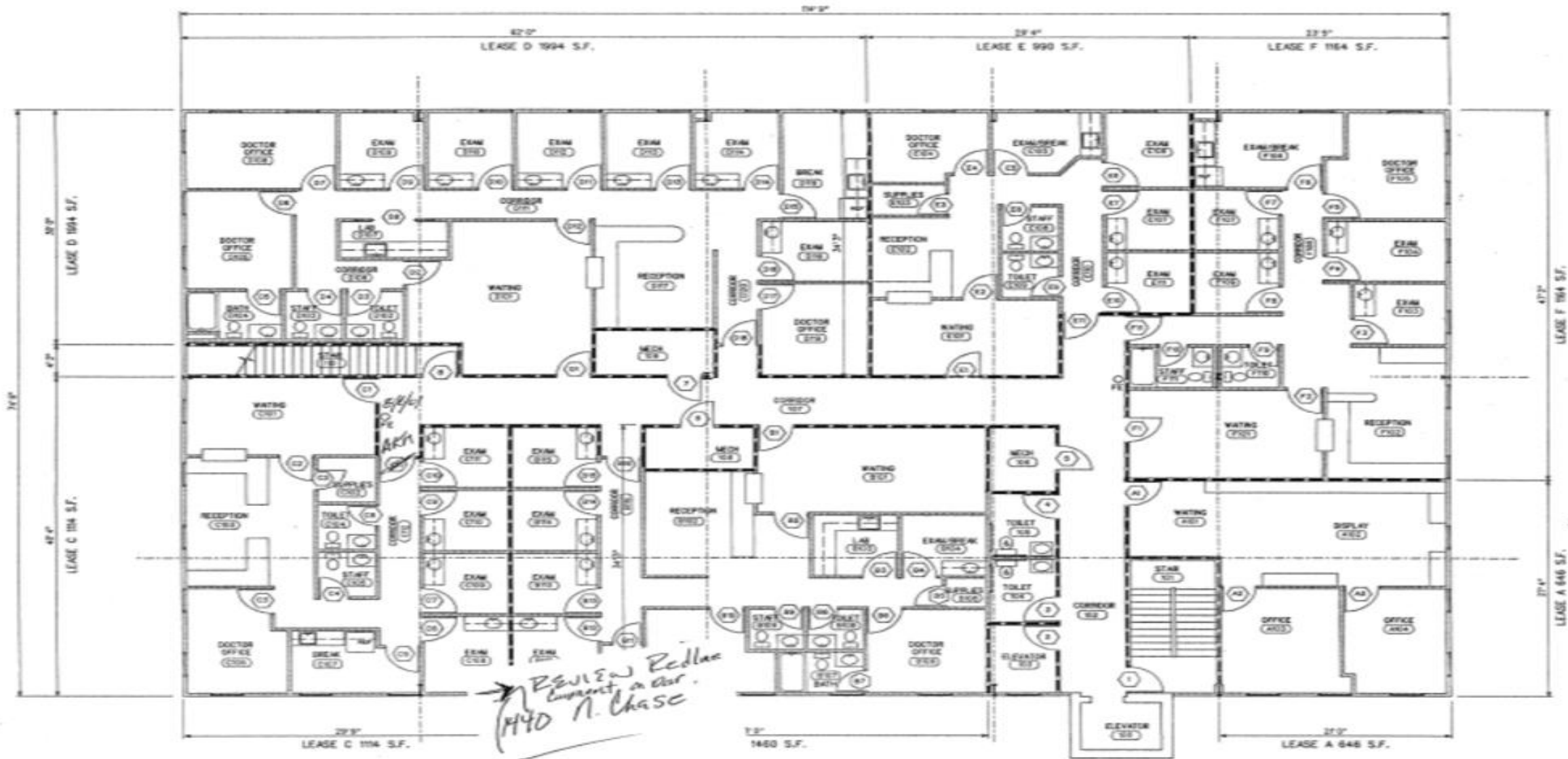
- Type: Medical Office
- Total RBA: 14,729 SF
- Stories: 2
- Year Built: 1999
- Parking: 20 Spaces
- Parking Ratio: 1.36/1,000 SF
- Lot Size: 1.94 AC

Area Highlights:

- Athens has a growing healthcare sector with multiple prominent medical facilities, including Piedmont Athens Regional Medical Center.
- Home to the University of Georgia, Athens has a steady population growth and a strong economic environment, which contributes to rising demand and a reliable client base for a broad range of medical services.
- Athens is well-connected by major highways, including US-78 and GA-316, making it easily-accessible for patients from many surrounding areas, including Augusta and Atlanta.



2nd Floor Plan



SECOND

SCALE: 1/8" = 1'

FLOOR PLAN

TOA Commercial Brokers

REID MOORE

D: 404.661.2137

E: Reid@toacommercial.com

RACHEL HAYES

D: 404.594.3028

E: Rachel@toacommercial.com



TOA 
COMMERCIAL BROKERS
