

FOR SUBLEASE
422 Market Street
San Diego, California 92101



RETAIL Space in Gaslamp **For Sublease**

PETER WRIGHT
619.243.8450
pwright@qfcre.com
BRE #01846272

The information contained here has been obtained from sources considered to be reliable, but no guarantee of its accuracy is made by this company. In addition, no representation is made respecting zoning, condition of title, dimensions or any matters of a legal or environmental nature. Such matters should be referred to legal counsel for determination. Terms and conditions are subject to change without prior notice. Subject to errors and omissions.



SPACE AVAILABLE

15,352 SF of first floor and basement space

Sublease Expires: 9/18/27

SUBLEASE RATES

\$3.60 PSF + NNN

FEATURES

- Completely renovated building in 2020
- Currently used as a museum / entertainment venue
- Existing bar in place
- Corner unit, great street visibility



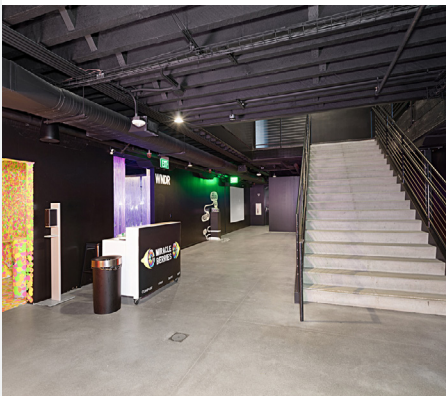
PETER WRIGHT

619.243.8450

pwright@qfcre.com

BRE #01846272

The information contained here has been obtained from sources considered to be reliable, but no guarantee of its accuracy is made by this company. In addition, no representation is made respecting zoning, condition of title, dimensions or any matters of a legal or environmental nature. Such matters should be referred to legal counsel for determination. Terms and conditions are subject to change without prior notice. Subject to errors and omissions.



PETER WRIGHT

619.243.8450

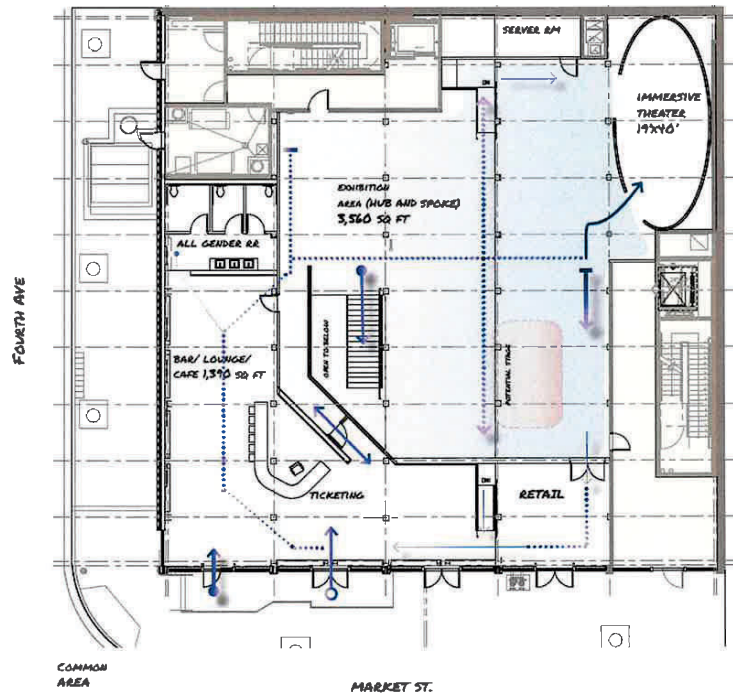
pwright@qfcre.com

BRE #01846272

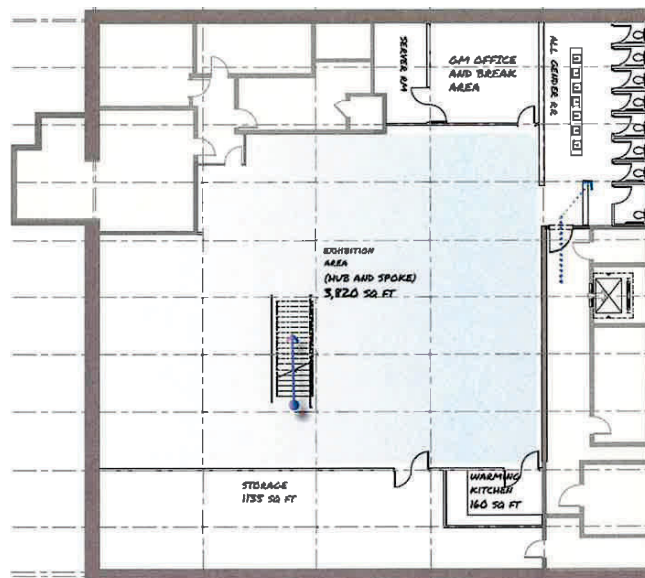
The information contained here has been obtained from sources considered to be reliable, but no guarantee of its accuracy is made by this company. In addition, no representation is made respecting zoning, condition of title, dimensions or any matters of a legal or environmental nature. Such matters should be referred to legal counsel for determination. Terms and conditions are subject to change without prior notice. Subject to errors and omissions.

SITE PLAN

FIRST FLOOR



BASEMENT



PETER WRIGHT

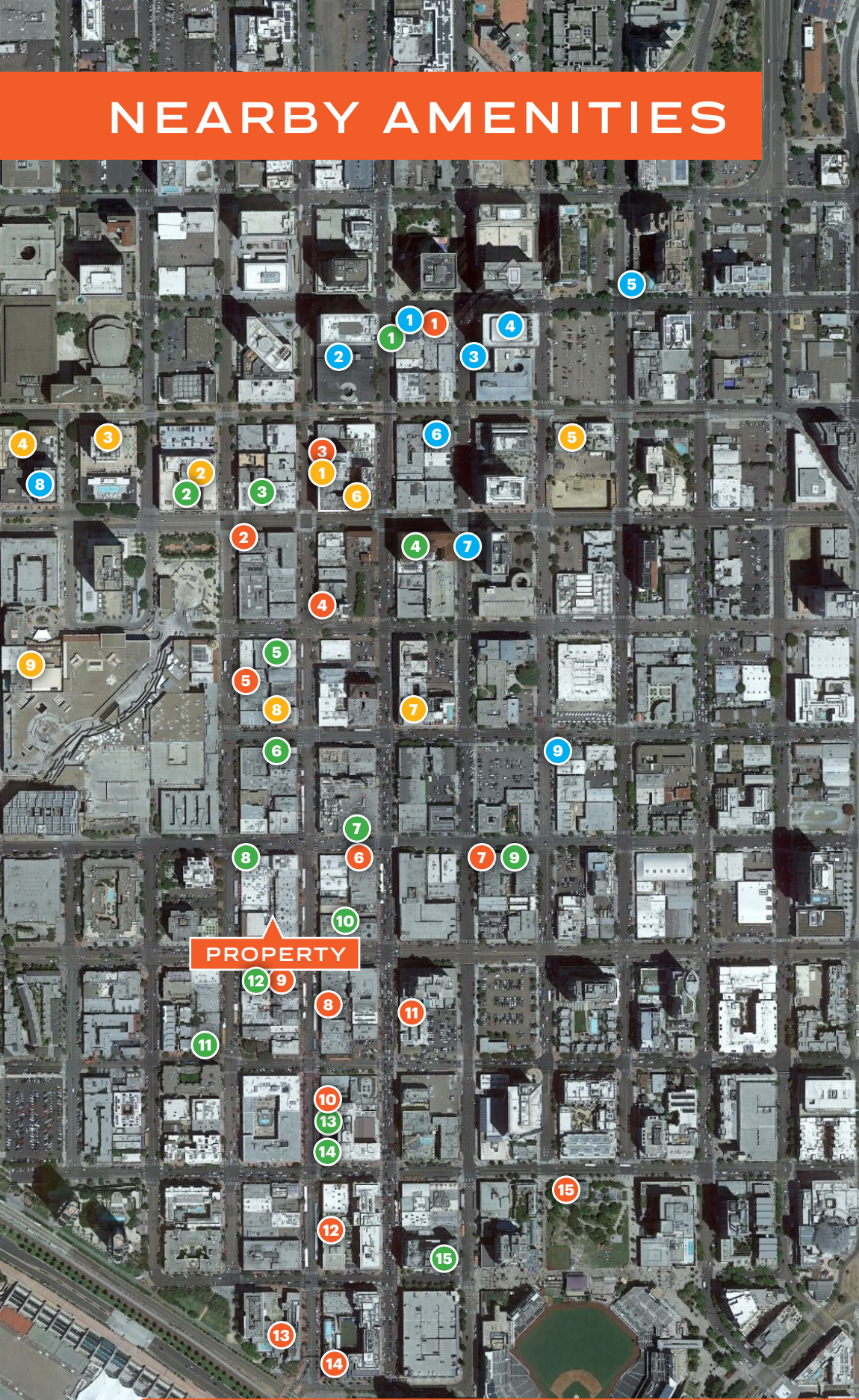
619.243.8450

pwright@qfcre.com

BRE #01846272

The information contained here has been obtained from sources considered to be reliable, but no guarantee of its accuracy is made by this company. In addition, no representation is made respecting zoning, condition of title, dimensions or any matters of a legal or environmental nature. Such matters should be referred to legal counsel for determination. Terms and conditions are subject to change without prior notice. Subject to errors and omissions.

NEARBY AMENITIES



RESTAURANTS

1. Donut Bar
2. Gaslamp Fish House
3. Curadero
4. Melting Pot
5. Bandar Restaurant
6. Fogo de Chao
7. Breakfast Republic
8. Rustic Root
9. El Chingon
10. Lionfish
11. The Nolen
12. Cafe Sevilla
13. Lou & Mickey's
14. Nobu
15. Social Tap

HOTELS

1. Kimpton Hotel
2. The US Grant
3. The Westgate Hotel
4. The Bristol Hotel
5. Hotel Churchill
6. Courtyard Marriott
7. Andaz San Diego
8. The Keating Hotel
9. The Westin

BARS & BREWPUBS

1. Stout Public House
2. Rendezvous
3. Phantom Lounge
4. Parq
5. Gaslamp Tavern
6. Atomic
7. 5th & Sky
8. Tin Roof
9. Noble Experiment
10. Side Bar
11. Fluxx
12. Prohibition
13. The Pool House
14. Fifth and Rose
15. Altitude

COFFEE

1. Starbucks
2. 401 Brew Street
3. Coffee N' Talk
4. 7 Cafe
5. Little Owl Coffee
6. Organo Gold
7. The Bean Box
8. Blue Bottle Coffee
9. Tired Eyes Coffee

PETER WRIGHT

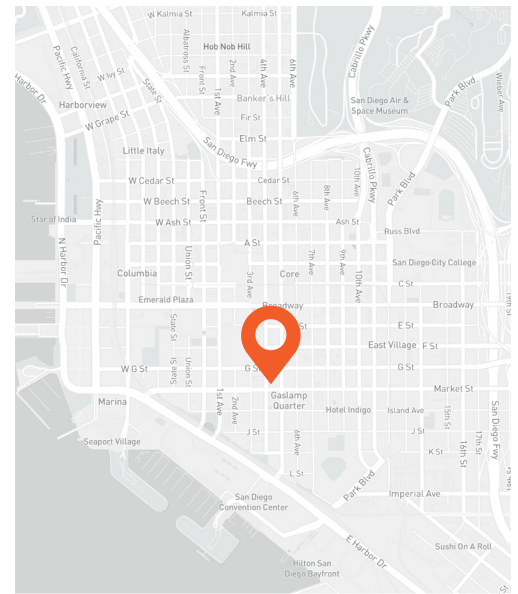
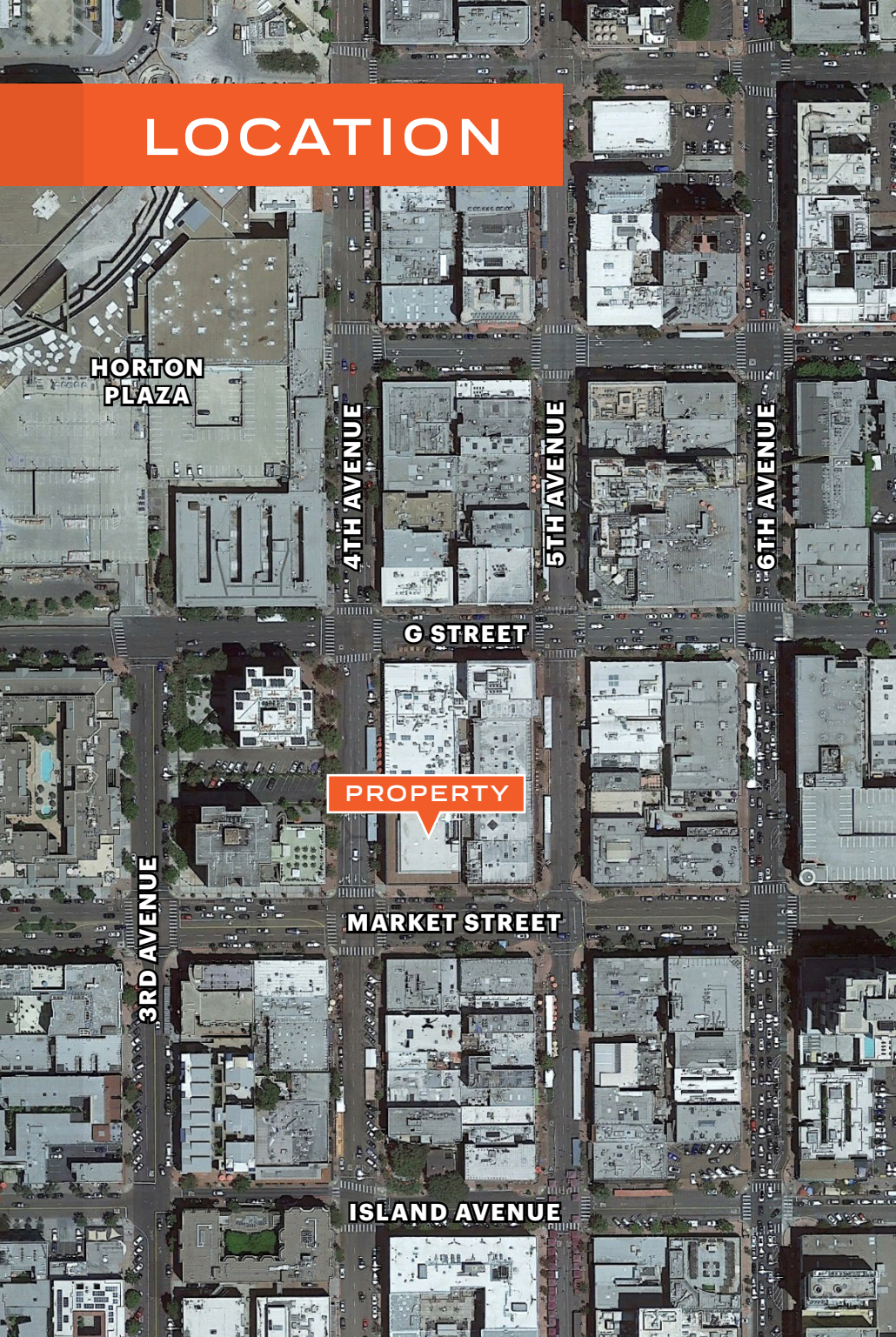
619.243.8450

pwright@qfcre.com

BRE #01846272

The information contained here has been obtained from sources considered to be reliable, but no guarantee of its accuracy is made by this company. In addition, no representation is made respecting zoning, condition of title, dimensions or any matters of a legal or environmental nature. Such matters should be referred to legal counsel for determination. Terms and conditions are subject to change without prior notice. Subject to errors and omissions.

LOCATION



- Terrific location on Market Street in Gaslamp District of Downtown San Diego
- In close proximity to Petco Park, San Diego Convention Center, and Horton Plaza
- Dozens of restaurants, cafes and bars within a 5-block radius

WALKING DISTANCE

to Numerous Restaurants & Retail

STEPS

to Petco Park & Trolley Station

PETER WRIGHT

619.243.8450

pwright@qfcre.com

BRE #01846272

The information contained here has been obtained from sources considered to be reliable, but no guarantee of its accuracy is made by this company. In addition, no representation is made respecting zoning, condition of title, dimensions or any matters of a legal or environmental nature. Such matters should be referred to legal counsel for determination. Terms and conditions are subject to change without prior notice. Subject to errors and omissions.

FOR SUBLEASE
422 Market Street
San Diego, California 92101



Contact Information

QFC REAL ESTATE
1495 Pacific Highway, Suite 450
San Diego, CA 92101
619.243.8454 • qfcre.com

PETER WRIGHT
619.243.8450
pwright@qfcre.com
BRE #01846272

The information contained here has been obtained from sources considered to be reliable, but no guarantee of its accuracy is made by this company. In addition, no representation is made respecting zoning, condition of title, dimensions or any matters of a legal or environmental nature. Such matters should be referred to legal counsel for determination. Terms and conditions are subject to change without prior notice. Subject to errors and omissions.