

WHITLOCK OFFICES

FOR LEASE



PROPERTY DETAILS

2511 S. West Temple, South Salt Lake, UT 84115

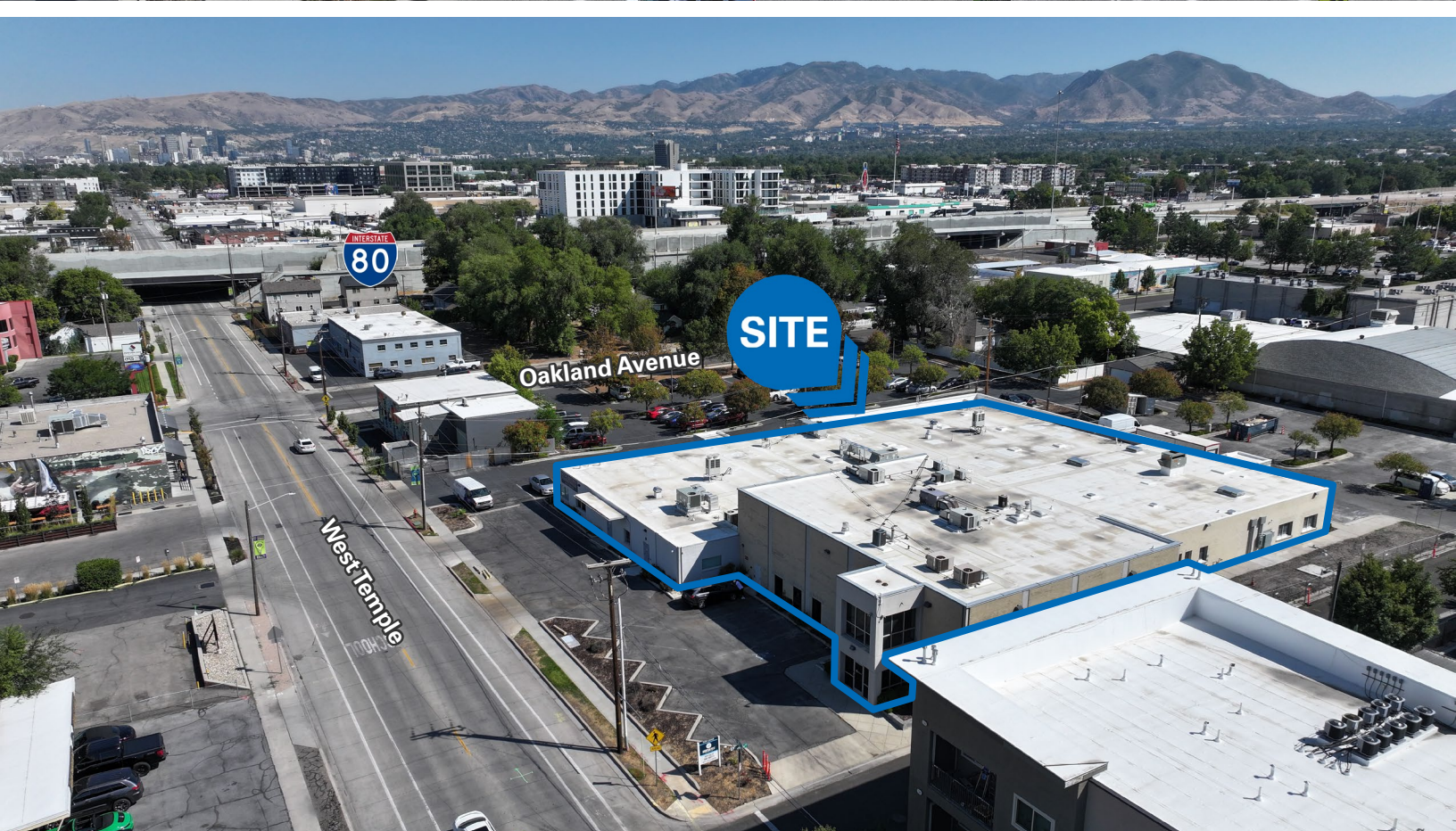
- Two-Story Building with 9,211 SF Available
 - » First Floor: 2,224 RSF
 - » Second Floor: 6,987 RSF
- \$16.00 PSF Full-Service
- Possible Uses Include: Office, Medical Office, Retail, and Light Industrial
- Ample Parking Included On-Site
- Neighboring Tenants Include Intermountain Health
- Nearby Amenities Include Level Crossing Brewery and Bonwood Bowl
- Recently Completed Renovations, Ready for Improvements
- Quick Access to I-80
- Zoning: TOD



ANDY MOFFITT
amoffitt@newmarkmw.com
direct 801.456.8811
[View Profile](#)

SKYE GALLEY
sgalley@newmarkmw.com
direct 801.971.3602
[View Profile](#)

**FULL SERVICE
COMMERCIAL REAL ESTATE**
312 East South Temple
Salt Lake City, Utah 84111
Office 801.456.8800
www.newmarkmw.com



NEWMARK
MOUNTAIN WEST

ANDY MOFFITT
amoffitt@newmarkmw.com
direct 801.456.8811
[View Profile](#)

SKYE GALLEY
sgalley@newmarkmw.com
direct 801.971.3602
[View Profile](#)

**FULL SERVICE
COMMERCIAL REAL ESTATE**
312 East South Temple
Salt Lake City, Utah 84111
Office 801.456.8800
www.newmarkmw.com

WHITLOCK OFFICES

SITE PLAN



ANDY MOFFITT
amoffitt@newmarkmw.com
direct 801.456.8811
[View Profile](#)

SKYE GALLEY
sgalley@newmarkmw.com
direct 801.971.3602
[View Profile](#)

**FULL SERVICE
COMMERCIAL REAL ESTATE**
312 East South Temple
Salt Lake City, Utah 84111
Office 801.456.8800
www.newmarkmw.com

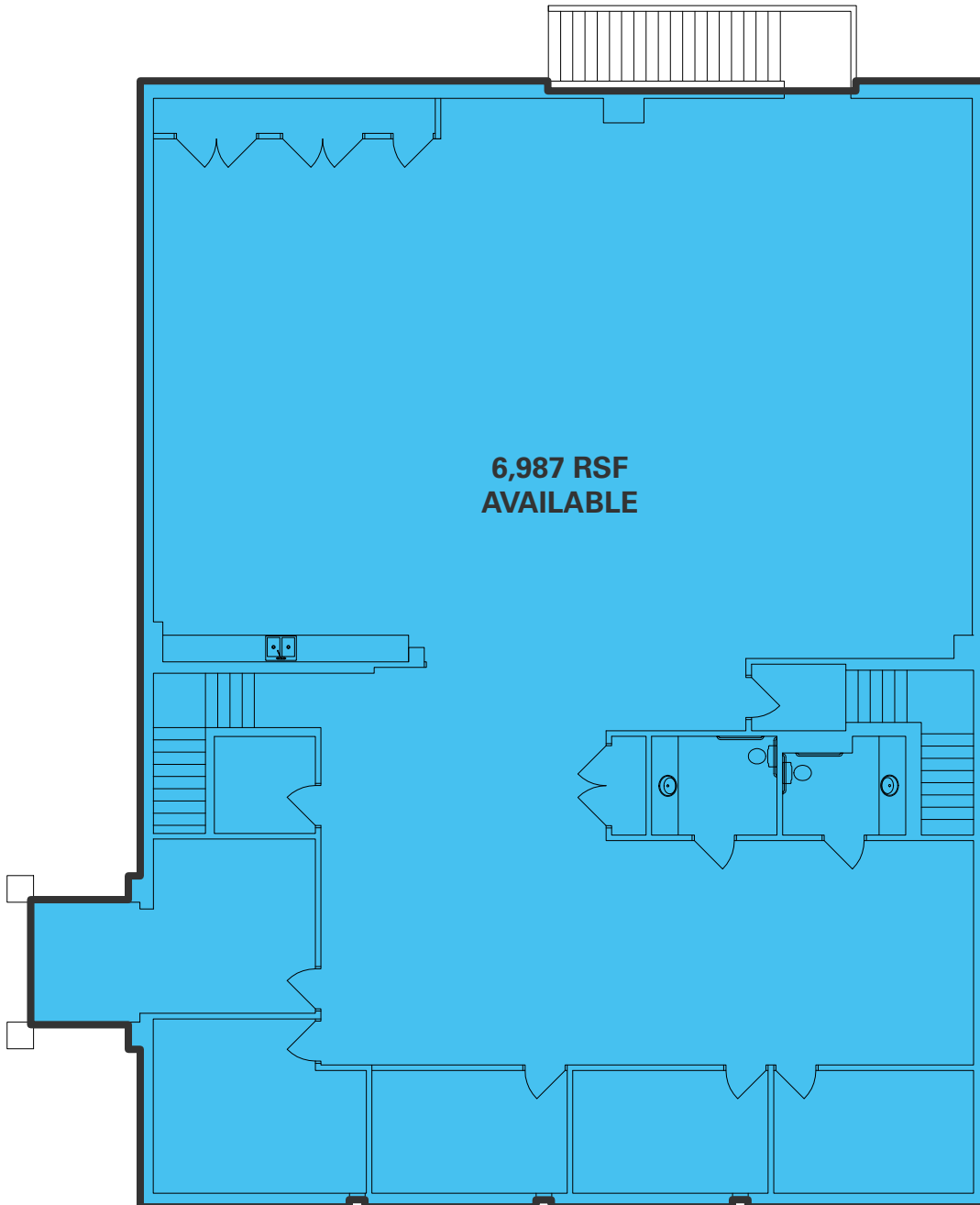
SITE PLAN



**FULL SERVICE
COMMERCIAL REAL ESTATE**
312 East South Temple
Salt Lake City, Utah 84111
Office 801.456.8800
www.newmarkmw.com

WHITLOCK OFFICES

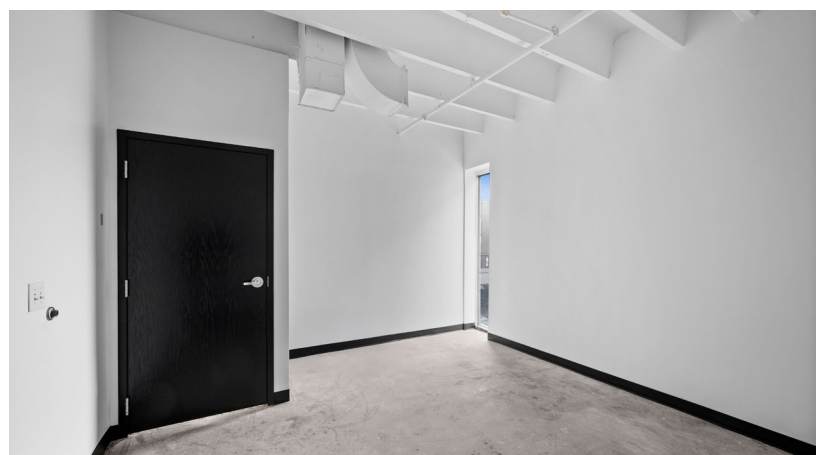
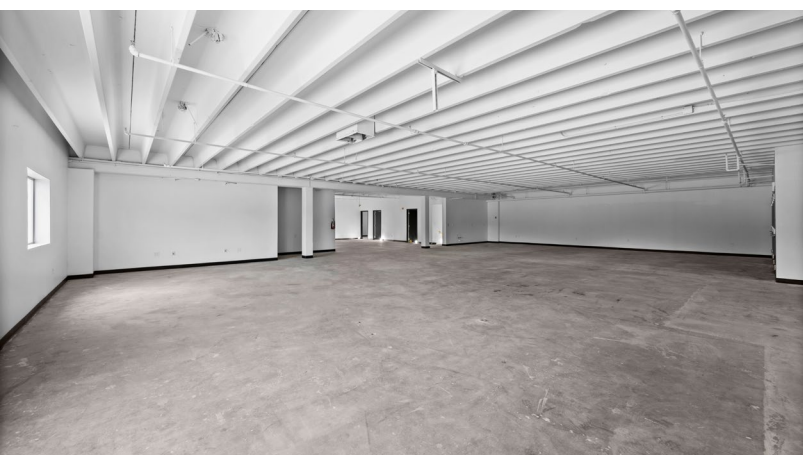
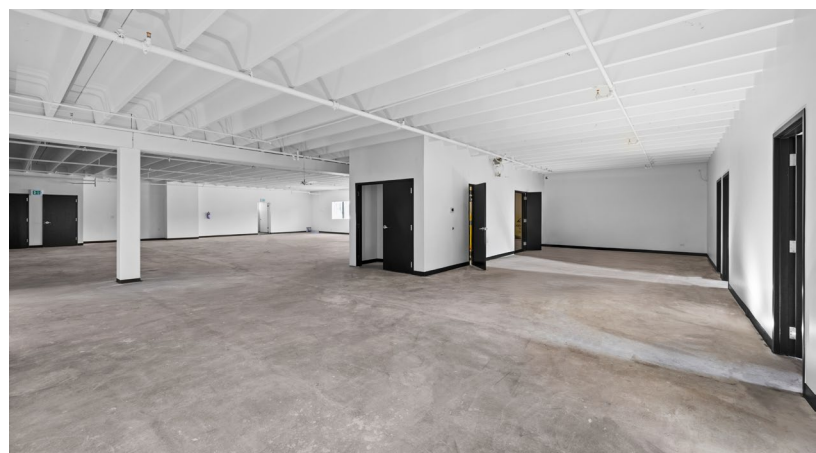
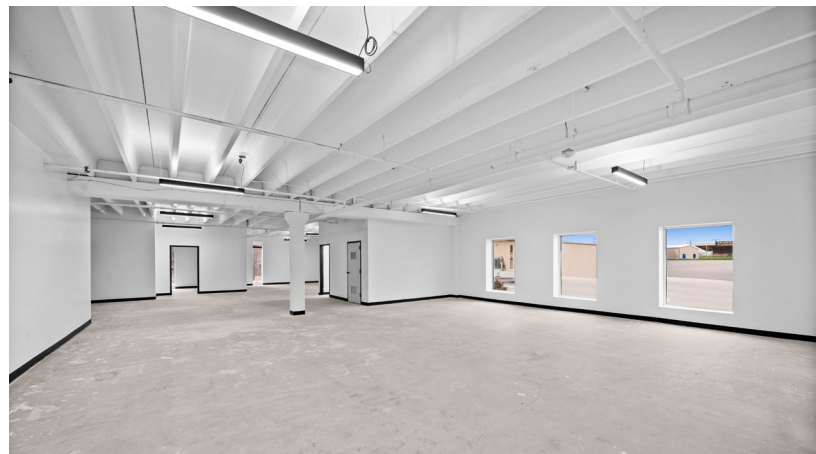
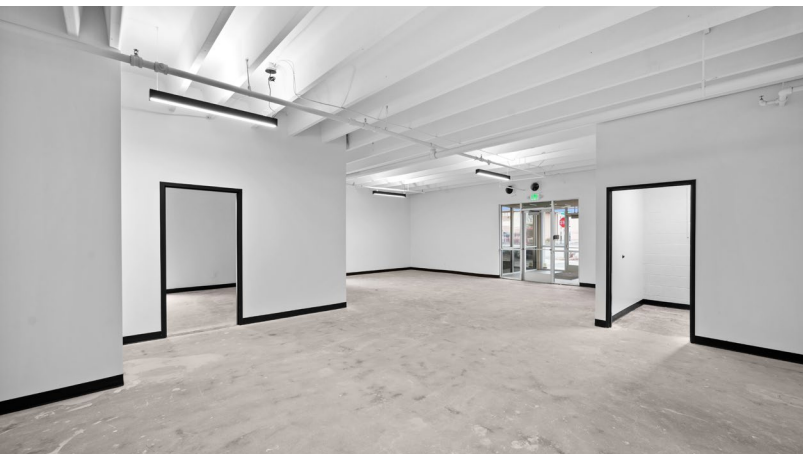
LEVEL 2 FLOOR PLAN



ANDY MOFFITT
amoffitt@newmarkmw.com
direct 801.456.8811
[View Profile](#)

SKYE GALLEY
sgalley@newmarkmw.com
direct 801.971.3602
[View Profile](#)

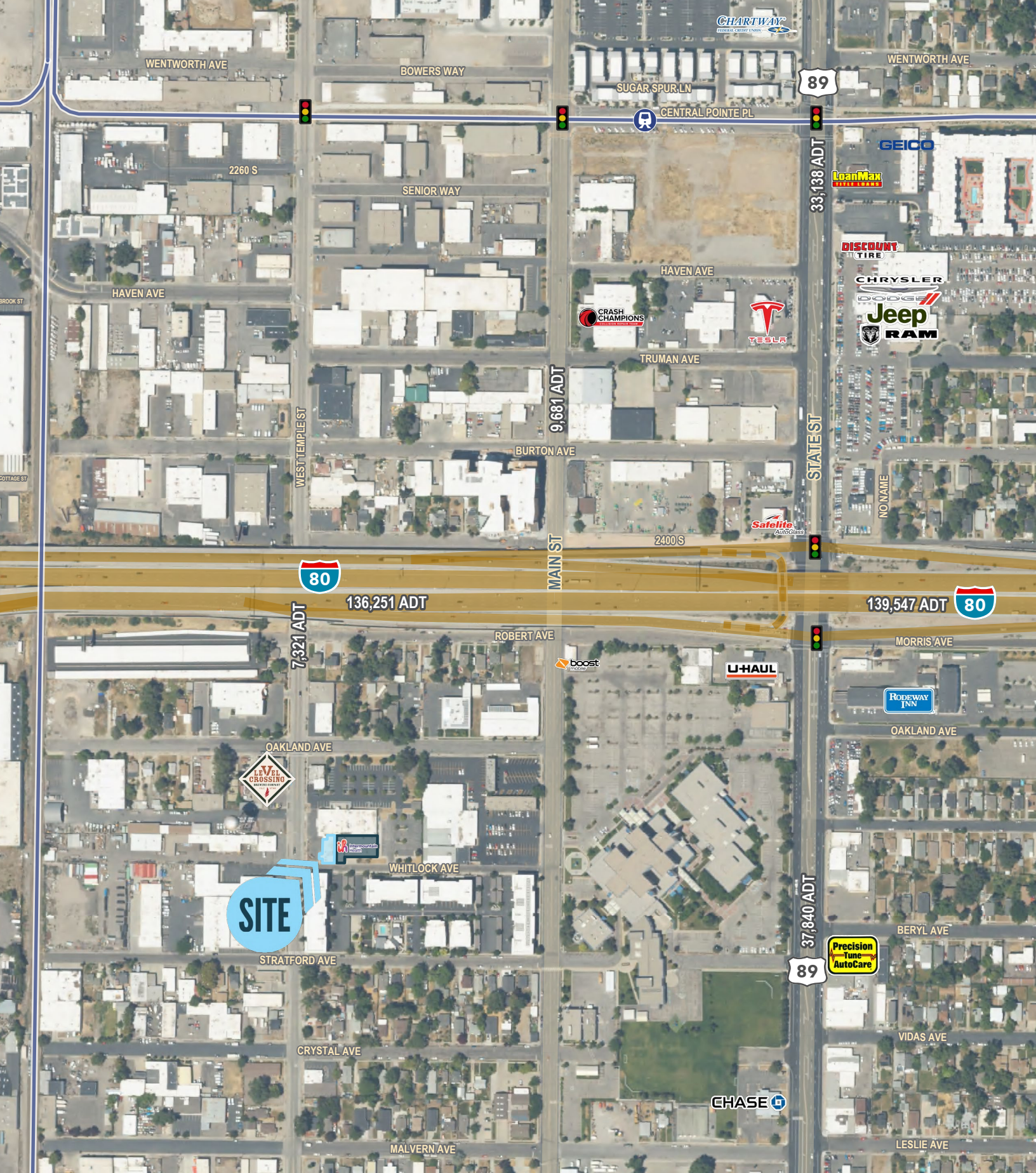
**FULL SERVICE
COMMERCIAL REAL ESTATE**
312 East South Temple
Salt Lake City, Utah 84111
Office 801.456.8800
www.newmarkmw.com



ANDY MOFFITT
 amoffitt@newmarkmw.com
 direct 801.456.8811
[View Profile](#)

SKYE GALLEY
 sgalley@newmarkmw.com
 direct 801.971.3602
[View Profile](#)

**FULL SERVICE
 COMMERCIAL REAL ESTATE**
 312 East South Temple
 Salt Lake City, Utah 84111
 Office 801.456.8800
www.newmarkmw.com



ANDY MOFFITT
 amoffitt@newmarkmw.com
 direct 801.456.8811
[View Profile](#)

SKYE GALLEY
 sgalley@newmarkmw.com
 direct 801.971.3602
[View Profile](#)

**FULL SERVICE
 COMMERCIAL REAL ESTATE**
 312 East South Temple
 Salt Lake City, Utah 84111
 Office 801.456.8800
www.newmarkmw.com