

205 DETROIT STREET

TOP FLOOR
AVAILABLE
Q3 2026

CLASS A OFFICE SUBLEASE
AVAILABLE IN CHERRY CREEK NORTH!



15,808 RSF AVAILABLE
TERM THROUGH 6/30/31





BUILDING DETAILS:



BUILDING SIZE:
74,085 RSF



CLASS:
A



BUILT IN:
2019



PARKING:
1.5:1,000



**TYPICAL
FLOORPLATE**
10,000 RSF



FLOORS:
8



**9,869 RSF
ON FLOOR 8
(NOT DIVISIBLE FROM FLOOR 7)**



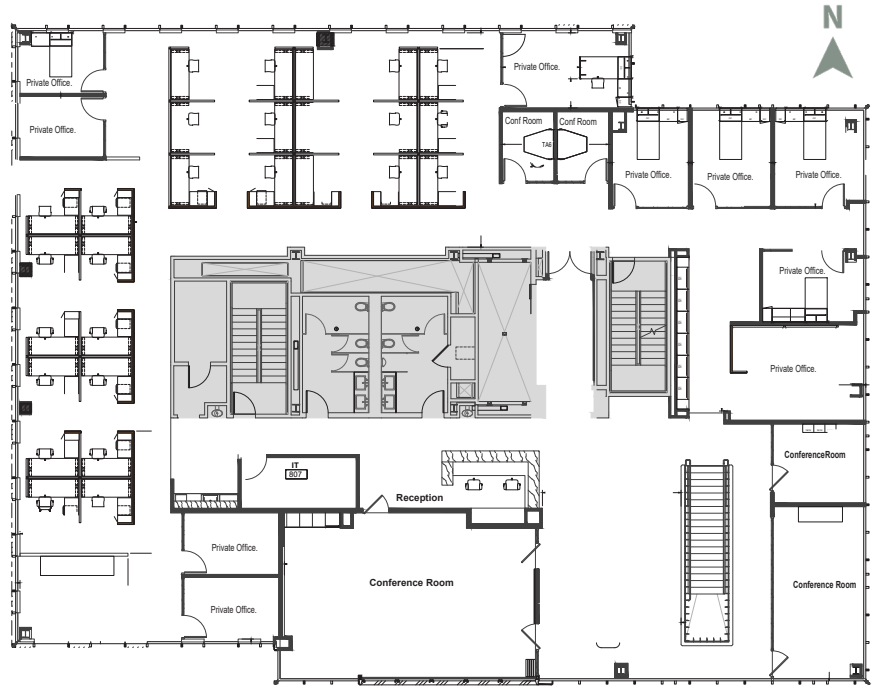
**INTERCONNECTED
STAIRWELL**

**5,939 RSF
ON FLOOR 7
(NOT DIVISIBLE FROM FLOOR 8)**

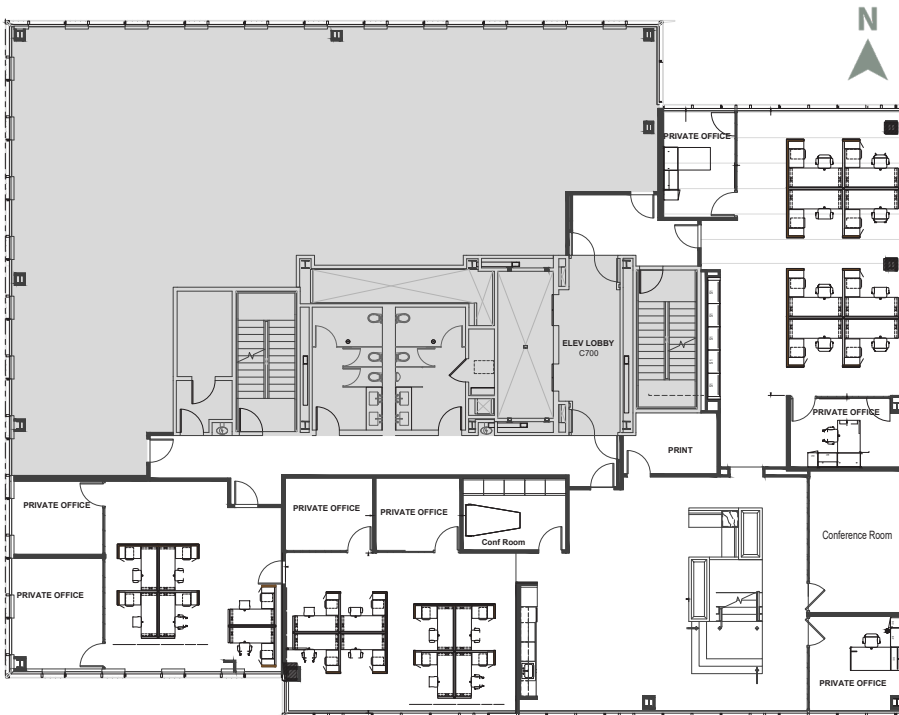


**RARE, TWO-
FLOOR BLOCK
IN THE HEART
OF CHERRY CREEK
NORTH.**

8TH FLOOR: 9,869 SF



7TH FLOOR: 5,939 SF



SUBLEASE DETAILS:

SUBLEASE SIZE:
15,808 RSF

AVAILABLE:
Q3 2026

TERM:
Through 6/30/31

RATE:
Negotiable

BUILDING SIGNAGE:
Available

FOR LEASING INFORMATION CONTACT:

JLL

Jamie Roupp

+1 303 217 7947

james.roupp@jll.com

JLL

John Beason

+1 303 217 7949

john.beason@jll.com

Roche & Company

Roche Fore

+1 720 560 5605

roche@rochecompany.com

