

Westbrook II

8016 Reeder Street, Lenexa, KS 66214

For Lease



Immediate Access to I-35 & I-435

- 1,755± Square Feet Available
- 100% Office | Warehouse Space Available if Needed
- 1 Covered Drive-In Door
- 14' Clear Height

For more information:

Zach Hubbard, SIOR
816.932.5504
zhubbard@blockllc.com

Blaise Gunnerson
816.878.6314
bgunnerson@blockllc.com

The information contained in this marketing flyer is presented as general information only. Block Real Estate Services, LLC makes no representation as to its accuracy. This information is not intended as legal, financial or real estate advice and must not be relied upon as such. You should make your own inquiries, obtain independent inspections, and seek professional advice tailored to your specific circumstances before making any legal, financial or real estate decisions.

Building Specifications

Square Feet Available:	1,755± SF
Total Building Square Footage:	35,901± SF
Year Built:	1987
Loading Type:	Rear
Truck Court Depth:	85'
Loading:	1 Covered Drive-In Door
Clear Height:	14'
Column Spacing:	30' x 25'
Lighting:	LED
Parking Ratio:	3.76/1,000 SF
Type of Lease:	Industrial Gross
Offering Rate:	TBD
CAM (2025 Estimates):	\$2.58 PSF

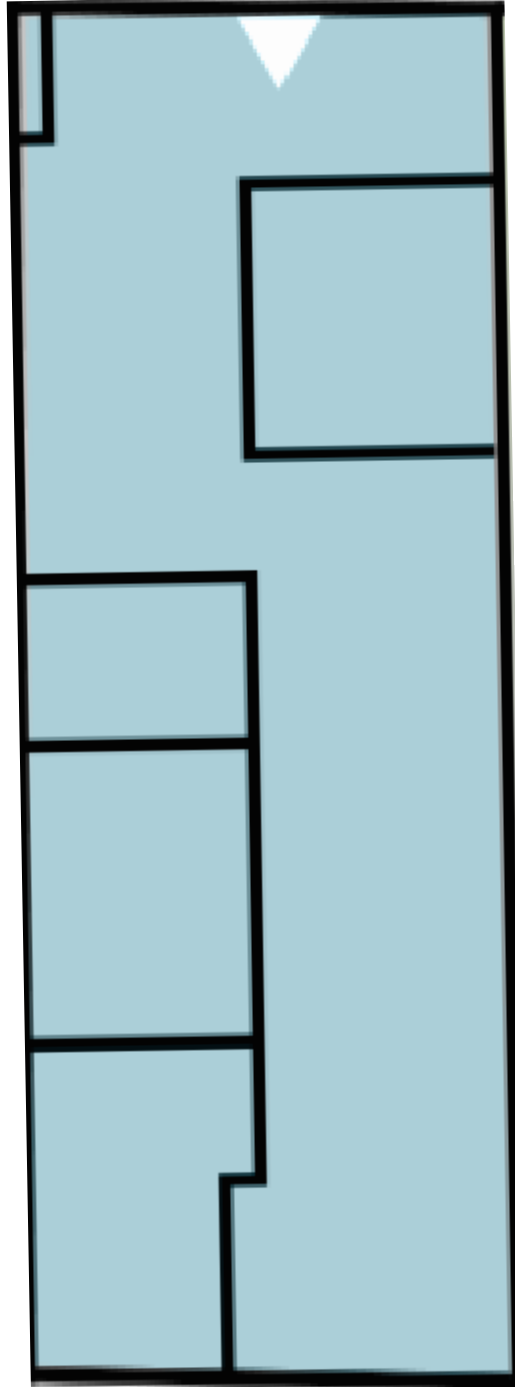
For more information:

Zach Hubbard, SIOR
816.932.5504
zhubbard@blockllc.com

Blaise Gunnerson
816.878.6314
bgunnerson@blockllc.com

Suite 8016 Floor Plan

Covered Drive-In Door



Westbrook II

8016 Reeder Street, Lenexa, KS 66214

For Lease

Site Plan



Westbrook II

8016 Reeder Street, Lenexa, KS 66214

For Lease



For more information:

Zach Hubbard, SIOR

816.932.5504

zhubbard@blockllc.com

Blaise Gunnerson

816.878.6314

bgunnerson@blockllc.com