

2411 W ROSE GARDEN LN, PHOENIX, AZ



OFFICE PROPERTY FOR LEASE

OFFERING SUMMARY

Available SF:	Ste #120 7,500 SF
Lease Rate:	\$20.00 SF/yr (NNN)
Lot Size:	6.88 Acres
Building Size:	68,600 SF
Building Class:	B
Year Built:	1998
Zoning:	IND.PK.

PROPERTY HIGHLIGHTS

- - Modern, flexible office spaces
- - Ample parking
- - Contemporary finishes
- - Role Up Door Optional
- - Convenient property management
- - Tenant Improvements Available
- - Versatile floor plan options
- - GC Owned Building
- - Competitive lease terms

COMMERCIAL 33

ACQUISITION | CAPITAL | DISPOSITION

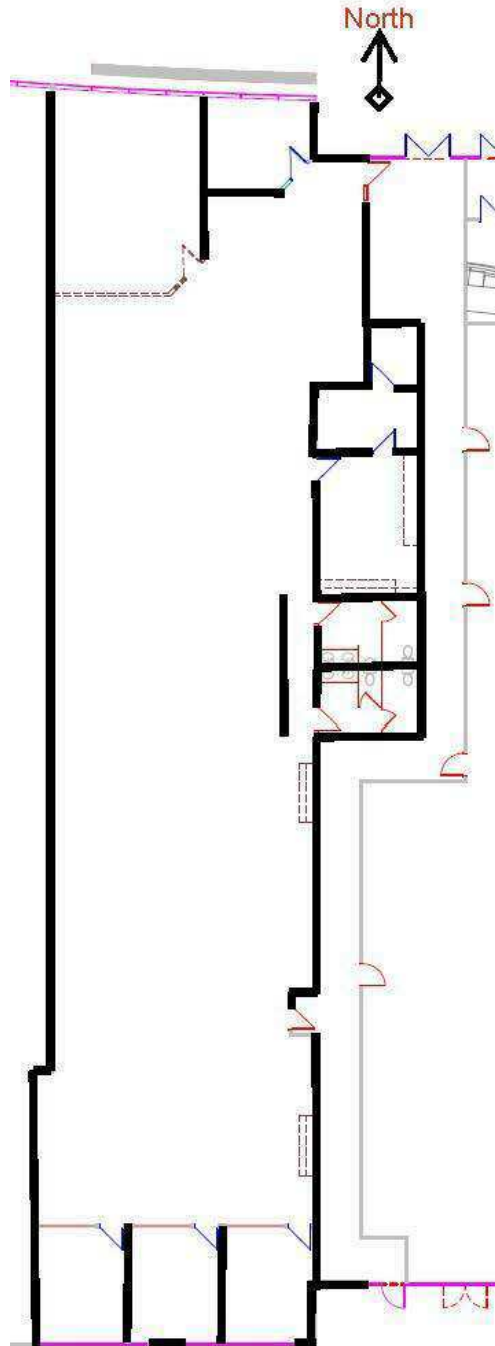
FOR MORE INFORMATION CONTACT:

JOSH LANDERS Partner

josh@cre33.com (P) 480.217.9599 (C) 480.217.9599

We obtained the information above from sources we believe to be reliable. However, we have not verified its accuracy and make no guarantee, warranty or representation about it. It is submitted subject to the possibility of errors, omissions, change of price, rental or other conditions, prior sale, lease or financing, or withdrawal without notice. We include projections, opinions, assumptions or estimates for example only, and they may not represent current or future performance of the property. You and your tax and legal advisors should conduct your own investigation of the property and transaction.

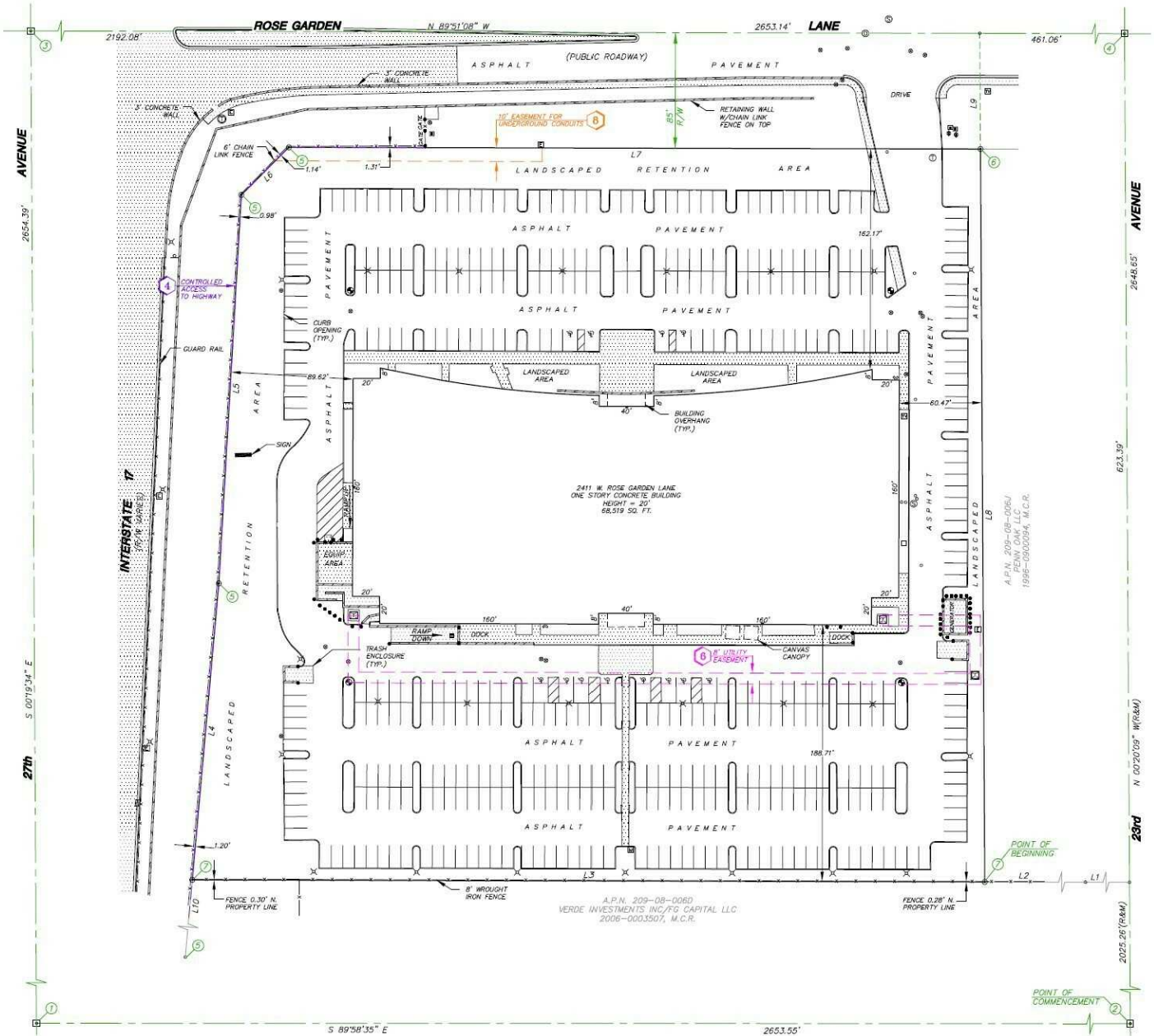
2411 W ROSE GARDEN LN, PHOENIX, AZ



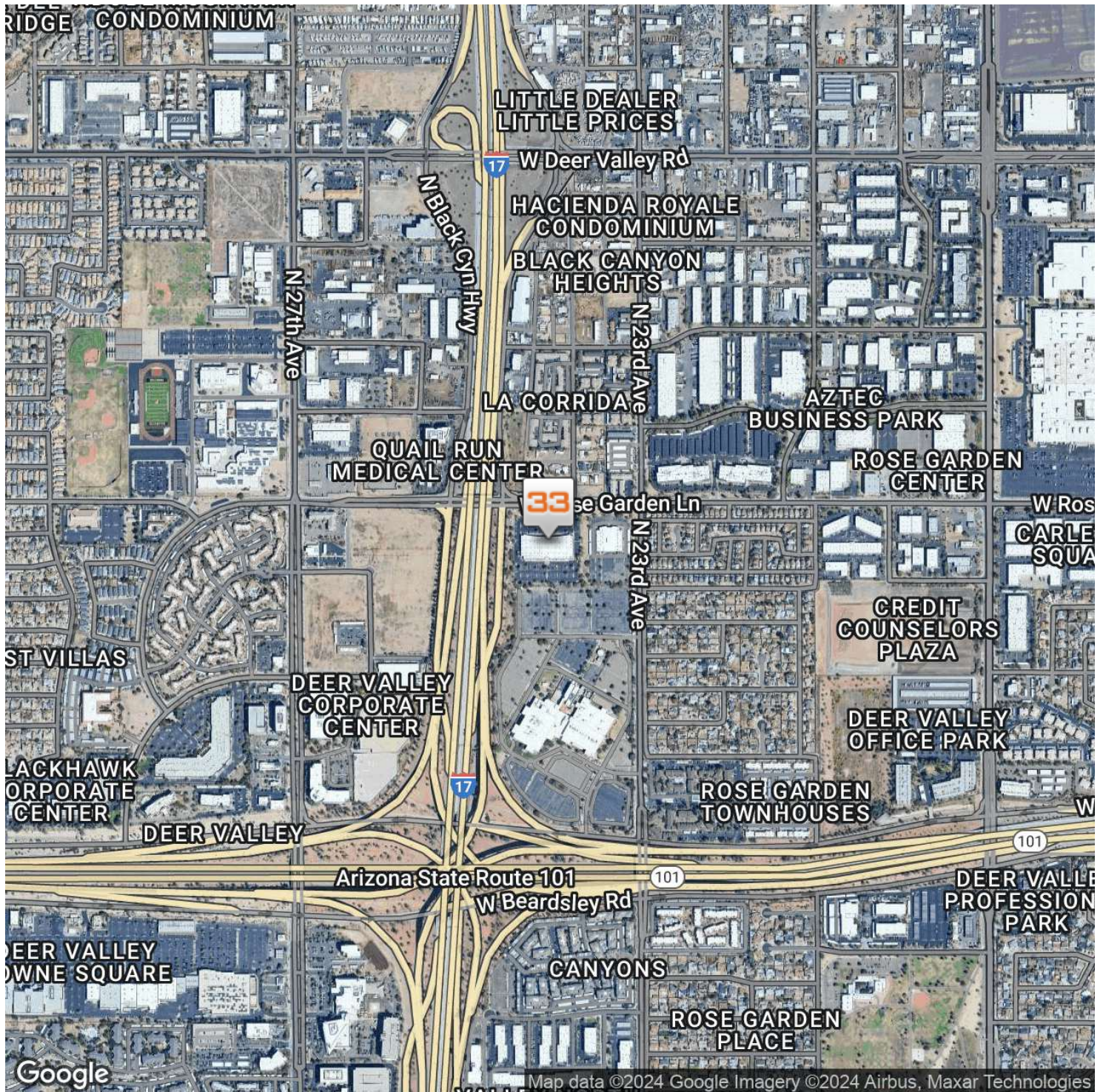
2411 W ROSE GARDEN LN, PHOENIX, AZ



2411 W ROSE GARDEN LN, PHOENIX, AZ



2411 W ROSE GARDEN LN, PHOENIX, AZ



COMMERCIAL 33

ACQUISITION | CAPITAL | DISPOSITION

FOR MORE INFORMATION CONTACT:

JOSH LANDERS Partner

josh@cre33.com (P) 480.217.9599 (C) 480.217.9599

We obtained the information above from sources we believe to be reliable. However, we have not verified its accuracy and make no guarantee, warranty or representation about it. It is submitted subject to the possibility of errors, omissions, change of price, rental or other conditions, prior sale, lease or financing, or withdrawal without notice. We include projections, opinions, assumptions or estimates for example only, and they may not represent current or future performance of the property. You and your tax and legal advisors should conduct your own investigation of the property and transaction