

# OFFICE FOR LEASE

**1,715 SF AVAILABLE**



## OCEANA PROFESSIONAL PARK

**936 General Booth Boulevard**  
**Virginia Beach, VA 23451**

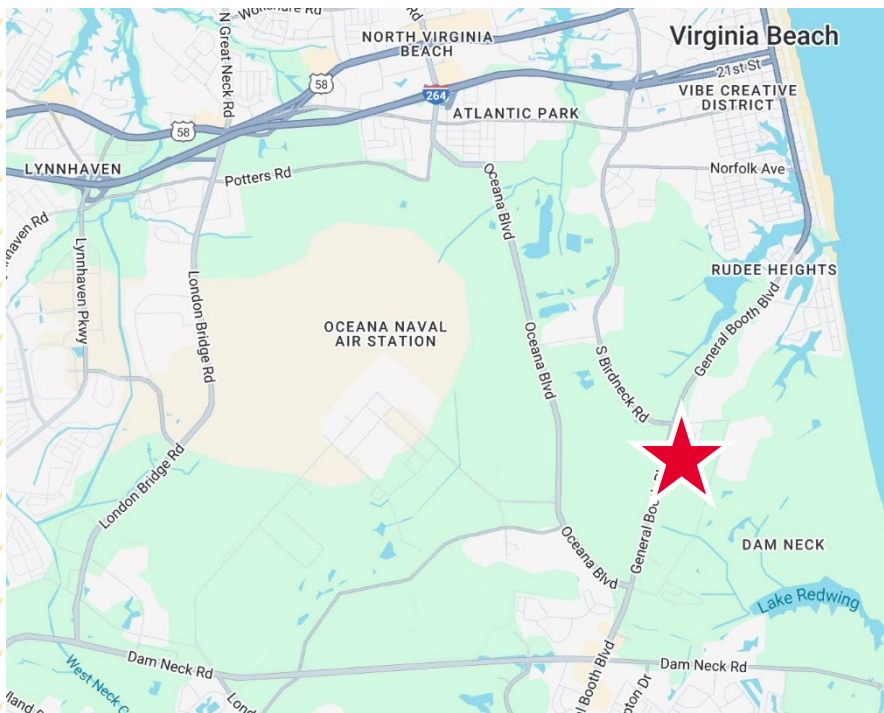


**THALHIMER**

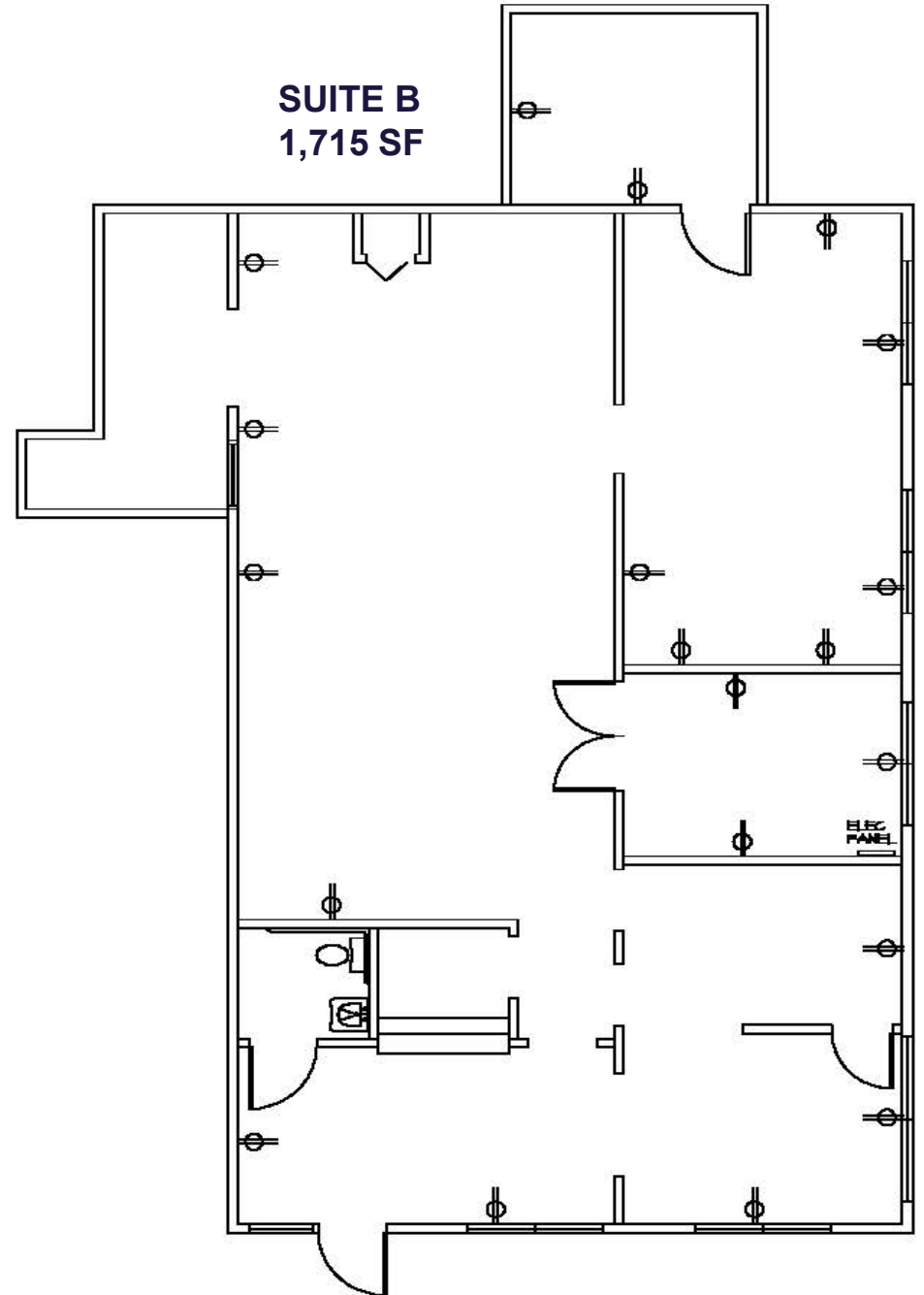


# PROPERTY HIGHLIGHTS

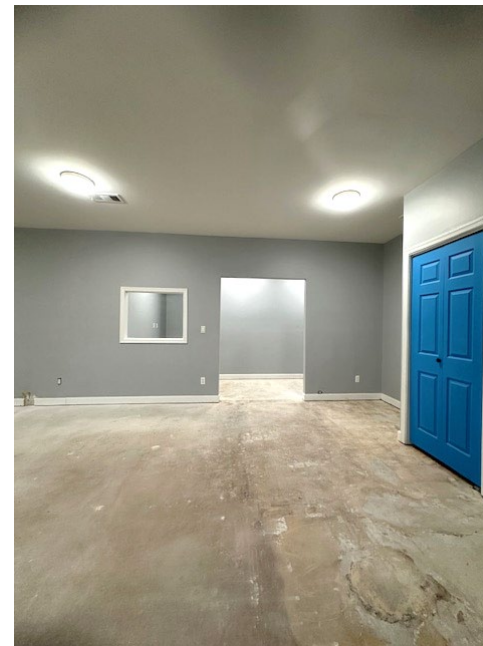
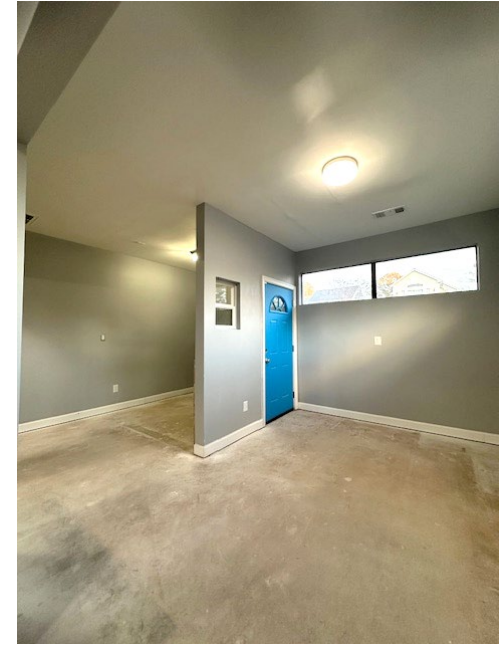
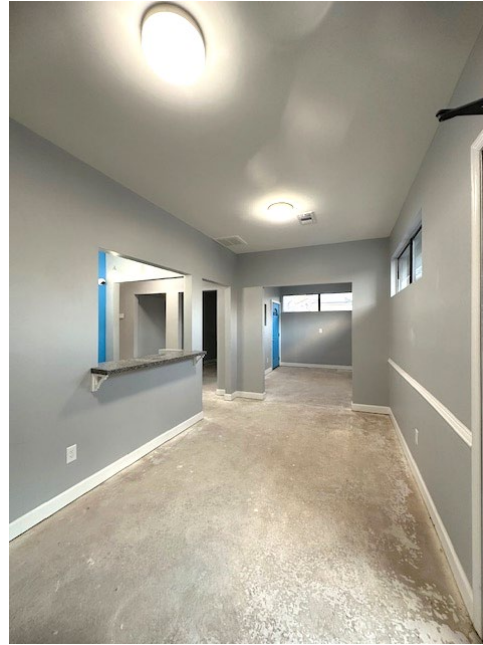
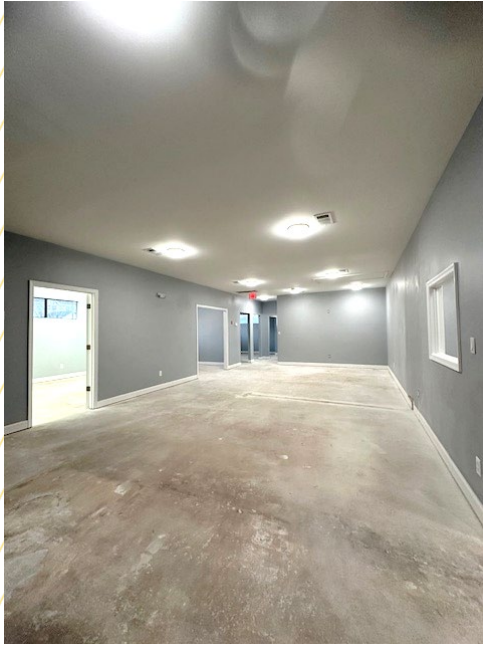
- One-story medical/professional office building
- Suite B - 1,715 SF available now
- Rare availability - Small office space in the General Booth corridor; Close to Oceanfront and Oceana
- Zoned O2
- Signage available
- Lease Rate - \$19.00 SF, Net of electric and janitorial



**SUITE B**  
**1,715 SF**



# PROPERTY PHOTOS







# CONTACT INFORMATION

## NICOLE CAMPBELL

Vice President  
 757 499 0783  
 nicole.campbell@thalhimer.com



Town Center of Virginia Beach  
 222 Central Park Avenue, Suite 1500  
 Virginia Beach, VA 23462  
 thalhimer.com

Independently Owned and Operated / A Member of the Cushman & Wakefield Alliance

Cushman & Wakefield | Thalhimer © 2025. No warranty or representation, express or implied, is made to the accuracy or completeness of the information contained herein, and same is submitted subject to errors, omissions, change of price, rental or other conditions, withdrawal without notice, and to any special listing conditions imposed by the property owner(s). As applicable, we make no representation as to the condition of the property (or properties) in question.