

# 1914 Association Drive

## 1st Floor

### Reston, VA 20191



40 Walking Score



0.4 miles to Wiehle-Reston East Station



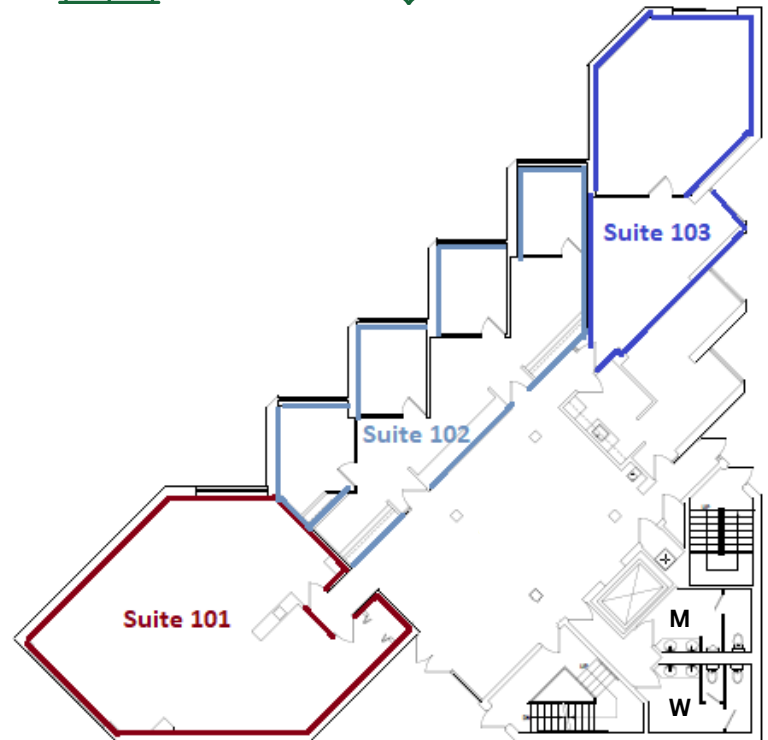
Class B Property



Dulles Toll Road, Tysons, Route 7 & Fairfax County Parkway

This well-maintained recently renovated 3 story building with loading dock and patio contains units ranging in size from 1,071 sq ft to 4,298 sq ft and 13,877 sq ft for the entire building. Three to ten-year lease preferred. Net lease for individual suites and NNN lease for entire building.

Lessee must submit an application, first month's rent, security deposit, and signed personal guaranty to secure space.



#### Suite Information:

**Suite 101** - 1,525 SF

**Suite 102** - 1,425 SF

**Suite 103** - 1,513 SF

**\$24.00/ft on 5-year Term**

**Net Lease (Est \$4.95/ft)**

**(Other lease options available)**

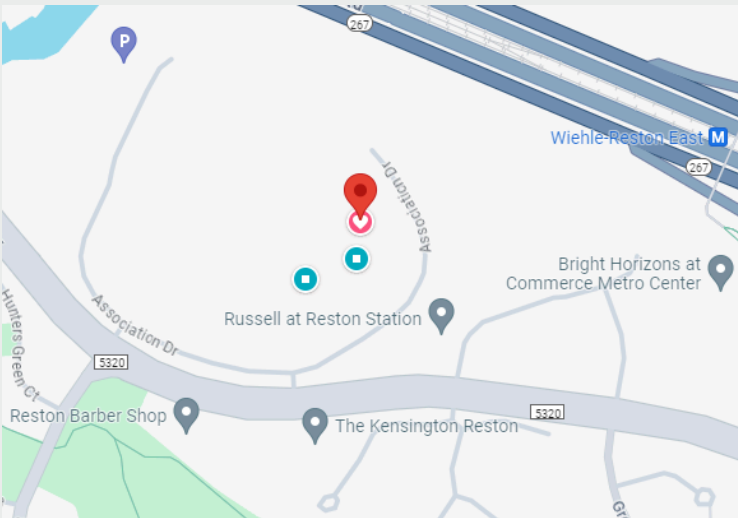
#### Building Amenities:

- 21 Parking Spaces
- 24/7 Building Access
- Kitchenette and Breakroom
- Bathrooms On All Floors
- Elevated
- Sprinklered

**Apply today!**



**RYAN STUART**  
DEVELOPMENT



### Reston Location:

1914 Association Drive is a spectacular building located in desired area of Reston, close to Metro, dining and shops. This building boasts recently renovated common hallways, spec suites. Welcoming front lobby area features 2-story atrium with glass ceiling and elevator to every floor. Bathrooms are located on every floor and kitchenette is on the main-level. The area around 1914 Association has mature landscaping and excellent views from all-sides and enjoy the side patio when you need a break from the office!

Contact our Leasing Team  
Dyana & Damaris at  
703.323.3900  
[Leasing@RyanSDev.com](mailto:Leasing@RyanSDev.com)



Scan QR for  
other listings!