

164 20TH ST 4E  
SOUTH SLOPE

OFFICE  
FOR LEASE





**164 20TH ST 4E**  
**SOUTH SLOPE**



**JUSTIN LOSH**

(347) 388-4649

JUSTIN@COUNTRYNY.COM



**OFFICE**

250 MOORE ST, #302

BROOKLYN, NY 11206



## PROPERTY DETAILS



**\$5,500 PER MONTH**



**1,470 SF**



**NEGOTIABLE LEASE LENGTH**

TURNKEY OFFICE SPACE

CONFERENCE ROOM

2 PRIVATE OFFICES

1 EXECUTIVE OFFICE

BULLPEN AND ADMINISTRATIVE DESK  
WITH SEPARATE KITCHEN AREA

EN SUITE BATHROOM

GREAT NATURAL LIGHT

PARKING AVAILABLE FOR AN  
ADDITIONAL FEE

ELEVATOR BUILDING



164 20TH ST 4E  
SOUTH SLOPE



JUSTIN LOSH

(347) 388-4649

JUSTIN@COUNTERNY.COM



OFFICE

250 MOORE ST, #302

BROOKLYN, NY 11206



**164 20TH ST 4E**  
**SOUTH SLOPE**



**JUSTIN LOSH**

(347) 388-4649

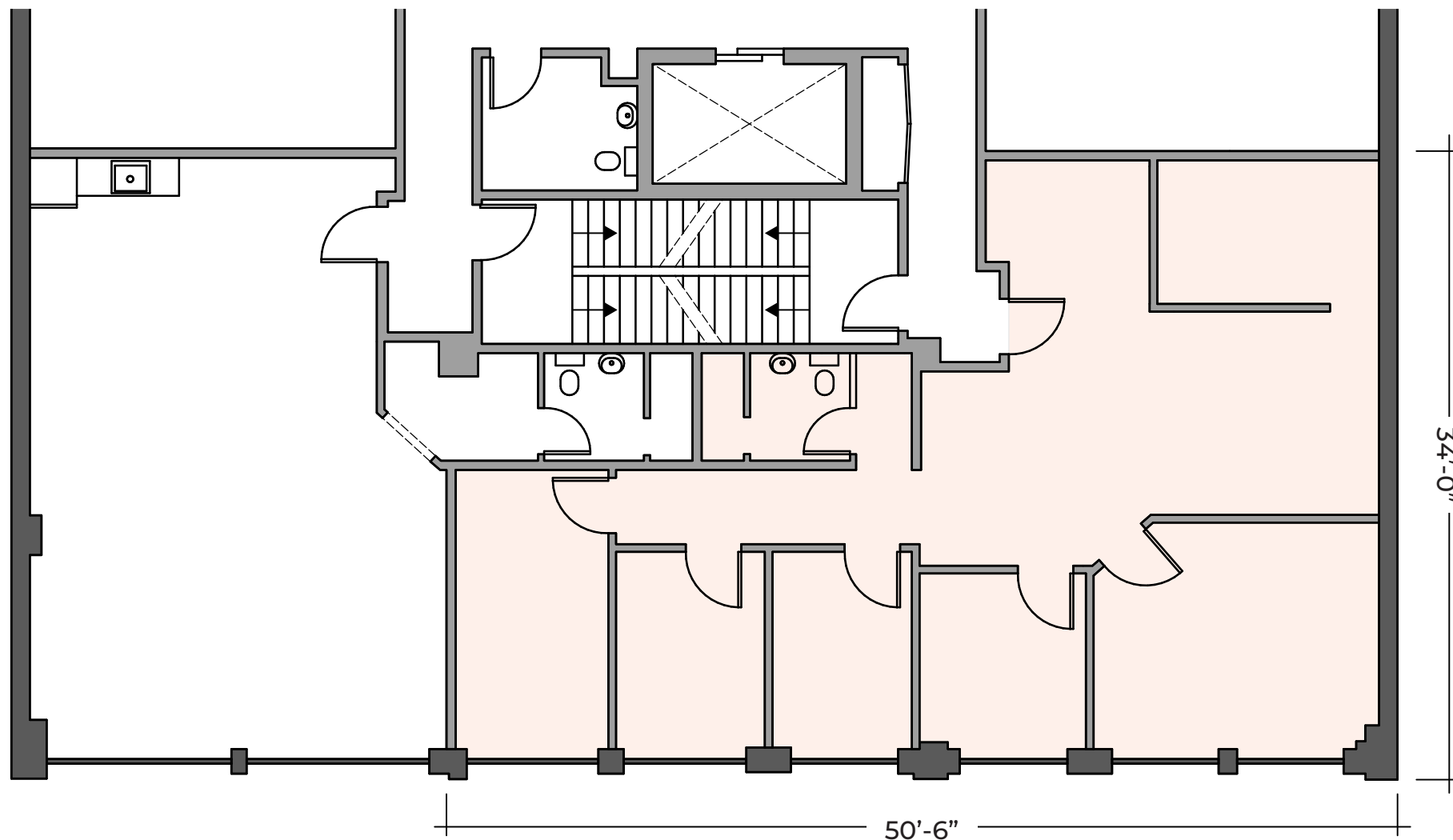
JUSTIN@COUNTRYNY.COM



**OFFICE**

250 MOORE ST, #302

BROOKLYN, NY 11206



Disclaimer: Please note this floor plan is for marketing purposes and is only to be used as a guide. All efforts have been made to ensure its accuracy at time of print. Approximate measurements listed in this floor plan are reflective of the interior space dimensions only.

# 164 20TH ST 4E SOUTH SLOPE



JUSTIN LOSH

(347) 388-4649

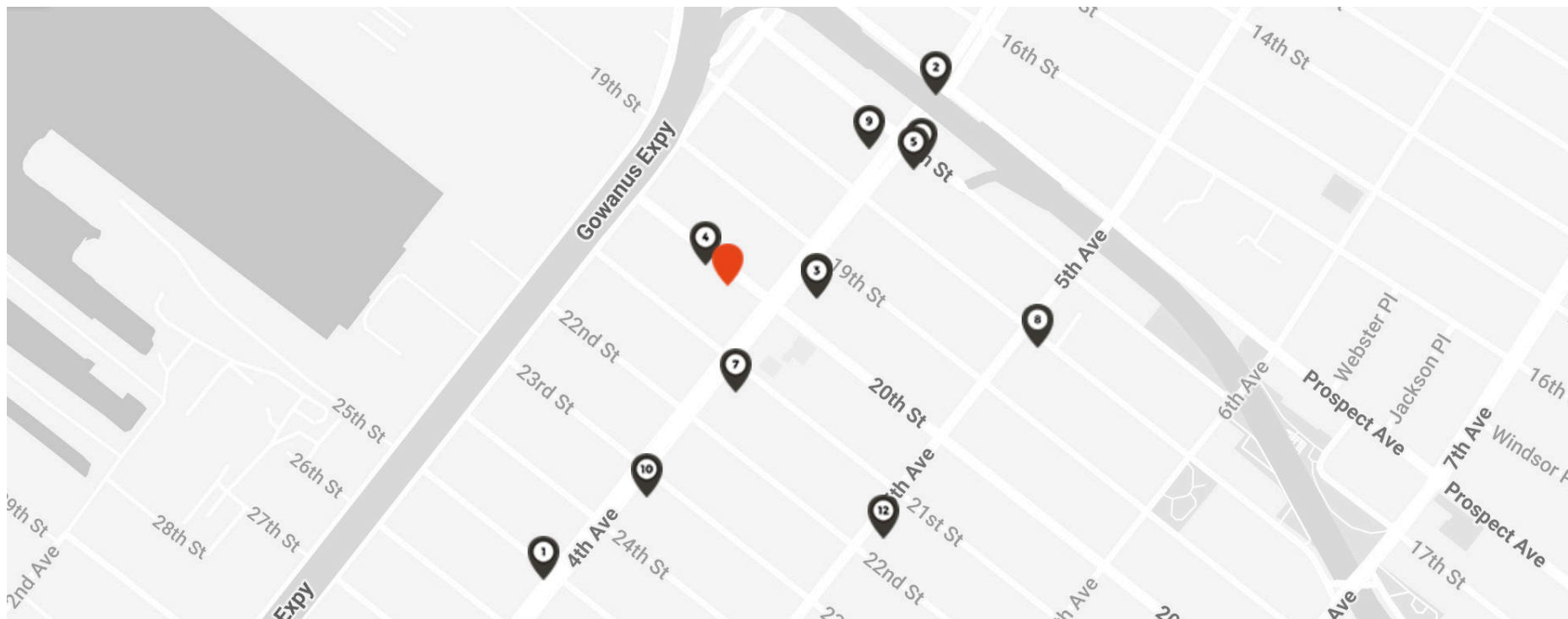
JUSTIN@COUNTRYNY.COM



OFFICE

250 MOORE ST, #302

BROOKLYN, NY 11206



## NEIGHBORS

- 1 - R TRAIN - 25TH ST
- 2 - R TRAIN - PROSPECT AVE
- 3 - BROTHERS PIZZA
- 4 - COMFORT INN PROSPECT PARK
- 5 - PEP BAKEHOUSE & COFFEE SHOP
- 6 - EARTH'S BASKET

- 7 - GODOG (DOG WALKING/SITTER)
- 8 - ROOTS CAFE
- 9 - BREAD & JOE
- 10 - TIN CUP CAFE
- 11 - ONE STOP DELI & GRILL
- 12 - SEA WITCH SOUTH SLOPE

## DEMOGRAPHICS

(1MI/3MI)  
POPULATION - 62,530 / 982,966  
AVERAGE AGE - 38.3 / 37.6  
AVERAGE HH INCOME -  
\$136,331 / \$116,499

## TRANSPORT

R TRAIN: 25TH ST  
R TRAIN: PROSPECT AVE  
AVERAGE DAILY RIDERS  
WEEKDAY - 3,738  
WEEKEND - 3,703