

**PORTA
& CO.**

Downtown Portland Office Space For Lease

30 Danforth Street | Portland, ME



Property Highlights

- Available office suites range from 2,350 - 8,569± SF
- Professionally managed property
- Exposed brick and beam finishes
- Reserved Parking available in adjacent surface lot at Market Rates
- Fitness Facility available to all Tenants
- Centrally located in Portland's Old Port
- Lease Rate: \$16.00 - \$19.00/SF NNN



PORTA & CO.

COMMERCIAL REAL ESTATE

30 Milk Street, Second Floor
Portland, ME 04101
207-747-1515
www.portacompany.com

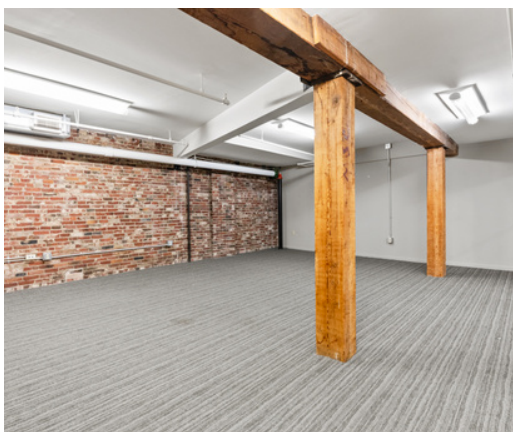
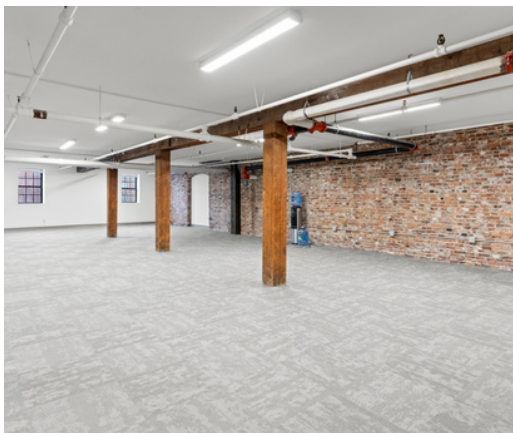
LANDLORD	J.B. BROWN & SONS
AVAILABLE SPACES	<p>SUITE 207: 3,154± SF \$16.00/SF SUITE 209: 2,744± SF \$16.00/SF SUITE 210: 2,750± SF \$18.00/SF SUITE 305: 2,350± SF* \$19.00/SF SUITE 306: 3,787± SF* \$19.00/SF SUITE 307: 2,432± SF* \$19.00/SF <i>*can be combined for a total of 6,219 - 8,569± SF</i></p>
PARKING	AVAILABLE IN SURFACE LOT AT MARKET RATES
HVAC	NATURAL GAS FIRED, CENTRAL HVAC
UTILITIES	SEPARATELY METERED
ELEVATORS	YES - ONE (1)
RESTROOMS	IN COMMON ON EACH FLOOR
LEASE RATE	\$16.00 - \$19.00/SF MODIFIED GROSS



PORTA
& CO.

PHOTOS

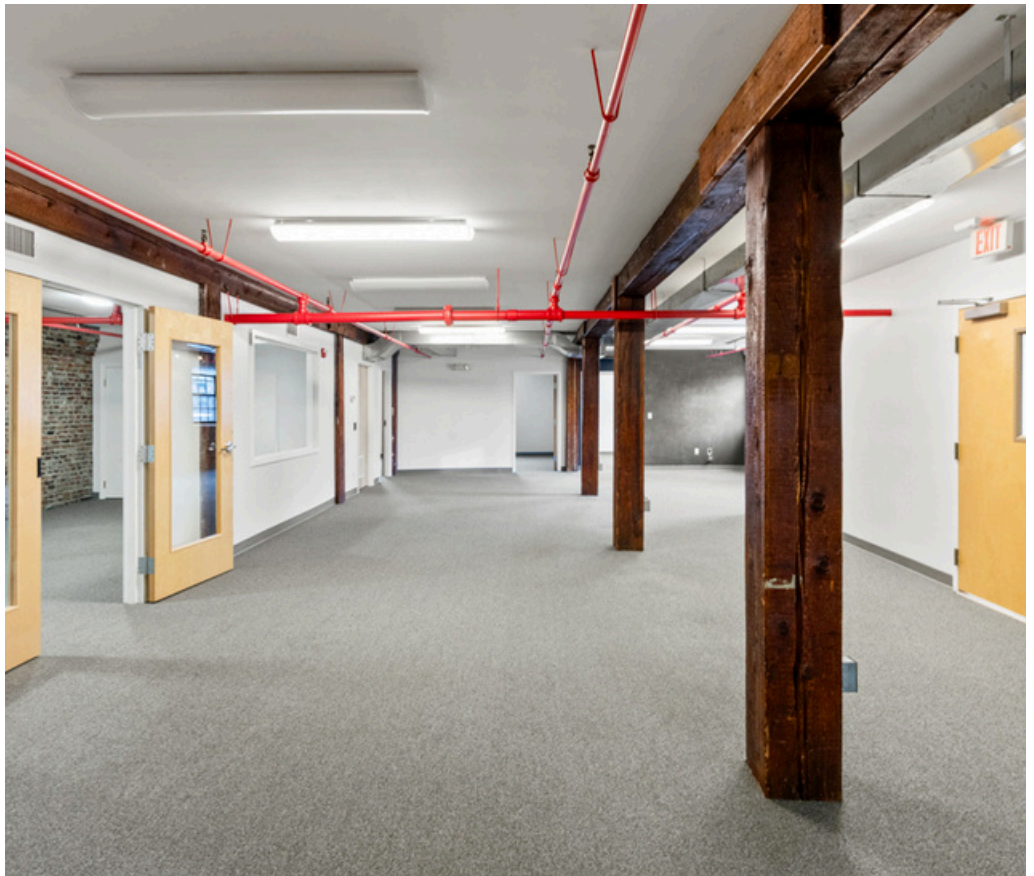
30 Danforth Street | Portland, ME



PORTA
& CO.

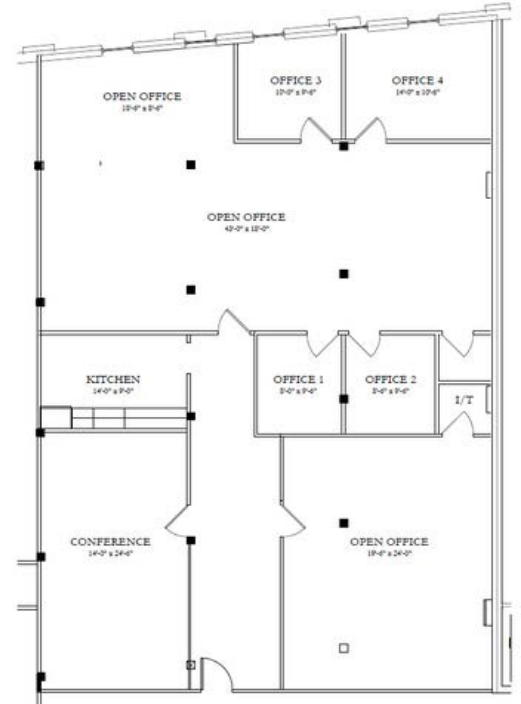
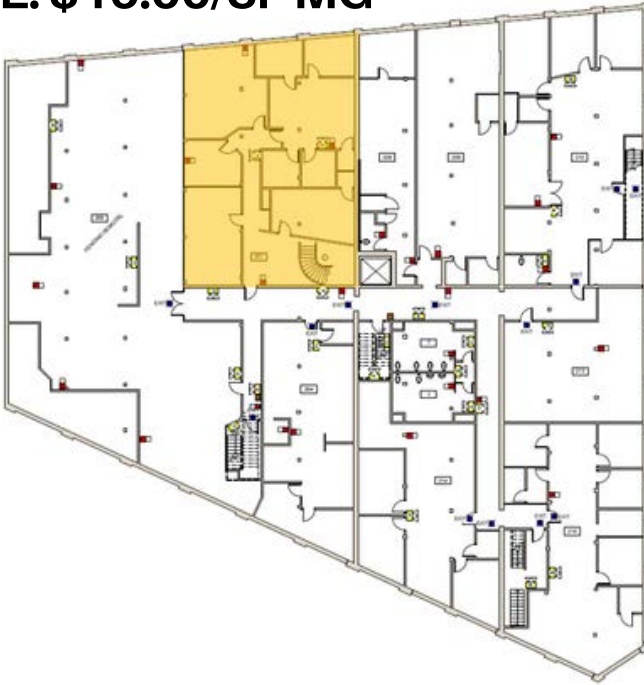
PHOTOS

30 Danforth Street | Portland, ME



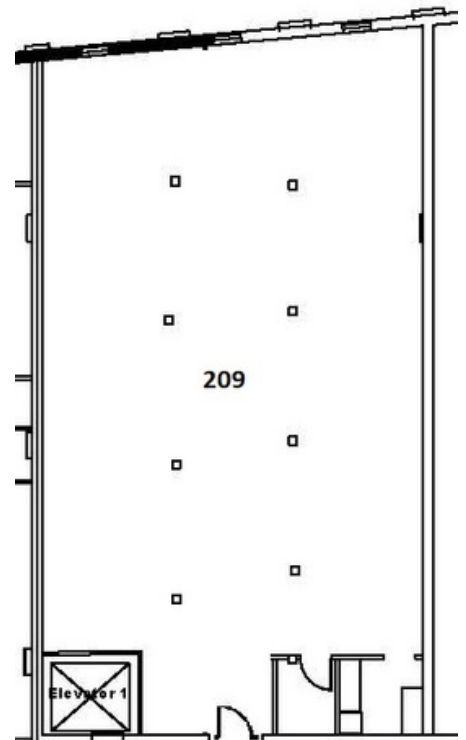
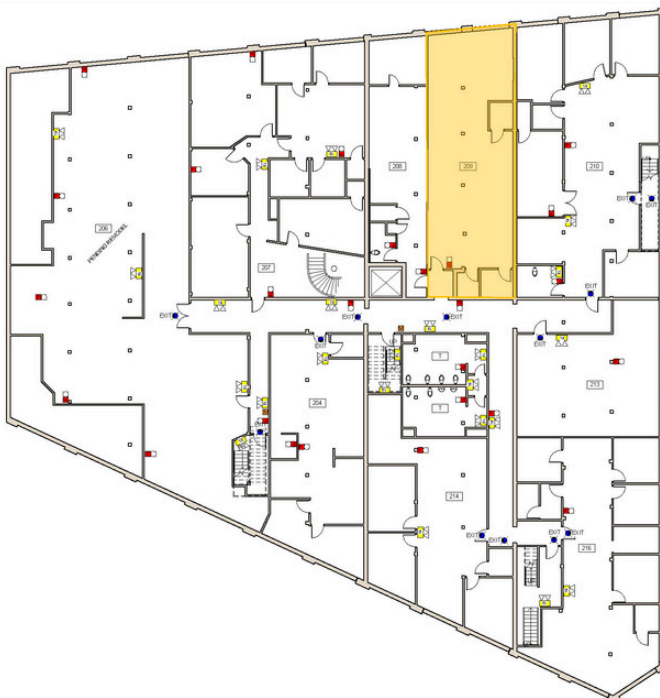
SUITE 207: 3,154± SF

RATE: \$16.00/SF MG



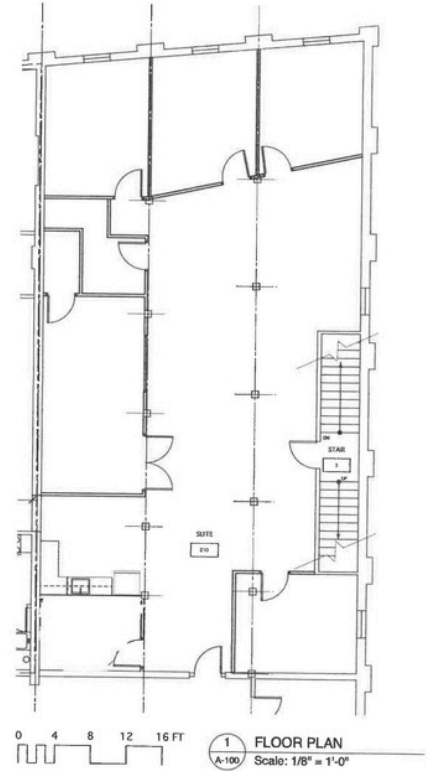
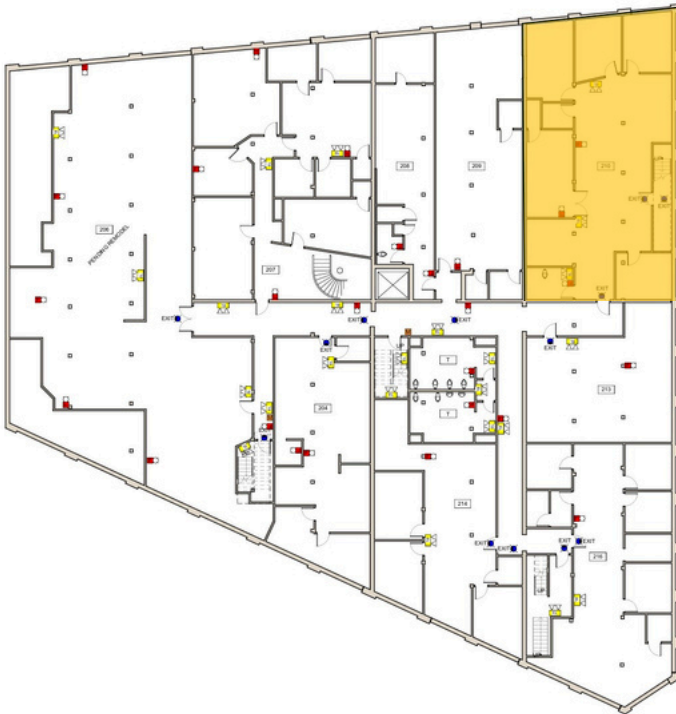
SUITE 209: 2,744± SF

RATE: \$16.00/SF MG



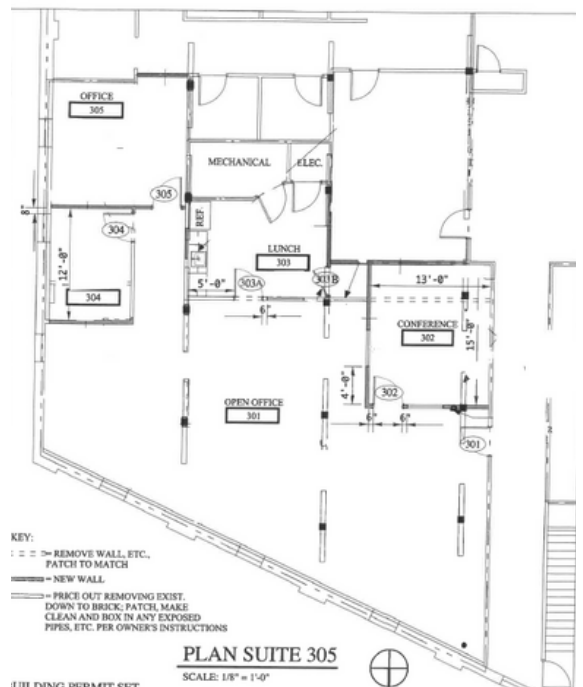
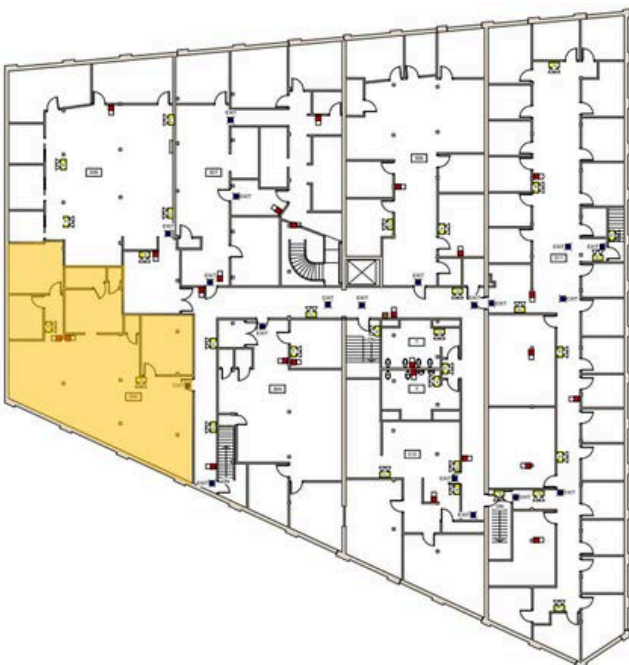
SUITE 210: 2,750± SF

RATE: \$18.00/SF



SUITE 305: 2,350± SF

RATE: \$19.00/SF MG

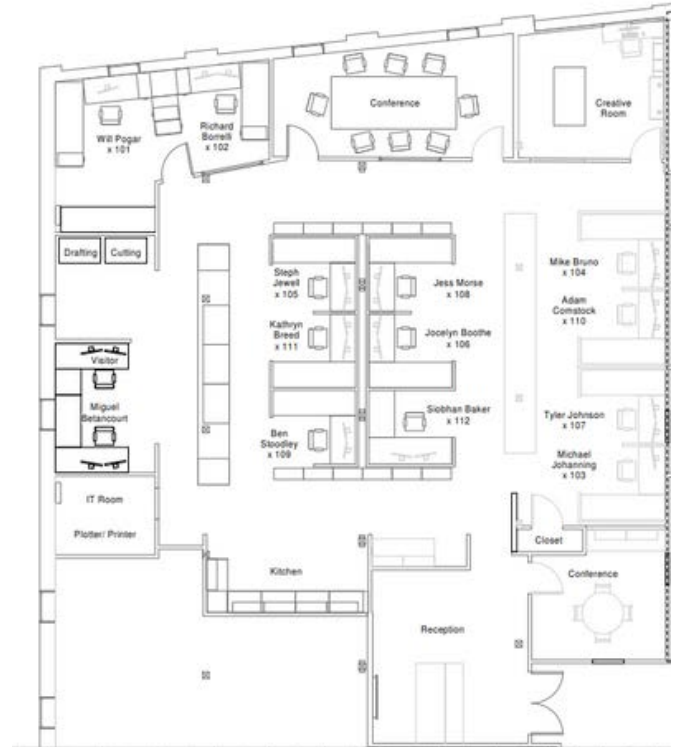
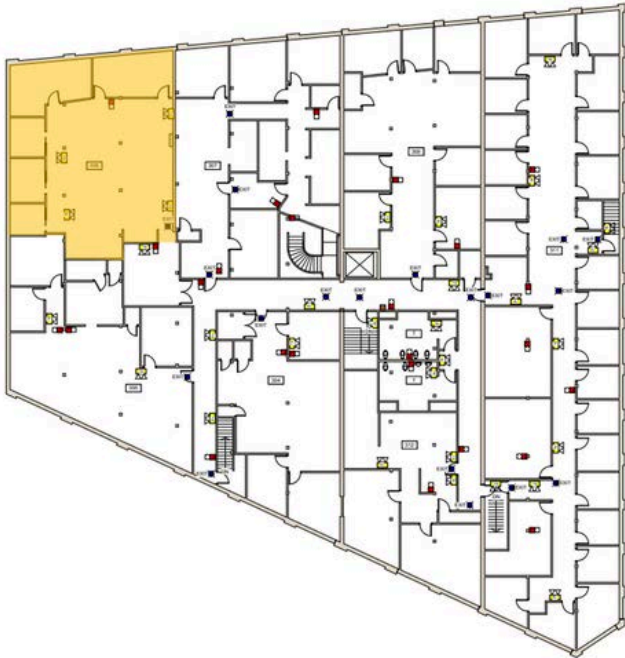


KEY:
 --- REMOVE WALL, ETC., PATCH TO MATCH
 --- NEW WALL
 --- PRICK CUT REMOVING EXIST. DOWN TO BRICK; PATCH, MAKE CLEAN AND BOX IN ANY EXPOSED PIPES, ETC. PER OWNER'S INSTRUCTIONS

BUILDING PERMIT SFT
 PLAN SUITE 305
 SCALE: 1/8" = 1'-0"

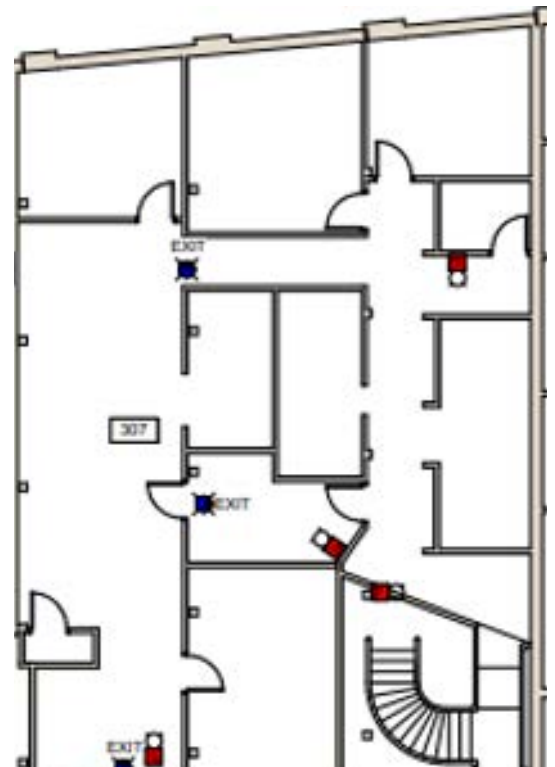
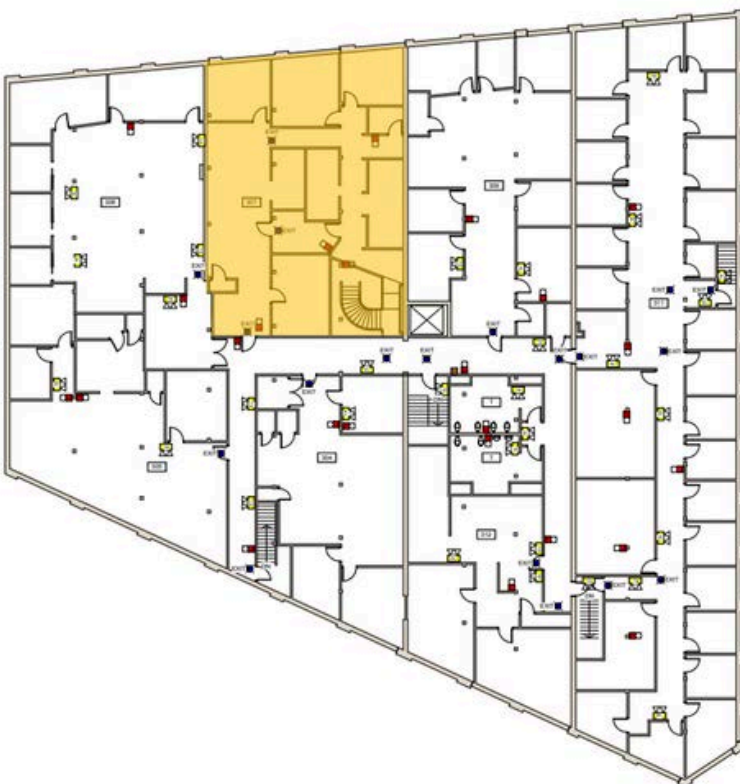
SUITE 306: 3,787± SF

RATE: \$19.00/SF MG



SUITE 307: 2,432± SF

RATE: \$19.00/SF MG





CONTACT US



Peter Gwilym

Partner
c: 207-272-4262
o: 207-747-1515
pgwilym@portacompany.com



Vince Ciampi

Partner
c: 207-756-4563
o: 207-747-1515
vciampi@portacompany.com

This information has been obtained from sources believed reliable and is intended for informational use only. The information contained herein has not been verified for accuracy or completeness. It is recommended that prospective tenants and buyers conduct their own inspection of the property and verify all information. Any reliance on this information is solely at your own risk. Photos herein are the property of their respective owners. Use of these images without the express written consent of the owner is prohibited.