

500 WEST INDUSTRIAL

3618 South 500 West | South Salt Lake, UT 84115



Contact

SKYLER PETERSON, SIOR
Executive Vice President
m 801.656.7354
speterson@legendcommercial.com

TRE BOURDEAUX, SIOR
Vice President
m 801.928.1815
tbourdeaux@legendcommercial.com

PARKER TAGGART
Senior Associate
m 801.928.1815
ptaggart@legendcommercial.com

CONNOR DEBRY
Associate
m 801.557.9119
cdebry@legendcommercial.com



801.930.6750 | www.legendcommercial.com
2180 S 1300 E, Suite 240 | Salt Lake City, UT 84106

500 WEST INDUSTRIAL

3618 South 500 West | South Salt Lake, UT 84115



FOR SUBLEASE

\$1.05 PSF Monthly NNN

Property Highlights

- Total Available: 11,200-15,500 SF
 - Total Office: 2,150 SF
 - Warehouse: 13,350 SF
- Three (3) Automatic Grade Level Doors
 - One (1) 14'x12'
 - Two (2) 10'x10'
- Outside Dock Access at Rear of Warehouse
- Paint Booth: 200 SF
- Kitchen / Break Room
- Clear Height: 16'
- Column Spacing: 29'x33'
- Office HVAC
- Compressed Air Lines
- Electrical Power: 800 Amp | 3-Phase | 4-Wire
- LED Motion Sensor Lighting
- Two (2) Dust Collection Systems
- Air Filtration System
- Temperature-Controlled Warehouse
- Fully Fire-Sprinklered
- Master Lease Expiration: June 30, 2028
- Seventeen (17) Parking Stalls
- Gated Lot
- Access: Excellent access to I-15 and I-215 via 3300 South and 4500 South interchanges. Centrally located in the Salt Lake industrial corridor. Close proximity to Downtown Salt Lake City, Salt Lake International Airport, and major distribution routes

Contact

SKYLER PETERSON, SIOR
Executive Vice President
m 801.656.7354
speterson@legendcommercial.com

TRE BOURDEAUX, SIOR
Vice President
m 801.824.0397
tbourdeaux@legendcommercial.com

PARKER TAGGART
Senior Associate
m 801.928.1815
ptaggart@legendcommercial.com

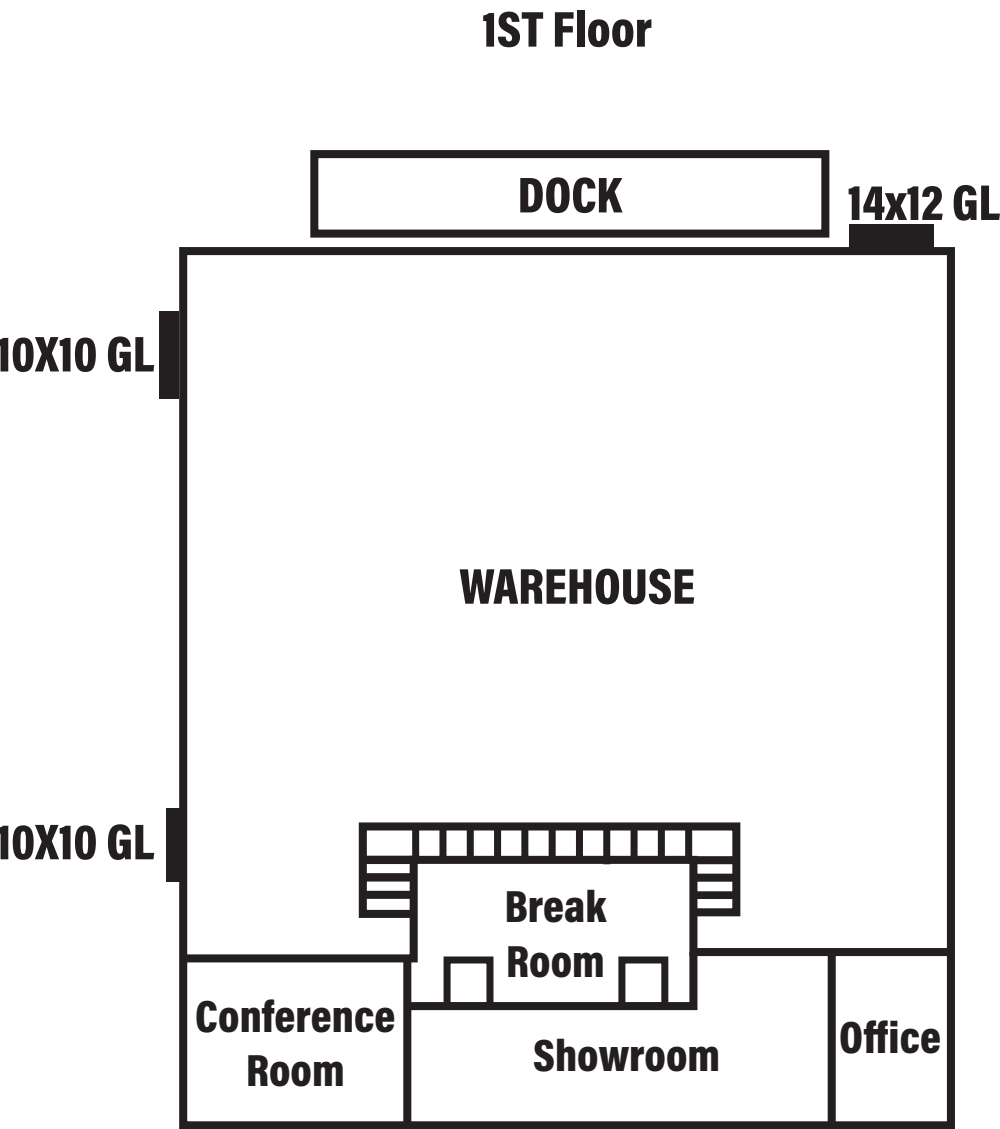
CONNOR DEBRY
Associate
m 801.557.9119
cdebry@legendcommercial.com



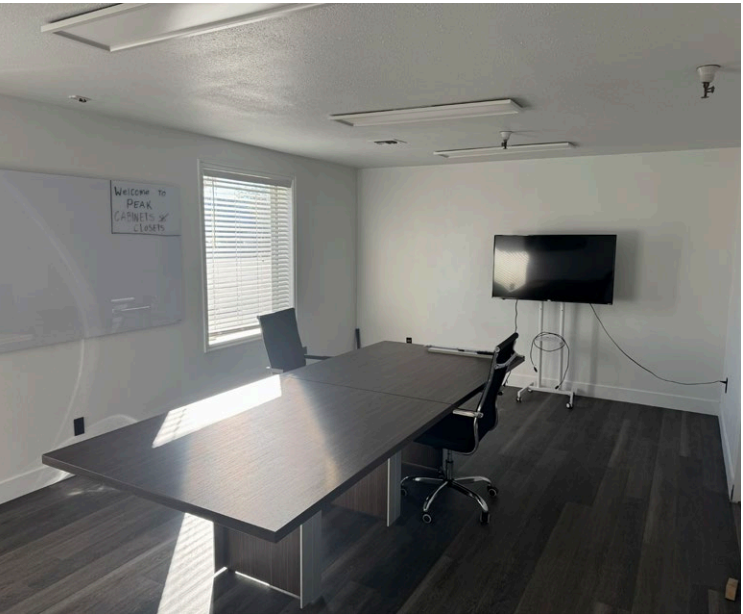
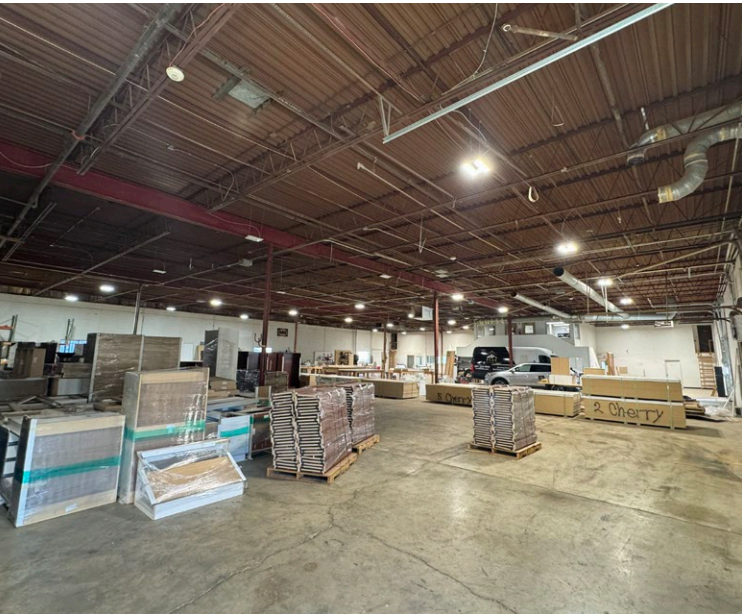
801.930.6750 | www.legendcommercial.com
2180 S 1300 E, Suite 240 | Salt Lake City, UT 84106

500 WEST INDUSTRIAL

3618 South 500 West | South Salt Lake, UT 84115



2ND Floor



Contact

SKYLER PETERSON, SIOR
Executive Vice President
m 801.656.7354
speterson@legendcommercial.com

TRE BOURDEAUX, SIOR
Vice President
m 801.824.0397
tbourdeaux@legendcommercial.com

PARKER TAGGART
Senior Associate
m 801.928.1815
ptaggart@legendcommercial.com

CONNOR DEBRY
Associate
m 801.557.9119
cdebry@legendcommercial.com

**LEGEND
COMMERCIAL**
801.930.6750 | www.legendcommercial.com
2180 S 1300 E, Suite 240 | Salt Lake City, UT 84106

Contact

SKYLER PETERSON, SIOR
Executive Vice President
m 801.656.7354
speterson@legendcommercial.com

TRE BOURDEAUX, SIOR
Vice President
m 801.824.0397
tbourdeaux@legendcommercial.com

PARKER TAGGART
Senior Associate
m 801.928.1815
ptaggart@legendcommercial.com

CONNOR DEBRY
Associate
m 801.557.9119
cdebry@legendcommercial.com

**LEGEND
COMMERCIAL**
801.930.6750 | www.legendcommercial.com
2180 S 1300 E, Suite 240 | Salt Lake City, UT 84106