

# 30 POWERHOUSE STREET

TORONTO, ON



# PROPERTY DETAILS

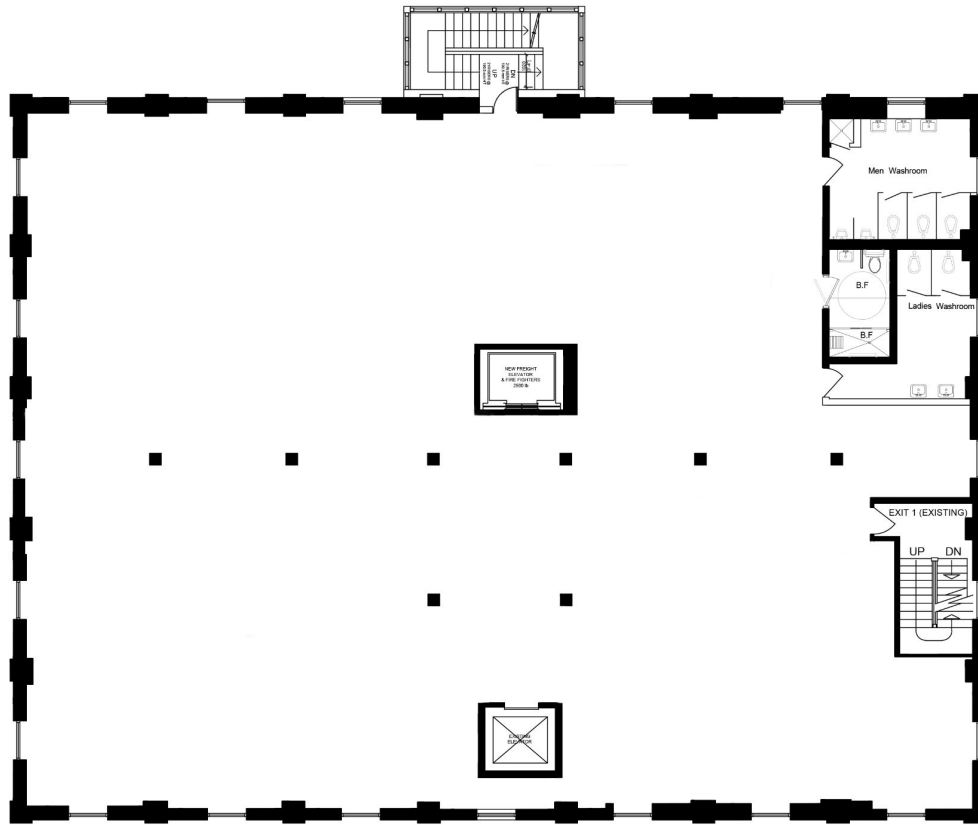
LOCATION	On Powerhouse St, off Foundry Ave and Davenport Rd. <a href="#">Click here for map.</a>
BUILDING DETAILS	
SECOND FLOOR	Unit 2B - 1100 SF Unit 2C - 1200 SF
THIRD FLOOR	Unit 1 - 2,944 SF Unit 2 - 2,286 SF Unit 3 - 1,214 SF
FOURTH FLOOR	7,650 SF - Full Floor
RENTAL RATE	\$45.00 PSF Semi-Gross
TERM	3 to 10 Years
POSSESSION	Q3 2024

## FEATURES

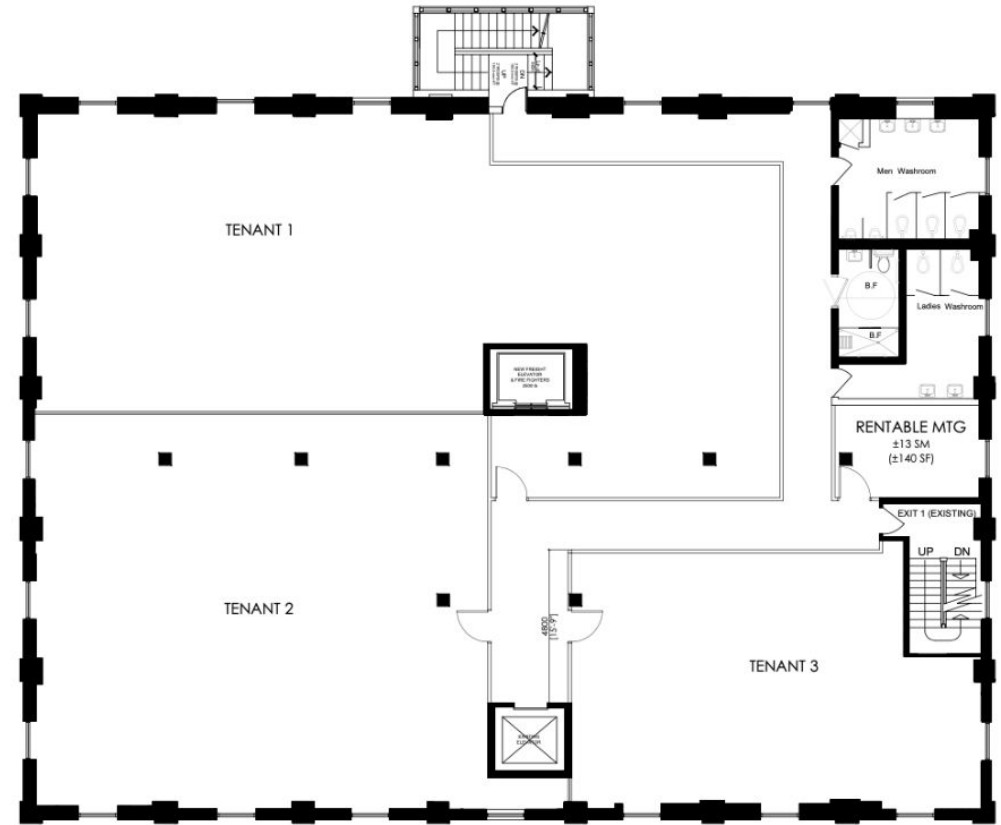
- 7,650 SF floor plates and 13' ceilings
- Easy stair access & new elevator servicing all floors
- 5 climate control zones per floor
- Underground parking with bicycle storage (1 per 1,000 SF)
- Building signage available
- Wheelchair accessible

# FLOOR PLANS: 2ND FLOOR OPTIONS

## STANDARD FLOOR PLAN FOR FLOORS 2-4

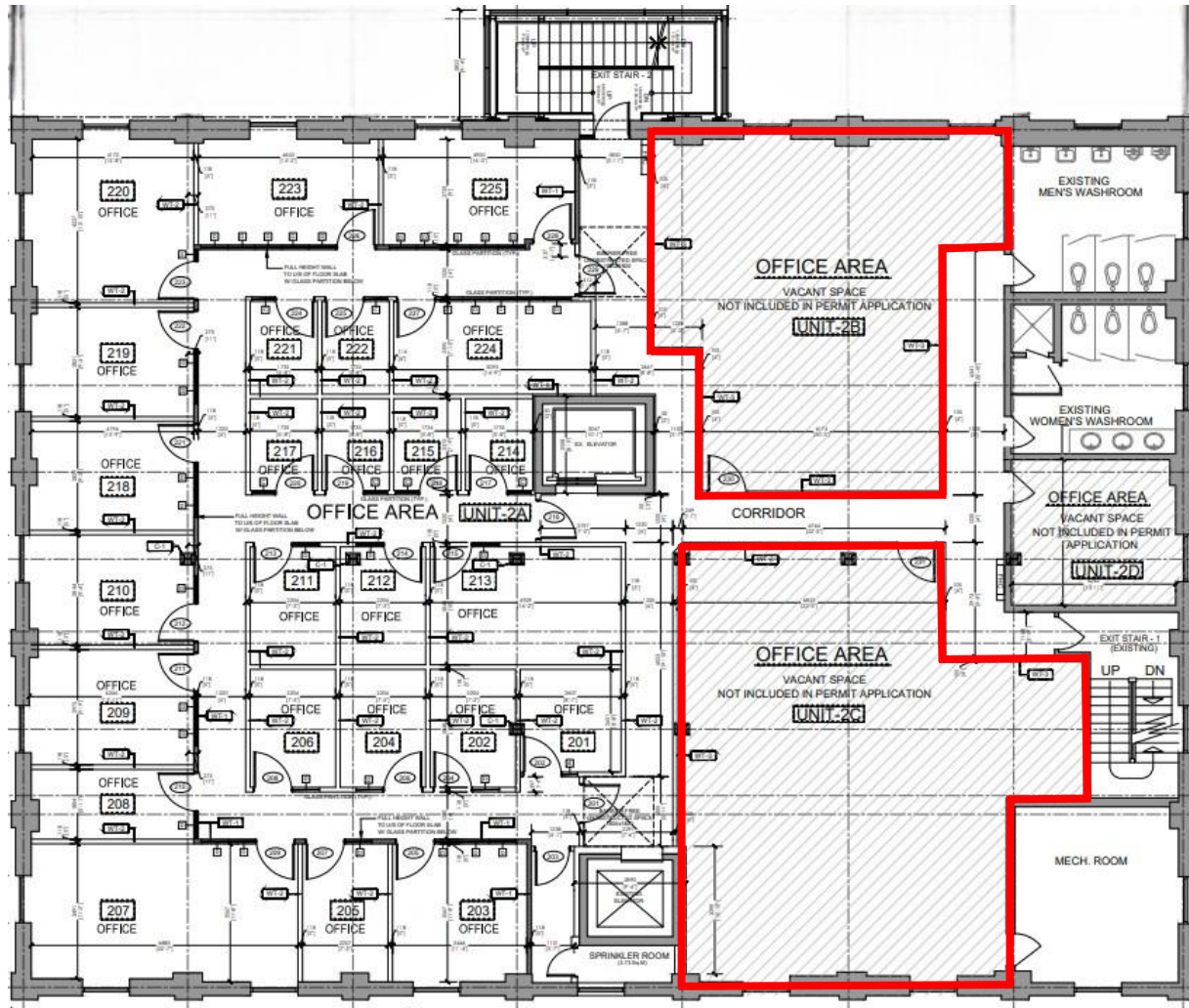


## PROPOSED DIVISION 2ND FLOOR





# FLOOR PLANS: 2ND FLOOR



# INTERIOR PHOTOS

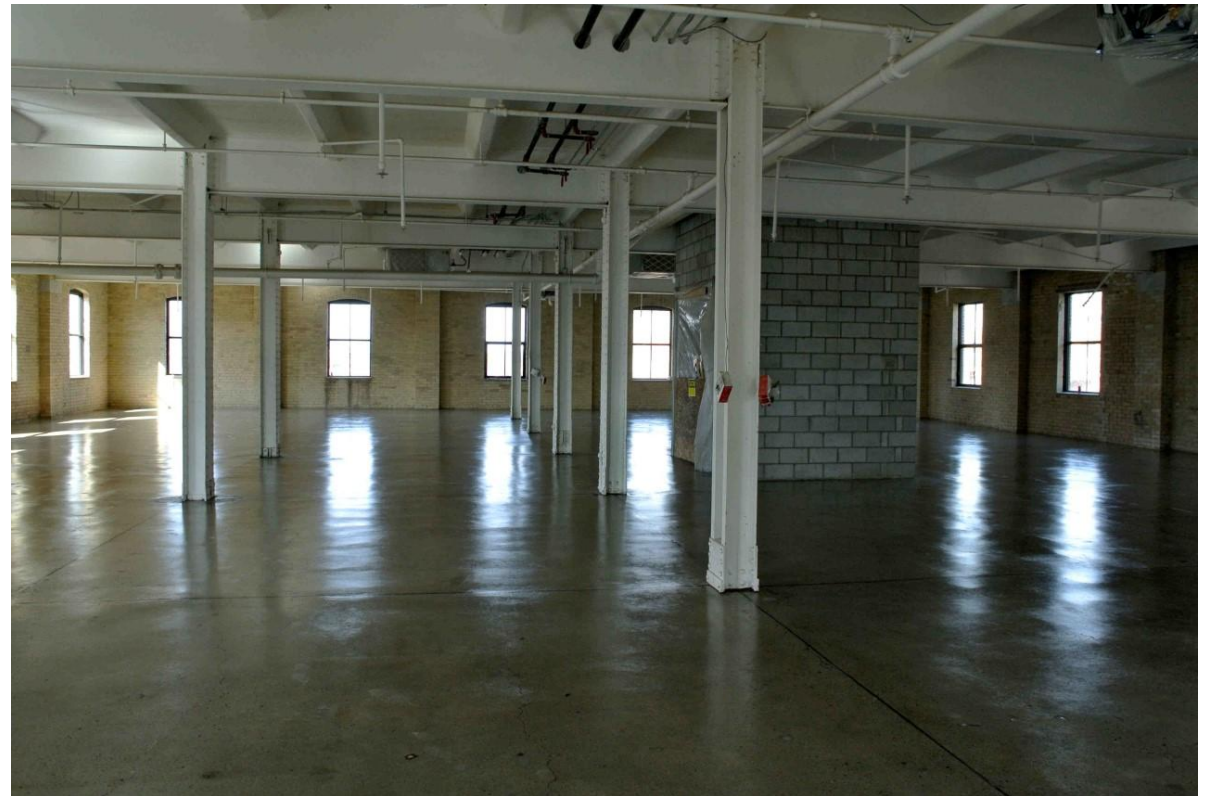
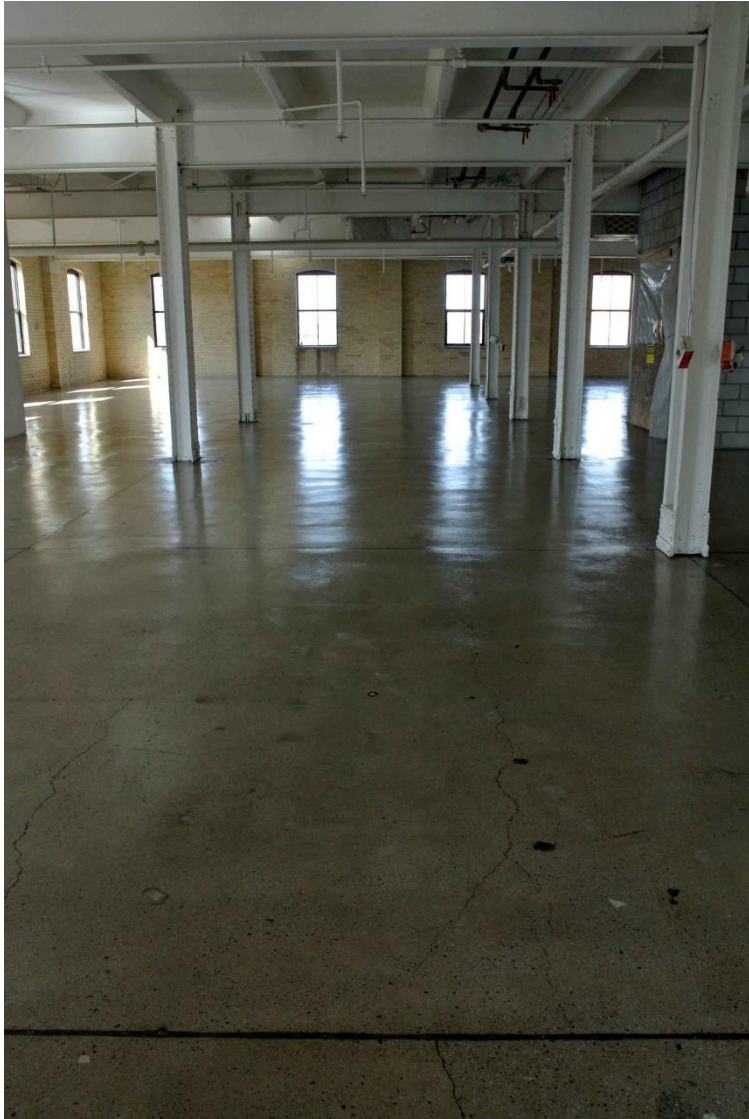
---

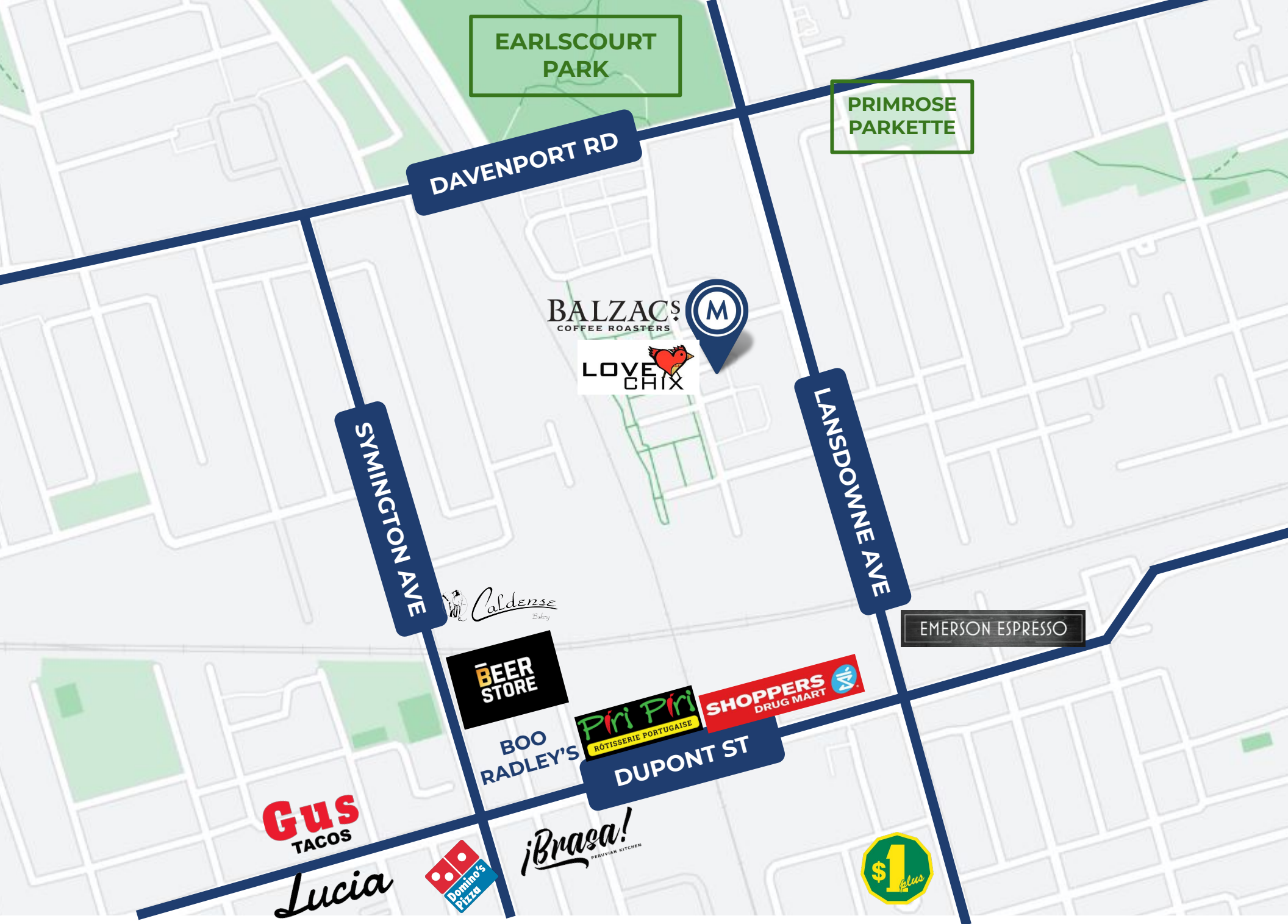




# INTERIOR PHOTOS

---









METROPOLITAN  
COMMERCIAL

# 30 POWERHOUSE STREET

## TORONTO, ON

**TIM NOVAK**

Senior Vice President  
Sales Representative

M. 416.889.7100

W. 416.703.6621 ext. 246

[tim.novak@metcomrealty.com](mailto:tim.novak@metcomrealty.com)

150 BEVERLEY STREET, UNIT 1

TORONTO, ON | M5T 1Y5

416.703.6621

[WWW.METCOMREALTY.COM](http://WWW.METCOMREALTY.COM)

The information contained herein has been gathered from sources deemed reliable. However, Metropolitan Commercial Realty Inc., Brokerage, its agents, or employees make no representations or warranties on the accuracy of said information. Prospective tenants and their agents are advised to independently verify any information provided herein.

Metropolitan Commercial Realty Inc., Brokerage