

AVAILABLE FOR SALE  
PROFESSIONAL OFFICE SPACE

2930-3010 N. FRESNO STREET  
FRESNO, CA

**NEWMARK**  
PEARSON COMMERCIAL

**Phil Souza**  
Senior Vice President - Office Division  
t 559-447-6283  
psouza@pearsonrealty.com  
CA RE Lic. #00853867

**Nick Sorensen**  
Vice President - Office Division  
t 559-447-6240  
nsorensen@pearsonrealty.com  
CA RE Lic. #02081137

*Independently Owned and Operated* | Corporate License #00020875 | [newmarkpearson.com](http://newmarkpearson.com)

**FRESNO OFFICE:** 7480 N. Palm Ave. #101, Fresno, CA 93711, t 559-432-6200 | **VISALIA OFFICE:** 3447 S. Demaree St., Visalia, CA 93277, t 559-732-7300

The distributor of this communication is performing acts for which a real estate license is required. The information contained herein has been obtained from sources deemed reliable but has not been verified and no guarantee, warranty or representation, either express or implied, is made with respect to such information. Terms of sale or lease and availability are subject to change or withdrawal without notice.

---

<b>Availability:</b>	2936 N. Fresno Street   780± SF
<b>Lease Rate:</b>	\$1.00, Modified Gross
<b>Parking Description:</b>	Surface   4:1 Ratio
<b>Zoning:</b>	C-P
<b>Highlight:</b>	All new flooring and lighting

---

#### **PROPERTY DESCRIPTION**

This garden style office houses both medical and general office-use tenants. Great visibility on N. Fresno Street. All new flooring and lighting.

This complex is completely gated with a bus stop.

---

#### **LOCATION DESCRIPTION**

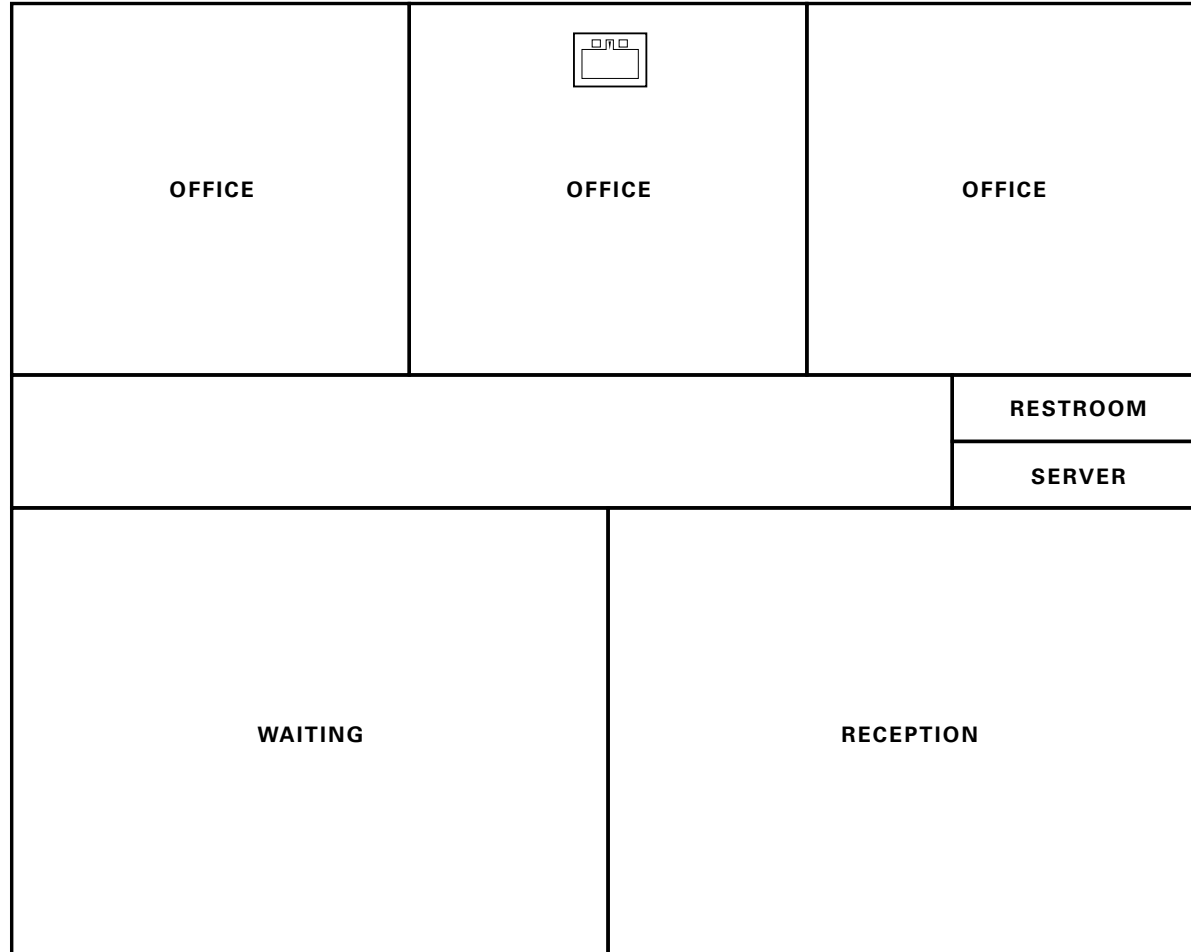
Located on the northeast corner of N. Fresno Street and E. Michigan Avenue in Fresno, California

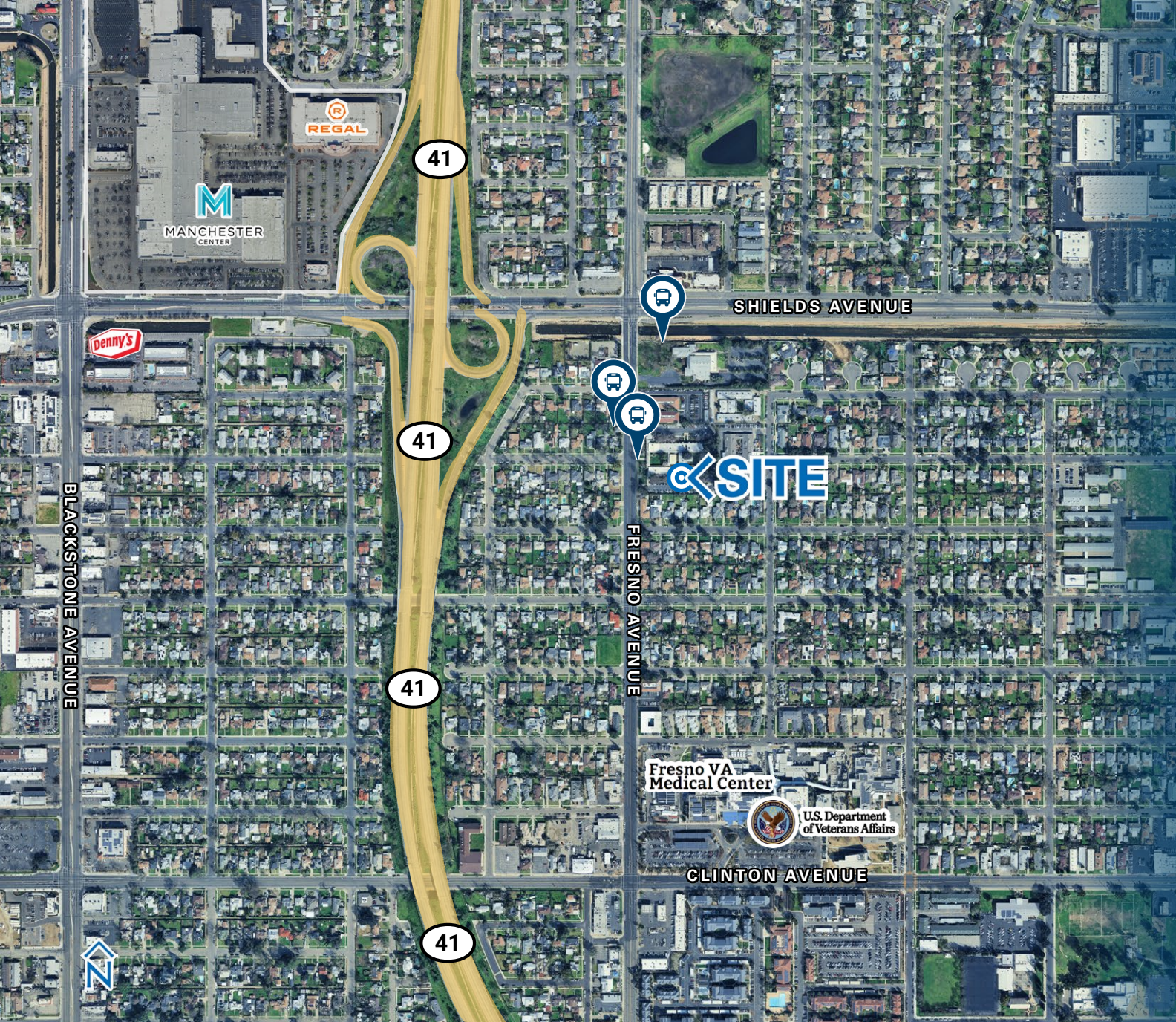
---

#### **HIGHLIGHTS**

- Dentist
- Doctors
- LabCorp
- American Ambulance
- Therapy Group







*For information, please contact:*

**Phil Souza**

*Senior Vice President - Office Division*

t 559-447-6283

psouza@pearsonrealty.com

CA RE Lic. #00853867

**Nick Sorensen**

*Vice President - Office Division*

t 559-447-6240

nsorensen@pearsonrealty.com

CA RE Lic. #02081137

**NEWMARK**  
PEARSON COMMERCIAL

*Independently Owned and Operated*  
Corporate License #00020875  
newmarkpearson.com

**FRESNO OFFICE**  
7480 N. Palm Ave. #101  
Fresno, CA 93711  
t 559-432-6200

**VISALIA OFFICE**  
3447 S. Demaree St.  
Visalia, CA 93277  
t 559-732-7300

The distributor of this communication is performing acts for which a real estate license is required. The information contained herein has been obtained from sources deemed reliable but has not been verified and no guarantee, warranty or representation, either express or implied, is made with respect to such information. Terms of sale or lease and availability are subject to change or withdrawal without notice.