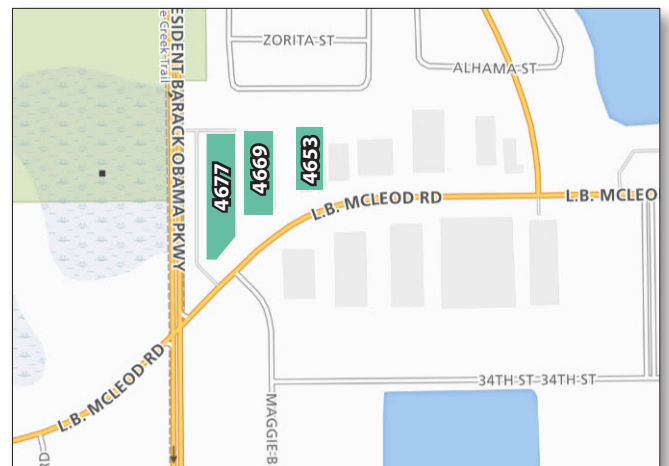




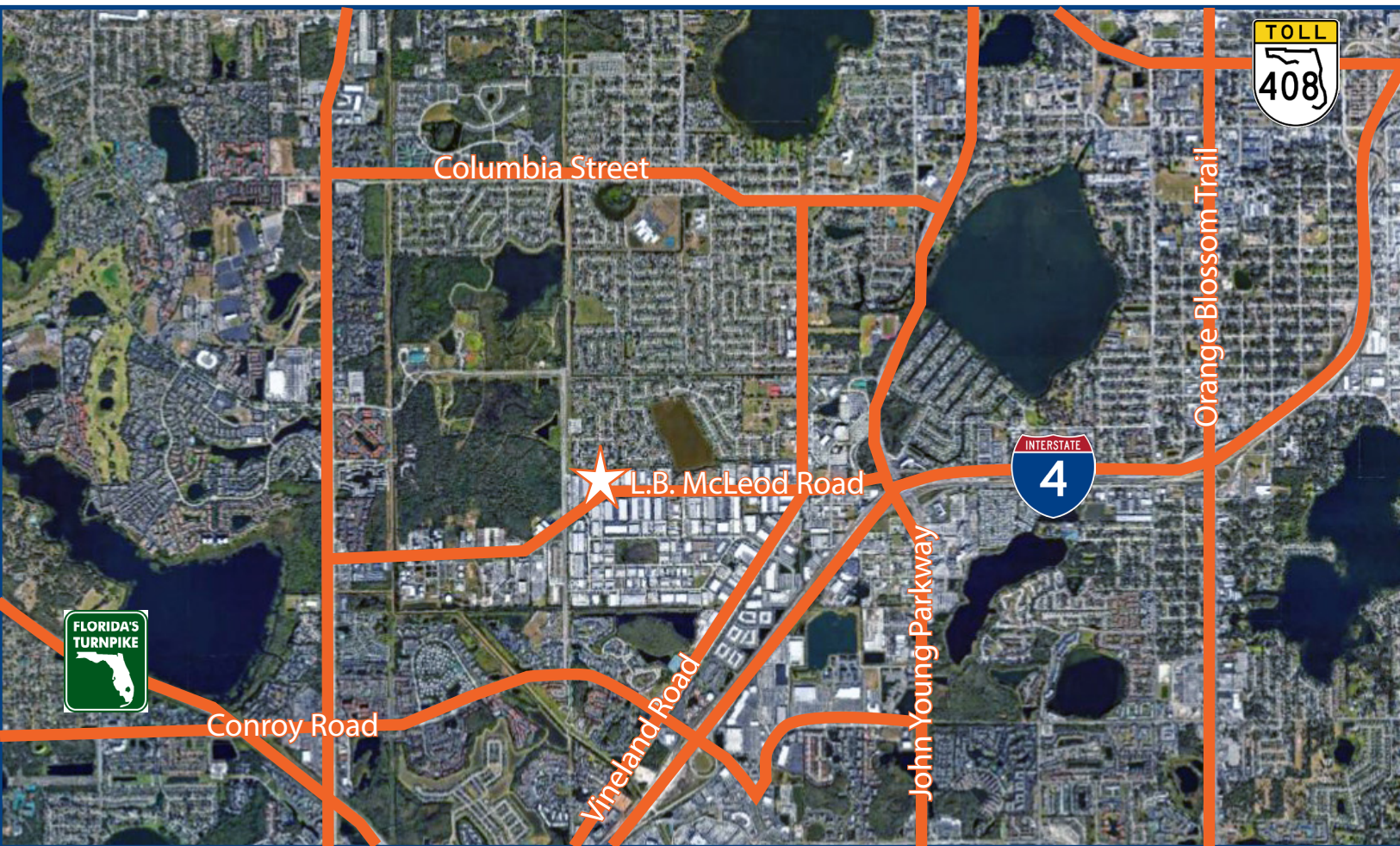
Triplex

Triplex is an excellent office / warehouse distribution location in close proximity to Interstate-4, Kirkman Road, John Young Parkway, International Drive and the Florida Turnpike. The tourist corridor is nearby, including amenities like the Millenia Mall and Universal Studios.



Lisa Bailey, SIOR, Principal
D 407 440 6645
C 407 595 9233
lisa.bailey@avisonyoung.com

135 W Central Blvd
Suite 700
Orlando, FL 32801



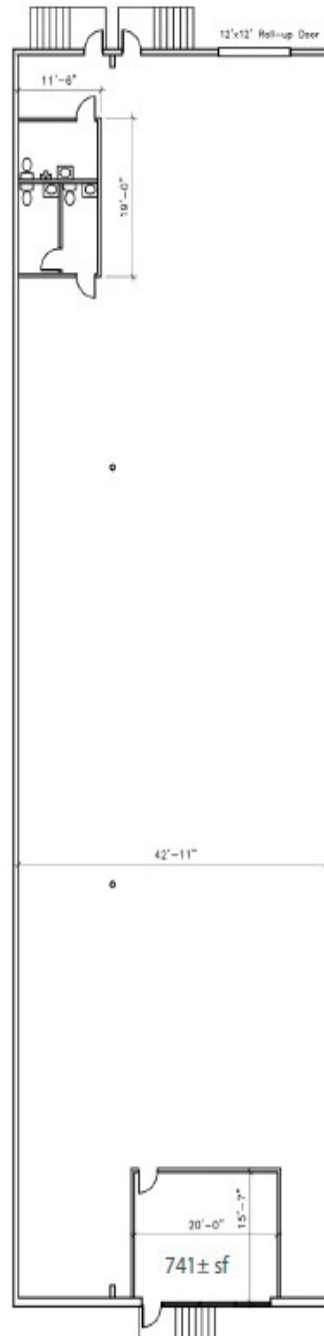
PROPERTY HIGHLIGHTS

- Three office / warehouse buildings totaling 212,815± RSF
- 20' clear height
- 30' X 50' column spacing
- 150' depth
- Dock-high loading
- Concrete block and metal construction
- Parking ratio: 2/1,000 sf
- Excellent distribution location in close proximity to Interstate-4, Kirkman Road, John Young Parkway, International Drive and the Florida Turnpike

Lisa Bailey, SIOR, Principal
D 407 440 6645
C 407 595 9233
lisa.bailey@avisonyoung.com

135 W Central Blvd
Suite 700
Orlando, FL 32801

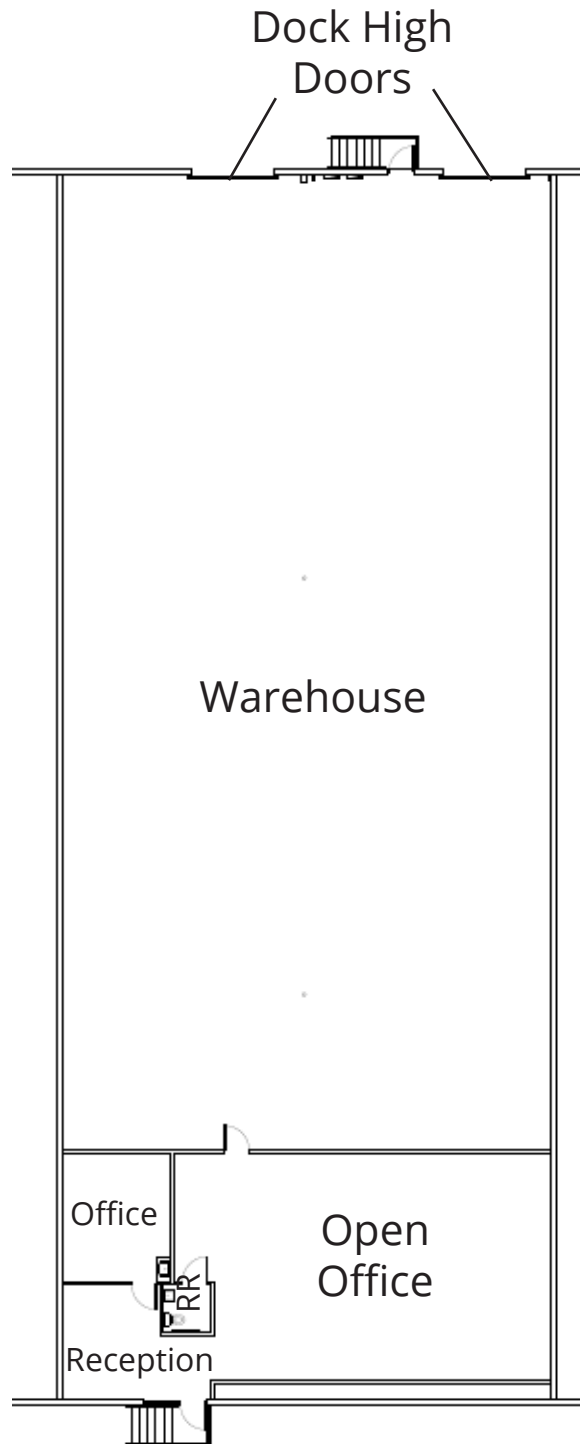
4669 - Suite G
6,537± sf
Office/Warehouse



Lisa Bailey, SIOR, Principal
D 407 440 6645
C 407 595 9233
lisa.bailey@avisonyoung.com

135 W Central Blvd
Suite 700
Orlando, FL 32801

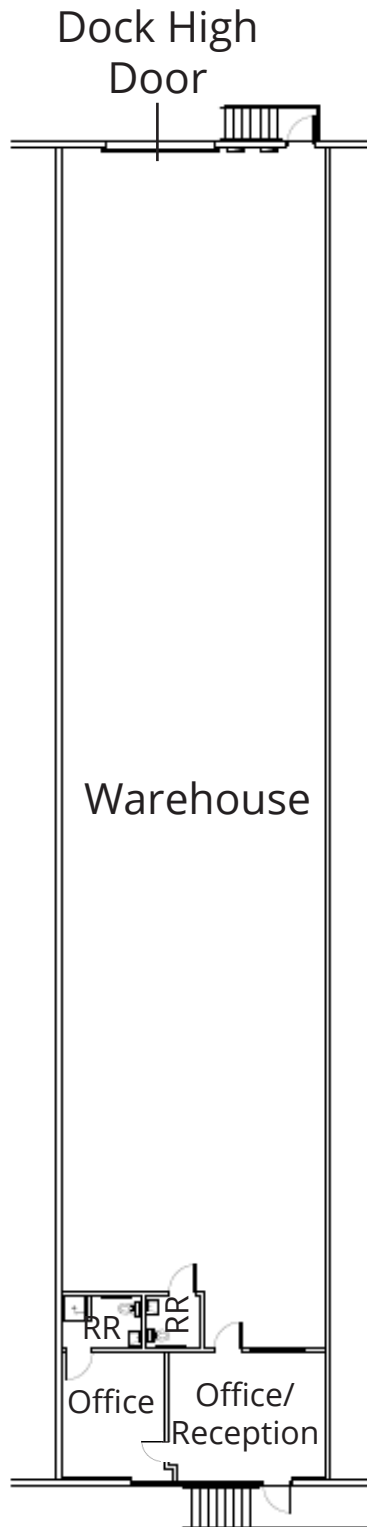
4669 - Suite D
9,000± sf
Office/Warehouse



Lisa Bailey, SIOR, Principal
D 407 440 6645
C 407 595 9233
lisa.bailey@avisonyoung.com

135 W Central Blvd
Suite 700
Orlando, FL 32801

4669 - Suite F
4,500± sf
Office/Warehouse



Lisa Bailey, SIOR, Principal
D 407 440 6645
C 407 595 9233
lisa.bailey@avisonyoung.com

135 W Central Blvd
Suite 700
Orlando, FL 32801