

FOR LEASE



28717 GRUMMAN DRIVE - EUGENE, OREGON

AIRPLANE HANGARS AND OFFICE BUILDING

- PREMIER LOCATION AT MAHLON SWEET AIRPORT
- OFFICE - 6,100 SF
- HANGAR #1 - 6,400 SF WITH 168 SF OFFICE
- HANGAR #2 - 3,000 SF WITH 240 SF OFFICE

Lease Rates: Office: \$1.00/SF/NNN

Hangar #1: \$5,000/Month/NNN | Hangar #2: \$3,500/Month/NNN

For more information contact:



www.campbellre.com

PAUL REDHEAD | paulr@campbellre.com
541- 484-2214 (office) 541- 954-1937 (cell)

Licensed in the State of Oregon

BILL NEWLAND | bill@campbellre.com
541- 484-2214 (office) 541- 505-0547 (cell)

Licensed in the State of Oregon

The information in this package was obtained from sources deemed reliable, and is not guaranteed by agent. Package is subject to change, error or omission, prior sale or lease, correction or withdrawal. Any party contemplating purchase is urged to conduct their own independent study and inspection.

OFFICE BUILDING HIGHLIGHTS

- 6,100 Square Feet
- Reception, Multiple Private Offices, Conference Room, Open-Work Areas, Storage, Break Room And Restrooms
- Lease Rate: \$1.00/SF, NNN



28717 GRUMMAN DRIVE

HANGAR #1

- 6,400 Square Feet
- 168 SF Office
- Storage Area & Restroom
- Bay Door: 36' X 80'
- Lease Rate: \$5,000/Month/NNN

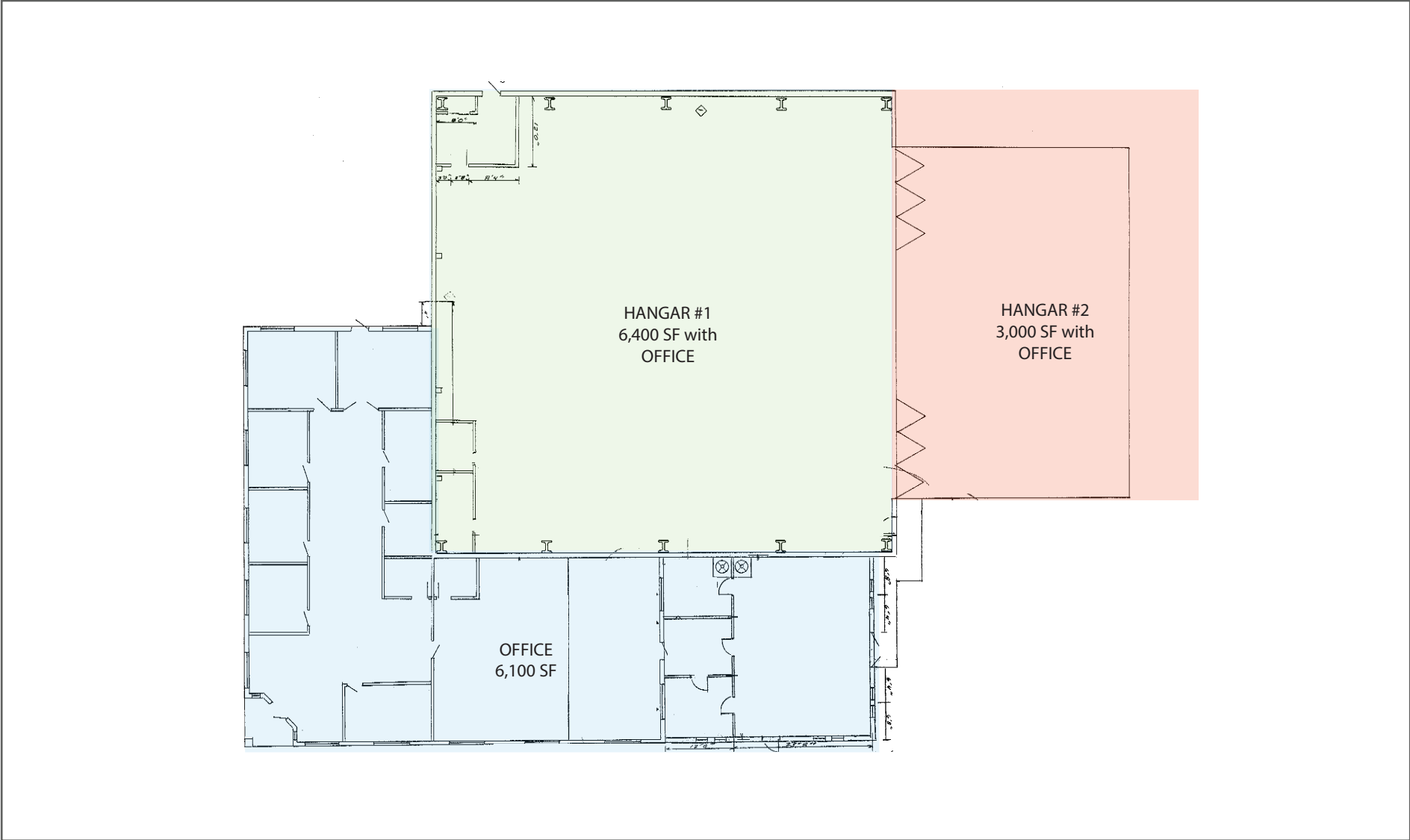


HANGAR #2

- 3,000 Square Feet
- 240 SF Office
- Bay Door: 15' X 53'
- Lease Rate: \$3,500/Month/NNN



BUILDING FLOOR PLAN



The information in this package was obtained from sources deemed reliable, and is not guaranteed by agent. Package is subject to change, error or omission, prior sale or lease, correction or withdrawal. Any party contemplating purchase is urged to conduct their own independent study and inspection.

28717 GRUMMAN DRIVE

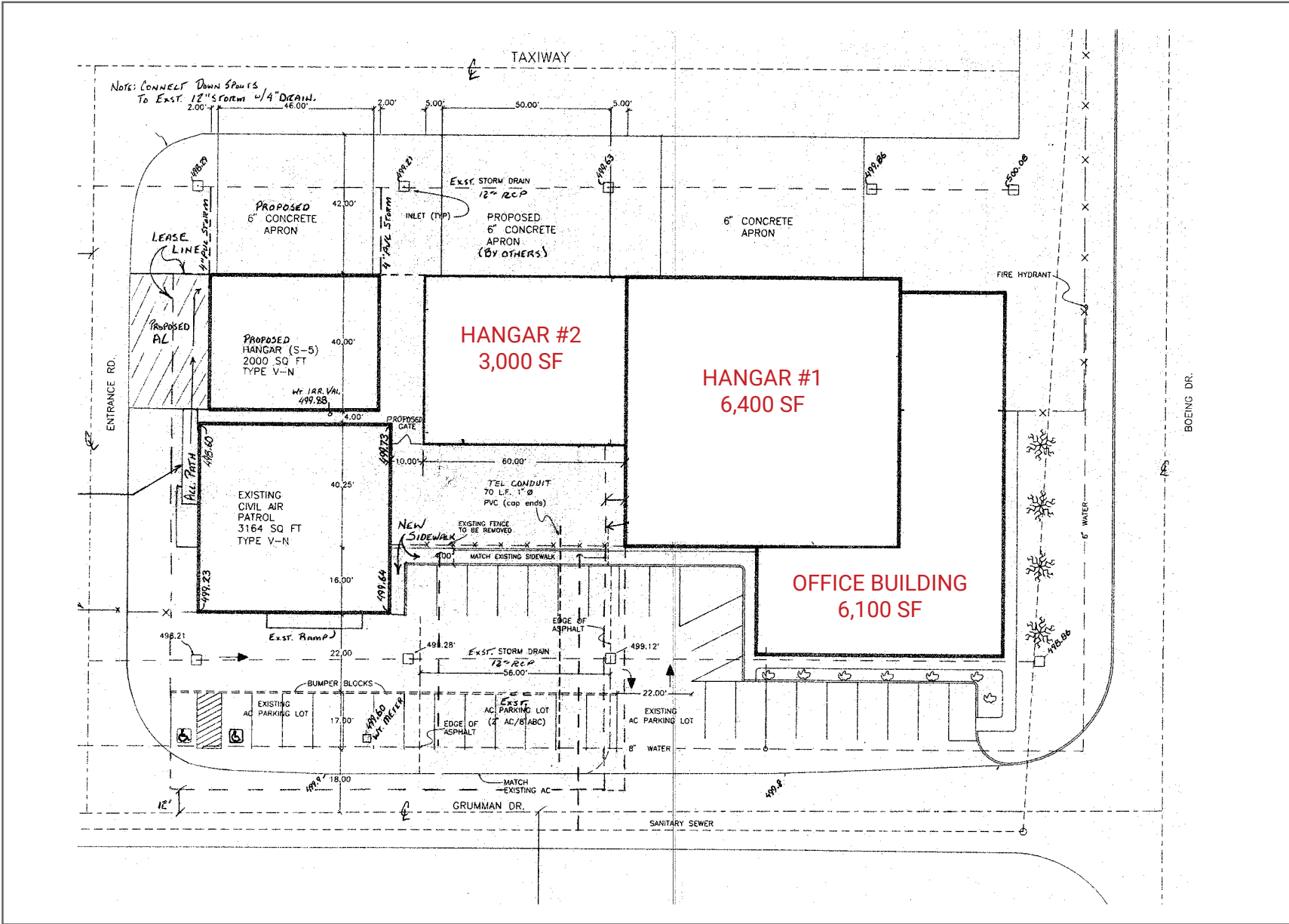


The information in this package was obtained from sources deemed reliable, and is not guaranteed by agent. Package is subject to change, error or omission, prior sale or lease, correction or withdrawal. Any party contemplating purchase is urged to conduct their own independent study and inspection.

28717 GRUMMAN DRIVE



PROPERTY SITE PLAN

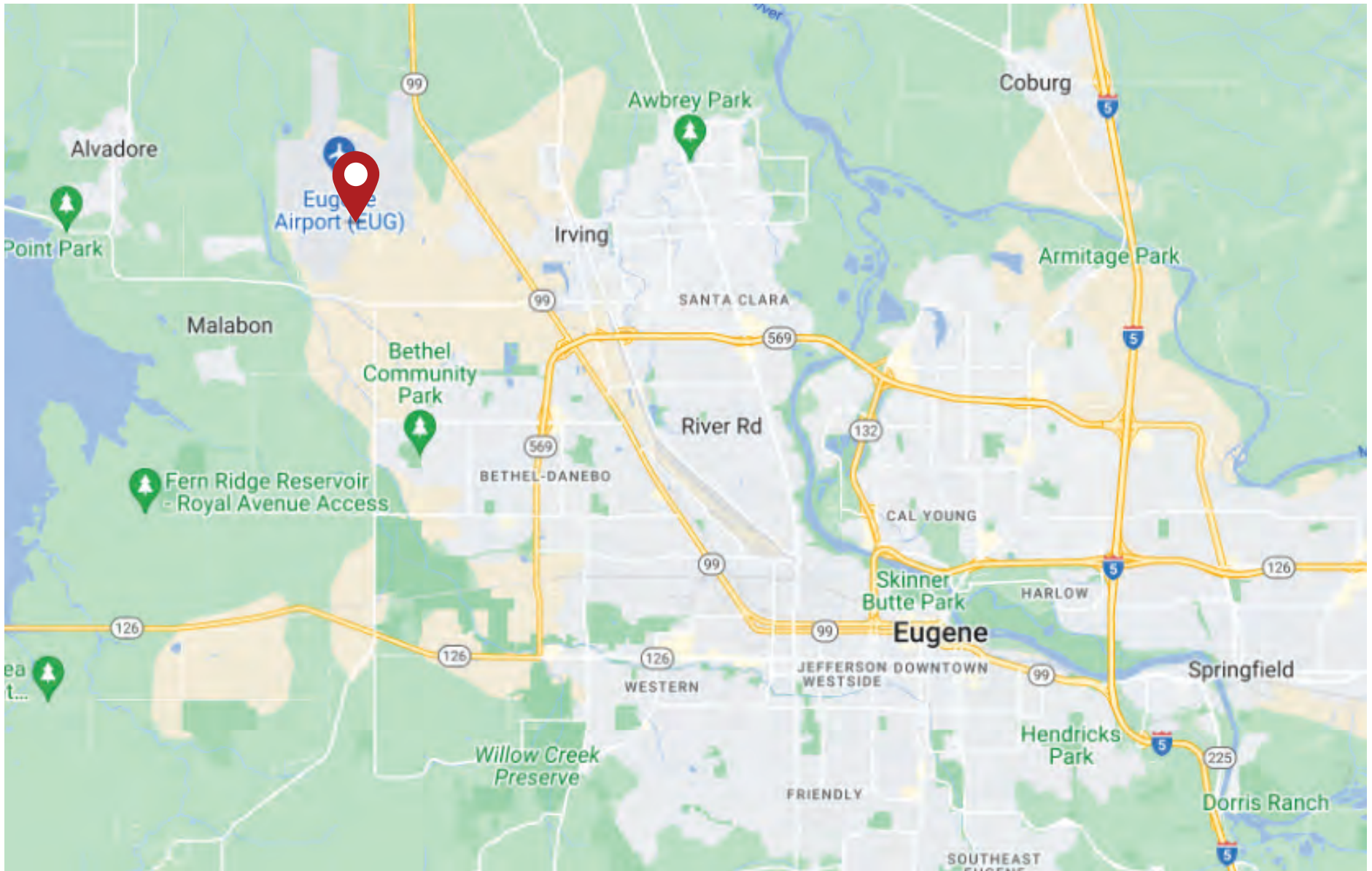


28717 GRUMMAN DRIVE



The information in this package was obtained from sources deemed reliable, and is not guaranteed by agent. Package is subject to change, error or omission, prior sale or lease, correction or withdrawal. Any party contemplating purchase is urged to conduct their own independent study and inspection.

PROPERTY LOCATION MAP



The information in this package was obtained from sources deemed reliable, and is not guaranteed by agent. Package is subject to change, error or omission, prior sale or lease, correction or withdrawal. Any party contemplating purchase is urged to conduct their own independent study and inspection.