



**17440**  
**DALLAS PARKWAY**  
**DALLAS, TX 75287**

## **LEASING INFORMATION**

**KOLBY DICKERSON**  
**KDICKERSON@TXREPROPERTIES.COM**  
**214-534-1599**

**GRANT GOMEZ**  
**GRANT@TXREPROPERTIES.COM**  
**214-734-4725**

**17440**  
DALLAS PARKWAY



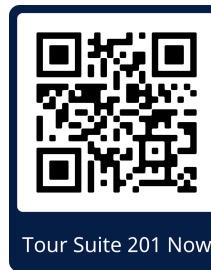
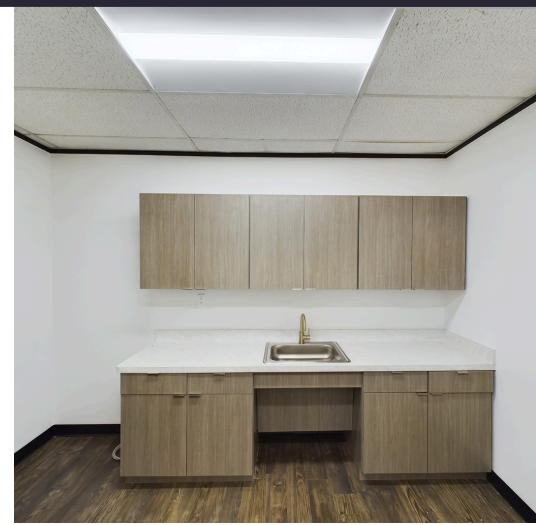
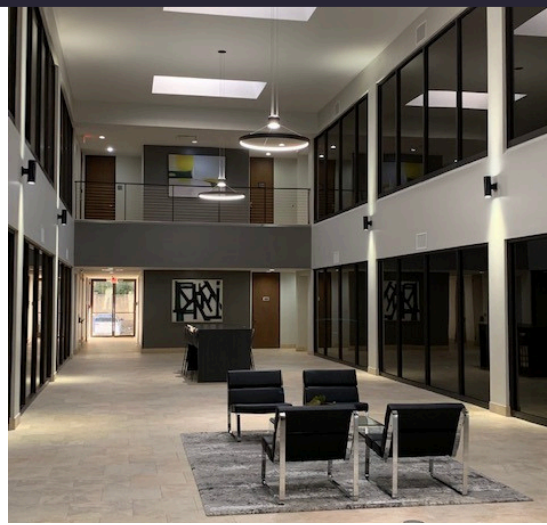
## **PROPERTY HIGHLIGHTS**

- **Monument & Building Signage Available**
- **Surface Parking and Reserved Covered Parking Available**
- **Updated interior with modern look and feel**
- **Move-in Ready Spec Suites**
- **Local Ownership and Property Management Team**



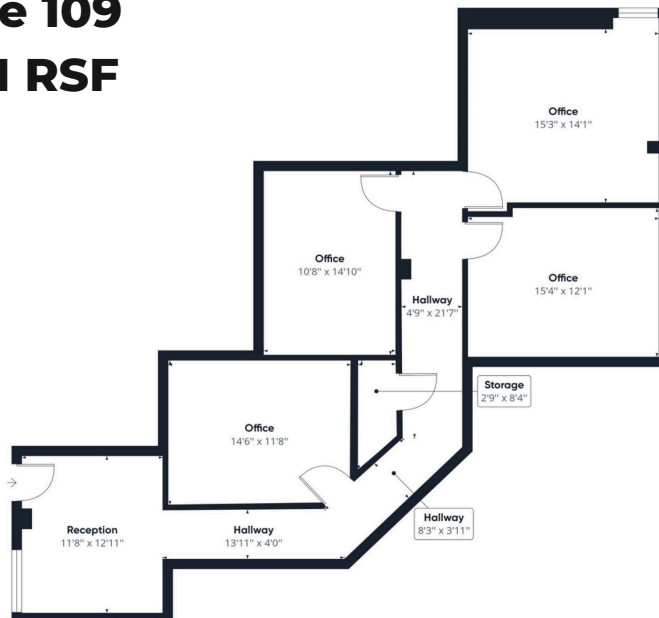
## **LOCATION**

- **Located directly off Dallas North Tollway**
- **Easy access to George Bush Tollway**
- **Local restaurants, retail, grocery, and banking are located within minutes**



**Spec Suite 201**  
**1,136 RSF**

**Suite 109**  
**1,251 RSF**



**Suite 202**  
**1,313 RSF**

**LEASING INFORMATION**

**Kolby Dickerson**  
kdickerson@txreproperties.com  
214-534-1599

**Grant Gomez**  
grant@txreproperties.com  
214-734-4725

