

WEBSITE
CLICK HERE!



TOX COMMERCIAL
REAL ESTATE

LOT 2
0.548 ACRES

LOT 3
2 ACRES

LOT 4
0.987 ACRES



MILLWORX COMMERCIAL LOTS | FOR SALE

Post Falls | Idaho



CONTACT

DANNY DAVIS
208.691.6003
danny@tokcommercial.com



HIGHLIGHTS

- Shovel ready commercial lots.
- Designated as "Downtown Post Falls."
- Located inside a federally approved Opportunity Zone.
- Future infrastructure projects include new on/off ramps off I-90, and new intersection at Seltice and 4th.
- Surrounded by 600+ existing housing units built in the last 5 years, with hundreds more in the pipeline.
- Adjacent to a brand new 151-unit Hyatt Hotel.

DETAILS

LOT	SIZE	PRICE
2	0.548 AC	\$358,000
3	2 AC	\$1,488,445
4	0.99 AC	\$650,000

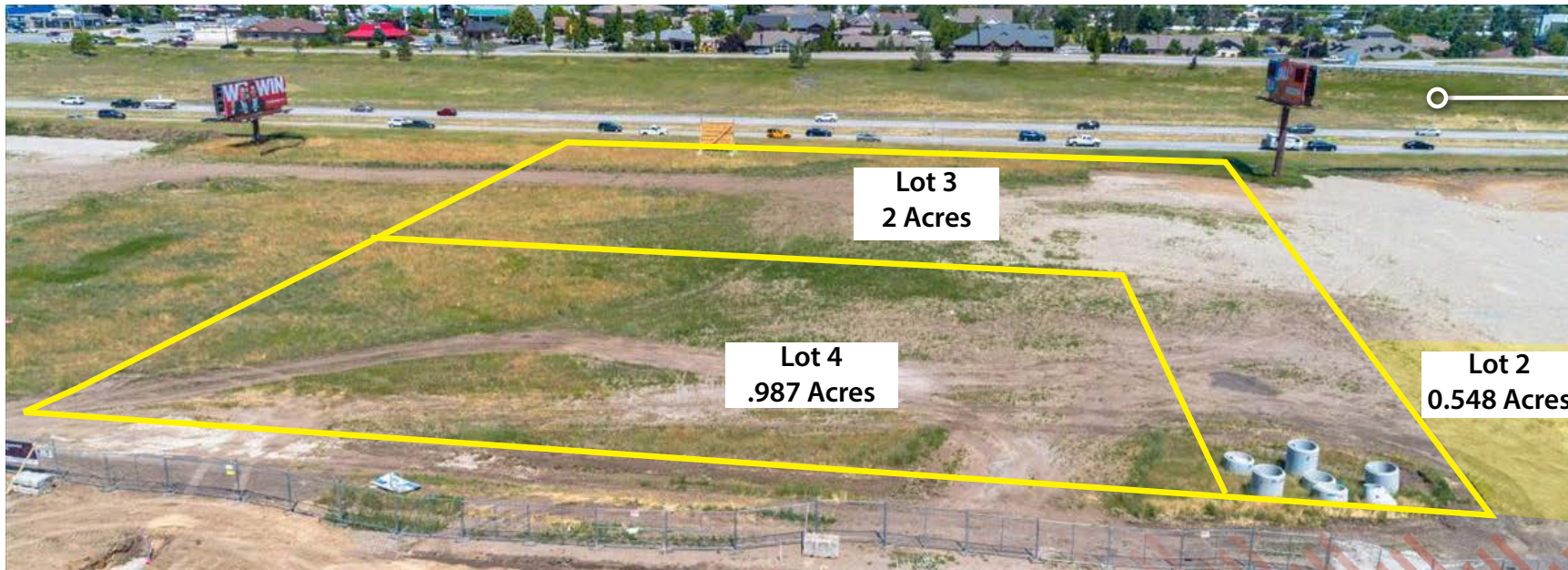




AVAILABLE LOTS



LOOKING SOUTHEAST



LOOKING NORTH



SITE PLAN MILLWORX

SYNERGY

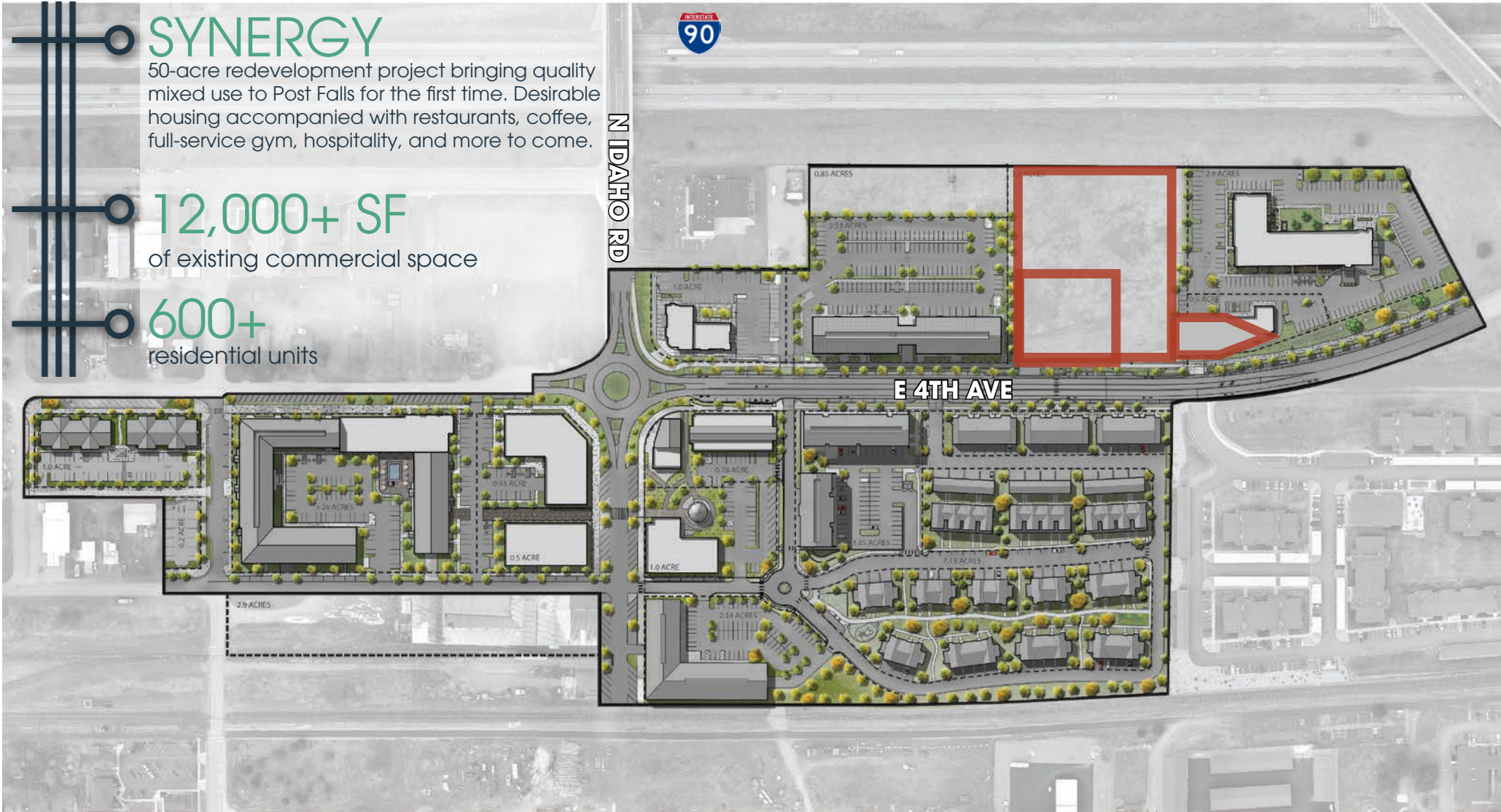
50-acre redevelopment project bringing quality mixed use to Post Falls for the first time. Desirable housing accompanied with restaurants, coffee, full-service gym, hospitality, and more to come.

12,000+ SF

of existing commercial space

600+

residential units












SELCTICE WAY

29,797 VPD



LOT 3
2 ACRES

HYATT

1,406 VPD







E 4TH AVE

KINDRED & CO

NORTH YARDS

LOT 4
0.987 ACRES

LOT 2
0.987 ACRES

14,891 VPD

MILLSITE REDEVELOPMENT





WOODLAND MEADOWS
330 UNITS