

Suites 100 & 200



PROPERTY OVERVIEW

- Available** 4,253 Square Feet
- Price:** \$2.10 | NNN
- Overview:**
 - Spacious & inviting entry/lobby
 - Fantastic floor plan consisting of 11-12 offices, 2 conference rooms and 2 entrances
 - Excellent South Reno location close to the new Northern NV Sierra Medical Center
 - Easy access from Double R and Longley Lane



MIKE VAN BLARICOM
PRINCIPAL
MIKEV@ARCHCRESTNV.COM
C: 775.250.9531
NV LIC S.0066330

KEVIN ANNIS, SIOR, CCIM
BROKER/PRINCIPAL
KANNIS@ARCHCRESTNV.COM
C: 775.742.2539
NV LIC B.1000617.LLC

MELANIE STEWART
TRANSACTION COORDINATOR
MSTEWART@ARCHCRESTNV.COM
P: 775.852.9800 x 205
NV LIC S.0061263

775.852.9800
WWW.ARCHCRESTNV.COM



FOR LEASE

5325 Reno Corporate Drive



MIKE VAN BLARICOM
PRINCIPAL
MIKEV@ARCHCRESTNV.COM
C: 775.250.9531
NV LIC S.0066330

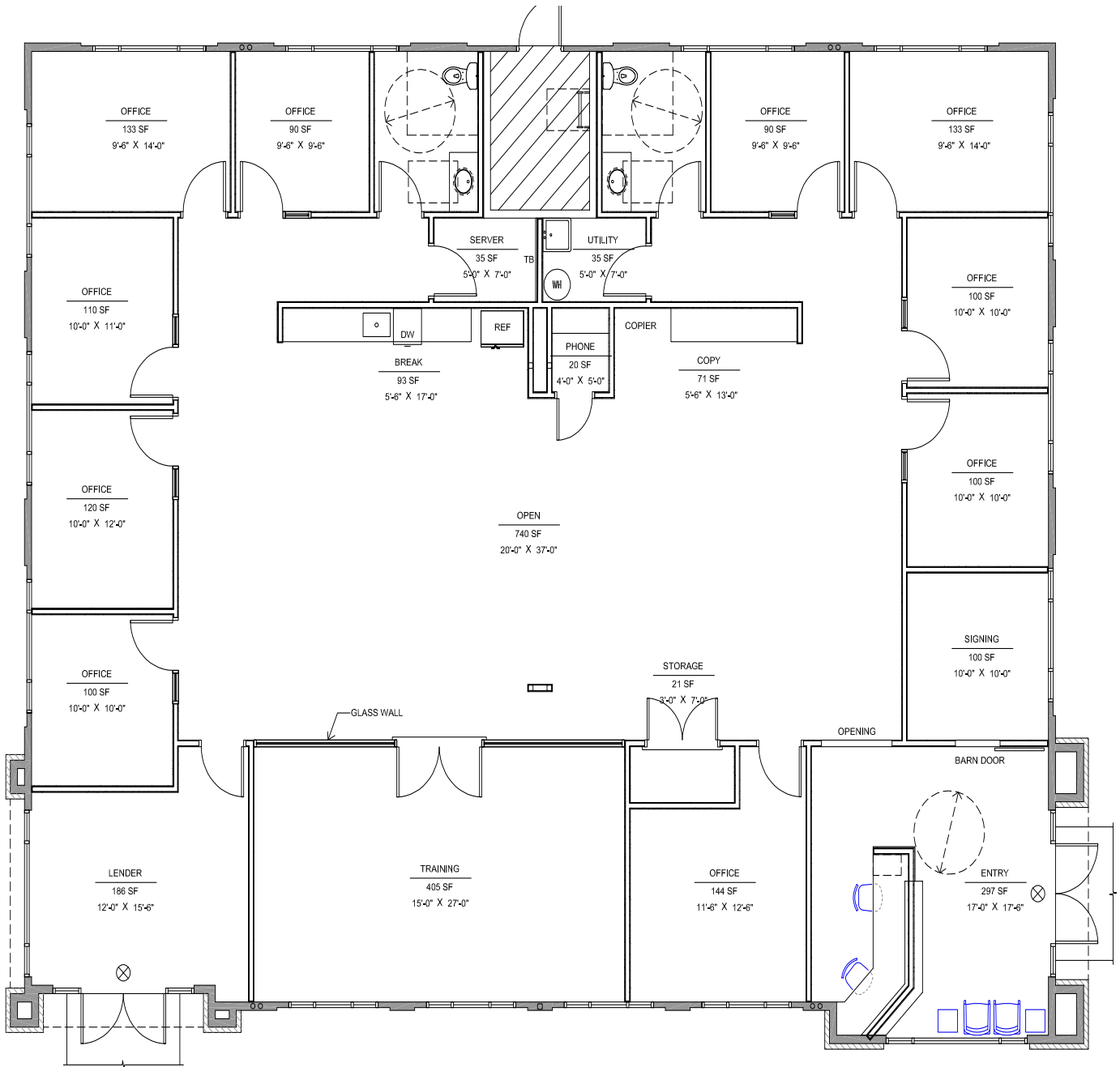
KEVIN ANNIS, SIOR, CCIM
BROKER/PRINCIPAL
KANNIS@ARCHCRESTNV.COM
C: 775.742.2539
NV LIC B.1000617.LLC

MELANIE STEWART
TRANSACTION COORDINATOR
MSTEWART@ARCHCRESTNV.COM
P: 775.852.9800 x 205
NV LIC S.0061263

775.852.9800
WWW.ARCHCRESTNV.COM

ArchCrest Commercial Partners • 5560 Longley Lane, Suite 100, Reno, NV 89511 • Fax: (775) 850-4251

The information contained herein was obtained from sources believed reliable; however, ArchCrest Commercial Partners makes no guarantees, warranties, or representations as to the completeness or accuracy thereof. The presentation of this property is submitted subject to errors, omissions, change of price or terms prior to sale or lease, or withdrawal without notice.



MIKE VAN BLARICOM
PRINCIPAL
MIKEV@ARCHCRESTNV.COM
C: 775.250.9531
NV LIC S.0066330

KEVIN ANNIS, SIOR, CCIM
BROKER/PRINCIPAL
KANNIS@ARCHCRESTNV.COM
C: 775.742.2539
NV LIC B.1000617.LLC

MELANIE STEWART
TRANSACTION COORDINATOR
MSTEWART@ARCHCRESTNV.COM
P: 775.852.9800 x 205
NV LIC S.0061263

775.852.9800
WWW.ARCHCRESTNV.COM