

525 3rd Avenue
Longmont, Colorado 80501
For Lease | Prime Commercial Space

Approx. 90-1,063 sq/ft
\$189.00 - \$1,775.00 Gross Lease



Eric Rutherford MBA, CCIM, GREEN
303.541.1908

erutherford@wkre.com
www.EricRutherford.com

United States Naval Academy Graduate Served as an Officer in
the United States Marine Corps



Dan Tremblay
720.564.6067

dtremblay@wkre.com
www.DanTremblay.com



Details

- Excellent location in this historic building with excellent visibility in downtown Longmont. Retail/office space available. Elevator. Walk to restaurants, shopping, breweries, and more. Close to biking and walking trails.
- Suite 120 - Ideal for a small private office space
- Suite 132 - Large open space to create your business. Newer flooring and paint. Shared bathrooms and shared kitchenette area.
- Suite 201 B - Located on the second floor, common area entry, hardwood floors, sink, built in cabinet.
- Suite 205 - 3rd floor open loft, flexible interior layout, making it attractive for offices, creative studios, or collaborative work environments.
- Street parking or City of Longmont parking lot parking.
- Gross lease, all utilities included.
- The building is wired for Nextlight (paid by tenant).

Details

Suite 120	Approx. 90 sq/ft	\$189.00 / month
Suite 132	Approx 422 sq/ft	\$850.00 / month
Suite 201B	Approx 362 sq/ft	\$600.00 / month
Suite 205	Approx. 1,063 sq/ft	\$1775.00 / month

Lobby



Suite Example



Kitchenette



525 3rd Avenue
Longmont, Colorado

Main Level



Eric Rutherford/Dan Tremblay

erutherford@wkre.com

Tel: (303) 541-1908

dtremblay@wkre.com

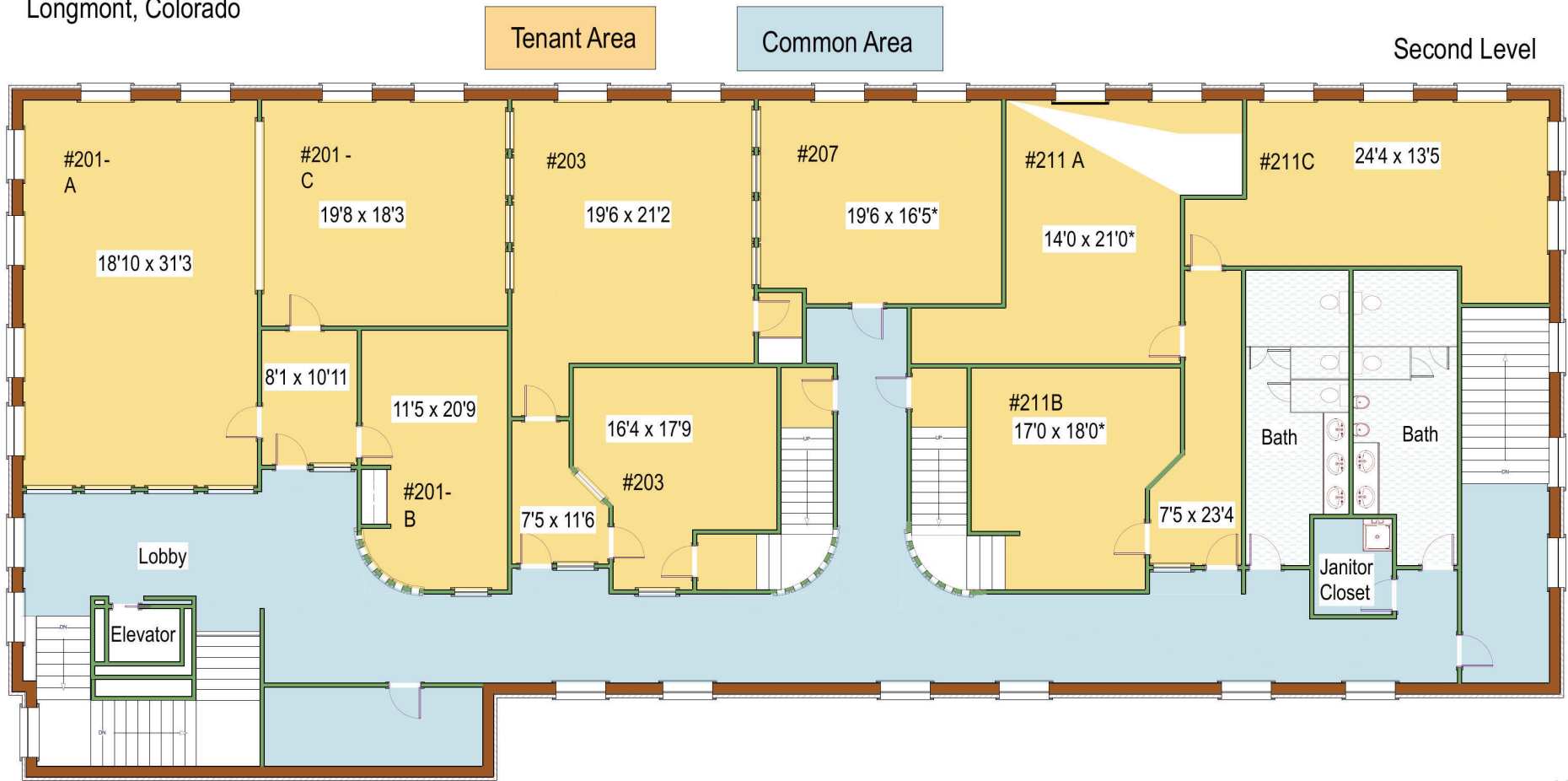
Tel: (720) 564-6067



Measurements are approximate and no responsibility is taken for any omission or mis-statement. These plans are for visual representation purposes only. Floor plan is not an architectural as-built.

Floor Plans prepared by Overhead Views, (303) 886-9578, esw@overheadviews.com

525 3rd Avenue
Longmont, Colorado



*Dimensions estimated, not able to access room.

Eric Rutherford/Dan Tremblay

erutherford@wkre.com

Tel: (303) 541-1908

dtremblay@wkre.com

Tel: (720) 564-6067



N



While every attempt has been made to ensure the accuracy of the floorplan contained here, measurements of doors, windows and rooms are approximate and no responsibility is taken for any omission or mis-statement. These plans are for visual representation purposes only and should be used as such by any prospective purchaser. Floor plan is not an architectural as-built. Square footage is determined using exterior wall dimensions and is not guaranteed.