



LOT SIZES:

1.33 - 11.39 Acres

PRICE:

\$5.50 PSF

HIGHLIGHTS:

- 8 Parcels varying between 1.33 acres - 11.39 acres
- Vacant land SE of the ND National Guard Armory, just off 52nd St NE
- Industrial Park with city water & sewer
- Easy Access to Bismarck Expressway & I-94
- Zoning: MA - Light Industrial



Mathew Reichert

Founder | Partner | CCIM
Commercial Realtor®

701.223.2450

matt@aspengroupprealstate.com



Charles Reichert

Commercial Realtor® | Partner

701.223.2450

charles@aspengroupprealstate.com

424 S 3rd Street, Suite 2 | Bismarck, ND | WWW.ASPENGROUPPREALSTATE.COM

This information has been secured from sources we believe to be reliable, but we make no representation or warranties, expressed or implied, as to the accuracy of the information. All references to age, square footage, income and expenses are approximate. Buyers or lessors should conduct their own independent investigations and rely on those results.



FOR SALE

EAST BISMARCK INDUSTRIAL LAND
MIRIAM AVE, PLATOON AVE, BRIGADE ST | BISMARCK, ND

PROPERTY DETAILS

TRACT 1 | 1816 BRIGADE STREET, BISMARCK ND

PID #: 2200-002-150

LEGAL DESCRIPTION: LOT 3, BLOCK 2, EAST DIVIDE IND PARK ADDITION

LOT SIZE: 1.33 Acres (57,902 SF)

PRICE: \$5.50 PSF (\$318,461.00)

ZONING: MA - Light Industrial

2024 TAXES: \$7,463.30

SPECIAL ASSESSMENTS: \$6,168.62 Installment; \$32,032.77 Remaining Balance

TRACT 2 | 1702 BRIGADE STREET, BISMARCK ND

PID #: 2200-002-200

LEGAL DESCRIPTION: LOT 4, BLOCK 2, EAST DIVIDE IND PARK ADDITION

LOT SIZE: 11.39 Acres (496,221 SF)

PRICE: \$5.50 PSF (\$2,729,215.50)

ZONING: MA - Light Industrial

2024 TAXES: \$37,613.01

SPECIAL ASSESSMENTS: \$29,877.93 Installment; \$149,432.28 Remaining Balance

TRACT 3 | 1915 BRIGADE STREET, BISMARCK ND

PID #: 2200-003-001

LEGAL DESCRIPTION: LOT 1, BLOCK 3, EAST DIVIDE IND PARK ADDITION

LOT SIZE: 1.82 Acres (79,220 SF)

PRICE: \$5.50 PSF (\$435,710.00)

ZONING: MA - Light Industrial

2024 TAXES: \$6,115.94

SPECIAL ASSESSMENTS: \$4,345.68 Installment; \$21,336.24 Remaining Balance

TRACT 4 | 5013 MIRIAM AVENUE/5013 E DIVIDE AVENUE, BISMARCK ND

PID #: 2200-003-025

LEGAL DESCRIPTION: LOT 2, BLOCK 3, EAST DIVIDE IND PARK ADDITION

LOT SIZE: 1.61 Acres (70,012 SF)

PRICE: \$5.50 PSF (\$385,066.00)

ZONING: MA - Light Industrial

2024 TAXES: \$3,590.57

SPECIAL ASSESSMENTS: \$2,025.70 Installment; \$9,178.52 Remaining Balance

424 S 3rd Street, Suite 2 | Bismarck, ND | WWW.ASPENGROUPREALESTATE.COM

This information has been secured from sources we believe to be reliable, but we make no representation or warranties, expressed or implied, as to the accuracy of the information. All references to age, square footage, income and expenses are approximate. Buyers or lessors should conduct their own independent investigations and rely on those results.

PROPERTY DETAILS

TRACT 5 | 5107 MIRIAM AVENUE/5107 E DIVIDE AVENUE, BISMARCK ND

PID #: 2200-003-050

LEGAL DESCRIPTION: LOT 3, BLOCK 3, EAST DIVIDE IND PARK ADDITION

LOT SIZE: 1.49 Acres (64,884 SF)

PRICE: \$5.50 PSF (\$356,862.00)

ZONING: MA - Light Industrial

2024 TAXES: \$2,668.08

SPECIAL ASSESSMENTS: \$1,553.11 Installment; \$7,140.06 Remaining Balance

TRACT 6 | 5008 PLATOON AVENUE, BISMARCK ND

PID #: 2200-003-125

LEGAL DESCRIPTION: LOT 6, BLOCK 3, EAST DIVIDE IND PARK ADDITION

LOT SIZE: 1.69 Acres (73,723 SF)

PRICE: \$5.50 PSF (\$405,476.50)

ZONING: MA - Light Industrial

2024 TAXES: \$9,006.19

SPECIAL ASSESSMENTS: \$7,738.41 Installment; \$40,125.70 Remaining Balance

TRACT 7 | 4902 PLATOON AVENUE, BISMARCK ND

PID #: 2200-003-150

LEGAL DESCRIPTION: LOT 7, BLOCK 3, EAST DIVIDE IND PARK ADDITION

LOT SIZE: 1.95 Acres (84,946 SF)

PRICE: \$5.50 PSF (\$467,203.00)

ZONING: MA - Light Industrial

2024 TAXES: \$11,278.33

SPECIAL ASSESSMENTS: \$9,817.38 Installment; \$51,125.51 Remaining Balance

TRACT 8 | 1907 BRIGADE STREET, BISMARCK ND

PID #: 2200-003-175

LEGAL DESCRIPTION: LOT 8, BLOCK 3, EAST DIVIDE IND PARK ADDITION

LOT SIZE: 1.52 Acres (66,178 SF)

PRICE: \$5.50 PSF (\$363,979)

ZONING: MA - Light Industrial

2024 TAXES: \$7,912.83

SPECIAL ASSESSMENTS: \$6,774.64 Installment; \$35,263.74 Remaining Balance

PROPERTY DETAILS

SOLD - TRACT 9 | 4911 PLATOON AVENUE, BISMARCK ND

PID #: 2200-004-025

LEGAL DESCRIPTION: LOT 2, BLOCK 4, EAST DIVIDE IND PARK ADDITION

LOT SIZE: 0.69 Acres (29,943 SF)

ZONING: MA - Light Industrial

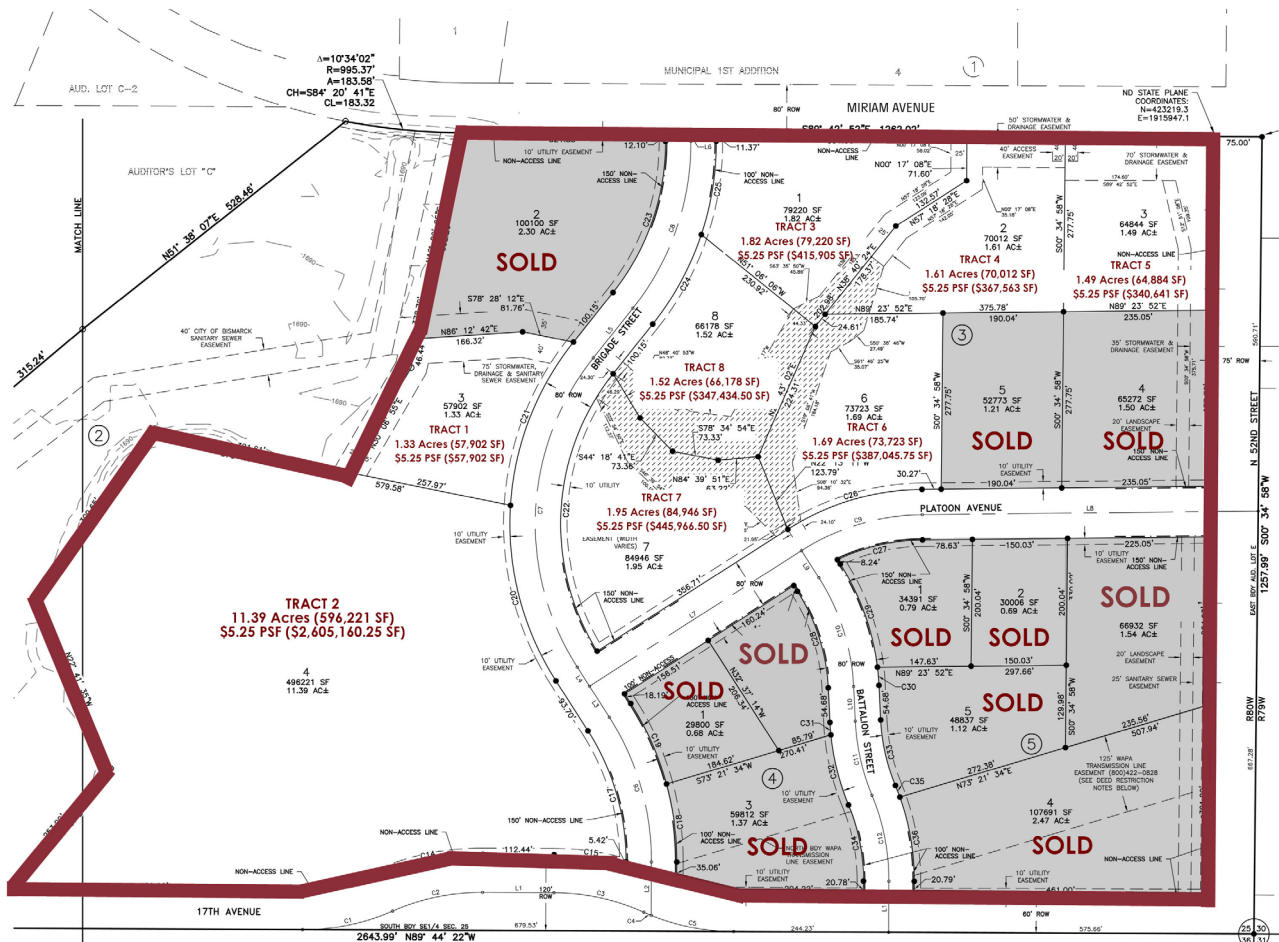
SOLD - TRACT 10 | 5109 PLATOON AVENUE, BISMARCK ND

PID #: 2200-005-050

LEGAL DESCRIPTION: LOT 3, BLOCK 5, EAST DIVIDE IND PARK ADDITION

LOT SIZE: 1.54 Acres (66,932 SF)

ZONING: MA - Light Industrial



424 S 3rd Street, Suite 2 | Bismarck, ND | WWW.ASPENGROUPREALESTATE.COM

This information has been secured from sources we believe to be reliable, but we make no representation or warranties, expressed or implied, as to the accuracy of the information. All references to age, square footage, income and expenses are approximate. Buyers or lessors should conduct their own independent investigations and rely on those results.

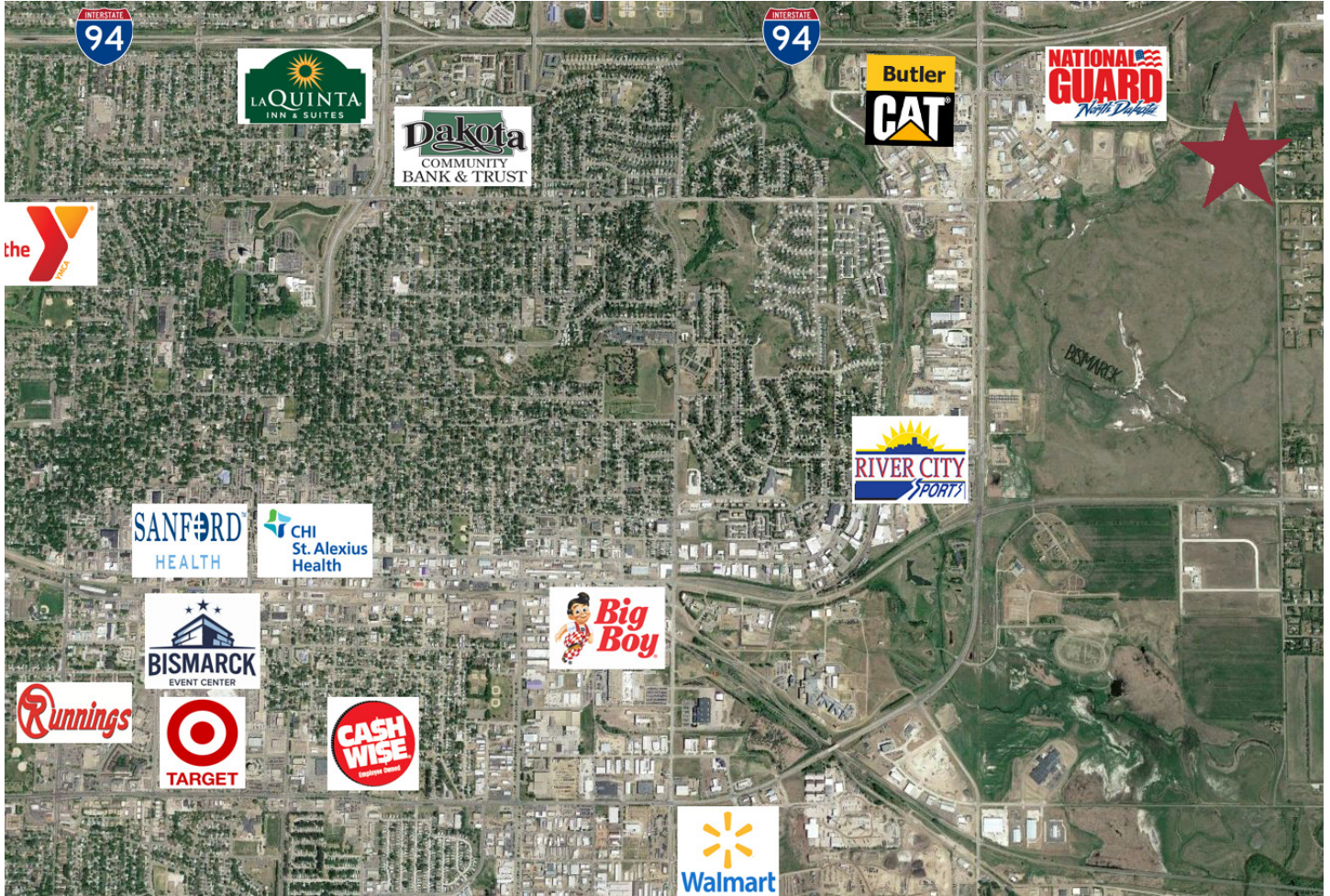
PROPERTY PHOTOS



424 S 3rd Street, Suite 2 | Bismarck, ND | WWW.ASPENGROUPREALESTATE.COM

This information has been secured from sources we believe to be reliable, but we make no representation or warranties, expressed or implied, as to the accuracy of the information. All references to age, square footage, income and expenses are approximate. Buyers or lessors should conduct their own independent investigations and rely on those results.

LOCATION MAP



424 S 3rd Street, Suite 2 | Bismarck, ND | WWW.ASPENGROUPREALESTATE.COM

This information has been secured from sources we believe to be reliable, but we make no representation or warranties, expressed or implied, as to the accuracy of the information. All references to age, square footage, income and expenses are approximate. Buyers or lessors should conduct their own independent investigations and rely on those results.