

**VACANT LAND  
FOR SALE**



**BETHEL CEMETERY ROAD  
REEVESVILLE, SC**



**COLDWELL BANKER  
COMMERCIAL  
ATLANTIC**

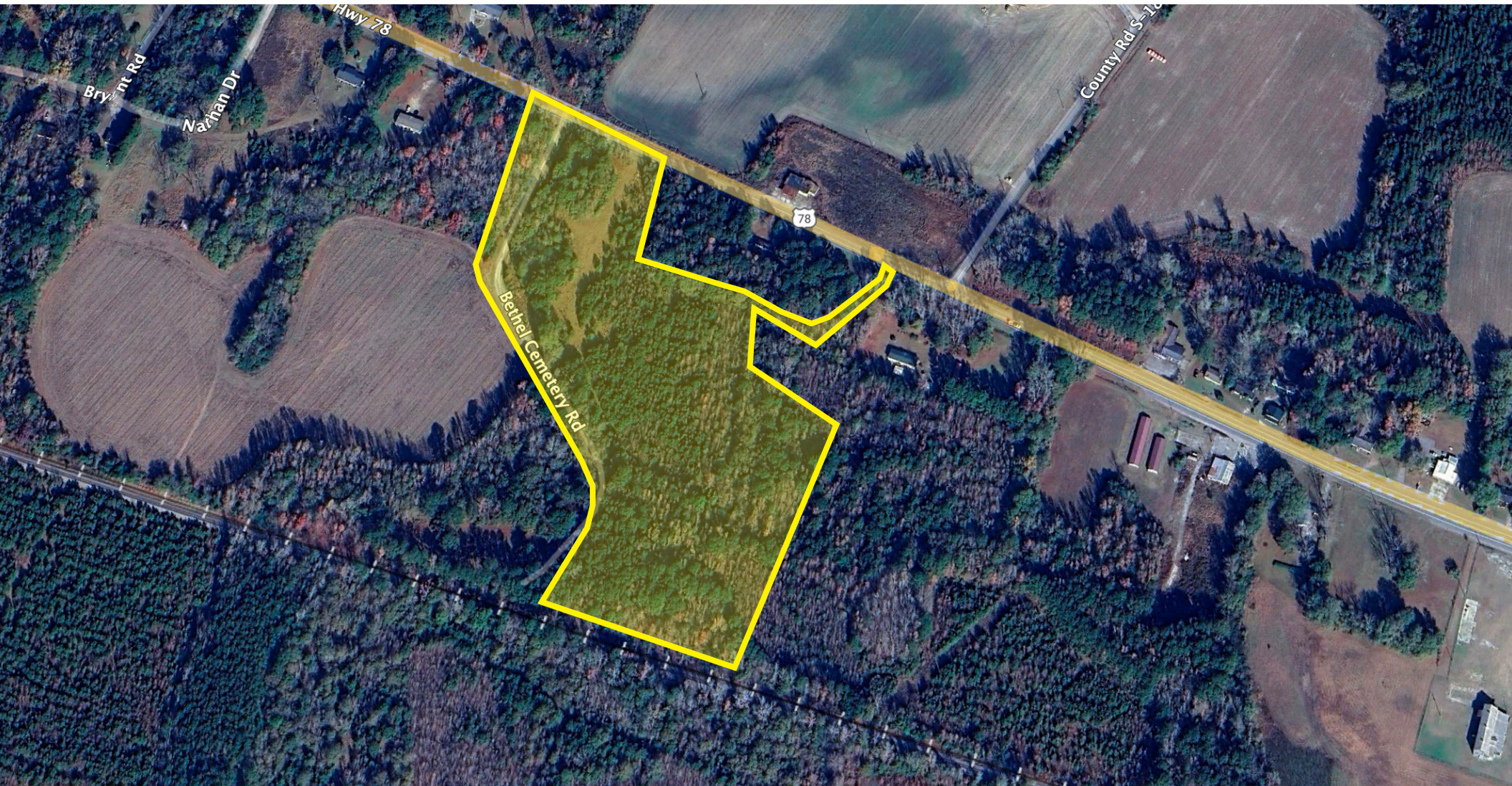


# VACANT LAND FOR SALE | \$329,380 - 12.94 ACRES

**TMS #031-00-00-047**

**Zoning: Dorchester - AR - Agricultural Residential**

+/-12.94 Acres available for sale off of Hwy 78, just outside of Reevesville, SC and currently zoned AR within Dorchester County.



**COLDWELL BANKER**  
**COMMERCIAL**  
ATLANTIC

Bethel Cemetery Road | Reevesville, SC 29471

Neal Walsh • [nwalsh@cbcatlantic.com](mailto:nwalsh@cbcatlantic.com) | Caine Halter, CCIM • [chalter@cbcatlantic.com](mailto:chalter@cbcatlantic.com)



Neal Walsh  
SENIOR BROKER  
843.330.3787  
nwalsh@cbsatlantic.com

Caine Halter, CCIM  
Senior Broker  
864.270.8623  
chalter@cbsatlantic.com



3506 W Montague Ave | North Charleston, SC 29418  
cbsatlantic.com | cbcretailatlantic.com

This information has been obtained from sources believed reliable but has not been verified for accuracy or completeness. Coldwell Banker Commercial Atlantic makes no guarantee, representation or warranty and accepts no responsibility or liability as to the accuracy, completeness, or reliability of the information contained herein. You should conduct a careful, independent investigation of the property and verify all information. Any reliance on this information is solely at your own risk.

The information contained herein should be considered confidential and remains the sole property of Coldwell Banker Commercial Atlantic at all times. Although every effort has been made to ensure accuracy, no liability will be accepted for any errors or omissions. Disclosure of any information contained herein is prohibited except with the express written permission of Coldwell Banker Commercial Atlantic.