

# Oakland Business Park

11801-11891 E 33rd Ave, Aurora, Colorado

M B R C



## AVAILABILITY:

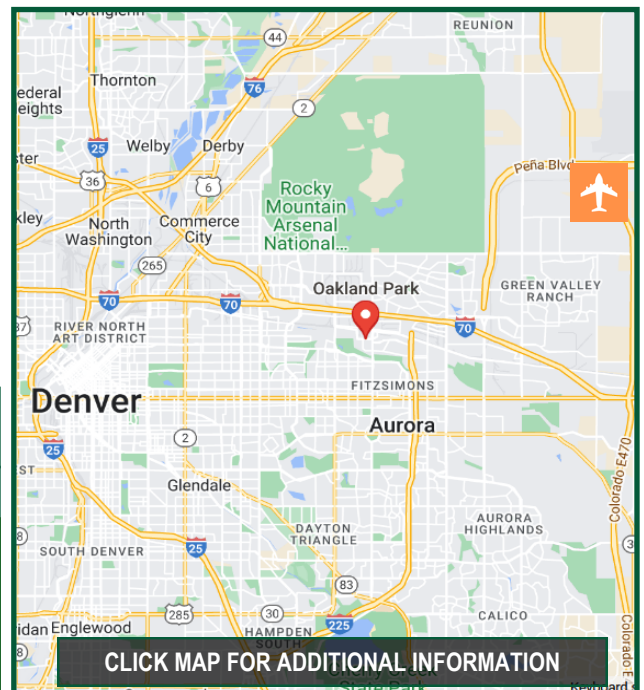
- 1 UNIT: 11881 D..... 1,330 SF (2,250/mo MG)**
- 2 UNITS: 11851 C&D..... 2,660 SF (4,500/mo MG)**
- 3 UNITS: 11831 A,B&C..... 3,990 SF (6,750/mo MG)**

**MICHAEL BLOOM**  
REALTY COMPANY



## IMPORTANT FEATURES:

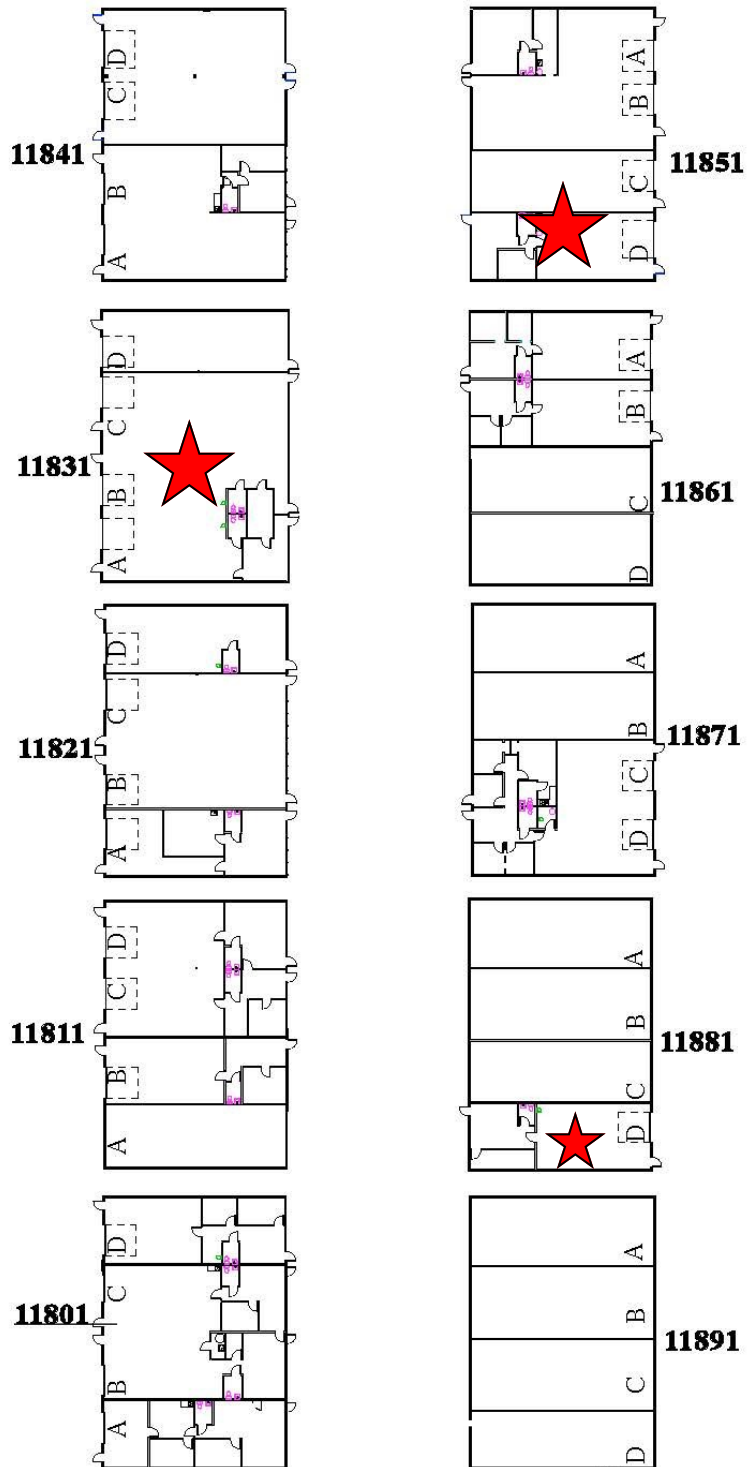
- PERIMETER SECURITY FENCE
- 10' X 10' DRIVE-IN LOADING DOORS
- 14' WAREHOUSE CEILING HEIGHT
- GENEROUS OFF STREET PARKING
- INDUSTRIAL ZONING



CLICK MAP FOR ADDITIONAL INFORMATION

Available	Total SF	Office SF	Loading	Power
11881 D	1,330	+/- 400	Drive-In	3 Phase
11851 C&D	2,660	+/- 800	Drive-In	3 Phase
11831 A,B&C	3,990	+/- 600	Drive-In	3 Phase

### Oakland Business Park



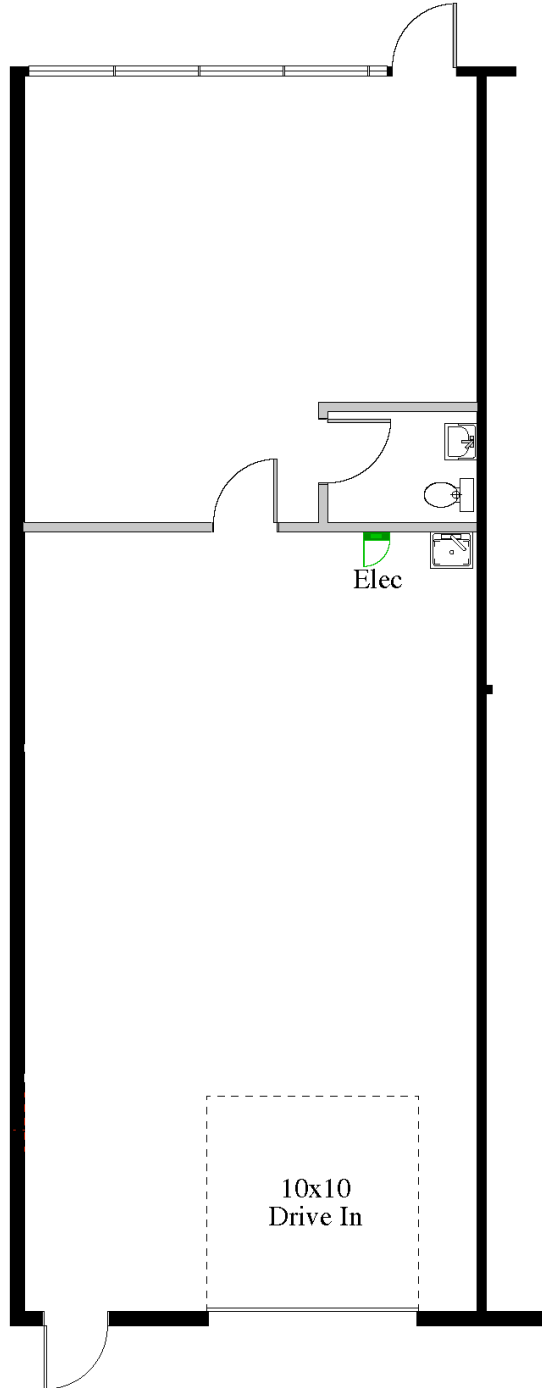
Brokerage Disclosure



**1** Site Plan  
Scale: 1" = 50 ft

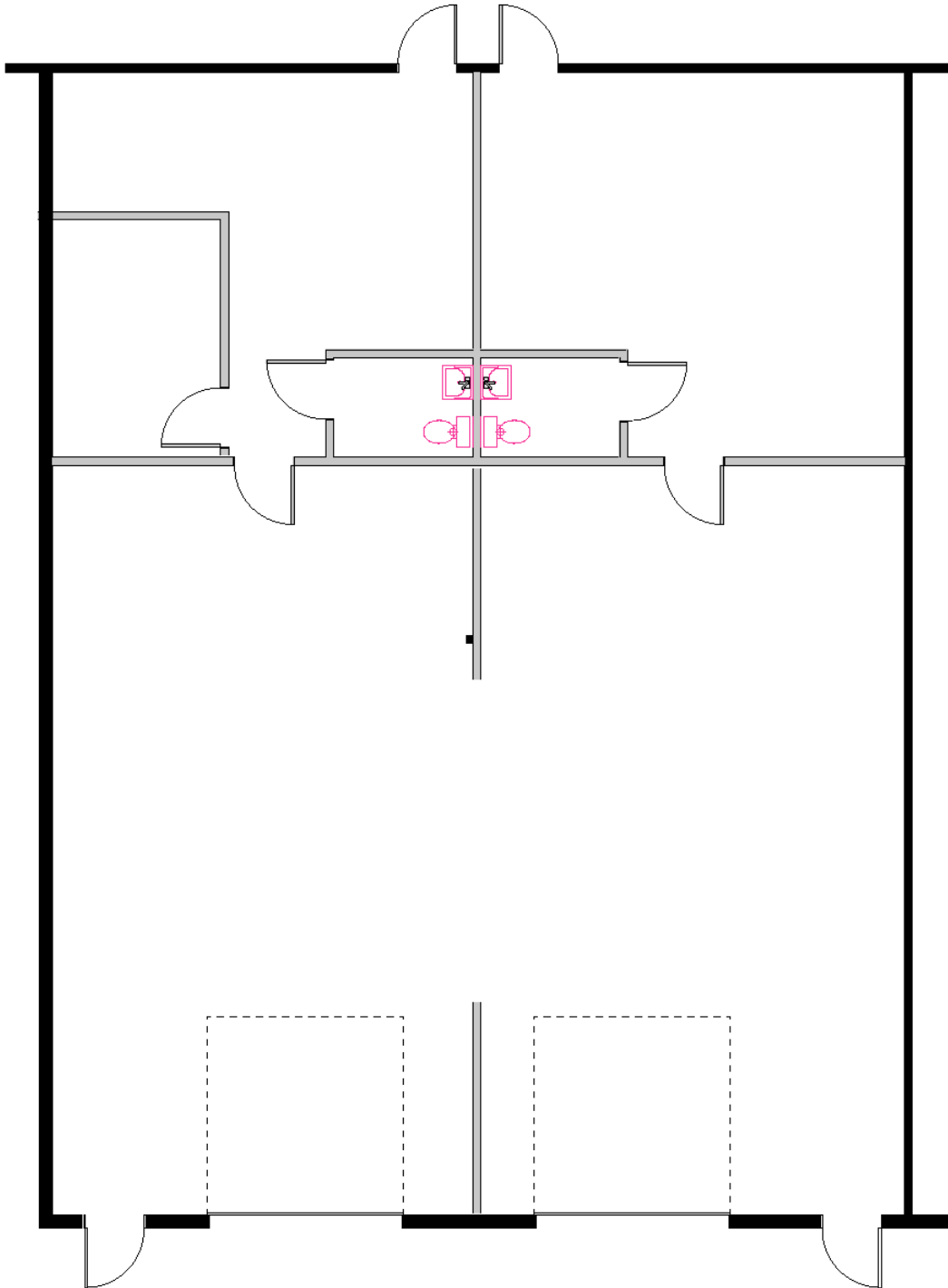


11881 East 33rd Unit D



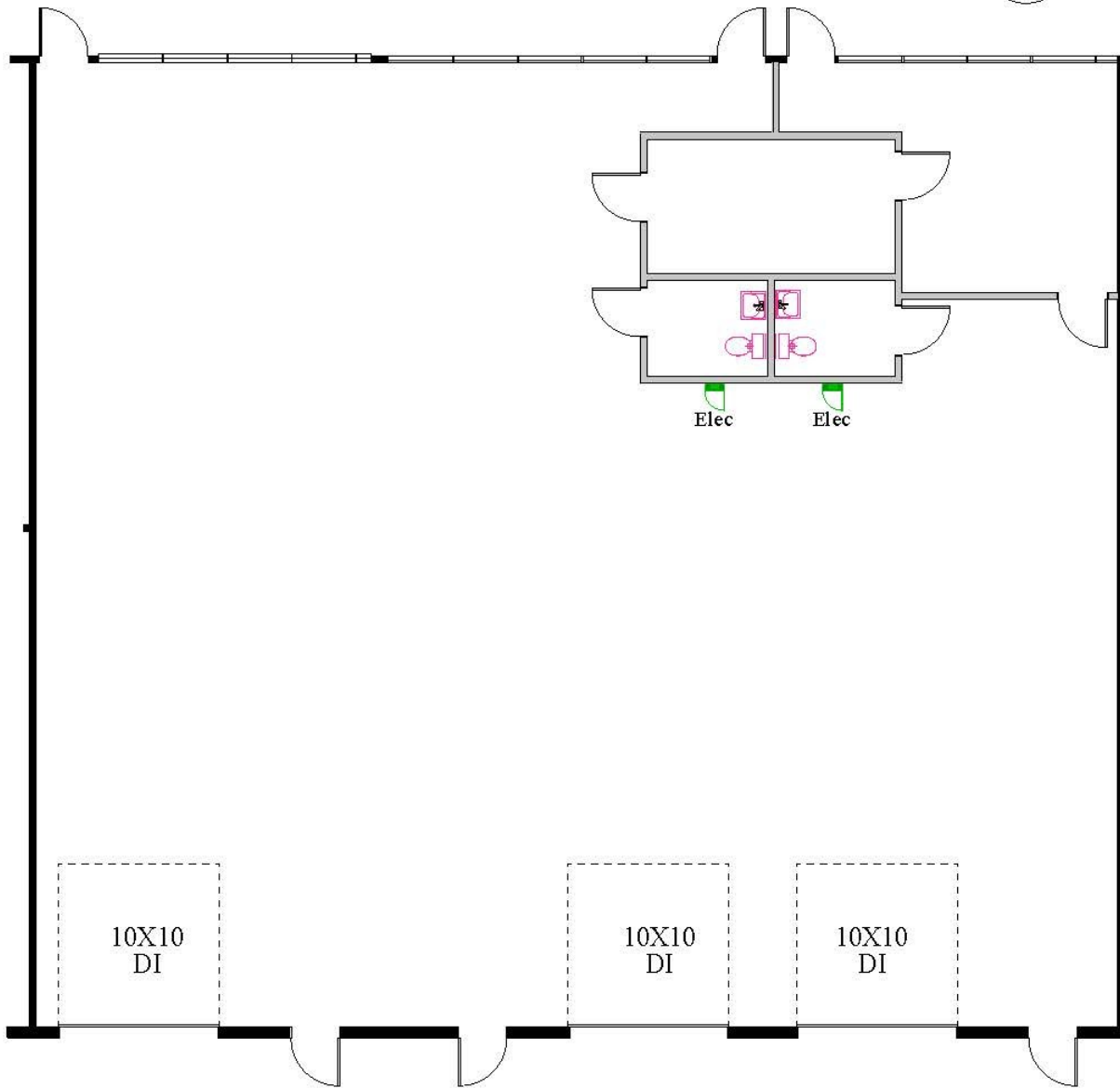
**1** Demolition Plan 1,330 sf  
Scale: 1/8" = 1'-0"

# 11851 East 33rd Units C&D



**1** Floor Plan  
Scale: 1/8" = 1'-0" 2,660 sf

# 11831 East 33rd Units A,B, & C



**1** Floor Plan  
Scale: 1" = 10 ft