

FOR LEASE

830 SF
Commercial Space



5014 SERENA DRIVE, UNIT #1

Beamsville, ON

Michael Di Berardo, B Mus, CD, Sales Representative
905.741.0732 | michaeldiberardo@royallepage.ca | www.michaeldiberardo.com

Royal LePage Macro Realty
2247 Rymal Road E #250, Stoney Creek, ON
Independently Owned & Operated

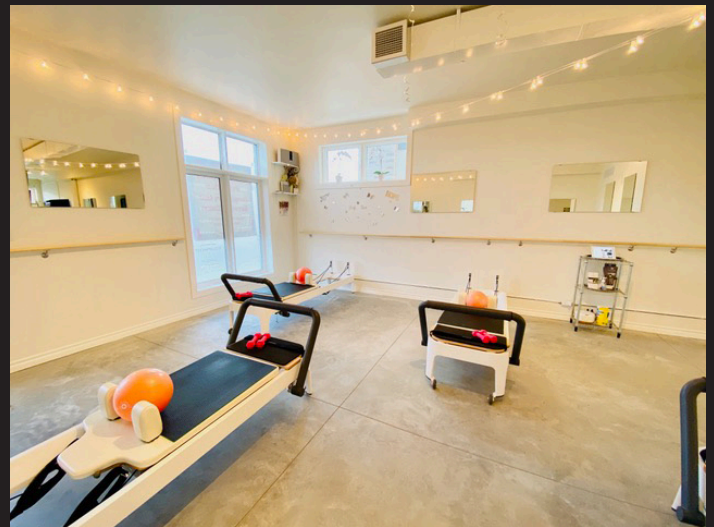
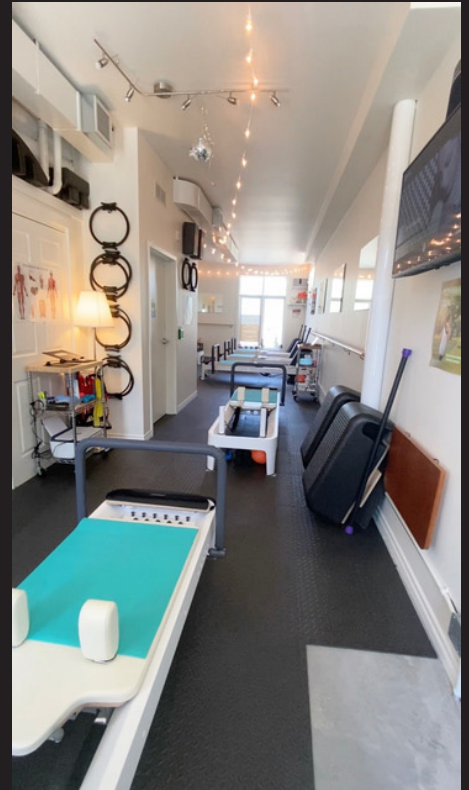
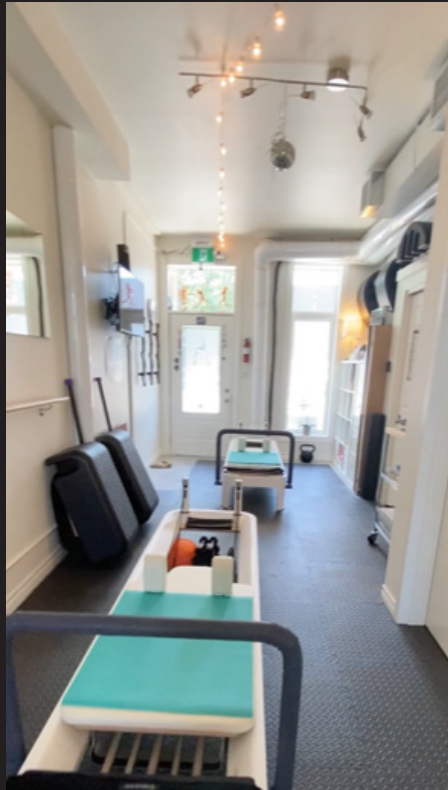
PROPERTY OVERVIEW

\$2,050.00/MONTH + TMI

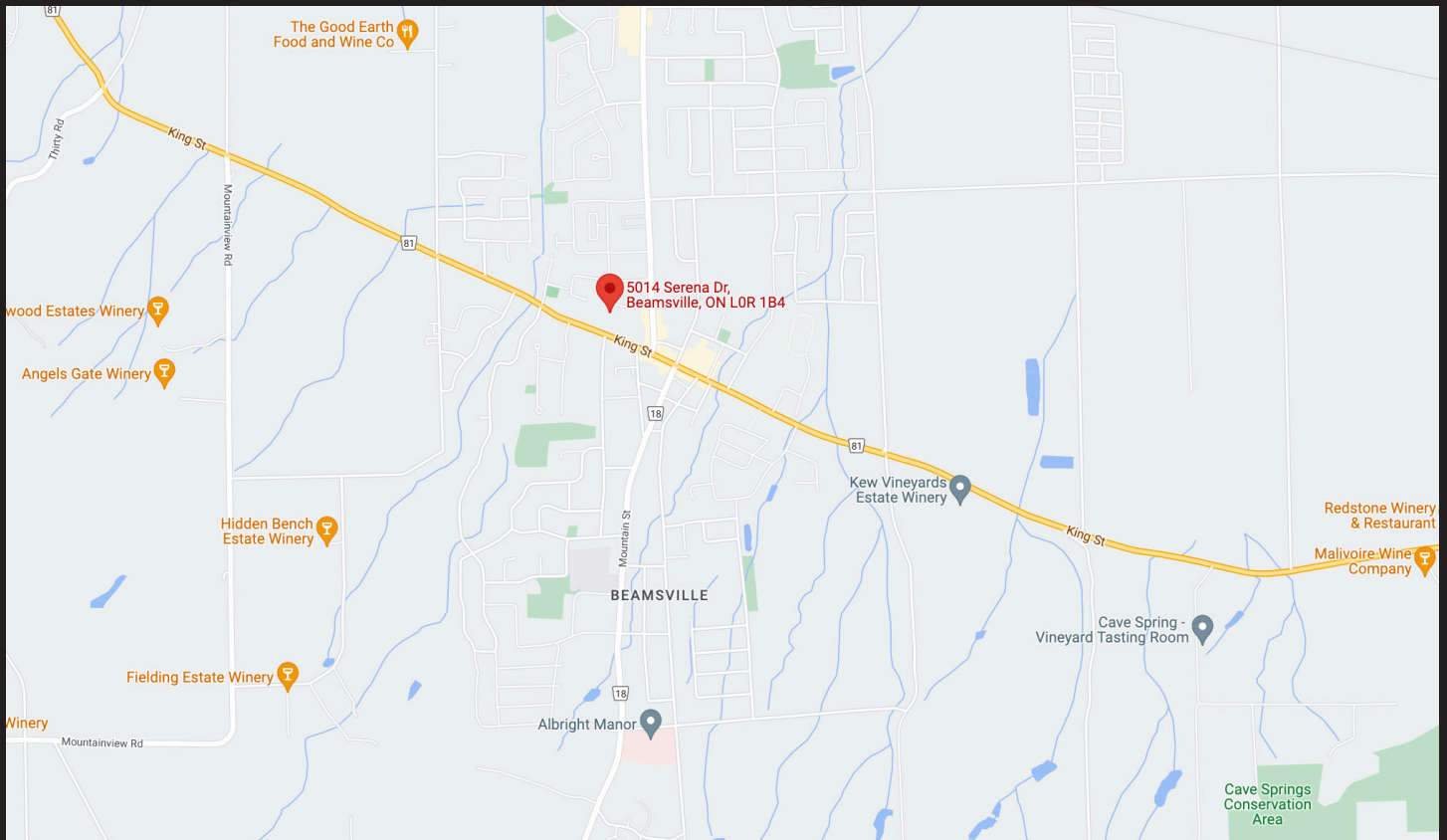
Property Features

- GC - General Commercial Zone, allows for many uses
- Flexible possession
- 830 SF
- 2 dedicated parking spots plus street parking available
- Close to QEW
- Front and rear doorways
- Accessible washroom
- Efficient HVAC and water system
- Contact Listing Agent for your private showing

PROPERTY PHOTOS



LOCATION MAP



All offices are independently owned and operated, except those marked as indicated at rlp.ca/disclaimer. Not intended to solicit currently listed properties or buyers under contract. The above information is from sources believed reliable, however, no responsibility is assumed for the accuracy of this information. ©2022 Bridgemark Real Estate Services Manager Limited. All rights reserved.