

# INDUSTRIAL SPACE FOR LEASE



## Property Highlights

**+15,404**

AVAILABLE SF

**\$2.00**

LEASE RATE (SF/IG)

**22'**

CEILING HEIGHT

Flexible lease terms available

Building is 90% warehouse, 10% office

Seeking industrial uses

Eight (8), twelve-foot (12') grade-level doors

Twenty-two foot (22') ceiling height

Locally owned and managed

*For more information  
or touring, contact*

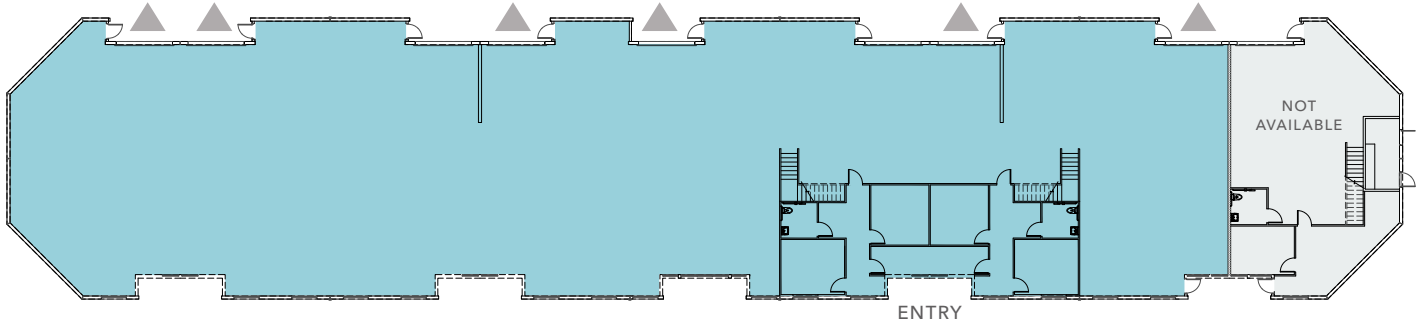
**WILL BALLOWE**  
Kidder Mathews  
925.389.2499  
will.ballowe@kidder.com  
LIC N° 02053125

**BLAKE DICUS**  
Lee & Associates  
925-737-4144  
bdicus@lee-associates.com  
LIC N° 02074870

**KIDDER.COM**

This information supplied herein is from sources we deem reliable. It is provided without any representation, warranty, or guarantee, expressed or implied as to its accuracy. Prospective Buyer or Tenant should conduct an independent investigation and verification of all matters deemed to be material, including, but not limited to, statements of income and expenses. Consult your attorney, accountant, or other professional advisor.

# FLOOR PLAN



*±15,404*

SF AVAILABLE

*6 ROLL UP*

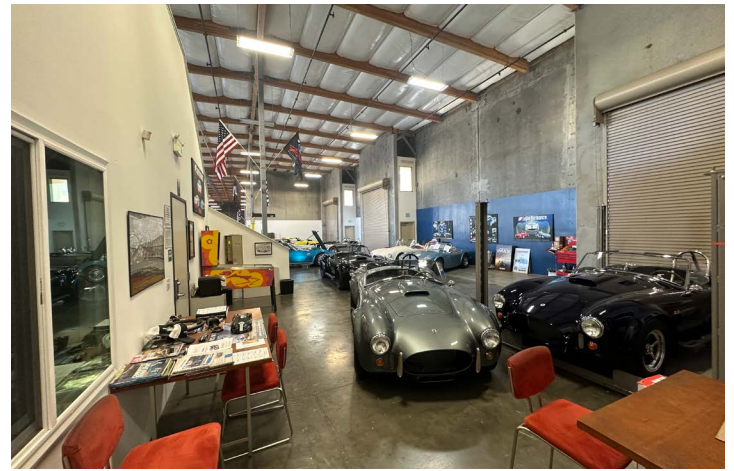
GRADE LEVEL DOORS

*\$2.00*

LEASE RATE (SF/IG)

▲ Grade level loading

FLOOR PLAN NOT TO SCALE



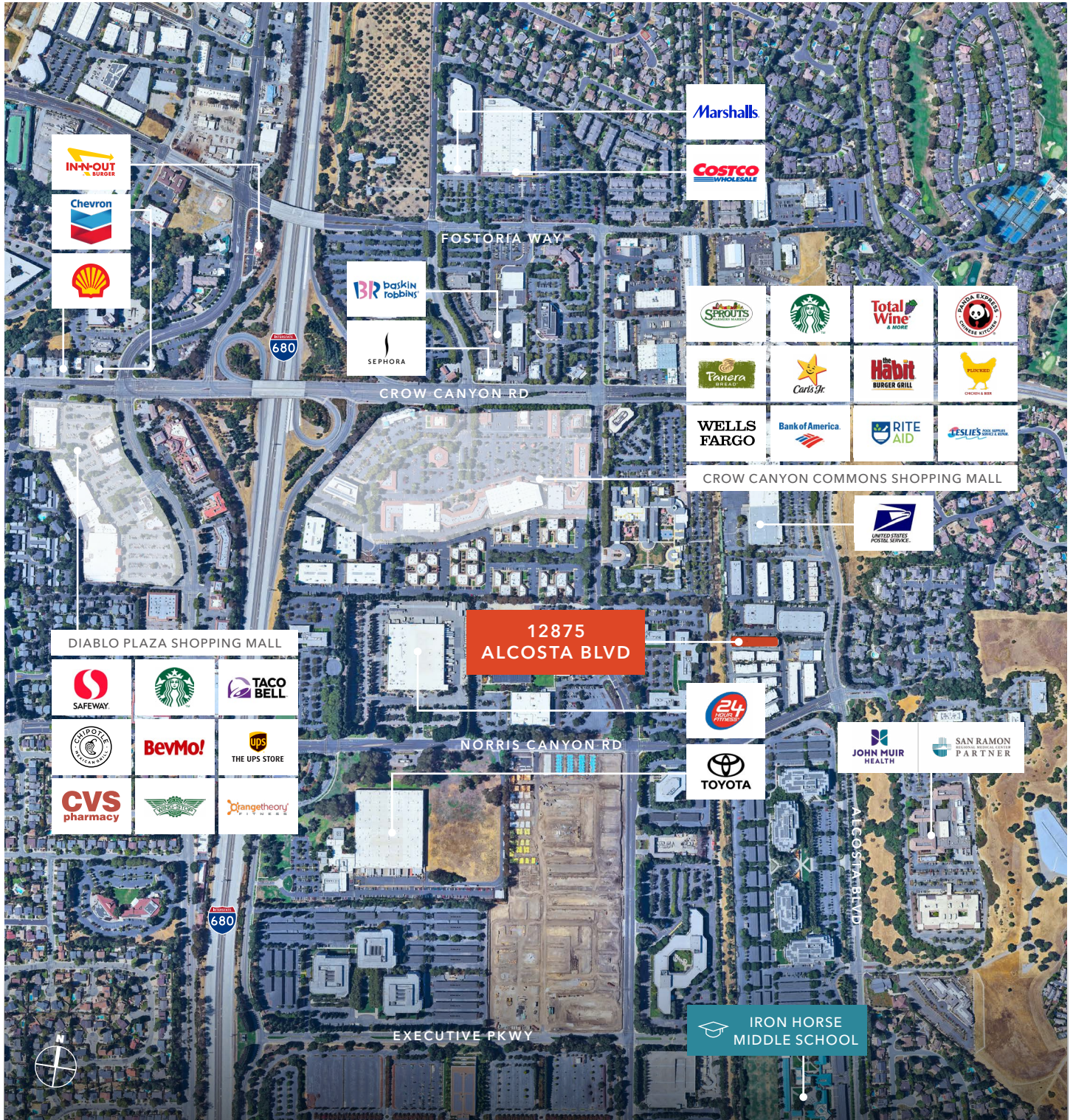
**WILL BALLOWE** | Kidder Mathews | 925.389.2499 | will.ballowe@kidder.com | LIC N° 02053125

**BLAKE DICUS** | Lee & Associates | 925-737-4144 | bdicus@lee-associates.com | LIC N° 02074870

**KIDDER.COM**

This information supplied herein is from sources we deem reliable. It is provided without any representation, warranty, or guarantee, expressed or implied as to its accuracy. Prospective Buyer or Tenant should conduct an independent investigation and verification of all matters deemed to be material, including, but not limited to, statements of income and expenses. Consult your attorney, accountant, or other professional advisor.





WILL BALLOWE | Kidder Mathews | 925.389.2499 | will.ballowe@kidder.com | LIC N° 02053125  
 BLAKE DICUS | Lee & Associates | 925-737-4144 | bdicus@lee-associates.com | LIC N° 02074870

KIDDER.COM

This information supplied herein is from sources we deem reliable. It is provided without any representation, warranty, or guarantee, expressed or implied as to its accuracy. Prospective Buyer or Tenant should conduct an independent investigation and verification of all matters deemed to be material, including, but not limited to, statements of income and expenses. Consult your attorney, accountant, or other professional advisor.

