

Retail/Office for Lease 1520 - DUPONT STATION

1520 Wilmington Dr, DuPont, WA 98327



RETAIL

AVAILABLE SF: Suite 120: 946 SF
Suite 140: 1,675 SF
RATE: \$28.00-\$30.00 SF / Yr
NNN

OFFICE

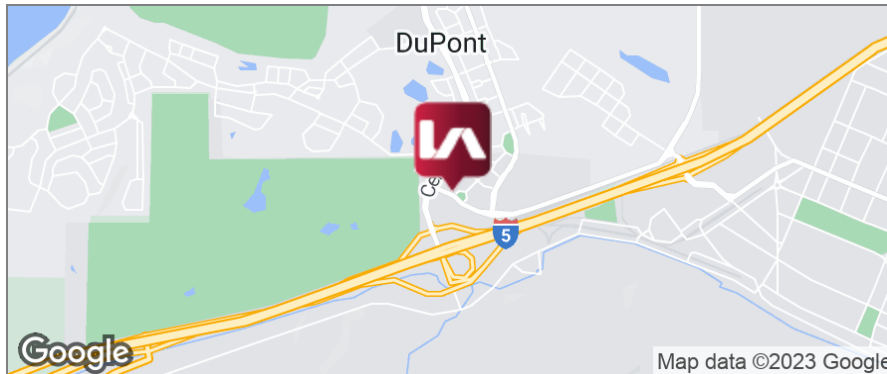
AVAILABLE SF: Suite 200: 2,728 SF
RATE: \$20.00 SF/Yr NNN

COMMENTS

Prime retail/office space located in the heart of the DuPont Business District. 2nd Floor space has newer office build-out.

Located a half mile from Joint Base Lewis McChord Military Base (JBLM) with heavy daytime population.

Conveniently located with close access to I-5 and several hotels nearby.



DEMOGRAPHICS

	1 MILE	3 MILES	5 MILES
Total Households	1,670	4,672	8,790
Total Population	4,058	14,864	29,186
Average HH Income	\$123,098	\$106,892	\$102,967

CONTACT

Yeh-Hee Hahn

yhahn@lee-associates.com

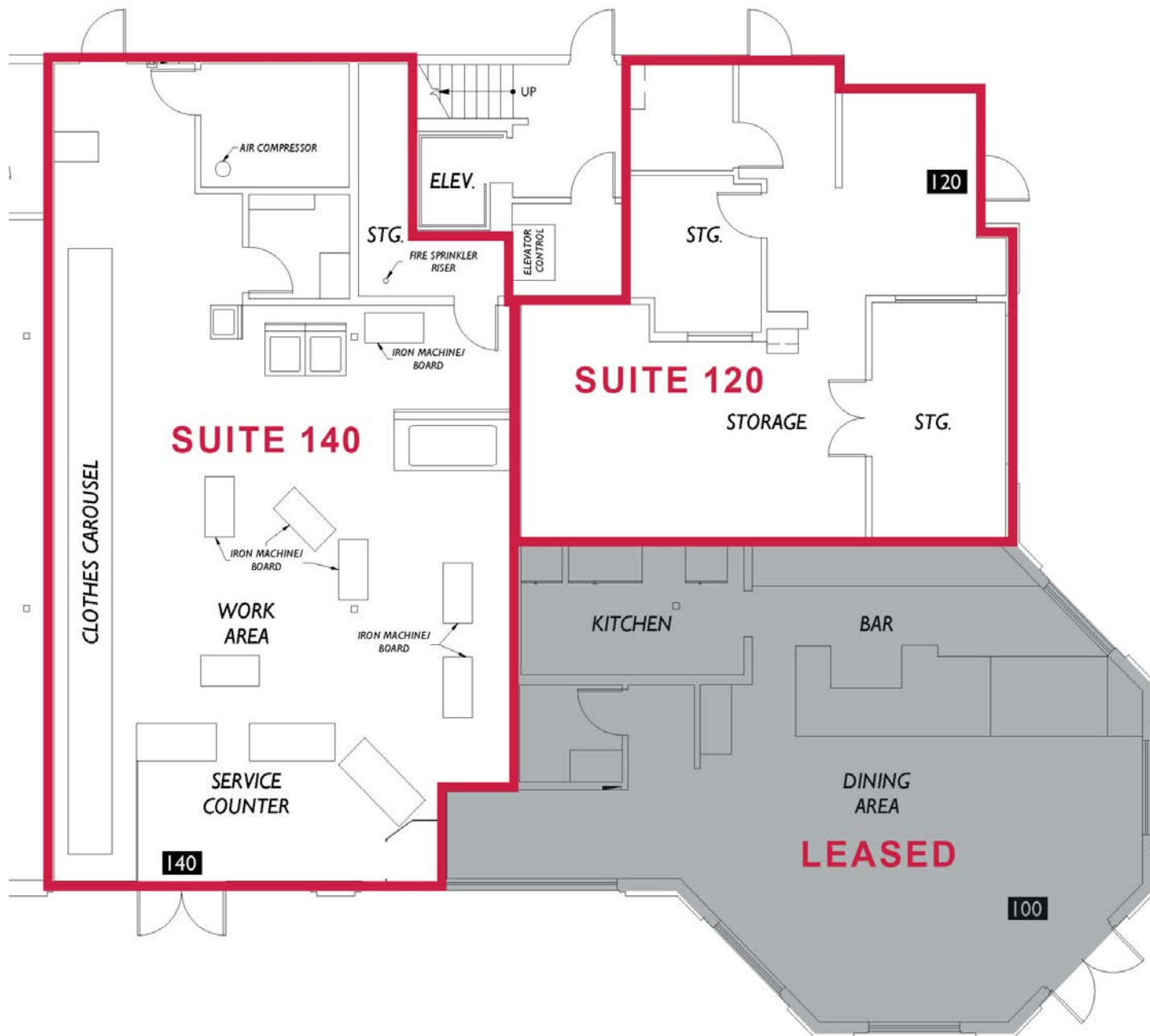
D 253.238.0045

We obtained the information above from sources we believe to be reliable. However, we have not verified its accuracy and make no guarantee, warranty or representation about it. It is submitted subject to the possibility of errors, omissions, change of price, rental or other conditions, prior sale, lease or financing, or withdrawal without notice. We include projections, opinions, assumptions or estimates for example only, and they may not represent current or future performance of the property. You and your tax and legal advisors should conduct your own investigation of the property and transaction.

Retail/Office for Lease

1520 - DUPONT STATION

1520 Wilmington Dr, DuPont, WA 98327



CONTACT

Yeh-Hee Hahn

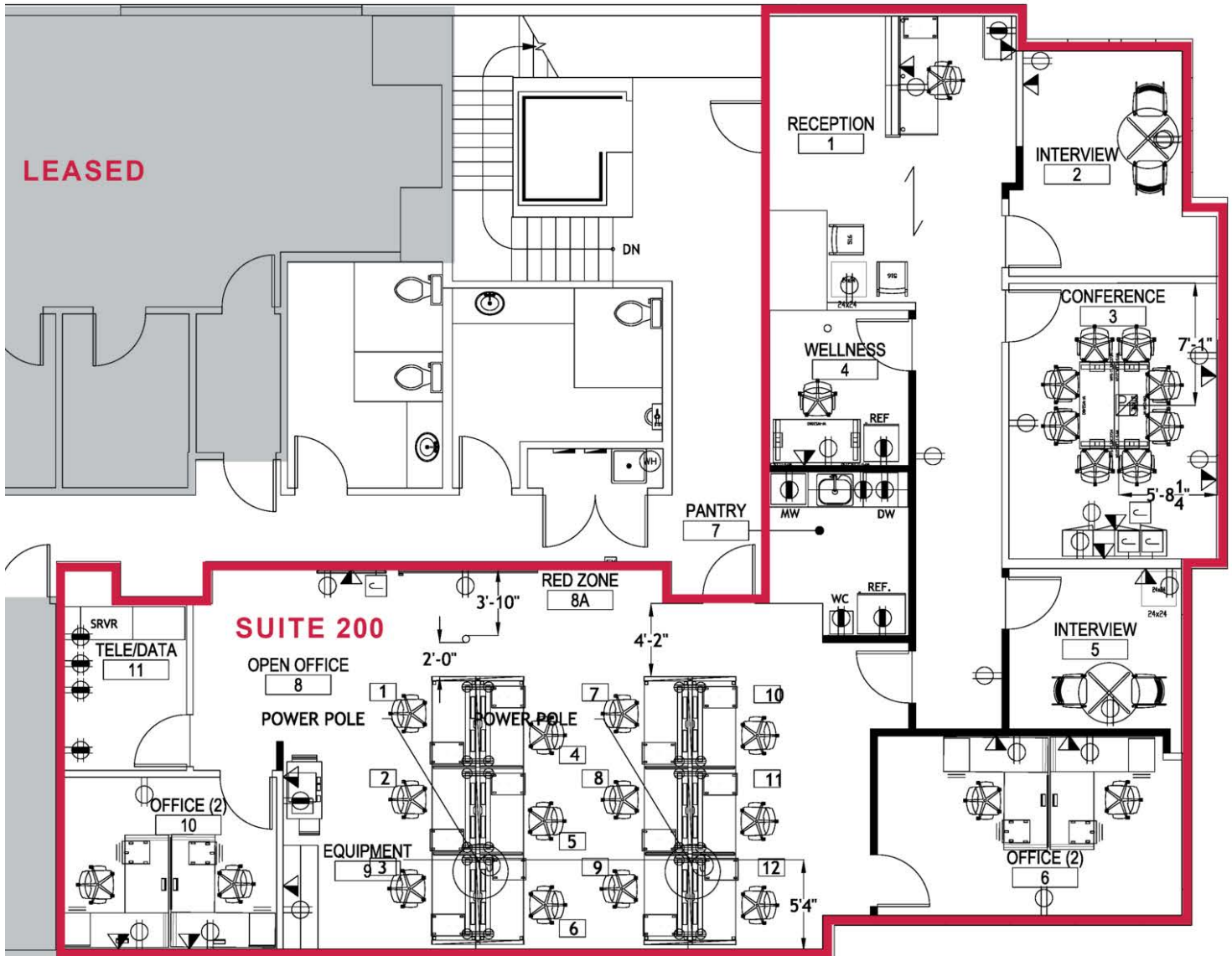
yhahn@lee-associates.com

D 253.238.0045

We obtained the information above from sources we believe to be reliable. However, we have not verified its accuracy and make no guarantee, warranty or representation about it. It is submitted subject to the possibility of errors, omissions, change of price, rental or other conditions, prior sale, lease or financing, or withdrawal without notice. We include projections, opinions, assumptions or estimates for example only, and they may not represent current or future performance of the property. You and your tax and legal advisors should conduct your own investigation of the property and transaction.

Retail/Office for Lease 1520 - DUPONT STATION

1520 Wilmington Dr, DuPont, WA 98327



CONTACT

Yeh-Hee Hahn

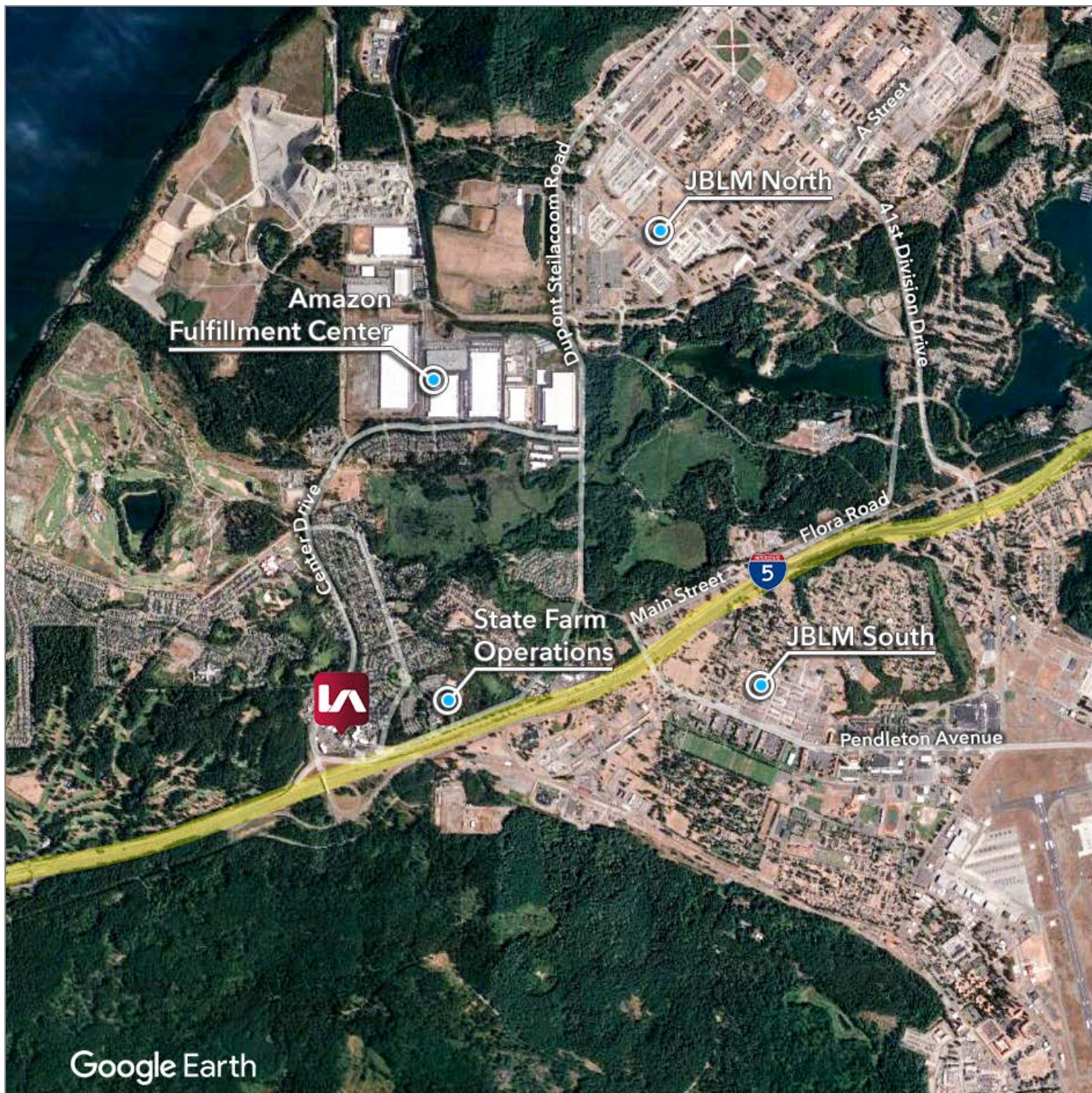
yhahn@lee-associates.com

D 253.238.0045

We obtained the information above from sources we believe to be reliable. However, we have not verified its accuracy and make no guarantee, warranty or representation about it. It is submitted subject to the possibility of errors, omissions, change of price, rental or other conditions, prior sale, lease or financing, or withdrawal without notice. We include projections, opinions, assumptions or estimates for example only, and they may not represent current or future performance of the property. You and your tax and legal advisors should conduct your own investigation of the property and transaction.

Retail/Office for Lease
1520 - DUPONT STATION

1520 Wilmington Dr, DuPont, WA 98327



CONTACT

Yeh-Hee Hahn

yhahn@lee-associates.com

D 253.238.0045

We obtained the information above from sources we believe to be reliable. However, we have not verified its accuracy and make no guarantee, warranty or representation about it. It is submitted subject to the possibility of errors, omissions, change of price, rental or other conditions, prior sale, lease or financing, or withdrawal without notice. We include projections, opinions, assumptions or estimates for example only, and they may not represent current or future performance of the property. You and your tax and legal advisors should conduct your own investigation of the property and transaction.