



812 SNEDIKER AVE BROOKLYN, NY 11207

**EXCLUSIVE
FOR LEASE**

~ 32,000 SF Modern 1-Story Warehouse



PROPERTY INFORMATION

| | |
|--------------|--|
| LOCATION | Off Stanley Ave & Snediker Ave |
| BLOCK / LOT | 3881 / 40 |
| AVAILABLE SF | 32,000 SF Warehouse <ul style="list-style-type: none"> • Ground Floor: 29,500 SF • Mezzanine: 2,500 SF |
| ZONING | M1-1 |
| FEATURES | <ul style="list-style-type: none"> • 18' Clear Ceiling Height • Large Space • Multiple Updated Offices • 1 Drive-in Door • Gypsum Roof • Gas Heat • Sprinklered |

► Lease Price Upon Request



For complete offering information or inspection, please contact exclusive broker:

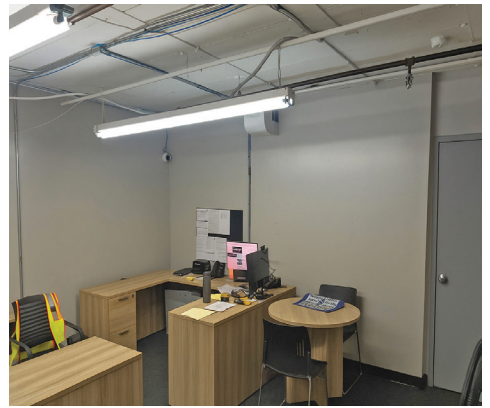
LEON LIPO
LLIPO@CTNYC.COM
646-942-4172



812 SNEDIKER AVE BROOKLYN, NY 11207

**EXCLUSIVE
FOR LEASE**

~ 32,000 SF Modern 1-Story Warehouse



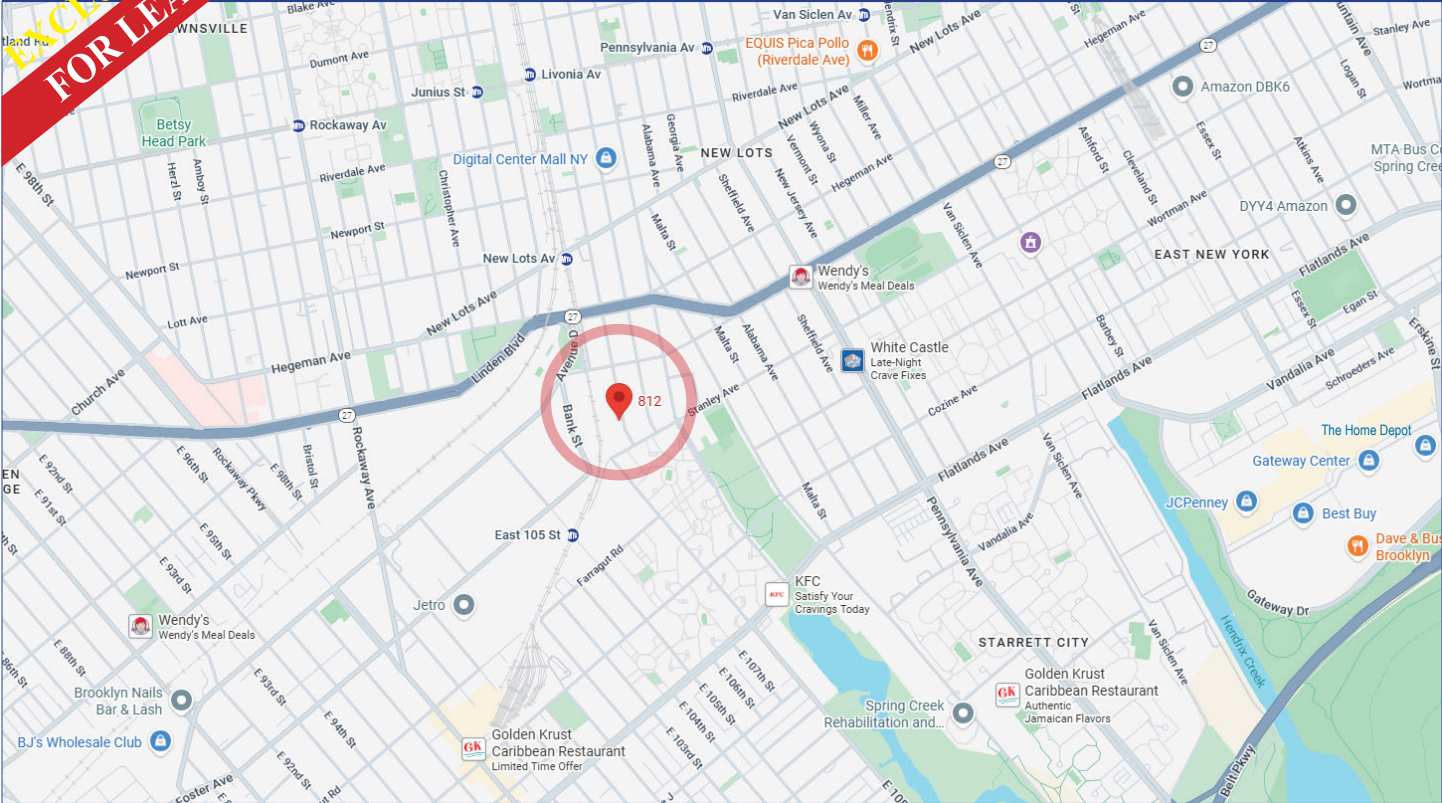
97-77 QUEENS BLVD SUITE 1120, REGO PARK, NY 11374 • 718-937-8100 • WWW.CTNYC.COM

All information is from sources deemed reliable and is submitted subject to errors, omission, changes of price or other conditions, prior to sale, rent, and withdrawal without notice.



812 SNEDIKER AVE BROOKLYN, NY 11207

EXCLUSIVE FOR LEASE ~ **32,000 SF** Modern 1-Story Warehouse



TRANSPORTATION

TRANSIT/SUBWAY

| | | | |
|---------------------------|---------|-------------|--------|
| New Lots Avenue (L Line) | MTA L | 7 min walk | 0.4 mi |
| East 105 Street | MTA L | 9 min walk | 0.8 mi |
| Livonia Avenue | MTA L | 14 min walk | 0.9 mi |
| Junius Street | MTA 3 4 | 15 min walk | 0.8 mi |
| Canarsie-Rockaway Parkway | MTA L | 19 min walk | 1.1 mi |

E 108 St/Stanley Av

Bus stop

B60

3 min (0.1 mile)

