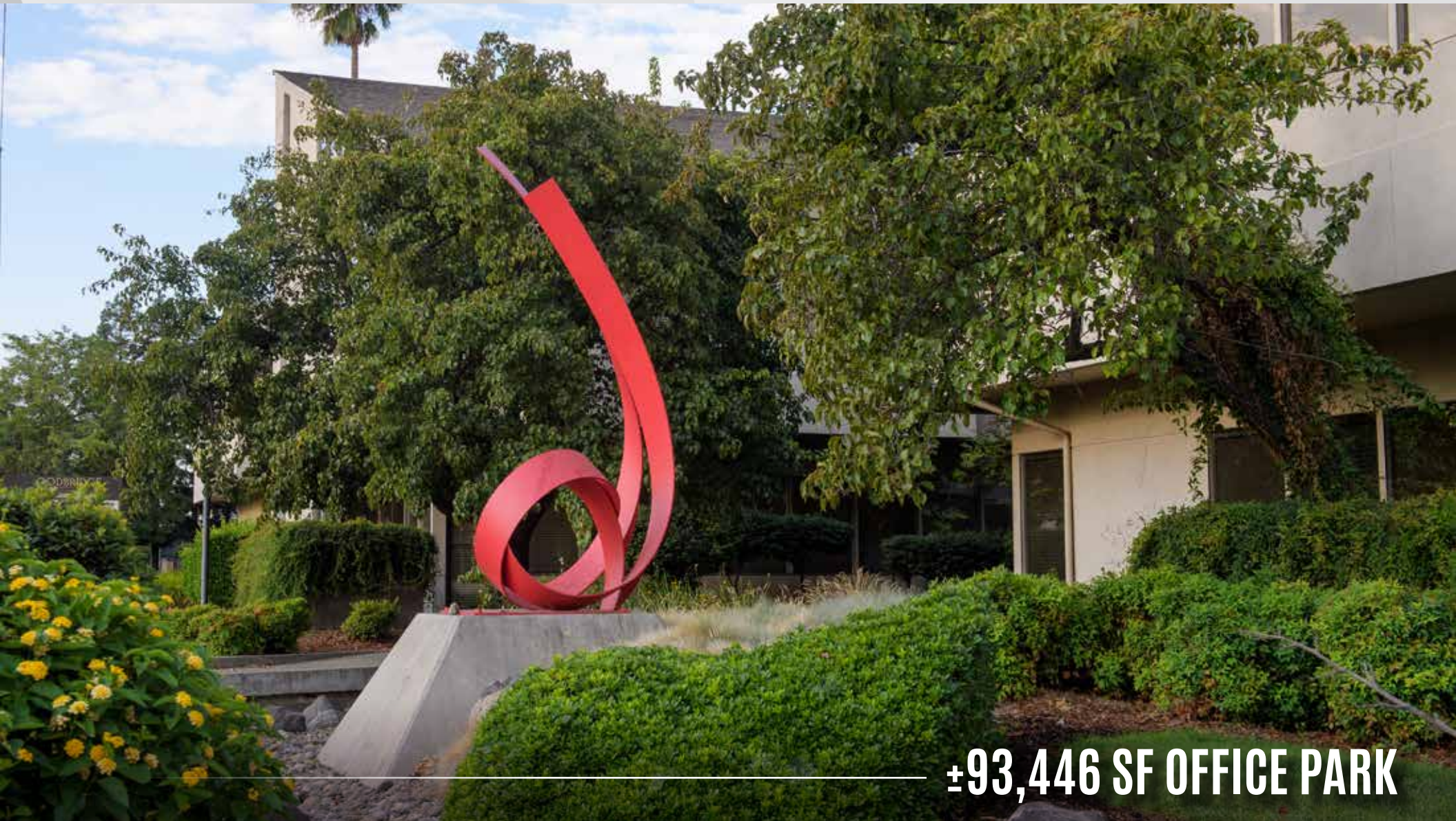


# 1321 - 1337

HOWE AVENUE, SACRAMENTO

**WOODBIDGE**  
OFFICE PARK



**±93,446 SF OFFICE PARK**

**NEWMARK**

**DAN CHAMBERLAIN**

916-569-2382  
dan.chamberlain@nrmk.com  
CA RE License #00837352

**JOHN ROTH**

530-277-3742  
john.roth@nrmk.com  
CA RE License #01896375

1321 - 1337  
HOWE AVENUE, SACRAMENTO

WOODBIDGE  
OFFICE PARK



1321 - 1337 HOWE AVENUE // SACRAMENTO

# I321 - I337

HOWE AVENUE, SACRAMENTO

## PROPERTY HIGHLIGHTS

- On-site property management and ownership
- Beautiful park-like environment
- Approximately 5 minute access to Highways 80 & 50
- Amenity rich location
- Monument and digital signage on Howe Avenue
- 2 common conference rooms
- On-site workout facility
- 24-hour on-call security services
- Enhanced security camera system
- Parking: 7 per 1,000 SF parking ratio
- Architectural lofts
- Asking rates range from \$1.33 - \$1.65 PSF

WOODBIDGE  
OFFICE PARK



# 1321 - 1337

HOWE AVENUE, SACRAMENTO

**WOODBIDGE**  
OFFICE PARK



1321 - 1337 HOWE AVENUE // SACRAMENTO

# WOODBRIDGE

OFFICE PARK

BUILDING  
**2**  
1325

BUILDING  
**3**  
1329

BUILDING  
**4**  
1333

BUILDING  
**1**  
1321

BUILDING  
**5**  
1337



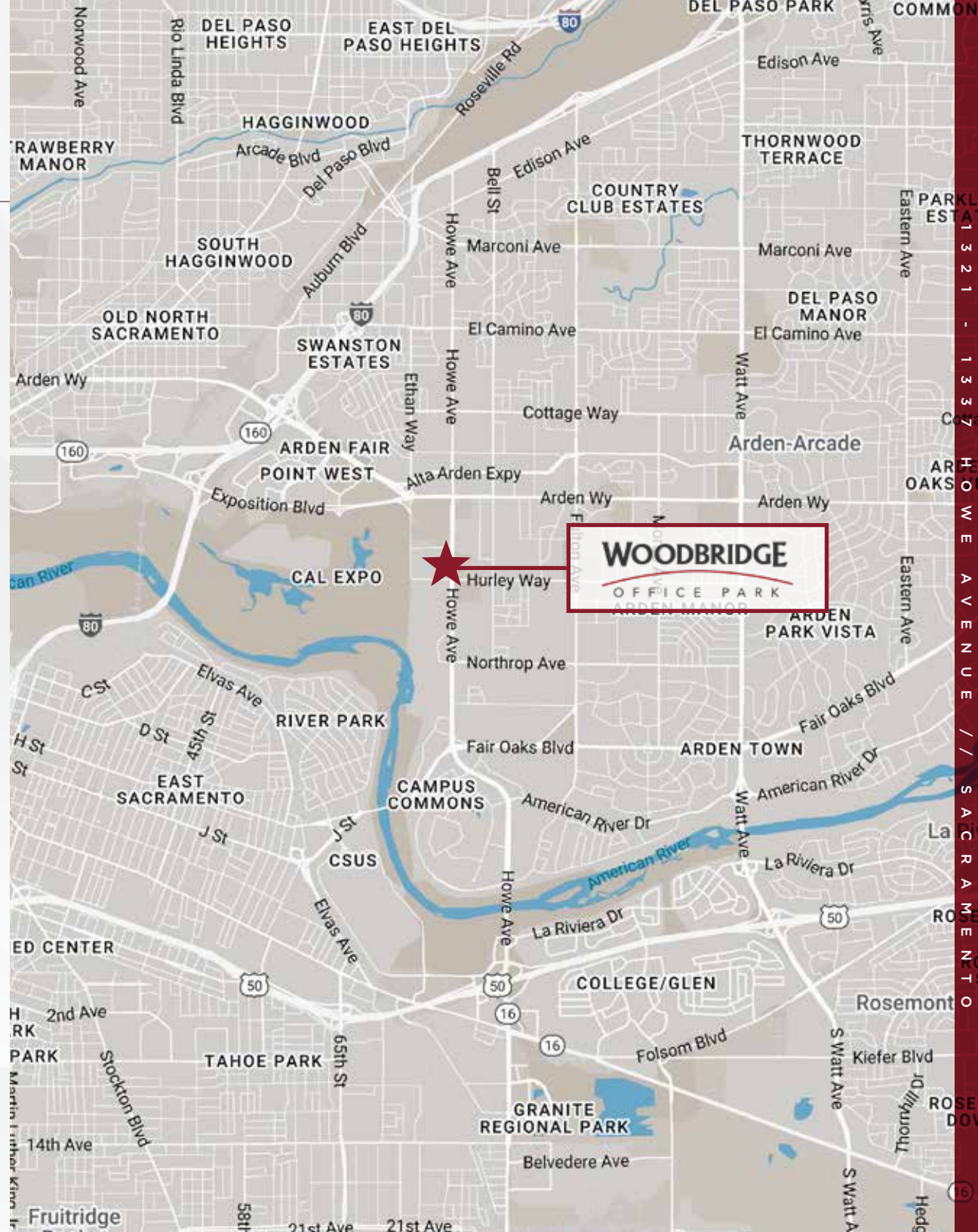
HOWE AVENUE

# 1321 - 1337

HOWE AVENUE, SACRAMENTO

## LOCATION MAP

5 MINUTE DRIVE TO  
HIGHWAYS 80 OR 50



# NEARBY AMENITIES

ARDEN FAIR MALL

NORDSTROM  
**Rack** Burlington

FISH GRILL California **jamba**

The Container Store Starbucks

Applebee's GRILL + BAR KURA

CINEMARK PETE'S RESTAURANT & BREWERY

Bonchon

HOWE 'BOUT ARDEN SHOPPING CENTER



Total Wine & More



ARIGATO SUSHI



LOS RIOS POLICE DEPARTMENT



SACRAMENTO COUNTY SHERIFF'S OFFICE

PARIS BAGUETTE



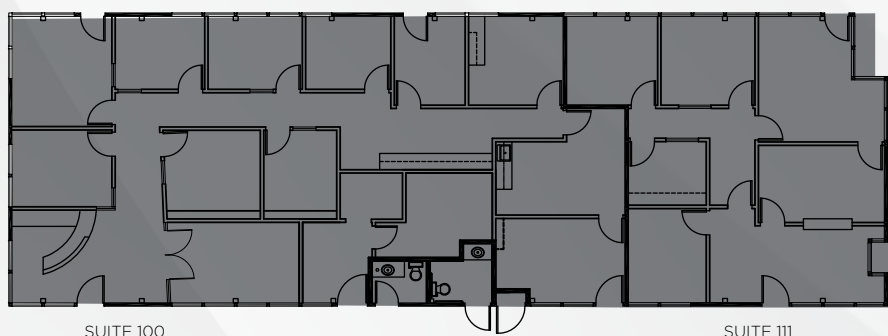
NEWMARK



**BUILDING**  
**1**

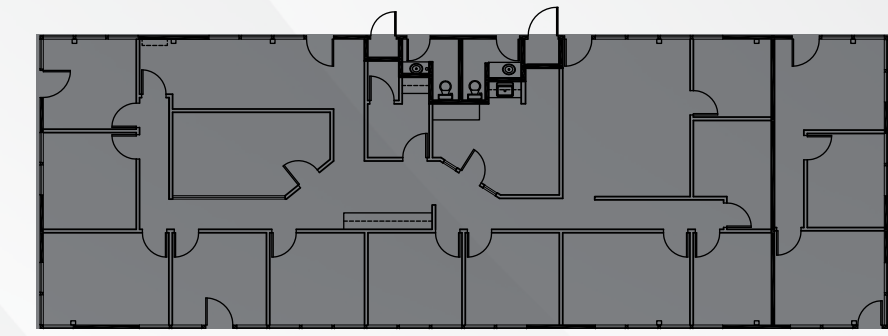
**1321** HOWE AVENUE  
**FLOOR PLANS**

**FIRST FLOOR**



SUITE 100

SUITE 111

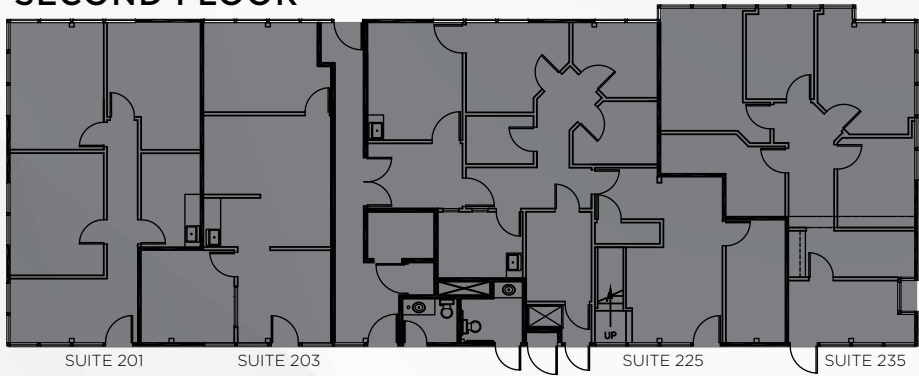


SUITE 113

SUITE 112

**AVAILABLE**  
 **LEASED**

**SECOND FLOOR**

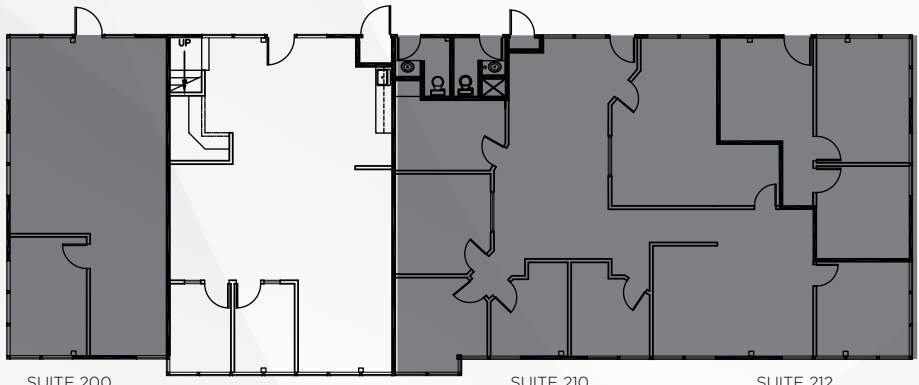


SUITE 201

SUITE 203

SUITE 225

SUITE 235

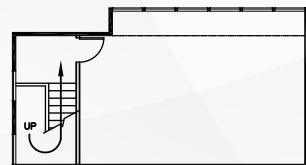


SUITE 200

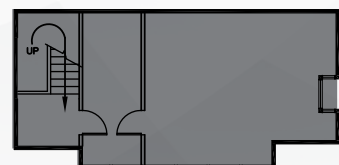
**SUITE 202**  
**1,987 RSF**

SUITE 210

SUITE 212



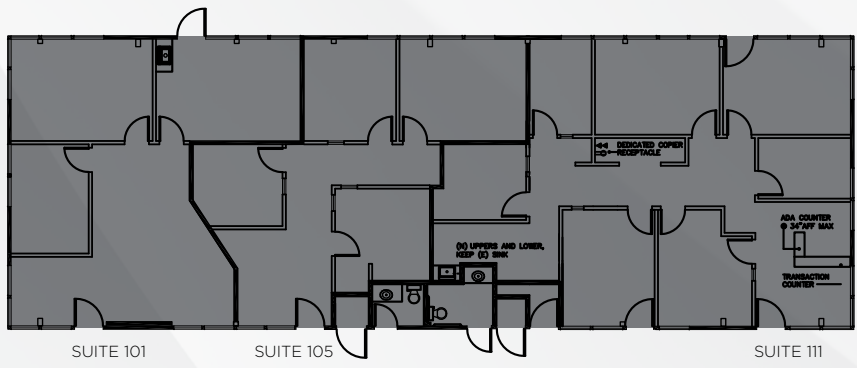
**SUITE 202**  
**MEZZANINE**



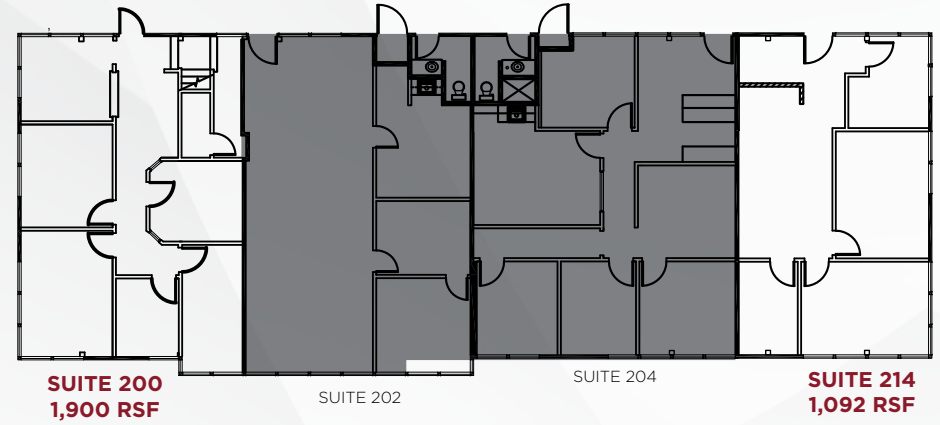
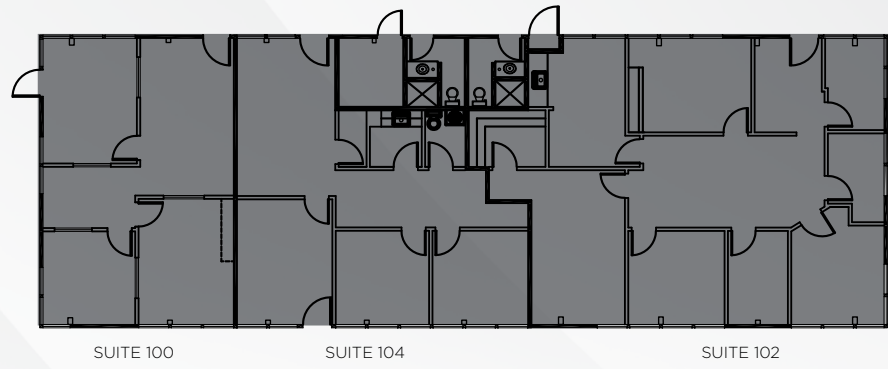
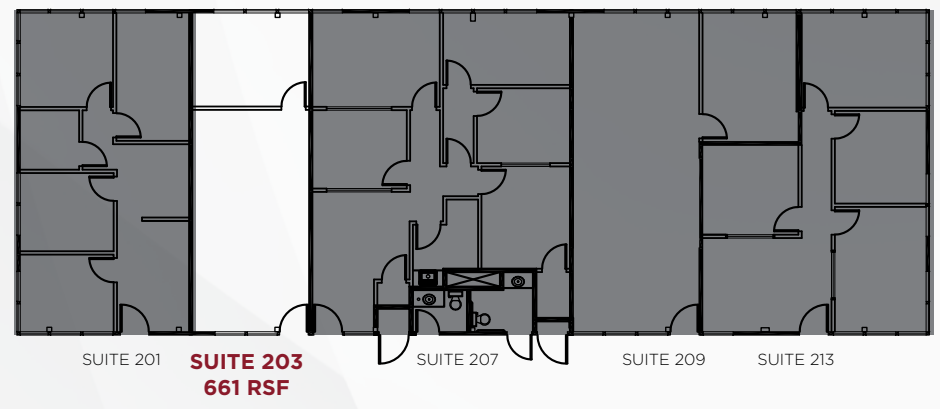
SUITE 225  
MEZZANINE



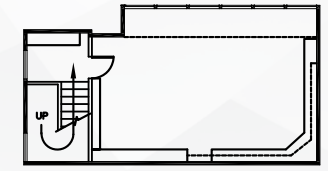
**FIRST FLOOR**



**SECOND FLOOR**



□ **AVAILABLE**  
■ **LEASED**

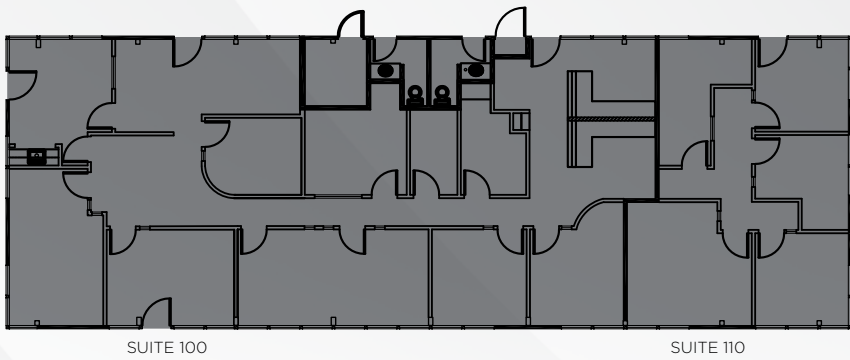
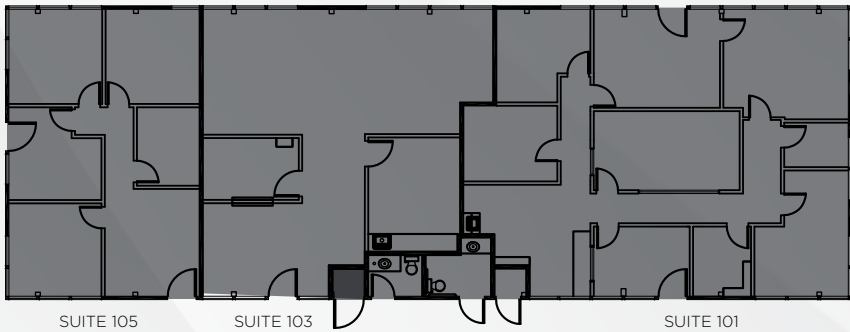


**SUITE 200**  
**MEZZANINE**

BUILDING **3**

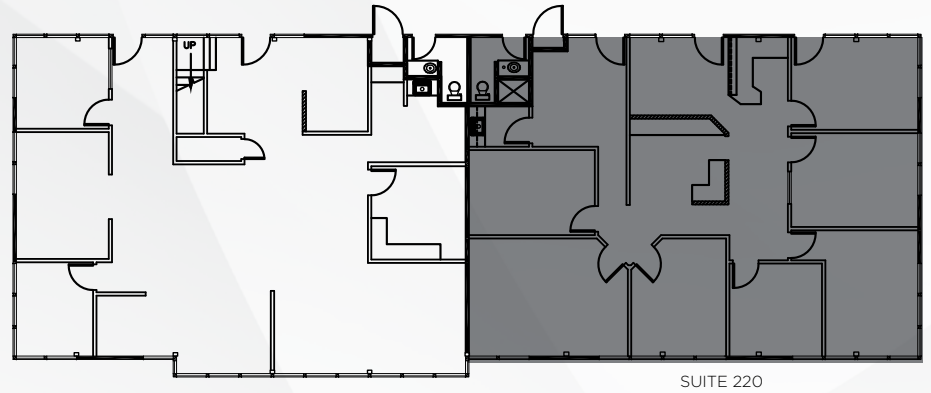
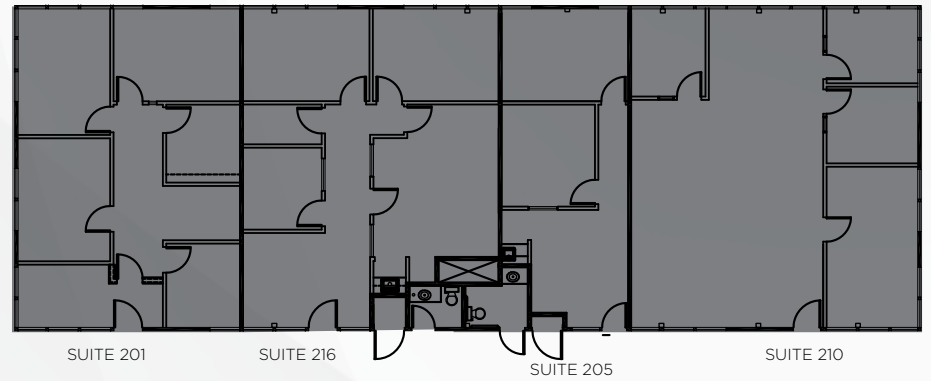
**1329** HOWE AVENUE  
FLOOR PLANS

FIRST FLOOR

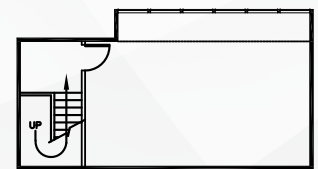


- AVAILABLE
- LEASED

SECOND FLOOR



**SUITES 200 & 202**  
3,226 RSF

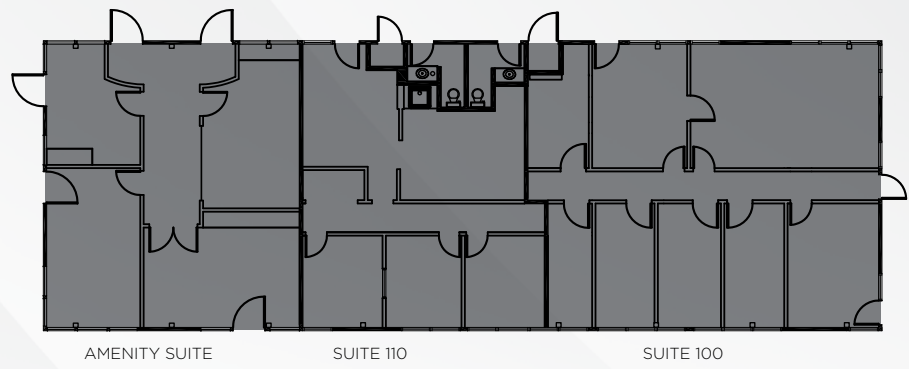
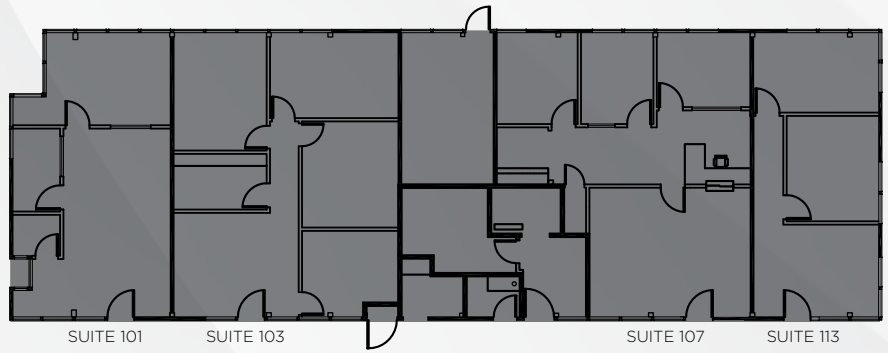


SUITE 200 & 202  
MEZZANINE

**BUILDING**  
**4**

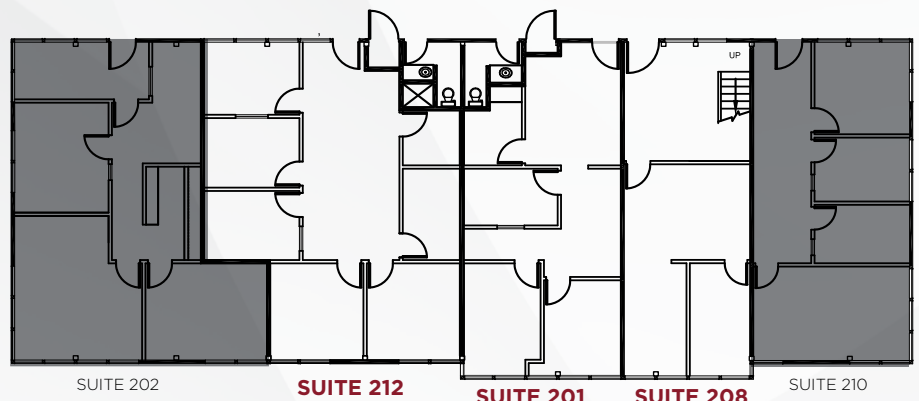
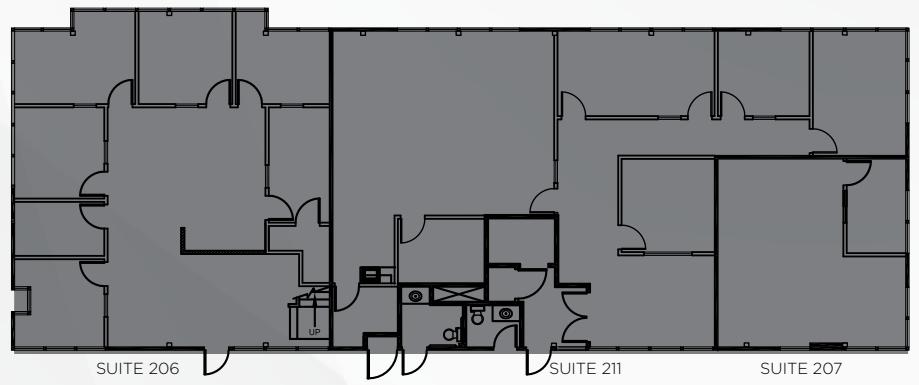
**1333** HOWE AVENUE  
**FLOOR PLANS**

**FIRST FLOOR**



□ **AVAILABLE**  
■ **LEASED**

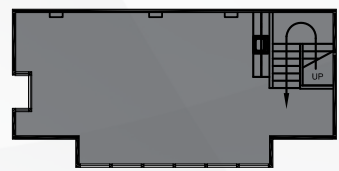
**SECOND FLOOR**



**SUITE 212**  
**1,200 RSF**

**SUITE 201**  
**912 RSF**

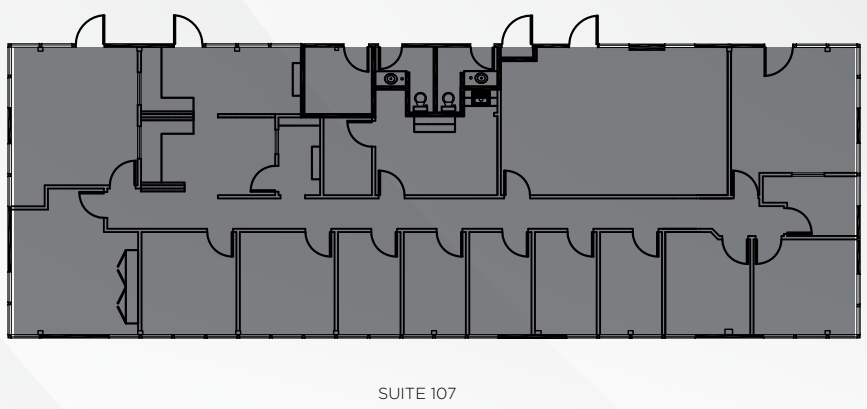
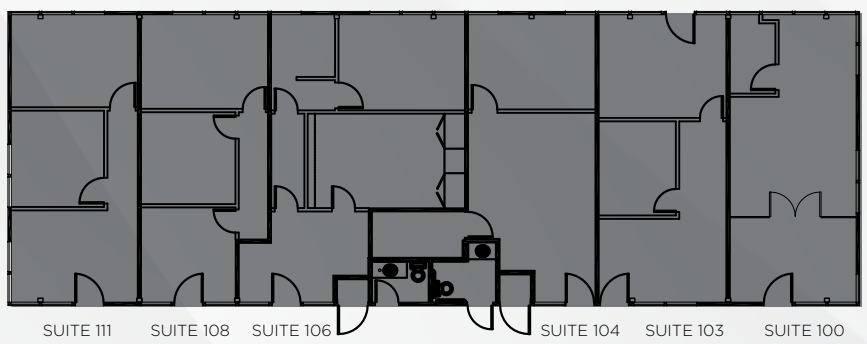
**SUITE 208**  
**1,496 RSF**



**BUILDING**  
**5**

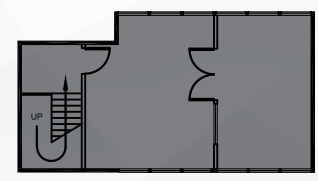
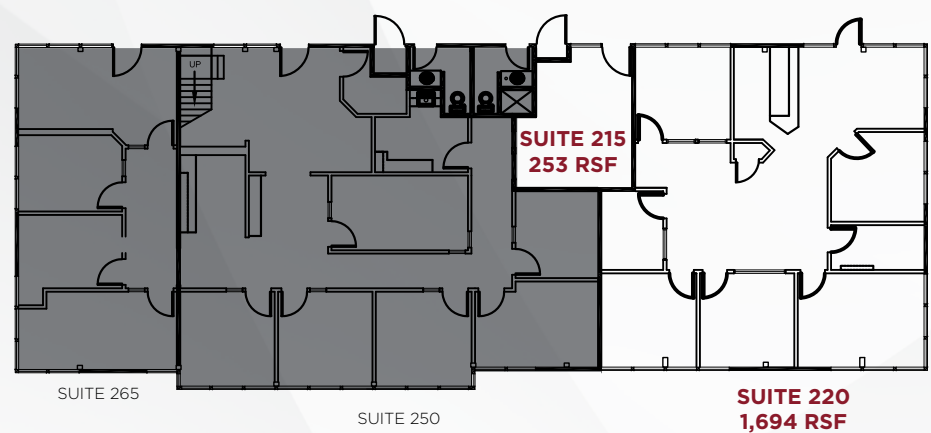
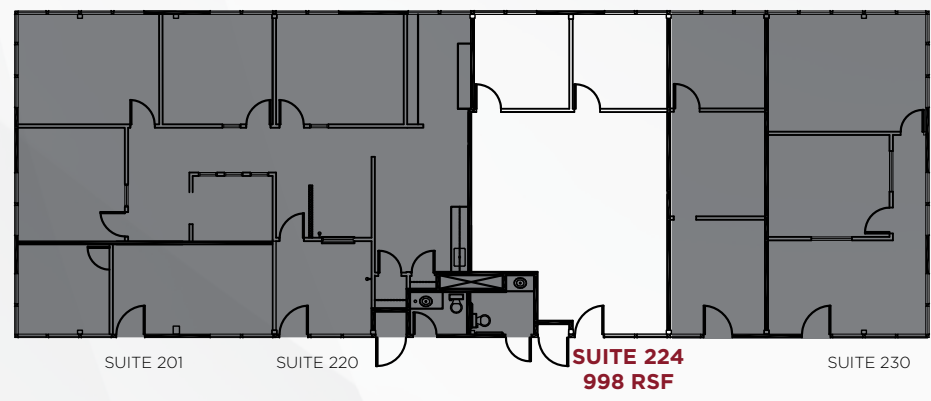
**1337** HOWE AVENUE  
**FLOOR PLANS**

**FIRST FLOOR**



□ **AVAILABLE**  
■ **LEASED**

**SECOND FLOOR**



**I321 - I337**  
HOWE AVENUE, SACRAMENTO

**WOODBIDGE**  
OFFICE PARK



The distributor of this communication is performing acts for which a real estate license is required. The information contained herein has been obtained from sources deemed reliable but has not been verified and no guarantee, warranty or representation, either express or implied, is made with respect to such information. Terms of sale or lease and availability are subject to change or withdrawal without notice.MP-1514.12/25

**NEWMARK**

**DAN CHAMBERLAIN**  
916-569-2382  
dan.chamberlain@nrmk.com  
CA RE License #00837352

**JOHN ROTH**  
530-277-3742  
john.roth@nrmk.com  
CA RE License #01896375