

J.R. Parrish Inc.
COMMERCIAL REAL ESTATE

jrparrish.com

MAIN OFFICE
831.476.2222
FAX
831.464.5818

2959 Park Avenue
Suite E
Soquel, CA 95073

FOR MORE INFORMATION
CONTACT EXCLUSIVE
LISTING AGENT

Matt Shelton
831.247.1510
matt@jrparrish.com
DRE# 00879054

Rachael Shelton
831.588.8383
rachael@jrparrish.com
DRE# 01916810

FOR SALE

DOWNTOWN MID CENTURY OFFICE BUILDING

Price reduced
~~\$1,089,000.00~~
\$995,000.00



777 CHESTNUT STREET • SANTA CRUZ, CA

PROPERTY FEATURES

- 1,363 ± SF / divisible
- Land area ± 5,401 SF
- Centrally located Downtown Santa Cruz Office Building
- Dedicated 5 space parking lot

- Four privates with windows / sliding glass doors
- Zoning is PA
- Possible partial residential use
- Excellent Owner/User Site

Listed for \$995,000.00

J.R. Parrish Inc.
COMMERCIAL REAL ESTATE

jrparish.com

MAIN OFFICE
831.476.2222
FAX
831.464.5818

2959 Park Avenue
Suite E
Soquel, CA 95073

PHOTOS



JR PARRISH COMMERCIAL REAL ESTATE • jrparish.com



COMMERCIAL REAL ESTATE

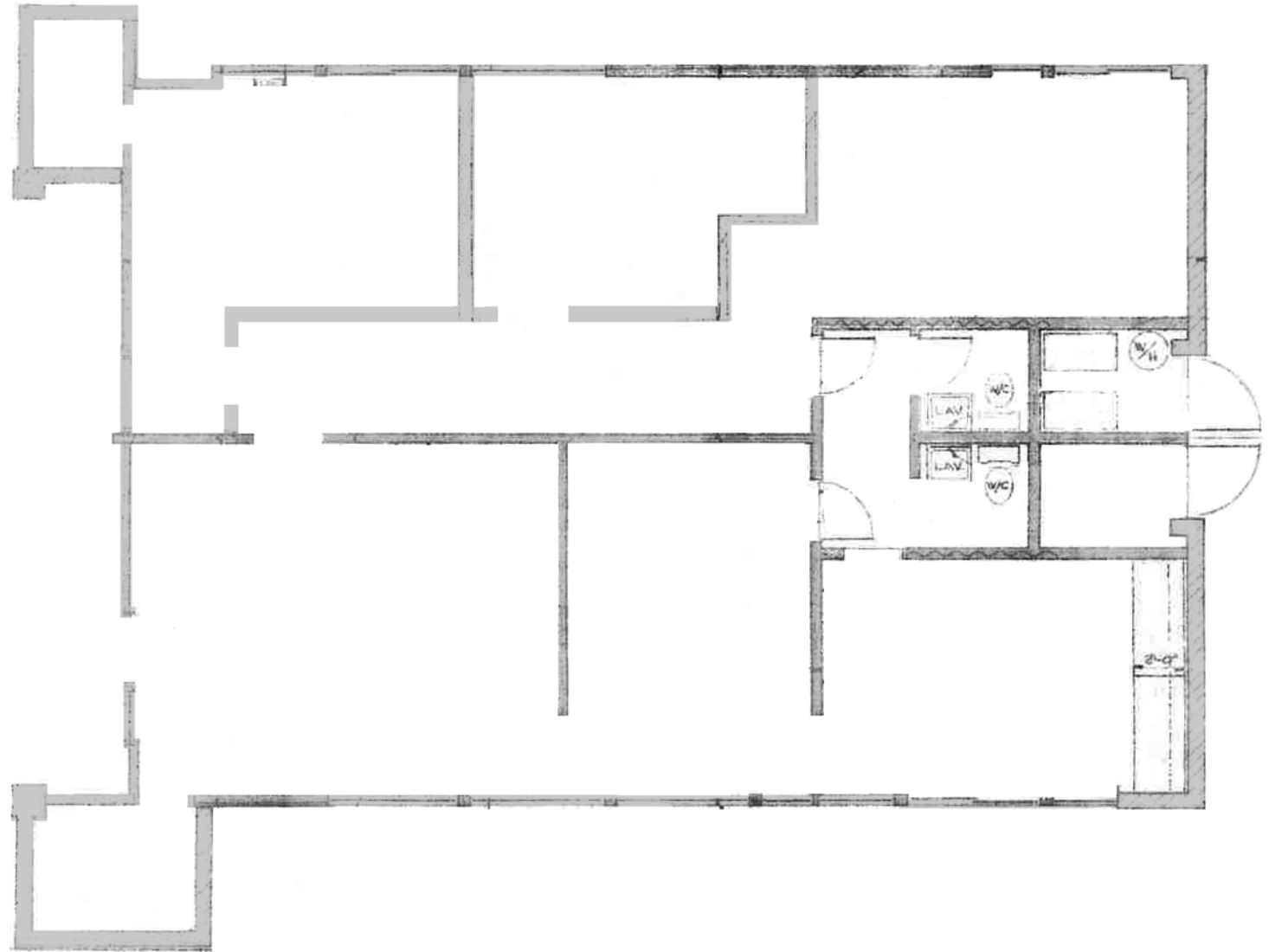
jrparish.com

MAIN OFFICE
831.476.2222

FAX
831.464.5818

2959 Park Avenue
Suite E
Soquel, CA 95073

FLOORPLAN





COMMERCIAL REAL ESTATE

jrparish.com

MAIN OFFICE
831.476.2222
FAX
831.464.5818

2959 Park Avenue
Suite E
Soquel, CA 95073

FOR MORE INFORMATION
CONTACT EXCLUSIVE
LISTING AGENT

Matt Shelton
831.247.1510
matt@jrparish.com
DRE# 00879054

Rachael Shelton
831.588.8383
rachael@jrparish.com
DRE# 01916810

MAP

