

4302 W 89th Street

Russell Industrial Park

Davenport, Iowa 52806
www.cbre.com/desmoines



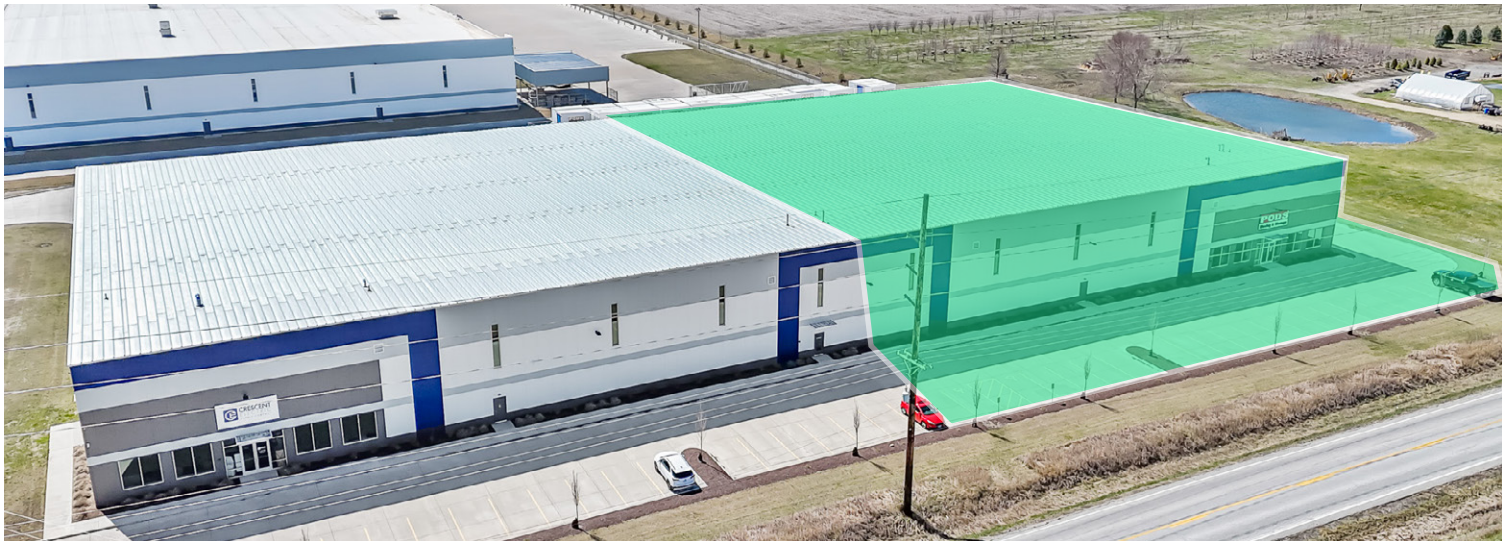
Building Features

Welcome to Russell Industrial Park, the Quad Cities' newest and most advanced industrial park, located at 4302 W 89th Street, Davenport, Iowa 52806. This prime location offers excellent access to Interstate 80, making it ideal for businesses seeking efficient logistics and transportation solutions.

- + Available Space:
 - Suite 100: 40,000 SF
- + Sublease Rate:
 - Call Broker for Pricing
- + Built in 2023
- + Lease Expires 2029
- + Property Details
 - 1,632 SF of Office
 - 38,368 SF of Warehouse
 - Clear Height: 28'
 - 1 Drive Through Door
 - Outdoor Storage Available

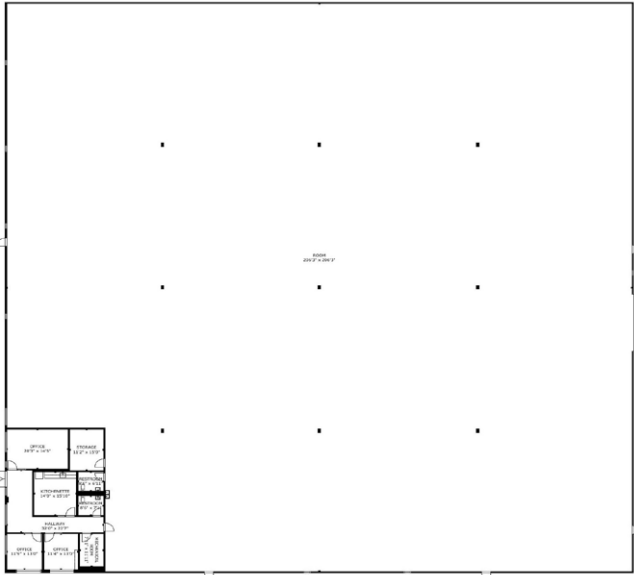
4302 W 89th Street
Davenport, Iowa

For Sublease



4302 W 89th Street
Davenport, Iowa

For Sublease



GROSS INTERNAL AREA
TOTAL 42,639 sq ft
FLOOR 1: 42,639 sq ft
SIZE AND DIMENSIONS ARE APPROXIMATE, ACTUAL MAY VARY



[Click to view virtual tour](#)



4302 W 89th Street
Davenport, Iowa

For Sublease



Contact Us

Ajdin Nadarevic

Senior Vice President

+1 515 415 6114

ajdin.nadarevic@cbre.com

Licensed in the State of Iowa

Ben Probst

Senior Associate

+1 515 326 1985

ben.probst@cbre.com

Licensed in the State of Iowa

© 2025 CBRE, Inc. All rights reserved. This information has been obtained from sources believed reliable, but has not been verified for accuracy or completeness. You should conduct a careful, independent investigation of the property and verify all information. Any reliance on this information is solely at your own risk. CBRE and the CBRE logo are service marks of CBRE, Inc. All other marks displayed on this document are the property of their respective owners, and the use of such logos does not imply any affiliation with or endorsement of CBRE. Photos herein are the property of their respective owners. Use of these images without the express written consent of the owner is prohibited.

CBRE