

# VILLAGE GREEN WEST

Nº 245 W 14TH STREET

# PRIME RETAIL

BETWEEN 7TH & 8TH AVENUES



## AVAILABLE

GRD 3,964 SF

BSMT 354 SF

## RENT

UPON REQUEST

## POSSESSION

IMMEDIATE

## FRONTAGE

38 FEET

## CEILING HTS

12 FEET

## CONTACT

MATTHEW NAMER  
Matt@alfadm.com  
646.246.8504

PENELOPE VOSS  
Penelope@alfadm.com  
212.206.7820

**FEATURES** NEW CONSTRUCTION ■ HIGH CEILINGS ■  
ARCHITECTURAL DETAILS ■ STORAGE/OFFICE ■ DRY USE

**NEIGHBORS** HSBC ■ TD BANK ■ BANK OF AMERICA ■  
CHASE ■ BARNEYS NY ■ PAPER SOURCE ■ APPLE ■ SOREL

MASS TRANSIT: WALKING DISTANCE TO **LACE 123**

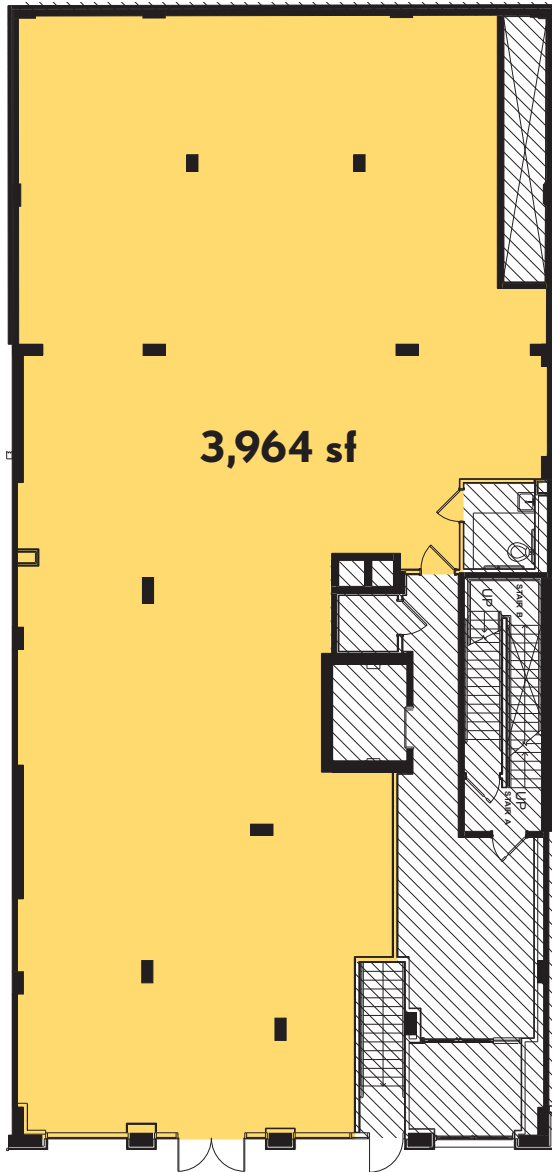
# VILLAGE GREEN WEST

Nº 245 W 14TH STREET

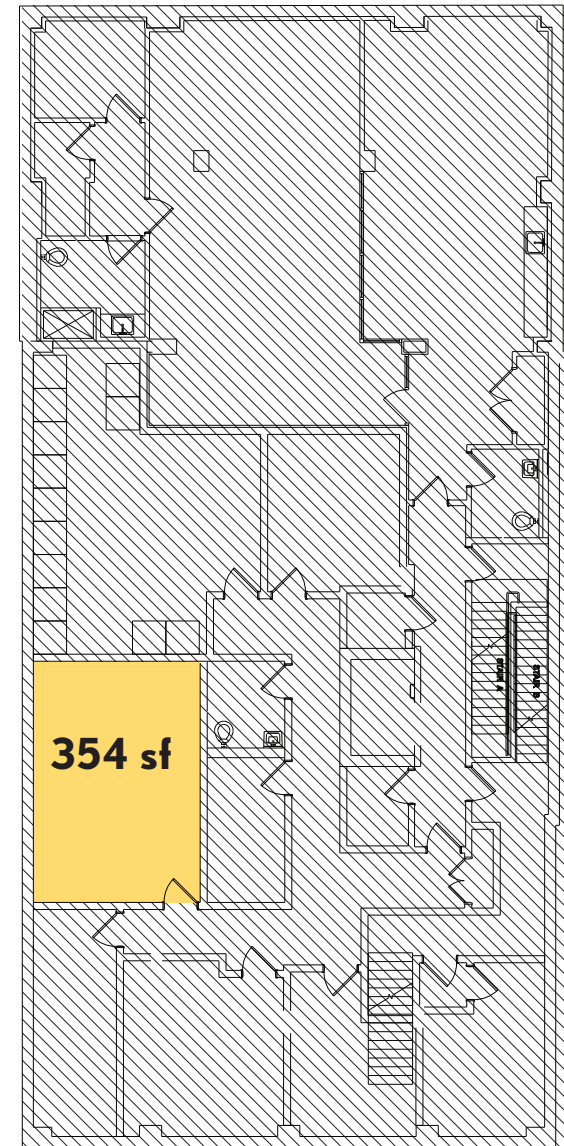
# PRIME RETAIL

BETWEEN 7TH & 8TH AVENUES

## FLOOR PLANS



GROUND  
FLOOR



BASEMENT  
STORAGE

MATTHEW NAMER  
Matt@alfadm.com  
646.246.8504

PENELOPE VOSS  
Penelope@alfadm.com  
212.206.7820