

FOR LEASE

4616 MAYHEW ROAD

*±2 Acre Graveled Yard Available
For Lease*

Immediate occupancy

Premises Up to ±2 acres of land

Graveled yard

Fenced and gated

Zoned M-1 Sacramento County

Well Water on-site

Ideal contractors yard or storage yard

APN 063-0020-050

BILL NIETHAMMER

916.751.3639 | bill.niethammer@kidder.com

LIC N° 00925770

JACK NIETHAMMER

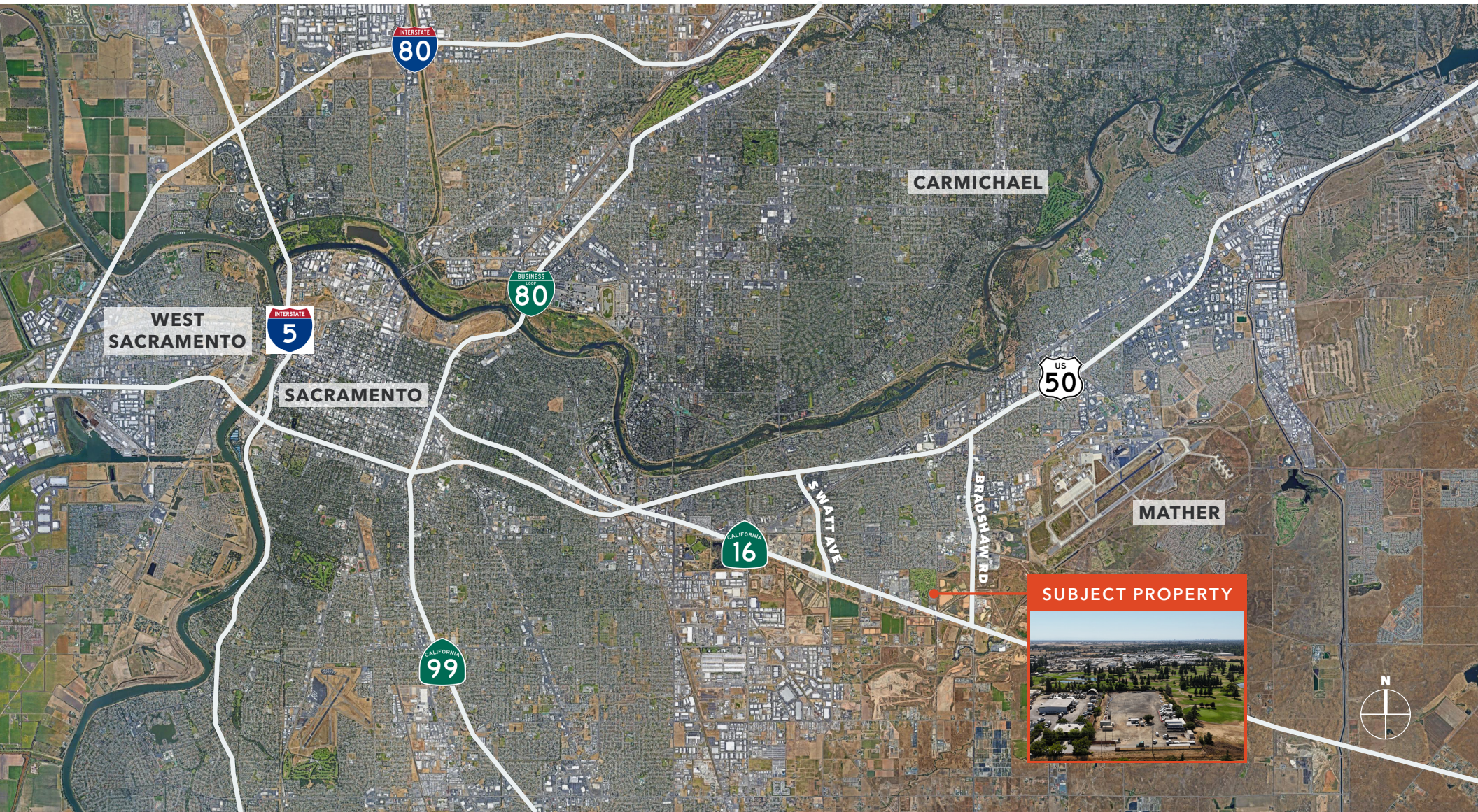
916.607.6101 | jack.niethammer@kidder.com

LIC N° 02205255

KIDDER.COM

This information supplied herein is from sources we deem reliable. It is provided without any representation, warranty, or guarantee, expressed or implied as to its accuracy. Prospective Buyer or Tenant should conduct an independent investigation and verification of all matters deemed to be material, including, but not limited to, statements of income and expenses. Consult your attorney, accountant, or other professional advisor. All Kidder Mathews designs are the sole property of Kidder Mathews. Branded materials and layouts are not authorized for use by any other firm or person.





KIDDER.COM

This information supplied herein is from sources we deem reliable. It is provided without any representation, warranty, or guarantee, expressed or implied as to its accuracy. Prospective Buyer or Tenant should conduct an independent investigation and verification of all matters deemed to be material, including, but not limited to, statements of income and expenses. Consult your attorney, accountant, or other professional advisor. All Kidder Mathews designs are the sole property of Kidder Mathews. Branded materials and layouts are not authorized for use by any other firm or person.