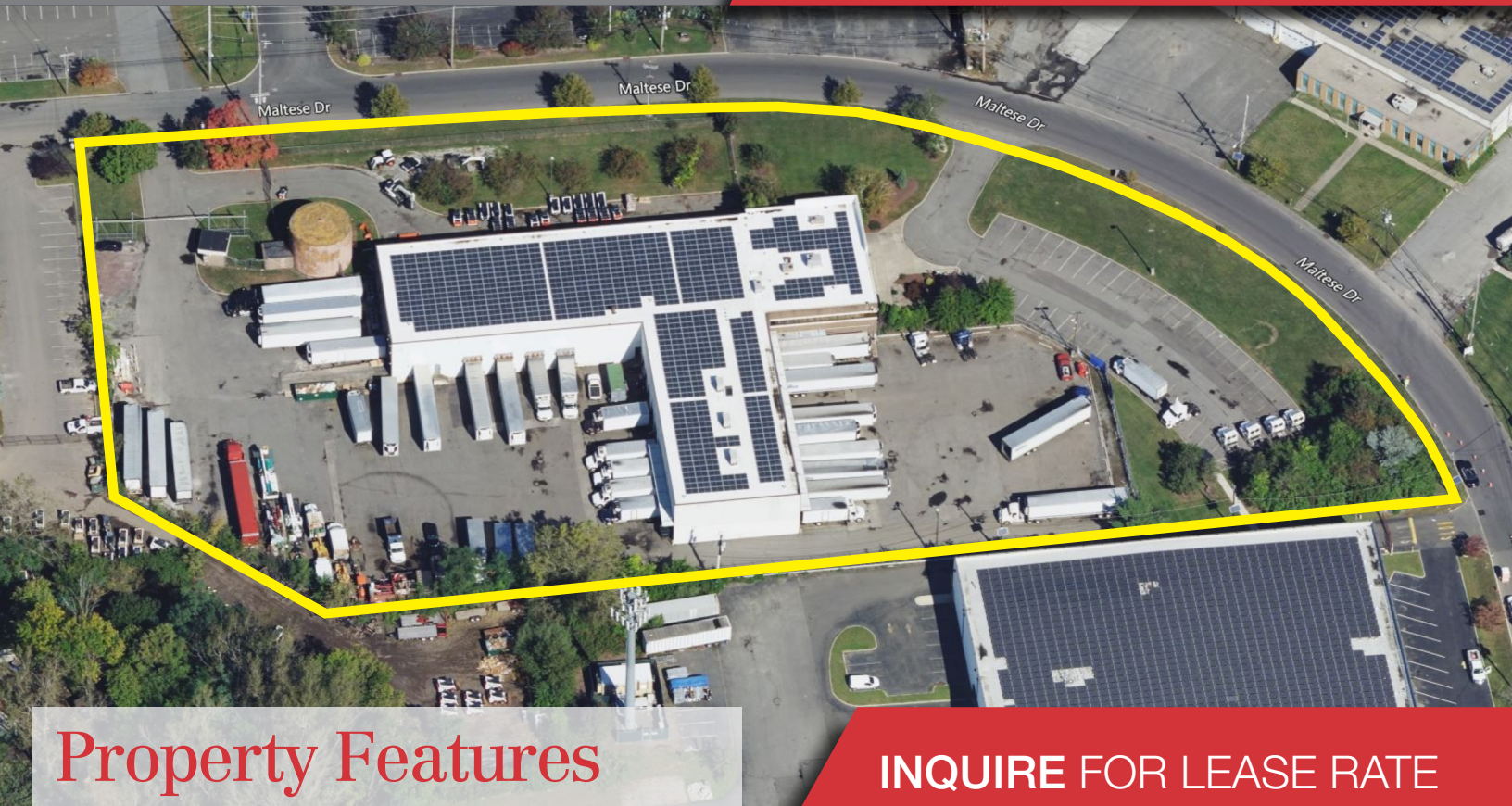


**FOR LEASE**  
**INDUSTRIAL**  
30,959 SF on 4.6 ACRES

**111** **MALTESE**  
**DRIVE**  
**TOTOWA**



## Property Features

- 30,959 SF Industrial/Flex Building on 4.6 Acres
- 23' Ceiling Height
- 26 Tailgates
- One (1) Drive-In
- 43 Auto Parking Spaces
- Excess Trailer Parking Space
- Sprinklers: Wet
- Office Space with Air-Conditioning
- Construction Underway
- Zoning: I-3
- Easy Access to Routes 80, 23, and US-46
- **AVAILABLE: Q4 2024**

**INQUIRE FOR LEASE RATE**

### For more information






**Scott K. Perkins, SIOR, CCIM**  
Senior Vice President  
201 488 5800 x156  
sperkins@naihanson.com

**Christopher D. Todd, SIOR**  
Managing Director, Institutional Svcs  
201 488 5800 x117  
ctodd@naihanson.com

**William Ericksen, CCIM**  
Associate Vice President  
201 488 5800 x133  
wericksen@naihanson.com

**Kristen Costanza, Associate**  
201 488 5800 x172  
kcostanza@naihanson.com

**NAI James E. Hanson**  
COMMERCIAL REAL ESTATE SERVICES, WORLDWIDE

FOLLOW US!      | NJ Offices: Teterboro | Parsippany | [naihanson.com](http://naihanson.com) | Member of NAI Global with +325 Offices Worldwide

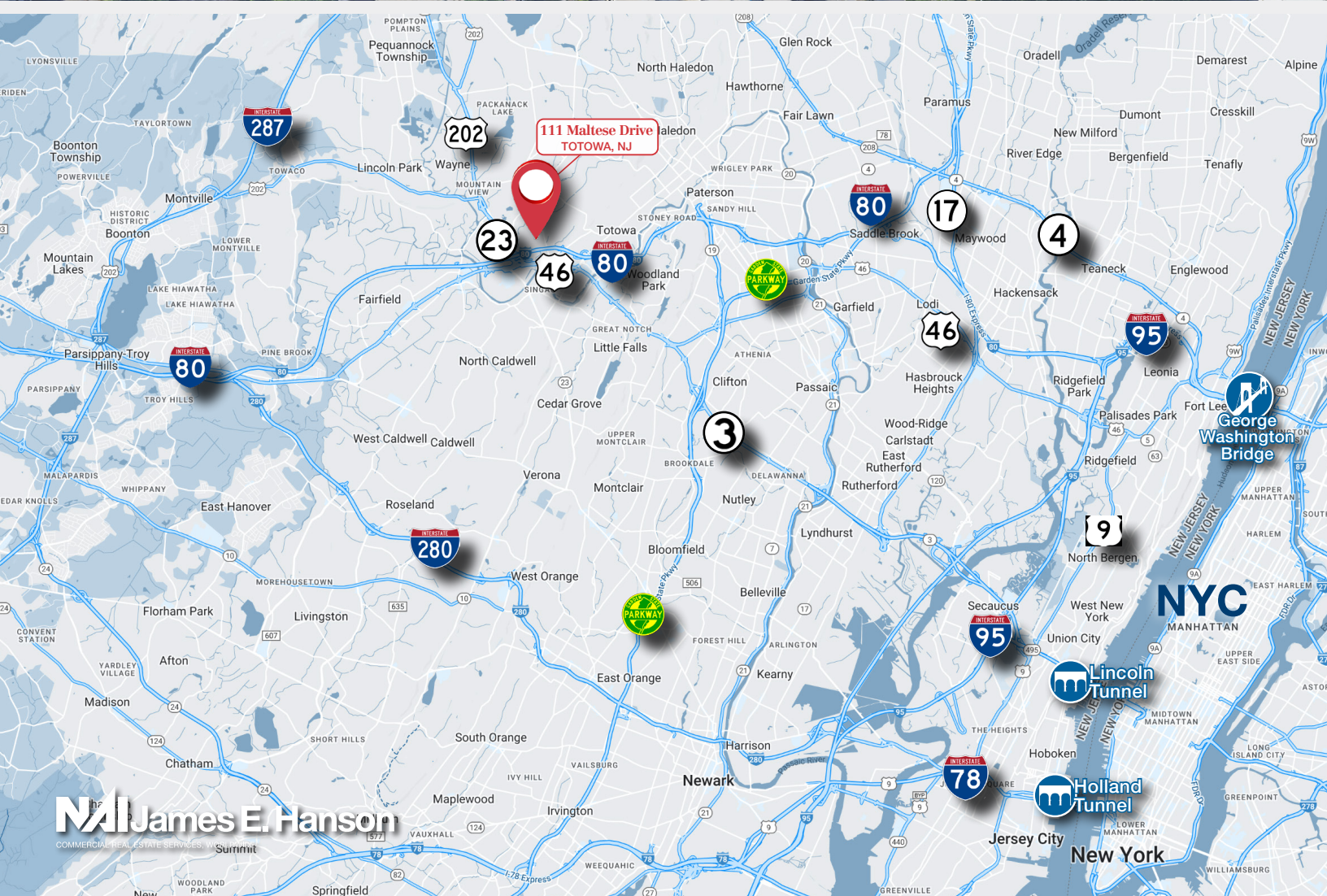
#### SERVICES OFFERED

Brokerage • Property Management • Corporate Services • Financing • Logistics • Government Services • Healthcare • Tenant Representation • Cold Storage • Investment Services

The information contained herein has been obtained from sources considered to be reliable, but no guarantee of its accuracy is made by NAI James E. Hanson

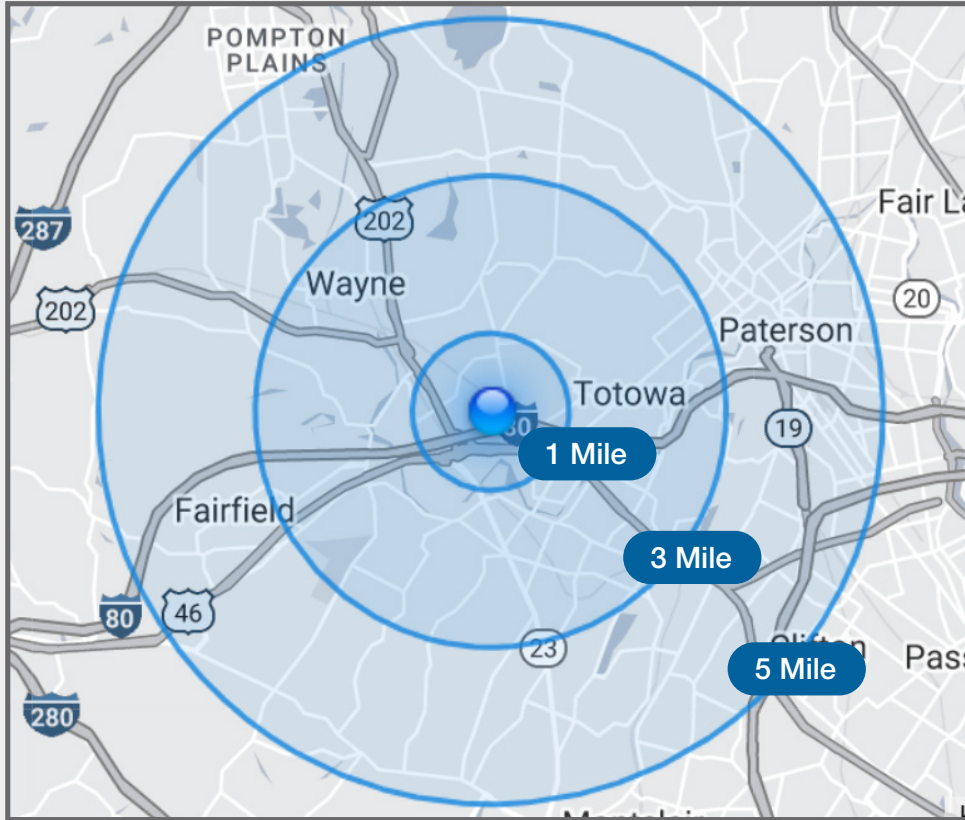
# AERIAL VIEW & HIGHWAY MAP

# 111 MALTESE DRIVE TOTOWA



# DEMOGRAPHICS MAP & REPORT

# 111 MALTESE DRIVE TOTOWA



| Demographics              | 1 Mile    | 3 Mile    | 5 Mile    |
|---------------------------|-----------|-----------|-----------|
| Total Population          | 3,026     | 84,952    | 285,429   |
| Median Age of Householder | 43        | 42        | 41        |
| Average Household Income  | \$123,900 | \$153,512 | \$141,611 |