

Westmark Plaza

URBANDALE | IOWA



PROPERTY FEATURES:

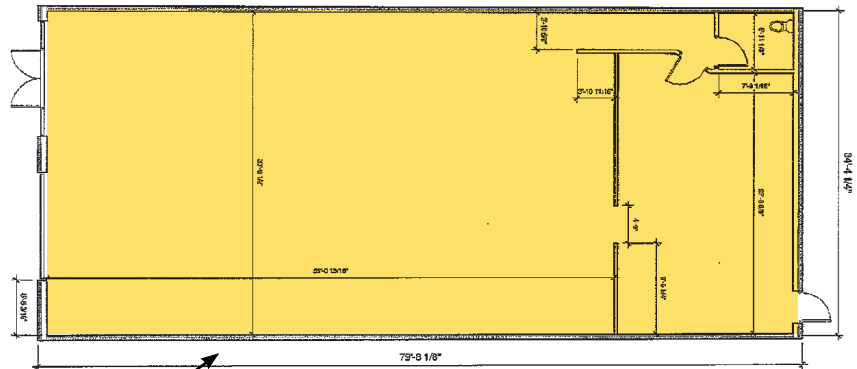
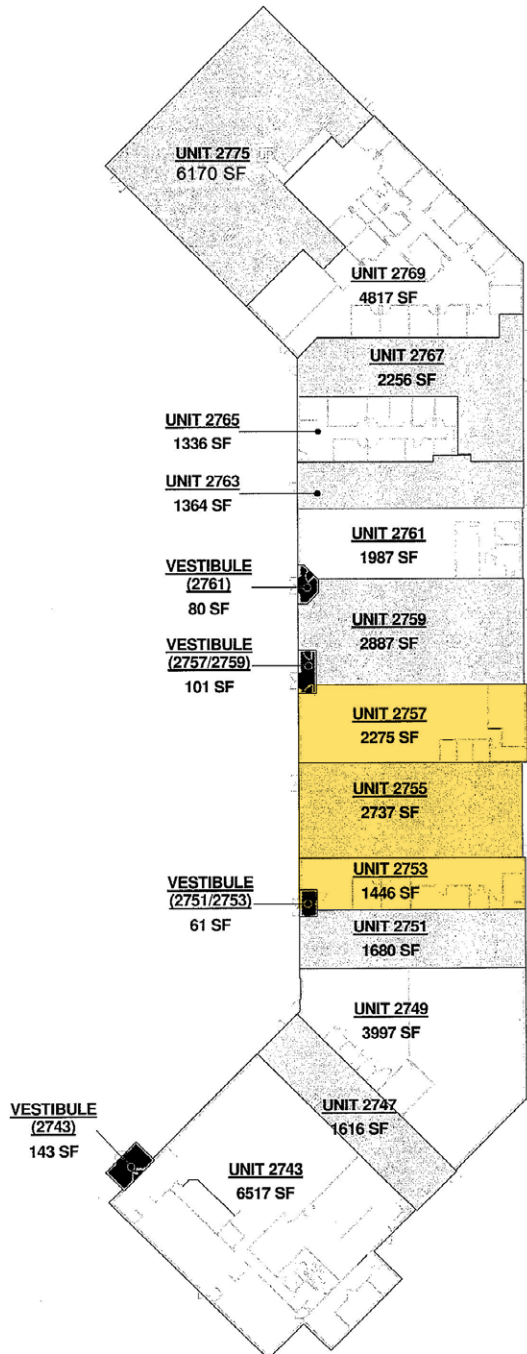
- **For Lease: \$12.75 to \$13.50/SF/NNN**
- Available space
Suite 2753: 1,477 SF | Suite 2755: 2,737 SF
Suite 2757: 2,240 SF
- Established Multi-Tenant Center
- Ample parking
- Available office/retail space located in one of Urbandale's strongest commercial corridors.
- Located near Panera Bread, Natural Grocers and many other amenities
- Close proximity to newly rebranded I-35/80 interchange
- Traffic Count: 21,700 vehicles per day

STANBROUGH REALTY COMPANY
2775 86th Street
Urbandale, Iowa 50322
StanbroughRealty.com | 515.334.3345

JEFF STANBROUGH
CCIM, CPM
515.202.6649
Jeff@StanbroughRealty.com

ANDREW MCCUNE
515.402.1642
Andrew@StanbroughRealty.com

*Suite Site Plan
& Floor Plan*



UNIT 2755 FLOOR PLAN

STANBROUGH REALTY COMPANY
2775 86th Street
Urbandale, Iowa 50322
StanbroughRealty.com | 515.334.3345

JEFF STANBROUGH
CCIM, CPM
515.202.6649
Jeff@StanbroughRealty.com

ANDREW MCCUNE
515.402.1642
Andrew@StanbroughRealty.com