

FOR LEASE

1106 Thomasville Road Tallahassee, FL 32303

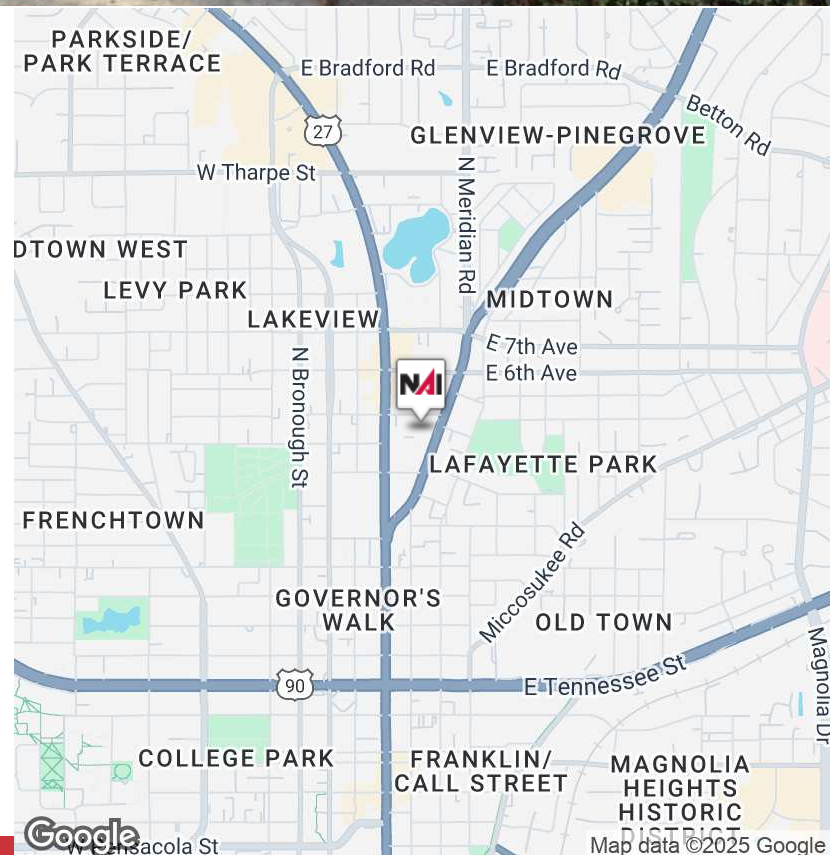
NAI TALCOR



Office | 208 - 2,112 SF

Traditional office building with a variety of floor plans. Full Service Leases include utilities, janitorial, and on-site management. Spaces are attached to the Manor@Midtown where local retail shops & restaurants are located!

- Located in the Heart of Midtown near downtown Tallahassee, Thomasville Road & North Monroe!
- Full Service Lease including utilities, janitorial, on-site property management
- Shared conference room!
- Single office suites start at \$325/month
- Building does not have an elevator - basement level and second floor only accessible by stairs



✉ **Jessica Halleck**
+1 850 224 2300
jessica@talcor.com

✉ **Slaton Murray, SIOR, CCIM**
+1 850 294 8521
slaton@talcor.com

No Warranty Or Representation, Express Or Implied, Is Made As To The Accuracy Of The Information Contained Herein, And The Same Is Submitted Subject To Errors, Omissions, Change Of Price, Rental Or Other Conditions, Prior Sale, Lease Or Financing, Or Withdrawal Without Notice, And Of Any Special Listing Conditions Imposed By Our Principals No Warranties Or Representations Are Made As To The Condition Of The Property Or Any Hazards Contained Therein Are Any To Be Implied.



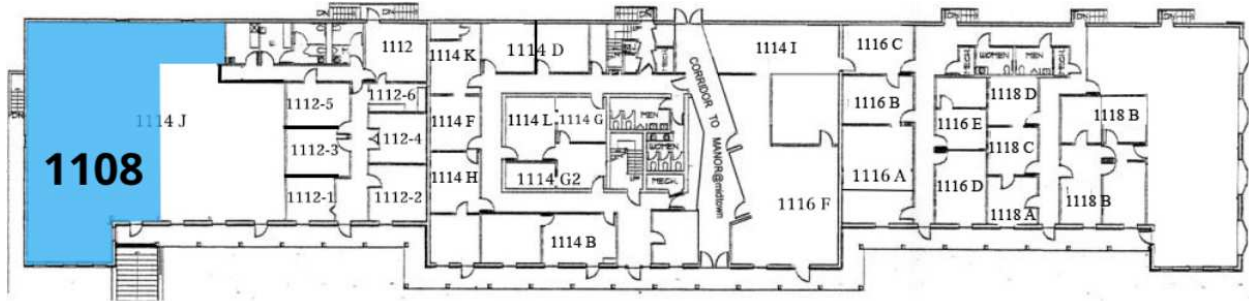
NAI TALCOR

1018 Thomasville Road, Suite 200A
talcor.com

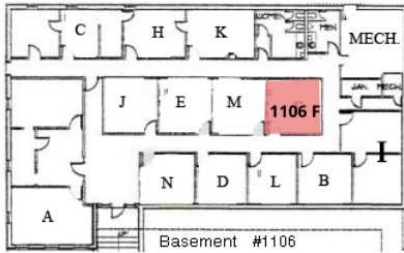
FOR LEASE

1106 Thomasville Road Tallahassee, FL 32303

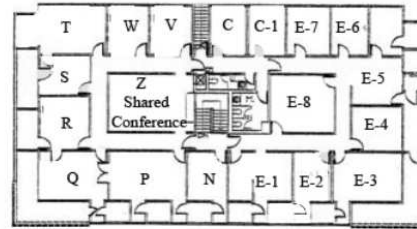
LEASE TYPE | Full Service **TOTAL SPACE** | 208 - 2,112 SF **LEASE TERM** | Negotiable **LEASE RATE** | \$325.00 - \$2,500.00 per month



Ground floor



Basement #1106



Second Floor #1114

AVAILABLE NOW

APPLICATION PENDING

SUITE	TENANT	SIZE	TYPE	RATE	DESCRIPTION
1108	Available Now	2,112 SF	Full Service	\$2,500 per month	Ground floor office space with 6 offices, conference room, kitchenette.
1106 F	Application Pending	208 SF	Full Service	\$325 per month	Basement level, single suite.

✉ **Jessica Halleck**
+1 850 224 2300
jessica@talcor.com

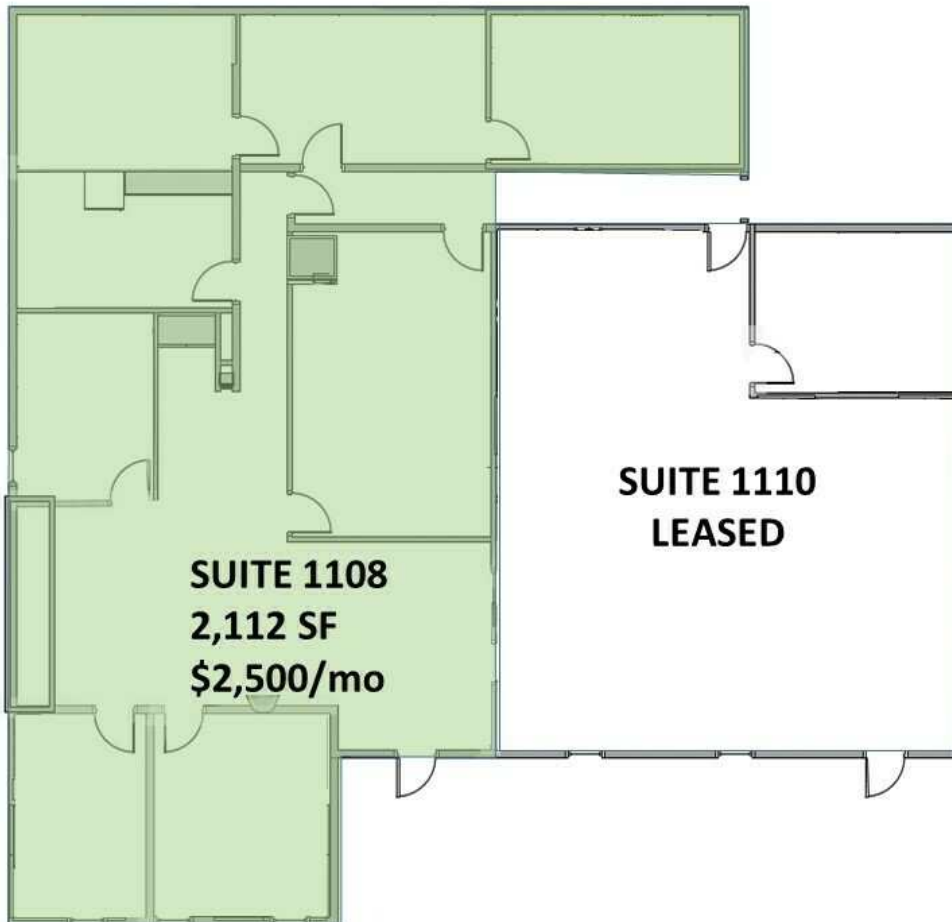
✉ **Slaton Murray, SIOR, CCIM**
+1 850 294 8521
slaton@talcor.com

No Warranty Of Representation, Express Or Implied, Is Made As To The Accuracy Of The Information Contained Herein, And The Same Is Submitted Subject To Errors, Omissions, Change Of Price, Rental Or Other Conditions, Prior Sale, Lease Or Financing, Or Withdrawal Without Notice, And Of Any Special Listing Conditions Imposed By Our Principals No Warranties Or Representations Are Made As To The Condition Of The Property Or Any Hazards Contained Therein Are Any To Be Implied.



FOR LEASE

1106 Thomasville Road Tallahassee, FL 32303



✉ **Jessica Halleck**
+1 850 224 2300
jessica@talcor.com

✉ **Slaton Murray, SIOR, CCIM**
+1 850 294 8521
slaton@talcor.com

No Warranty Of Representation, Express Or Implied, Is Made As To The Accuracy Of The Information Contained Herein, And The Same Is Submitted Subject To Errors, Omissions, Change Of Price, Rental Or Other Conditions, Prior Sale, Lease Or Financing, Or Withdrawal Without Notice, And Of Any Special Listing Conditions Imposed By Our Principals No Warranties Or Representations Are Made As To The Condition Of The Property Or Any Hazards Contained Therein Are Any To Be Implied.

NAITALCOR

FOR LEASE

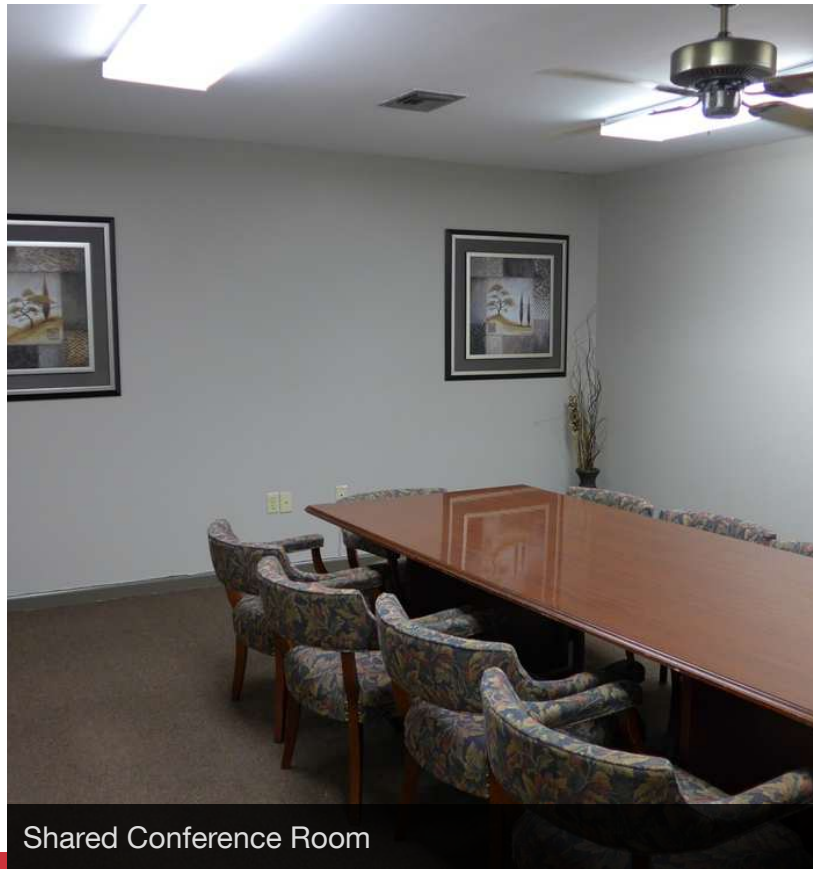
1106 Thomasville Road Tallahassee, FL 32303



Ample Parking



Updated Carpeting



Shared Conference Room

✉ **Jessica Halleck**
+1 850 224 2300
jessica@talcor.com

✉ **Slaton Murray, SIOR, CCIM**
+1 850 294 8521
slaton@talcor.com

No Warranty Or Representation, Express Or Implied, Is Made As To The Accuracy Of The Information Contained Herein, And The Same Is Submitted Subject To Errors, Omissions, Change Of Price, Rental Or Other Conditions, Prior Sale, Lease Or Financing, Or Withdrawal Without Notice, And Of Any Special Listing Conditions Imposed By Our Principals No Warranties Or Representations Are Made As To The Condition Of The Property Or Any Hazards Contained Therein Are Any To Be Implied.

NAITALCOR