

FOR LEASE

The Courtyard at Castle Rock

333 Perry Street, Castle Rock, Colorado, 80104



County: Douglas
Building Size: 52,965 SF
Site Size: .961 Acres
Year Built: 2003

Office Space Available: 1,780 SF
Minimum Divisible: 800 SF
Maximum Contiguous: 800 SF
Est. Office Lease Rate: \$18.00/SF
Est. NNN: \$14.50/SF

Retail/Restaurant Space Available: N/A
Minimum Divisible: N/A
Maximum Contiguous: N/A
Retail/Restaurant Lease Rate:
Est. NNN:

Amenities and Interior Upgrades:

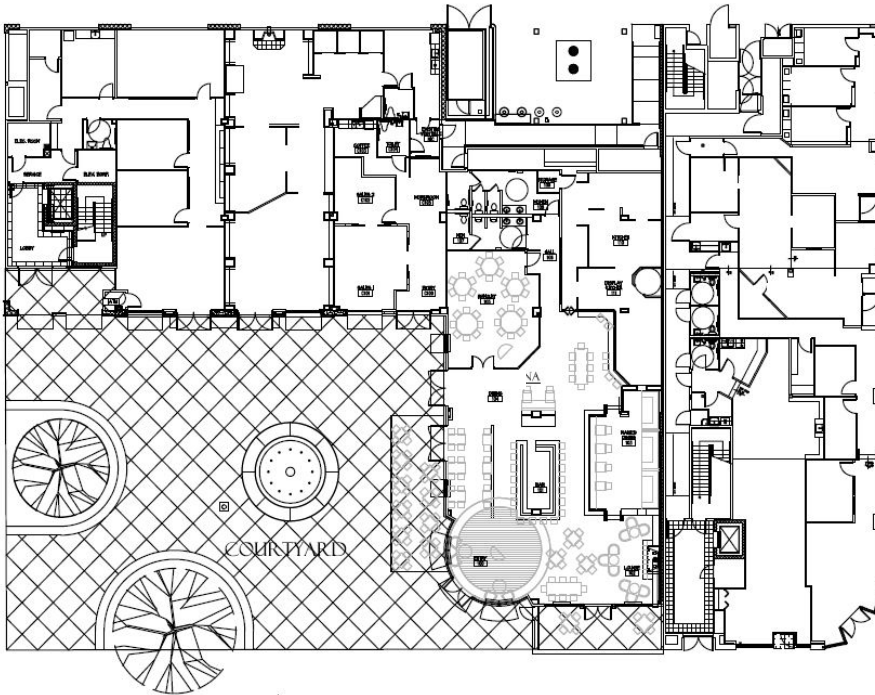
- Central location in downtown Castle Rock
- Anchored by Courtyard Social restaurant.
- New common area paint and carpets
- New lobby remodels (2020)
- Common area lighting upgrades
- Common area conference rooms and kitchens
- Onsite and off-site parking available
- Street level retail with office on the 2nd and 3rd floors
- Single offices with a shared reception area available



First Western
Realty and Management

Todd Hannebaum
Cell: (720) 725-9594
todd@firstwesternrealty.com

FLOOR PLAN - 333 & 399 Perry St.

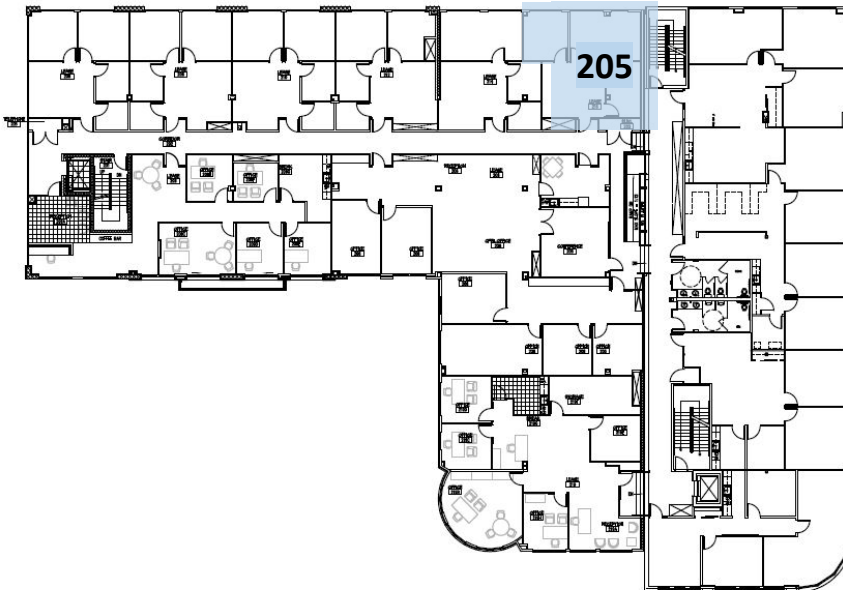


First Floor
Retail/Restaurant

No Availability

① FIRST FLOOR PLAN
1/8" = 1'-0"

FLOOR PLAN - 333 & 399 Perry St.

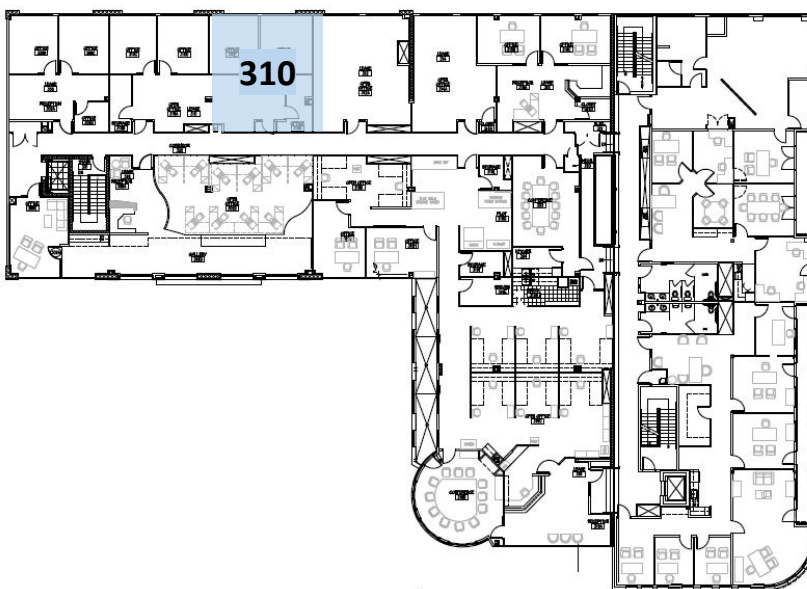


Second Floor
Office

Suite 205 - 800 SF - \$18.00/SF NNN

① SECOND FLOOR PLAN
1/8" = 1'-0"

FLOOR PLAN - 333 & 399 Perry St.



Third Floor
Office

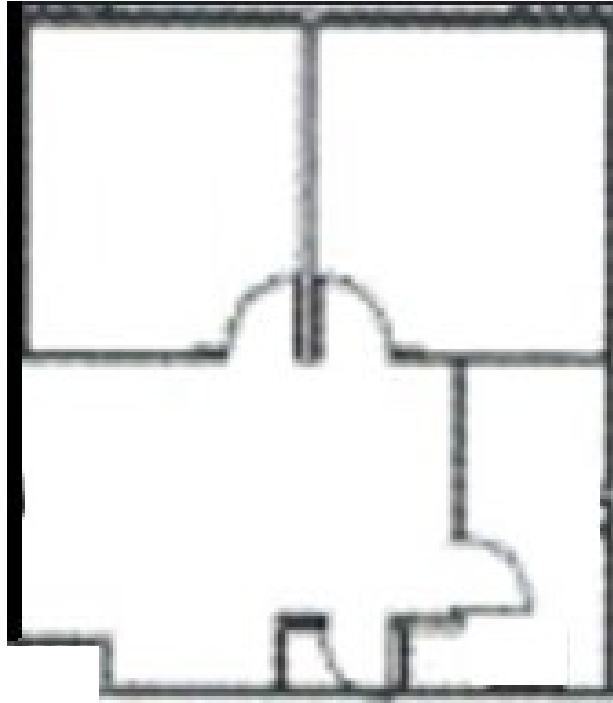
Suite 310 - 980 SF - \$18.00/SF NNN

① THIRD FLOOR PLAN
1/8" = 1'-0"

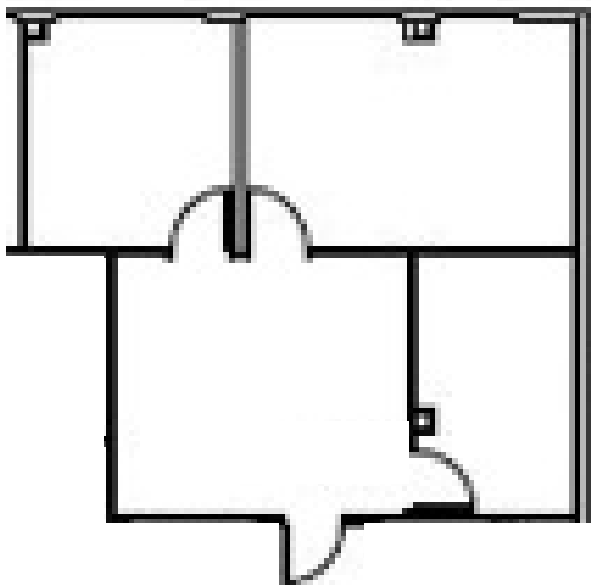
Sketch only, Tenant to verify layout

Office Suites

Suite 310
980 RSF
Available
4/1/2025



Suite 205
800 RSF
Available
1/2/2025



333 Perry Street, Castle Rock, Colorado



First Western
Realty and Management

Todd Hannebaum
Cell: (720) 725-9594
todd@firstwesternrealty.com