



400 Seaport Court

Redwood City, California



PROPERTY OVERVIEW

AVAILABLE FOR LEASE

SUITE 100: ±8,466 SF

SUITE 110: ±3,228 SF

SUITE 120: ±3,698 SF

SUITE 204: ±2,565 SF

HIGHLIGHTS

- (Suite 100) Approved Use Includes Medical Device Space (30%) and Existing Operational Build-Out
- (Suite 110 & 120) Professional Office Use New Carpet and Paint
- (Suite 204) Shell Condition Approved Use Medical Office —TI Allowance of \$20 PSF / Landlord Handles Design and Buildout
- (Suite 100 & 110) Conference Rooms – Wired for AV
- Multiple Configurations for Potential Expansion at First Floor
- High Ceilings at Suite 204
- Common Area Bathrooms Each Floor
- Kitchenette at Each Suite
- Ample Parking @ 4/1k

LEASE RATES

- \$3.25 Full Service (First Floor)
- \$3.50 Full Service (Second Floor)

**LOCATED AT THE PORT
OF REDWOOD CITY**

±2,565 SF — ±15,392 SF OFFICE SPACE AVAILABLE FOR LEASE

400 Seaport Court, Redwood City



CONTACT US

Anthony Kamm

ak@seq-rs.com

650.888.3858

CAL DRE LIC NO. 01783456

Ryan Pegnim

rcp@seq-rs.com

650.346.9820

CAL DRE LIC NO. 01478696

Frank Orrell

fo@seq-rs.com

650.302.4775

CAL DRE LIC NO. 01872831

Luis Amaya-Franco

luis@seq-rs.com

650.425.0533

CAL DRE LIC NO. 02243469



±2,565 SF — ±15,392 SF OFFICE SPACE AVAILABLE FOR LEASE

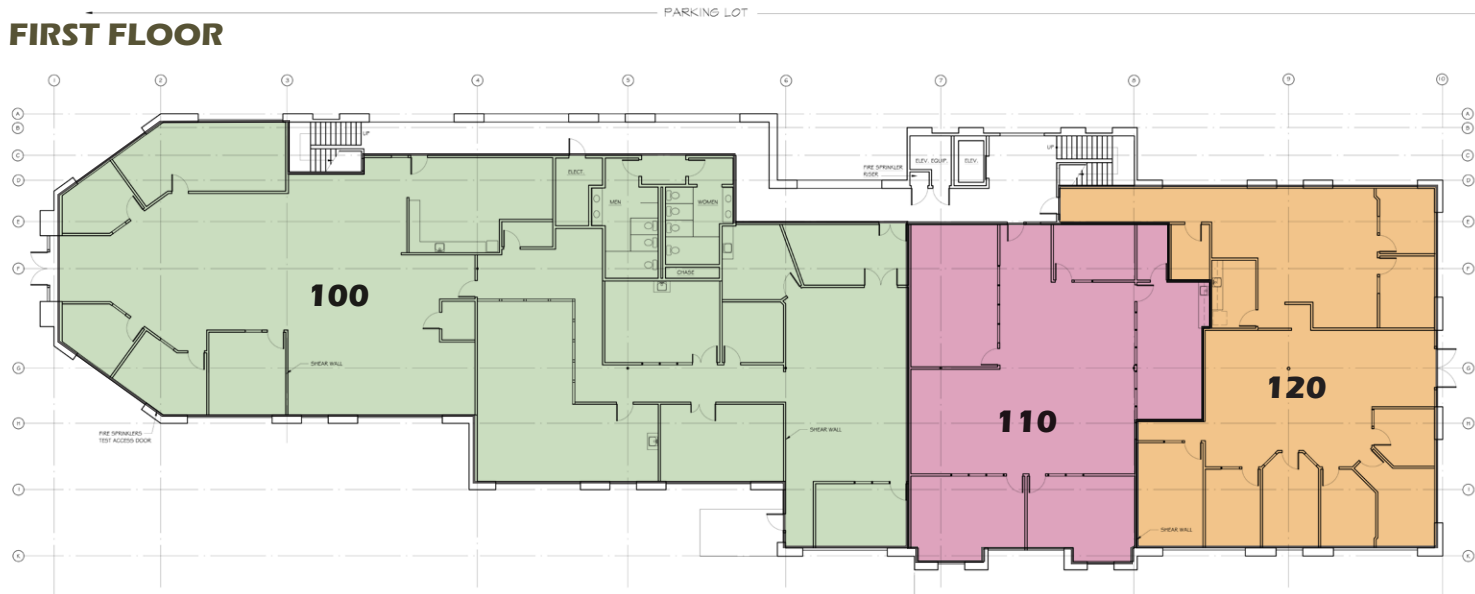
400 Seaport Court, Redwood City

AVAILABLE SUITES

- Suite 100: ±8,466 SF
- Suite 204: ±2,565 SF
- Suite 110: ±3,228 SF
- Suite 120: ±3,698 SF



FIRST FLOOR



SECOND FLOOR



CONTACT US

Anthony Kamm
ak@seq-rs.com
650.888.3858
CAL DRE LIC NO. 01783456

Ryan Pegnim
rcp@seq-rs.com
650.346.9820
CAL DRE LIC NO. 01478696

Frank Orrell
fo@seq-rs.com
650.302.4775
CAL DRE LIC NO. 01872831

Luis Amaya-Franco
luis@seq-rs.com
650.425.0533
CAL DRE LIC NO. 02243469

