



2,394 SF OFFICE
SPACE FOR SUBLEASE



[VIEW VIRTUAL TOUR](#)

Centurion Tower

1601 Forum Place

**NEWLY BUILT
MOVE-IN READY
SUBLEASE**

1601 FORUM PL |
WEST PALM BEACH |
FL 33401

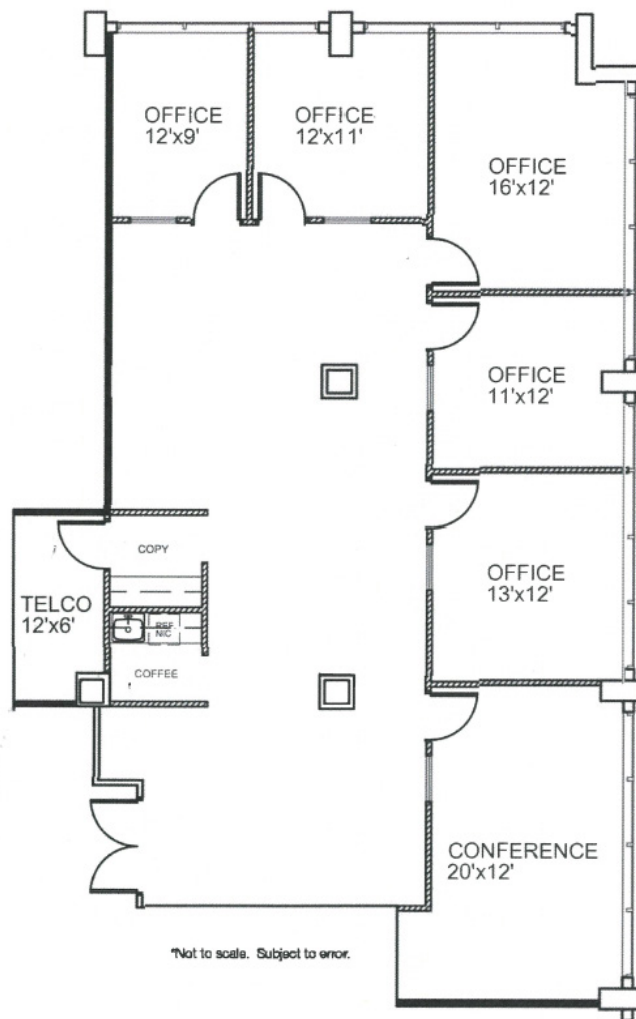
WILL PORTFOLIO
Senior Vice President
+1 561 3931671
will.portfolio@cbre.com

SARA WILLIAMS
Transaction Manager
+1 561 227 1806
sara.williams@cbre.com

CBRE

SUITE 205 FLOORPLAN

2,394 SF
SUBLEASE



[VIEW VIRTUAL TOUR](#)

- Term through July 2027
- Base Rent: Contact Broker for Details
- OpEx: \$15.50/SF + electric
- Class A Building
- On-Site Security

-3.50/1,000 SF Parking Ratio

- Covered Garage Parking
- Electric Charging Stations

-Well positioned property, close to I-95, downtown West Palm Beach, Brightline station, and walkable to the Palm Beach Outlets.

3 MILE DEMOGRAPHICS

1601 FORUM PL

122,438
Population

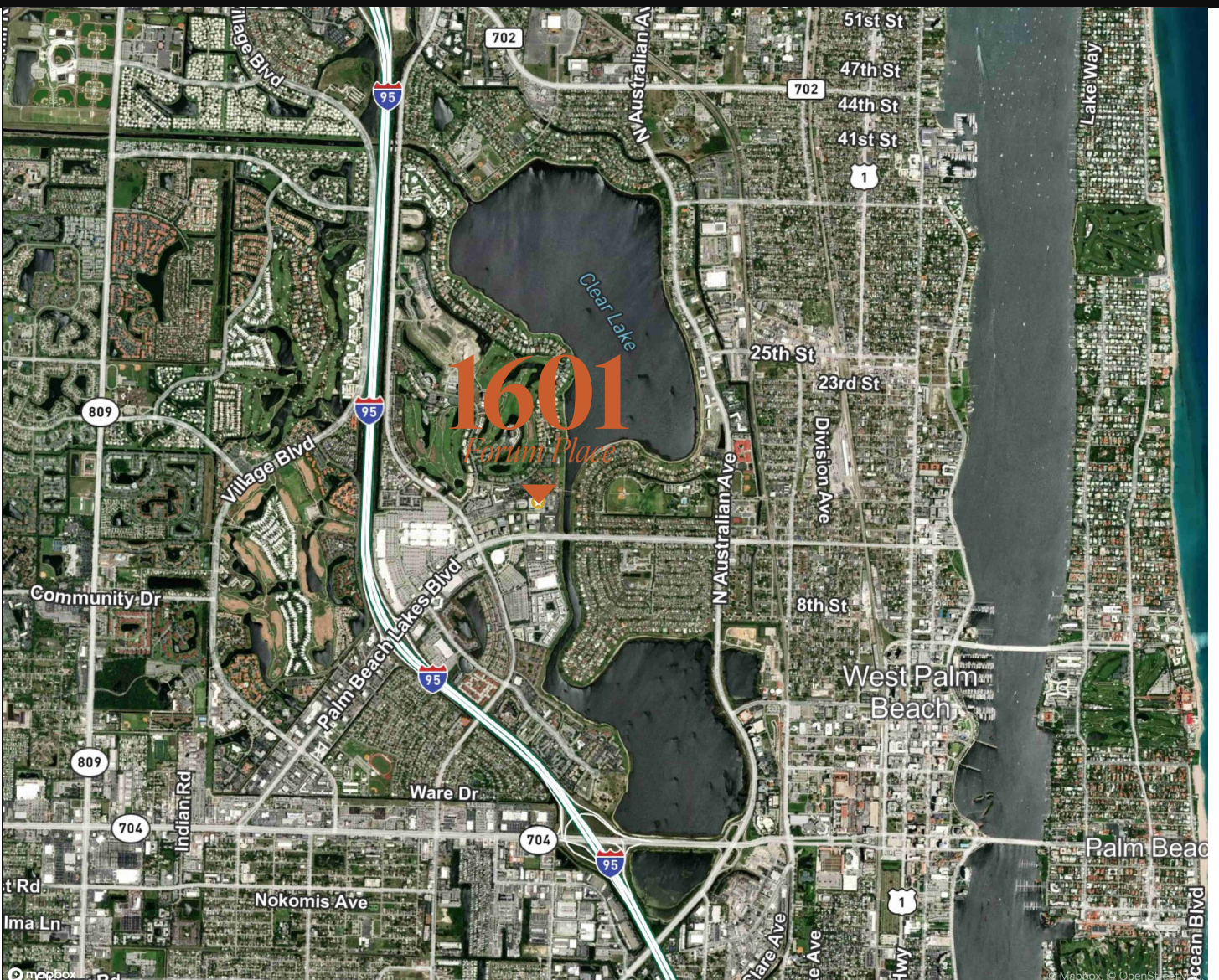
11,141
Place of Work

52,223
Households

42,000
AADT: Palm Beach
Lakes

\$91,518
Average Household
Income

61,773
Housing Units



2,394 SF OFFICE
SPACE FOR SUBLEASE



Centurion Tower

1601 Forum Place

1601 FORUM PL |
WEST PALM BEACH |
FL 33401

WILL PORTFOLIO

Senior Vice President
+1 561 3931671
will.portfolio@cbre.com

SARA WILLIAMS

Transaction Manager
+1 561 227 1806
sara.williams@cbre.com

CBRE

© 2024 CBRE, Inc. All rights reserved. This information has been obtained from sources believed reliable but has not been verified for accuracy or completeness. CBRE, Inc. makes no guarantee, representation or warranty and accepts no responsibility or liability as to the accuracy, completeness, or reliability of the information contained herein. You should conduct a careful, independent investigation of the property and verify all information. Any reliance on this information is solely at your own risk. CBRE and the CBRE logo are service marks of CBRE, Inc. All other marks displayed on this document are the property of their respective owners, and the use of such marks does not imply any affiliation with or endorsement of CBRE. Photos herein are the property of their respective owners. Use of these images without the express written consent of the owner is prohibited.