

MEDICAL OFFICE AT CROSSINGS MEDICAL PLAZA

SUITE 110 - 4,274 SF

SUITE 203 - 5,179 SF

SUITE 205 - 2,120 SF



CROSSINGS MEDICAL PLAZA / OVERVIEW



PROPERTY HIGHLIGHTS

- 20-minute drive to downtown Nashville
- Convenient access to I-24 and Century Farms at Exit 60
- Highest population growth zip code in Davidson County
- Improvements: 2025: New Elevator, Irrigation, and Backflow, 2024: New HVAC, 2022: New Common Area Flooring, and 2018: New Roof

PROPERTY FEATURES

ADDRESS	5380 Hickory Hollow Pkwy Nashville, TN 37013
SIZE	38,879 SF
USE	Medical Office or Retail
RATE	\$18-28 NNN
AVAILABLE SUITES	110 – 4,274 SF 203* – 5,179 SF 205* – 2,120 SF <i>*Combinable suites</i>

CROSSINGS MEDICAL PLAZA / ADDITIONAL IMAGES



CROSSINGS MEDICAL PLAZA / FLOORPLAN

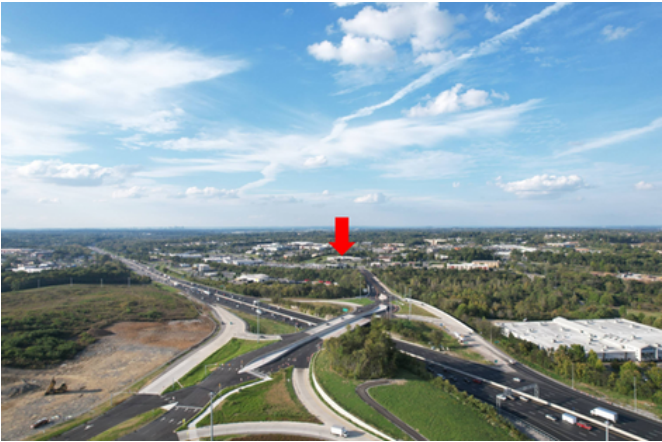
First Floor



Second Floor



803 S MAIN ST / LOCATION

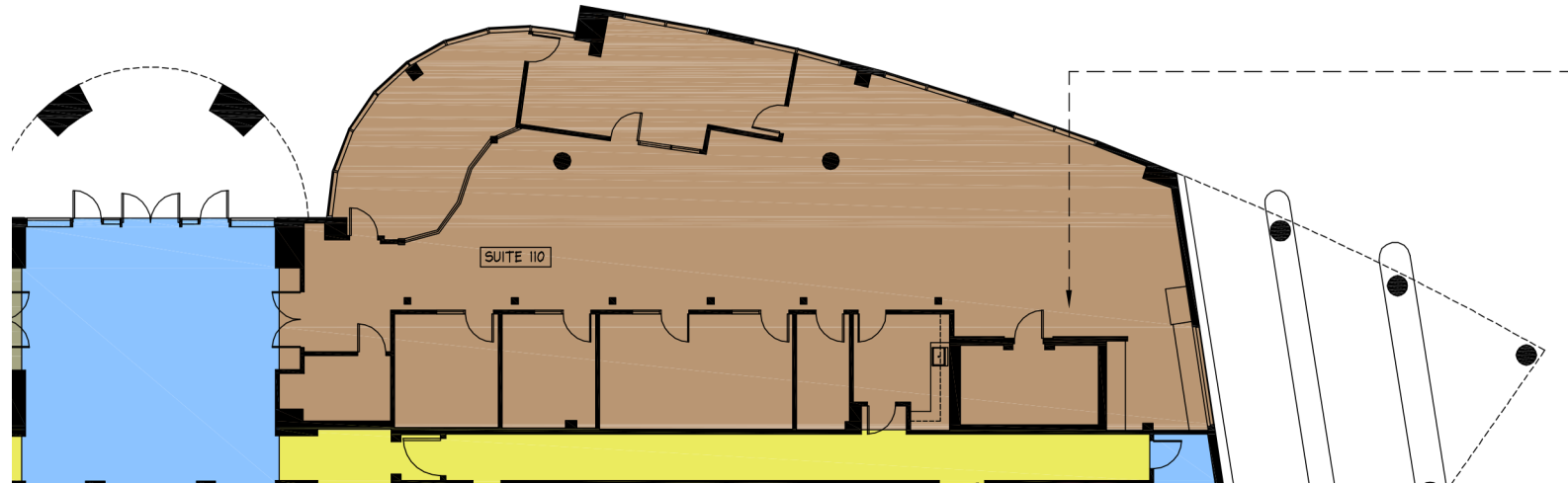


CROSSINGS MEDICAL PLAZA / MONUMENT SIGNAGE



Direct Frontage on I-24 Exit Ramp

SUITE 110 / OVERVIEW & FLOOR PLAN



SUITE FEATURES

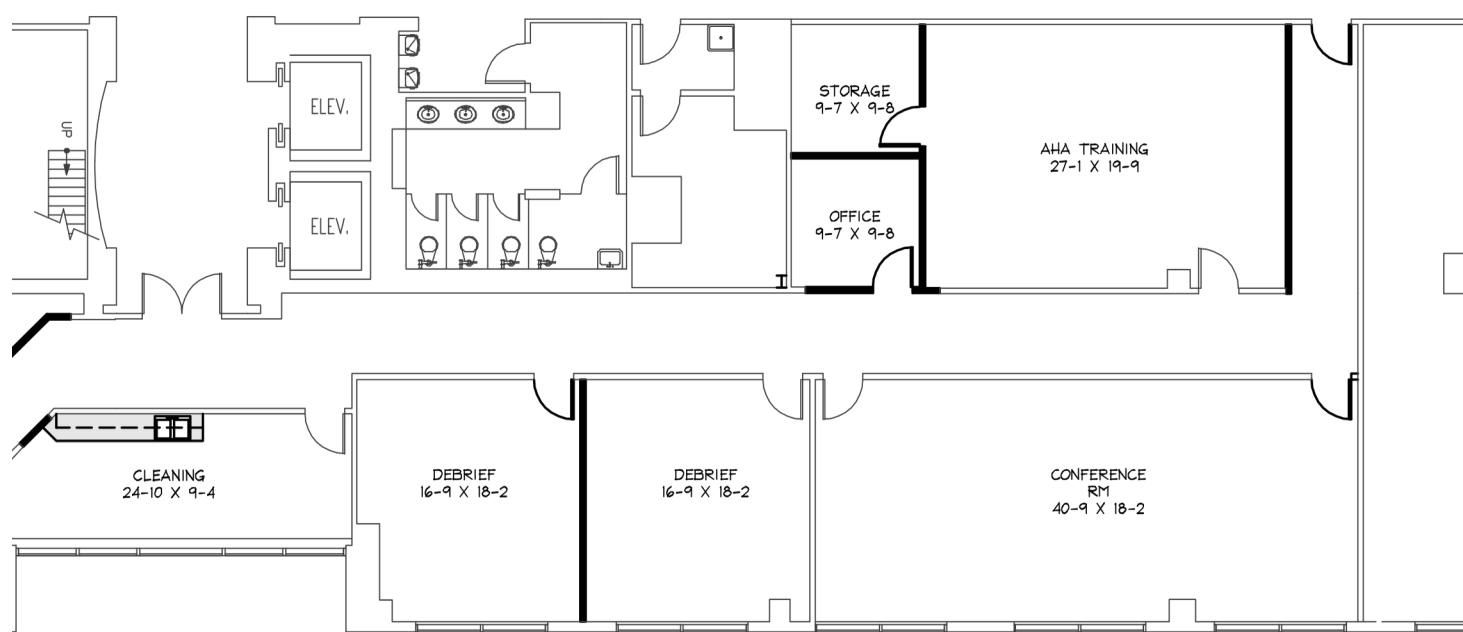
SIZE 4,274 SF

- HIGHLIGHTS**
- Four Private Offices
 - Two Conference Rooms
 - Breakroom
 - Floor to Ceiling Windows
 - Drive-Thru Access

SUITE 110 / ADDITIONAL IMAGES



SUITE 203 / OVERVIEW & FLOOR PLAN



SUITE FEATURES

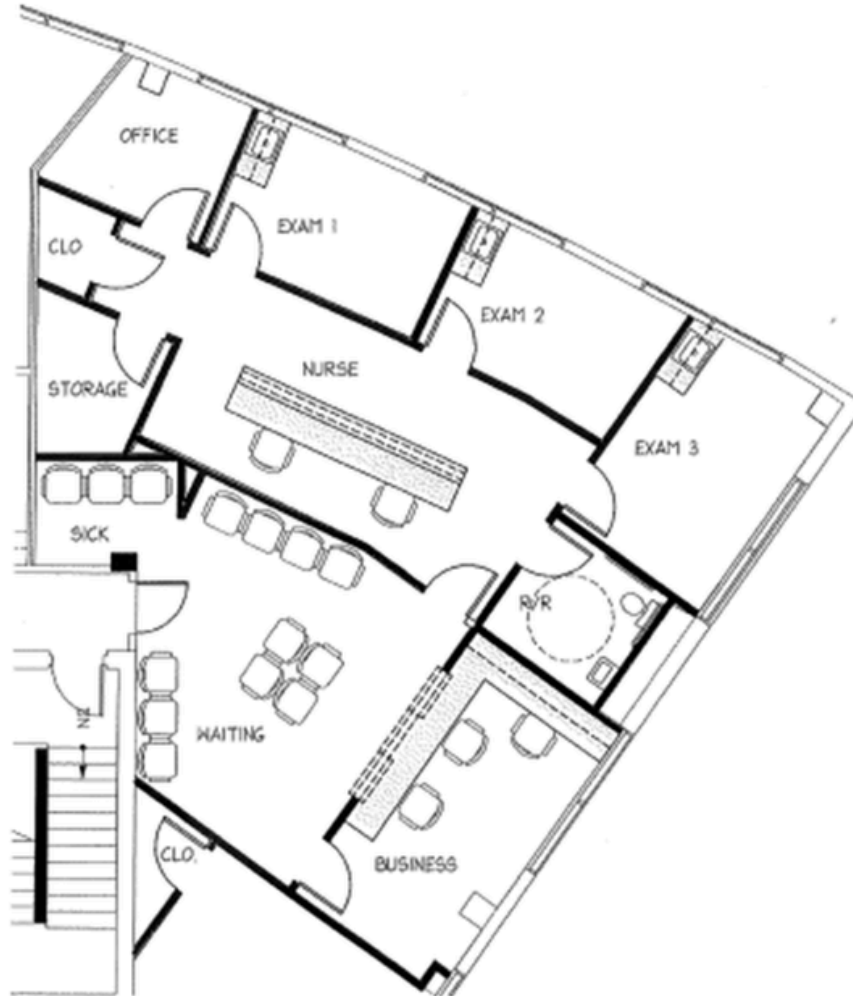
SIZE 5,179 SF

- HIGHLIGHTS**
- Direct Lobby Frontage
 - Flexible Floorplan
 - Class A Finishes
 - Break Room
 - Floor-to-Ceiling Windows
 - Ample Parking

SUITE 203 / ADDITIONAL IMAGES



SUITE 205 / OVERVIEW & FLOOR PLAN



SUITE FEATURES

SIZE 2,120 SF

- HIGHLIGHTS**
- Waiting Room
 - Front Desk
 - 3 Exam Rooms with sinks
 - 2 Private Offices
 - Nurse Station
 - Floor-to-Ceiling Windows
 - Large Storage Room

SUITE 205 / ADDITIONAL IMAGES



FOR MORE INFORMATION:

THOMAS FREELAND

(615) 870-9077

thomas@freelandcre.com

ELIZABETH FREELAND

(615) 943-9292

elizabeth@freelandcre.com



[LoopNet Listing](#)



<https://www.freelandcre.com/>