

28 Kennedy Blvd.

East Brunswick, NJ 08816

FOR LEASE

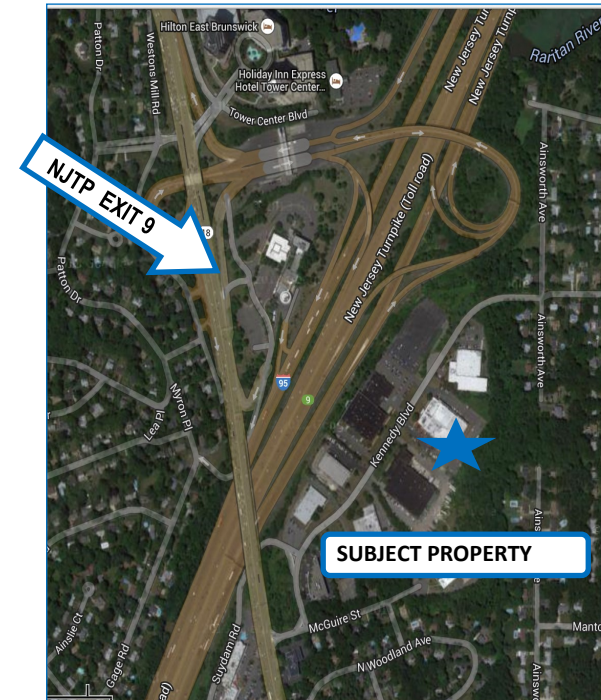
1,750 S.F. OFFICE SPACE

- Three (3) Window-Lined Private Offices with Large Open Area
- Seconds From NJ Turnpike, Exit 9, Route 18 and Route 1
- Ample Parking
- 24/7 Access
- Close Proximity to Restaurants
- Property Manager on Site

LEASE PRICE: \$16.95/SF PLUS TE

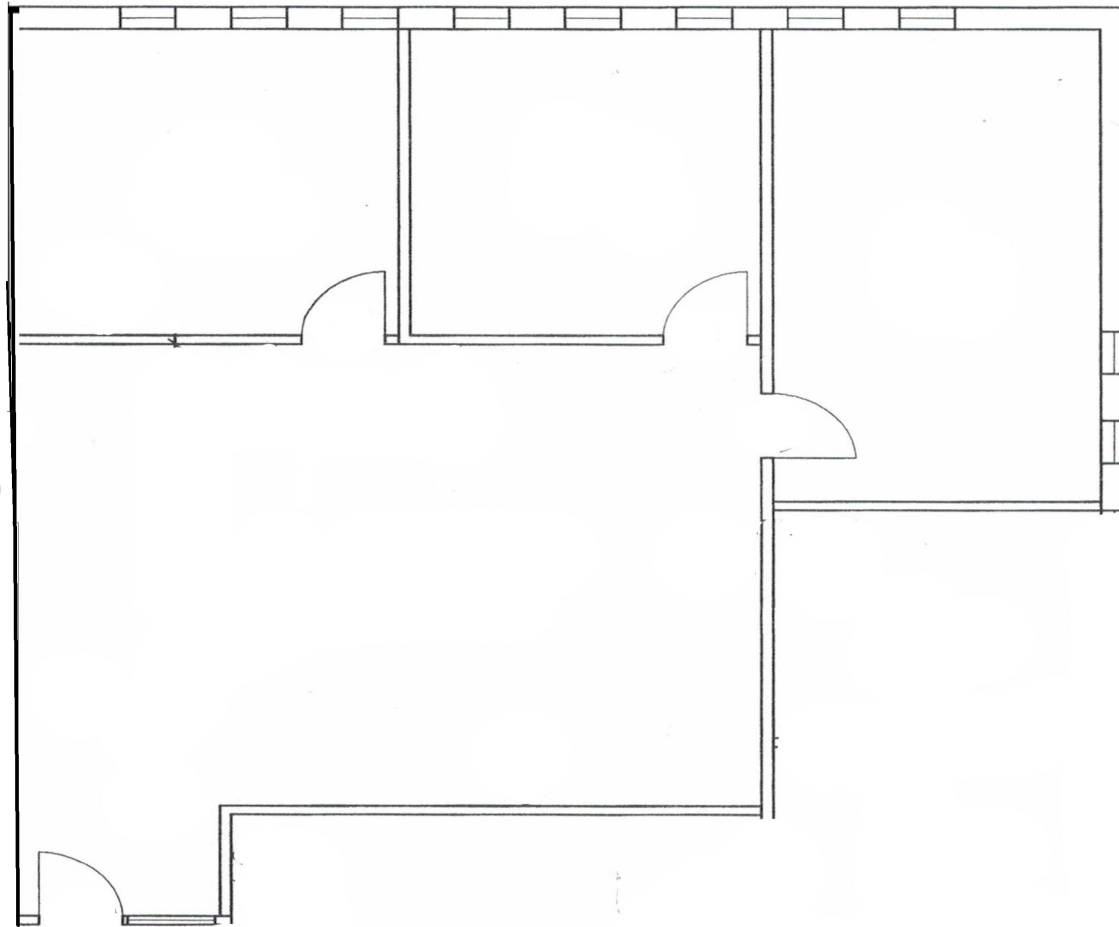
Lance Bram
COMMERCIAL BROKERAGE
www.lancebram.com

CHRISTINE SOCCODATO 732.545.1850 X 32
CHRISTINE@LANCEBRAM.COM



28 Kennedy Blvd.

East Brunswick, NJ 08816



CHRISTINE SOCCODATO 732.545.1850 X 32
CHRISTINE@LANCEBRAM.COM

This information has been secured from sources we believe to be reliable. Accordingly, no warranty or representation, express or implied, is made to the accuracy of the information contained herein, and same submitted to errors, omissions, change of price, rental or other conditions, withdrawal notice, and to any special listing conditions imposed by our principals.