



Ambaum Commercial & Residential Building

Offered for lease is one office space in the Ambaum Commercial and Residential Building in Burien, a very walkable city with a variety of restaurants and shops in the downtown area, as well as entertainment options. Its proximity to Seattle, SeaTac, and Alki make it an easily accessible business location. Public transit stops are well placed along the boulevard including one in front of the Ambaum Commercial and Residential Building.

The office for lease is 1,300sf and features a reception area, a break area, four rooms, a restroom, and a back door out to outside deck area that overlooks Ambaum Blvd. The entrance to this office is at the back of the building, where tenants can park outside the entry door. The previous tenant was a mental health counseling business.

Property Overview

- Size: 1,300sf office
- Features: 4 rooms, break room, restroom
- Parking Spots: 30 (3.96 per 1,000sf)
- Asking rent: \$2,500.00/month
- Tenant pays additional electricity and water

DISCLAIMER: The above information has been secured from sources believed to be reliable, however, no representations are made to its accuracy. Prospective tenants or buyers should consult their professional advisors and conduct their own independent investigation. Properties are subject to change in price and/or availability without notice.

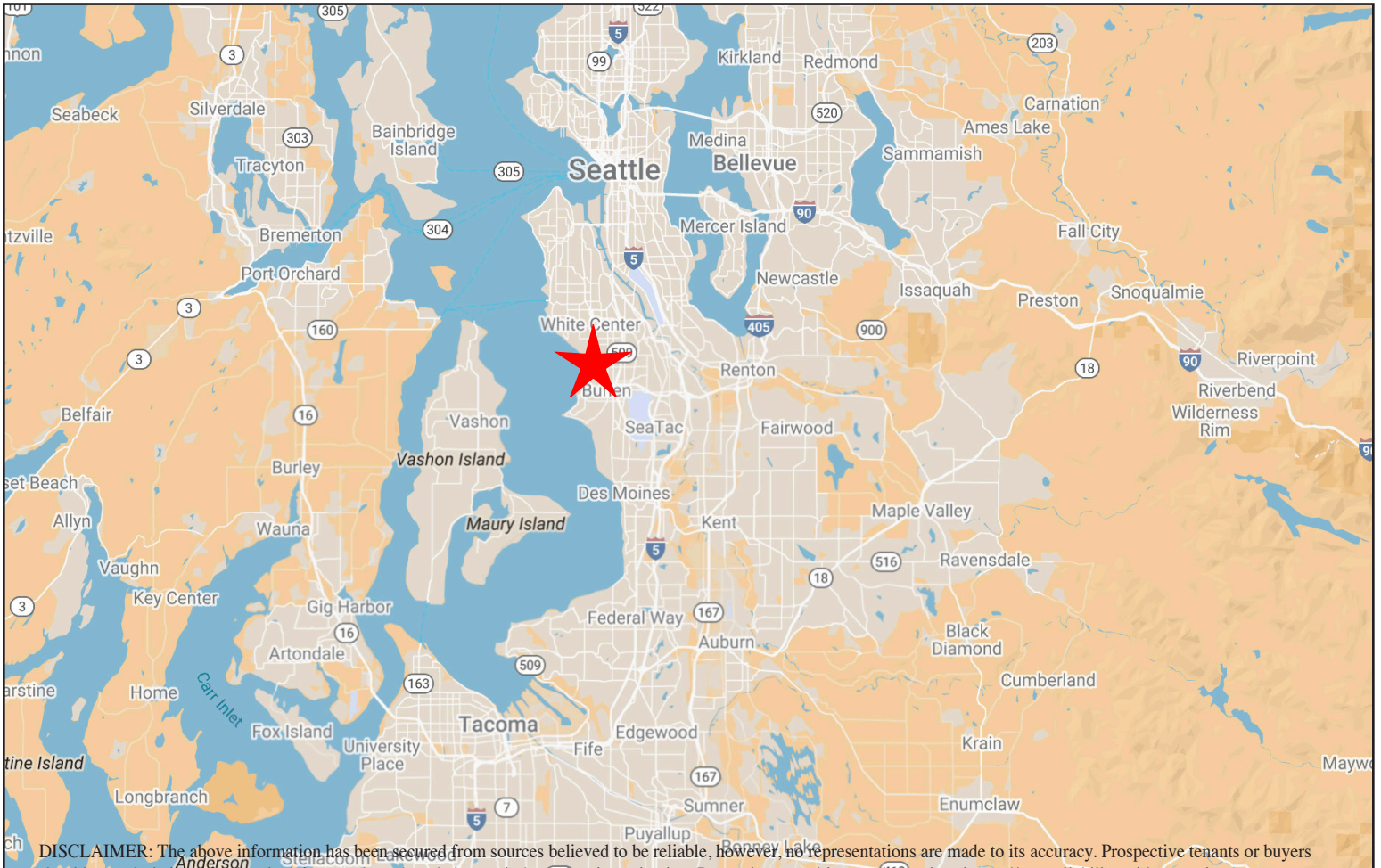




EXTERIOR PHOTOS



REGIONAL MAP



DISCLAIMER: The above information has been secured from sources believed to be reliable, however, no representations are made to its accuracy. Prospective tenants or buyers should consult their professional advisors and conduct their own independent investigation. Properties are subject to change in price and/or availability without notice.



11120 Gravelly Lake Dr SW Ste 2
Lakewood, Washington 98499
johnson-commercial.com

Margot Johnson

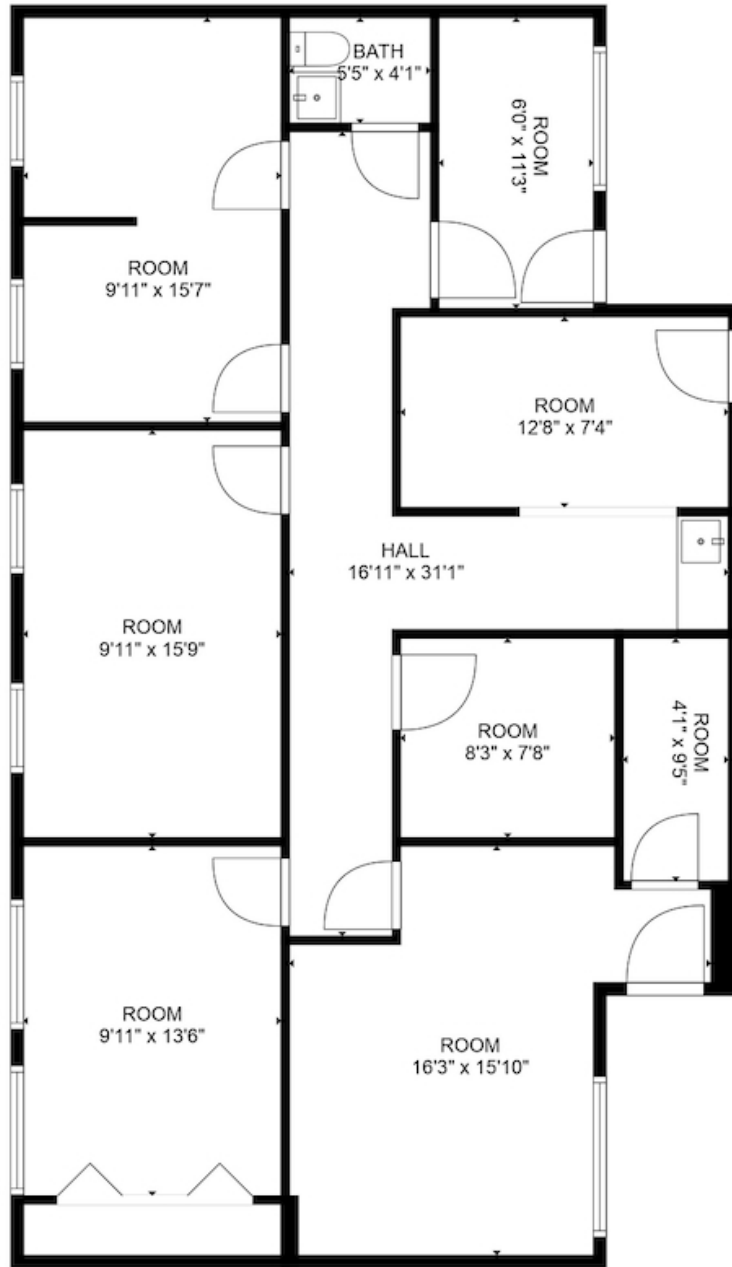
margot@johnson-commercial.com
O: (253) 589-9999 C: (253) 209-9998

Timothy Johnson

timothy@johnson-commercial.com
O: (253) 589-9999 C: (253) 209-9999



FLOOR PLAN



DISCLAIMER: The above information has been secured from sources believed to be reliable, however, no representations are made to its accuracy. Prospective tenants or buyers should consult their professional advisors and conduct their own independent investigation. Properties are subject to change in price and/or availability without notice.



11120 Gravelly Lake Dr SW Ste 2
Lakewood, Washington 98499
johnson-commercial.com

Margot Johnson

margot@johnson-commercial.com
O: (253) 589-9999 C: (253) 209-9998

Timothy Johnson

timothy@johnson-commercial.com
O: (253) 589-9999 C: (253) 209-9999