



**PRIME DOWNTOWN WEATHERFORD OFFICE | FOR SALE OR LEASE**

**CONTACT BROKERS FOR PRICE / RATE**



**BROKERS**

**Joseph Davidson, Associate**  
817.575.7078

**Casey Borgers, Vice President**  
817.965.3780

**FOR SALE & LEASE**

**210 E CHURCH ST. WEATHERFORD, TX 76086**

±2,812 SF Single-Tenant Office Centrally Located Near Courthouse & Amenities (Built: 2021)

copyright @ Costar



# PROPERTY OVERVIEW:

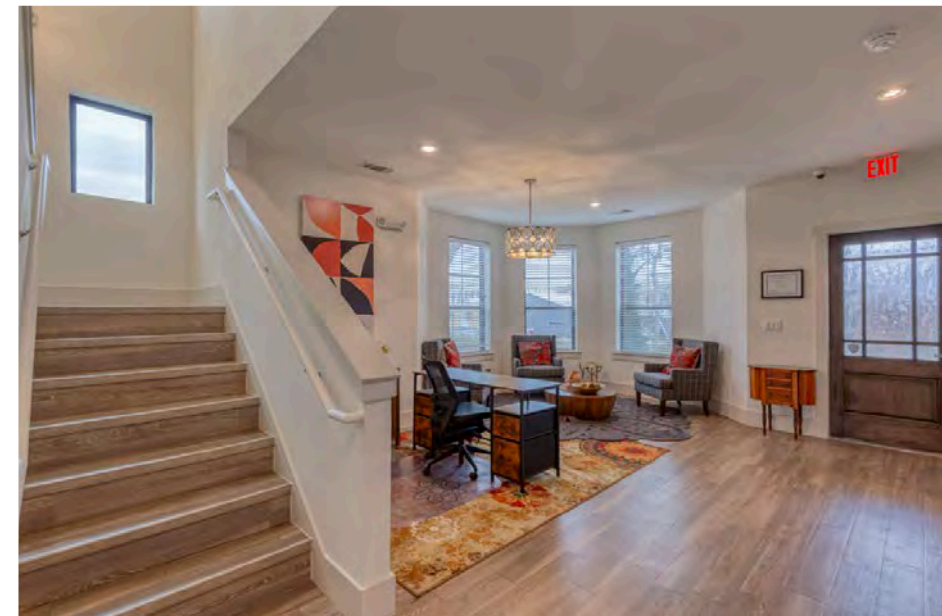
A well-maintained **±2,812 SF single-tenant office** building in the heart of downtown Weatherford, TX—minutes from Parker County Courthouse. **Constructed in 2021**, the property offers **five private offices**, a welcoming reception area, large kitchen/breakroom, four restrooms, abundant natural light, LVP floors, **outdoor seating area, a secured yard, Spectrum dedicated high-speed fiber, and a security system.** Ideal for professional services, creative office users, or owner-occupiers seeking a prominent downtown presence.

## FEATURES

- ±2,812 SF single-tenant office building
- 5 private offices + reception area, large kitchen / breakroom + 4 restrooms
- Outdoor seating area & secured yard
- LVP floors & abundant natural light
- Security system in place
- Dedicated File/Network Room
- ADA compliant
- Spectrum dedicated high-speed fiber
- Strong nearby workforce in healthcare, professional services, and retail







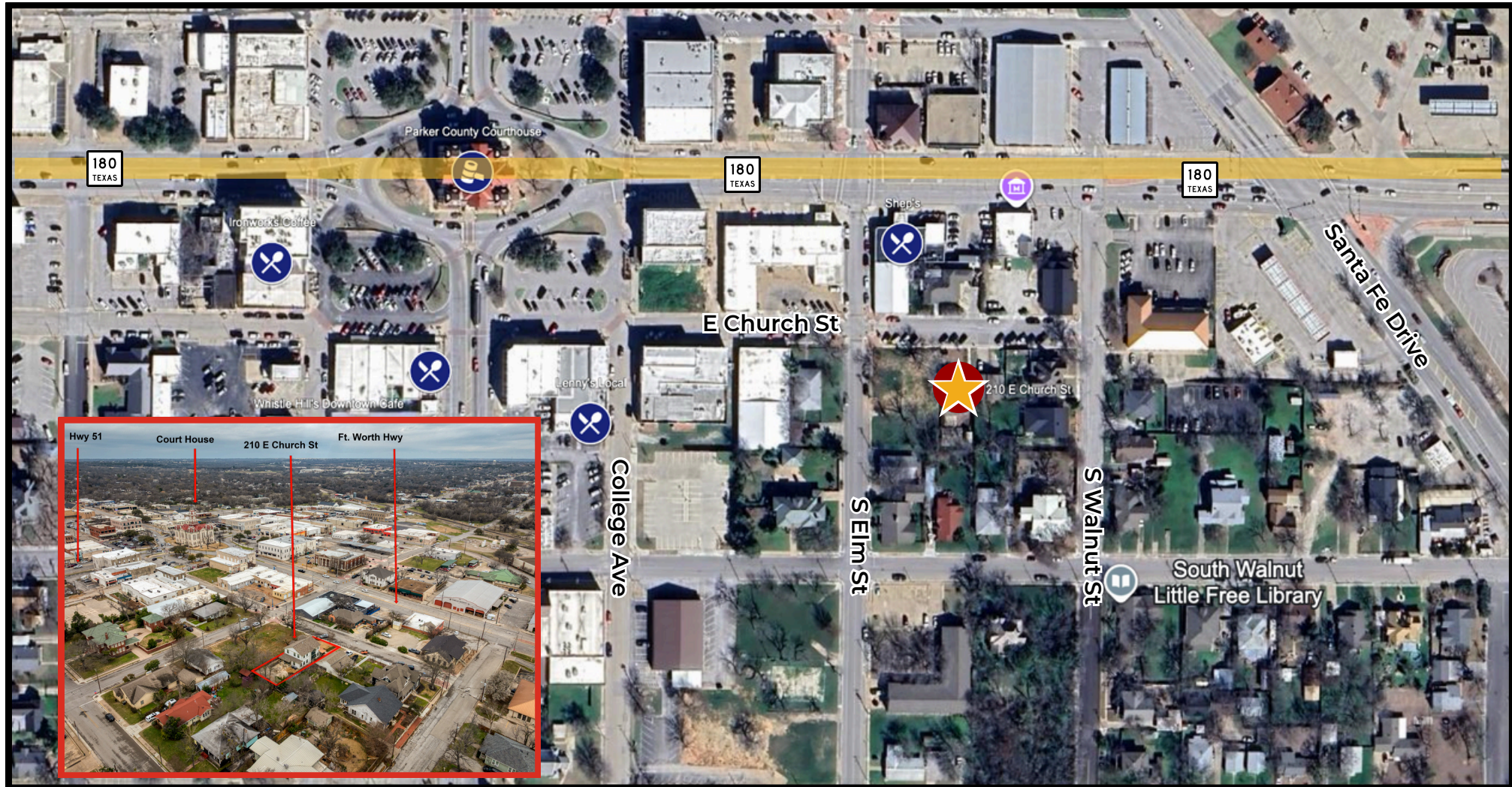


## ABOUT THE AREA:

Situated in the heart of downtown Weatherford, 210 E Church Street offers unparalleled access to Parker County's central business district. The area blends historic charm with modern convenience, providing a walkable environment for professionals and visitors alike. With strong local population growth (**projected 25%+ over the next five years**) and a daytime workforce spanning healthcare, professional services, and retail, this location provides a built-in community for tenants and visitors.

### POINTS OF INTEREST

- Parker County Courthouse (walking distance)
- Downtown Weatherford
- Parker County Library
- Chandor Gardens
- Pastafina Weatherford
- Shep's
- Skinny's Hamburgers
- Whistle Hill's
- Downtown Cafe
- Ironworks Coffee
- Ironworks Drive-Thru
- Heritage Park Pavillion
- Weatherford College
- Weatherford Medical City
- Ft. Worth Hwy (Hwy 180)
- TX-171
- I-20



[DETAILED MY MAPS](#)







# KEY INSIGHTS:

## MARKET & DEMAND

Located in downtown Weatherford, the property benefits from strong local daytime workforce and growing population. Nearby businesses, government offices, and services create consistent demand for office space.

## PROPERTY FUNCTION & LAYOUT

±2,812 SF single-tenant office built in 2021 with five private offices, reception, large kitchen/breakroom, and four restrooms. Modern interior finishes paired with a classic exterior provide a professional and flexible setting.

## AMENITIES & FEATURES

Abundant natural light, LVP floors, outdoor seating area, Spectrum dedicated high-speed fiber, file/network room secured yard, and security system enhance comfort and convenience for tenants and visitors.

## ACCESSIBILITY & LOCATION

Centrally positioned within walking distance to Parker County Courthouse, restaurants, and local services. Easy access to major roadways serving Weatherford and Parker County.

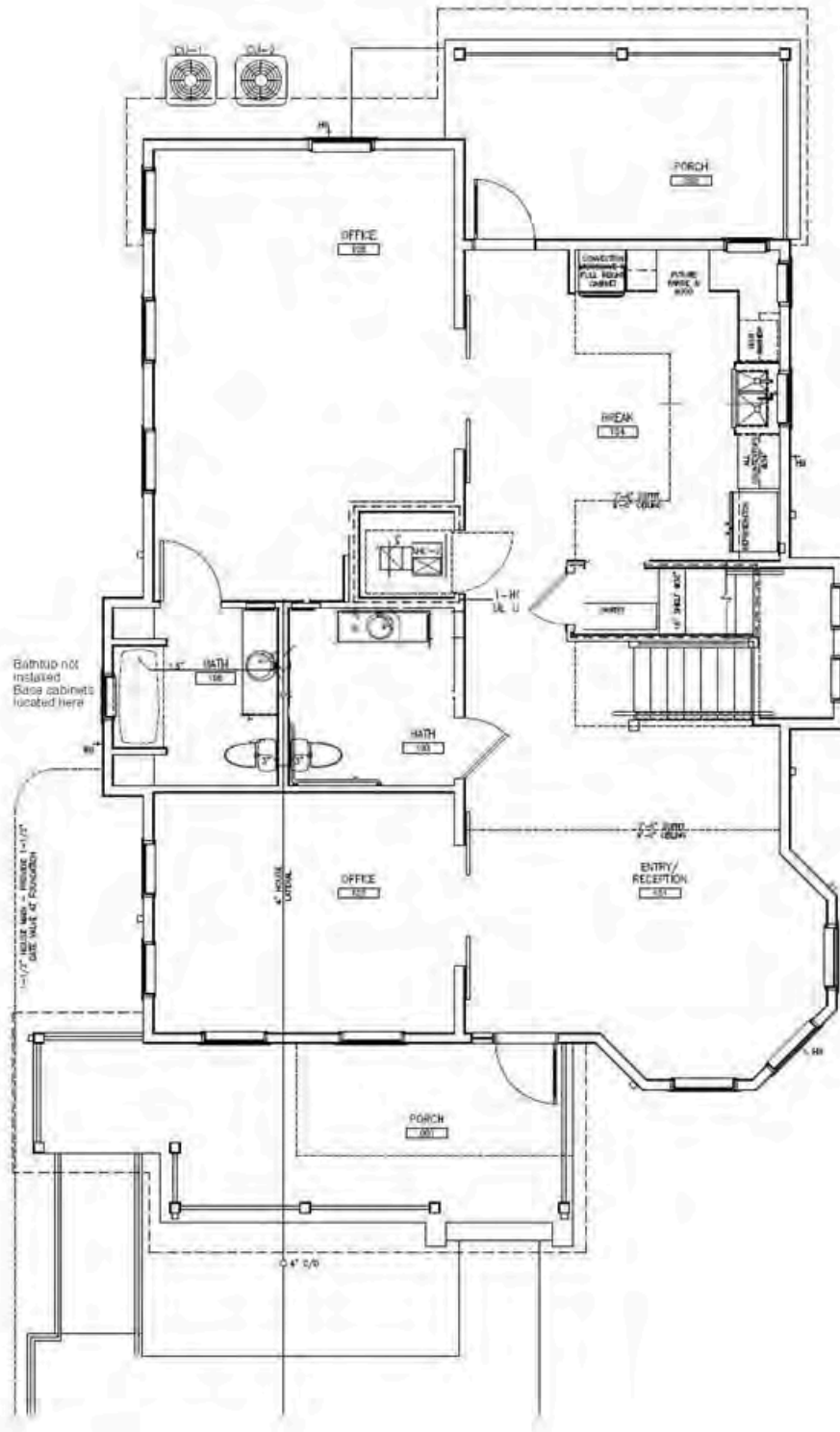






all photos copyright @ Costar





### First Floor



## Second Floor



210 E Church St. | Weatherford, 76086

Contact Brokers For Price



copyright @ Costar

Joseph Davidson || [jdavidson@dominuscommercial.com](mailto:jdavidson@dominuscommercial.com)  
Casey Borgers. || [cborgers@dominuscommercial.com](mailto:cborgers@dominuscommercial.com)



Dominus Commercial || 817.242.2361  
909 W Magnolia, Suite 2 || Fort Worth, TX 76104

My Information About Brokerage Services

This document has been prepared by Dominus Commercial, Inc for advertising and general information only. Dominus Commercial makes no guarantees, representations or warranties of any kind, expressed or implied, regarding the information including, but not limited to, warranties of content, accuracy and reliability. Any interested party should undertake their own inquiries as to the accuracy of the information. Dominus Commercial excludes unequivocally all inferred or implied terms, conditions and warranties arising out of this document and excludes all liability for loss and damages arising there from. © 2025 Dominus Commercial, Inc. All rights reserved.