

# FOR SALE

***Purchase Price:***  
**\$321,200**

- Unit 8C - 803+/- S.F.
- Direct access via stairs or elevator
- Open floor plan with two spacious private offices and front desk / reception
- Kitchenette
- Taxes- \$4,107/year (2025)
- Condo Fee- \$738/month (includes water, trash, sewer, CAM, landscaping)
- Zoned CRN
- One (1) reserved parking space included with additional parking available

***For more information call:***

**301.961.9696**

**Sam Farnum – Ext. 216**  
**sfarnum@amrcommercial.com**

**Gillin Smith – Ext. 209**  
**gsmith@amrcommercial.com**

***“Old Georgetown Office Park”***  
**7960 OLD GEORGETOWN ROAD**  
**BETHESDA, MARYLAND 20814**

**UNIT 8C – 803 S.F.**

***Includes two (2) executive sized offices, reception, open area and private bathroom.***



Located in downtown Bethesda near the intersection of Old Georgetown Road and Auburn Avenue, this office condo is ideal for a wide variety of commercial uses. Four blocks to Metro, ½ block to public parking garage, wheelchair accessible, and has elevator access.

Although all information furnished is from sources we deem reliable, such information has not been verified and no express representation is made, nor is any to be implied, as to the accuracy thereof, and it is submitted subject to errors, omissions, changes of price/rental or other conditions prior to sale or lease, and subject to withdrawal without notice.



ALEXANDER, MONTROSE, RITTENBERG  
Commercial Real Estate Brokerage  
Est. 1994

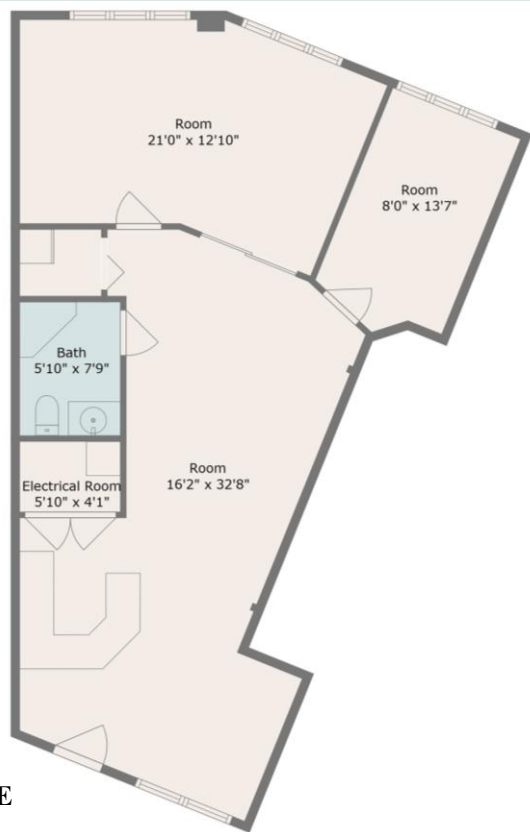
*Celebrating*  
**31**  
*Years*  
1994-2025



***"Old Georgetown Office Park"***  
**7960 OLD GEORGETOWN ROAD**  
**BETHESDA, MARYLAND 20814**

**UNIT 8C**  
**803 S.F.**

**NOT TO SCALE**  
**INTERIOR MEASUREMENTS APPROXIMATE**



Although all information furnished is from sources we deem reliable, such information has not been verified and no express representation is made, nor is any to be implied, as to the accuracy thereof, and it is submitted subject to errors, omissions, changes of price/rental or other conditions prior to sale or lease, and subject to withdrawal without notice.



**ALEXANDER, MONTROSE, RITTENBERG**  
Commercial Real Estate Brokerage  
Est. 1994

*Celebrating*  
**31** Years  
1994-2025

