

READY RIGHT NOW AT

ONESOUTH

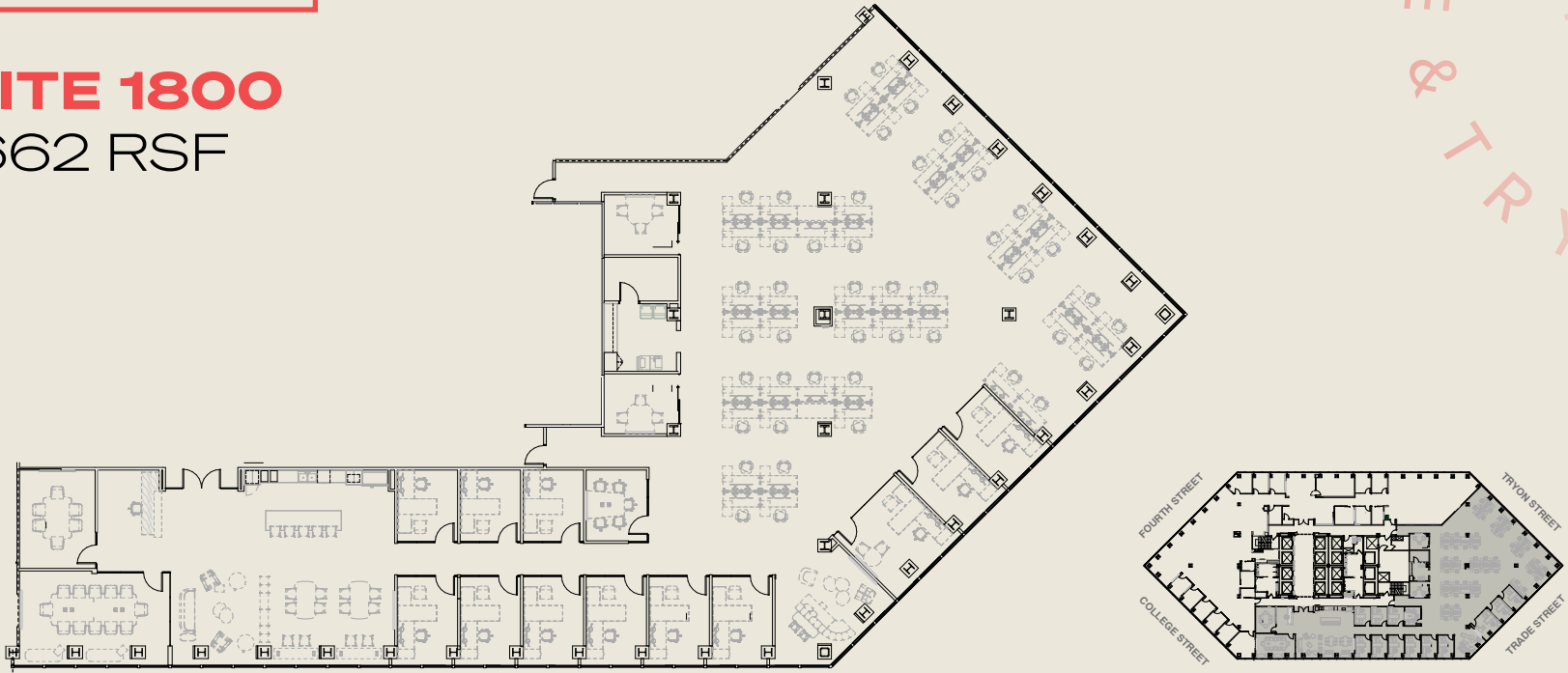
SPEC SUITES FROM 4,365 - 11,662 RSF

ONESOUTH
aloft
SOUTH
BY

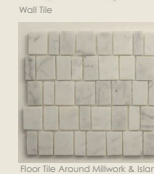
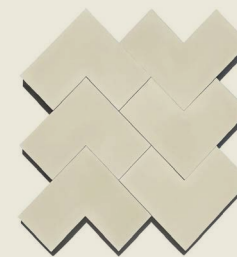


SUITE 1800

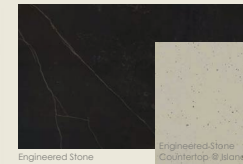
11,662 RSF



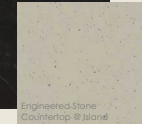
BREAK ROOM FINISHES



Floor Tile Around Millwork & Island



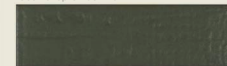
Engineered Stone
Countertop @ Back Wall



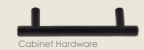
Engineered Stone
Countertop @ Island



(3) Pendant Fixtures over Island



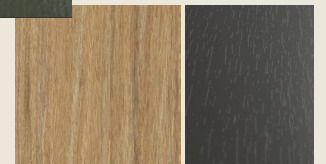
Accent Tile @ Face of Island



Cabinet Hardware

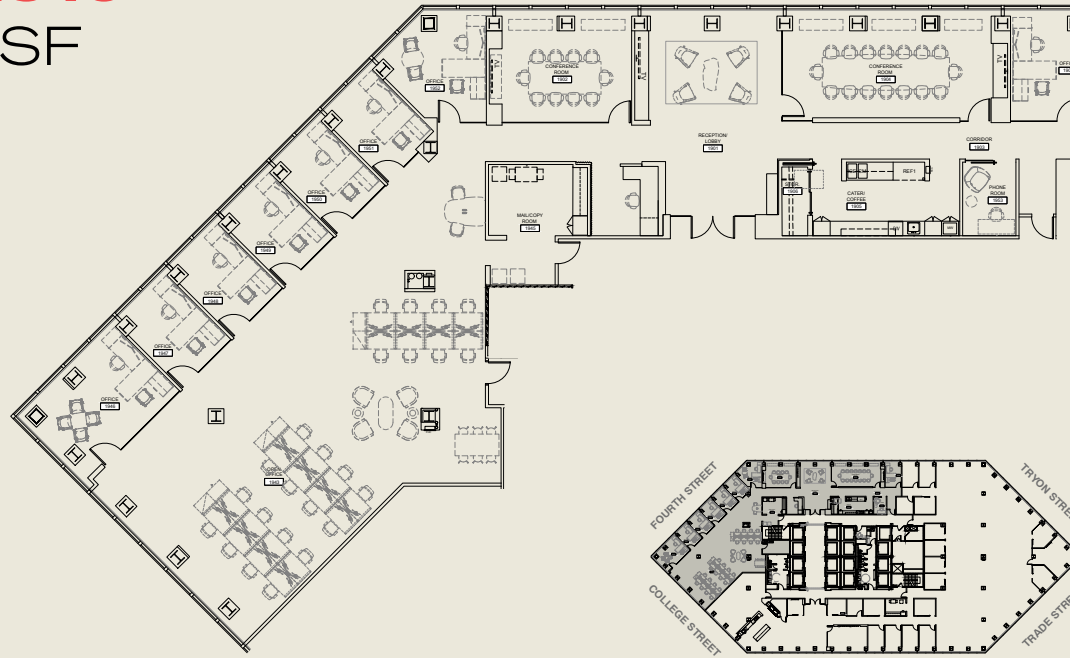


Accent Tile Behind Kegerator
& @ Face of Island



Plastic Laminate(s) @ Cabinet Faces

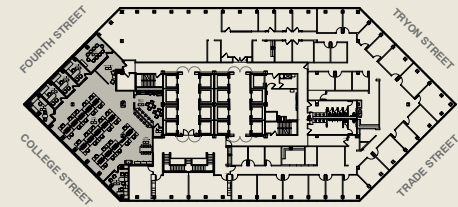
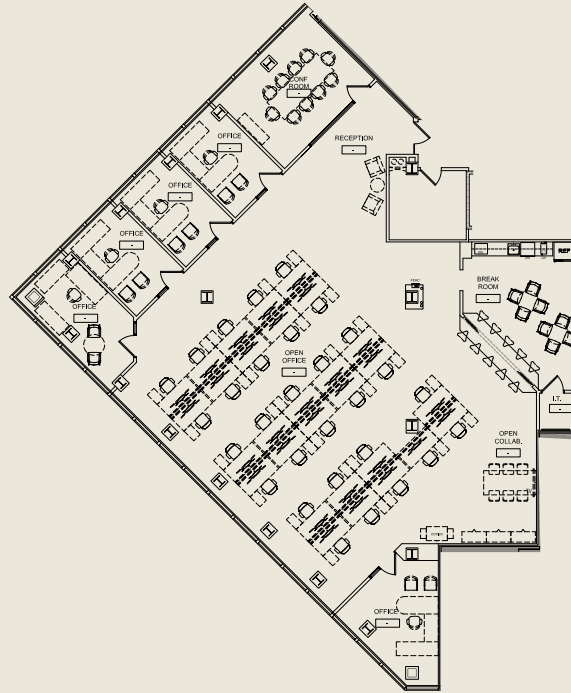
○ SUITE 1910
7,462 RSF



[CLICK TO VIEW
MATTERPORT](#)

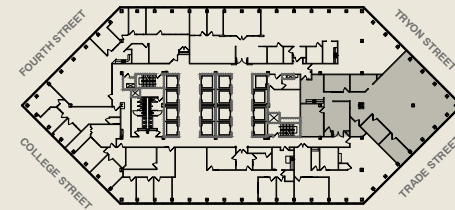
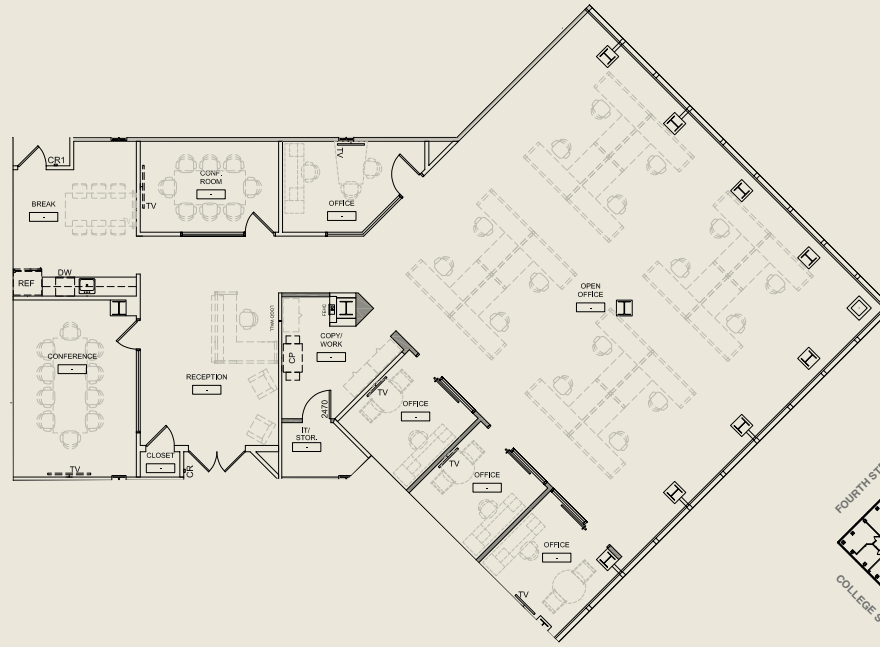
SUITE 2320

5,189 RSF



SUITE 2460

4,365 RSF



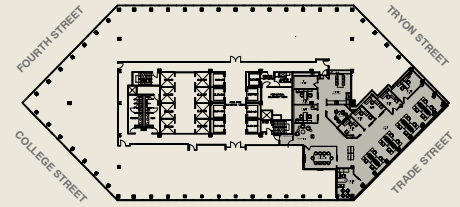
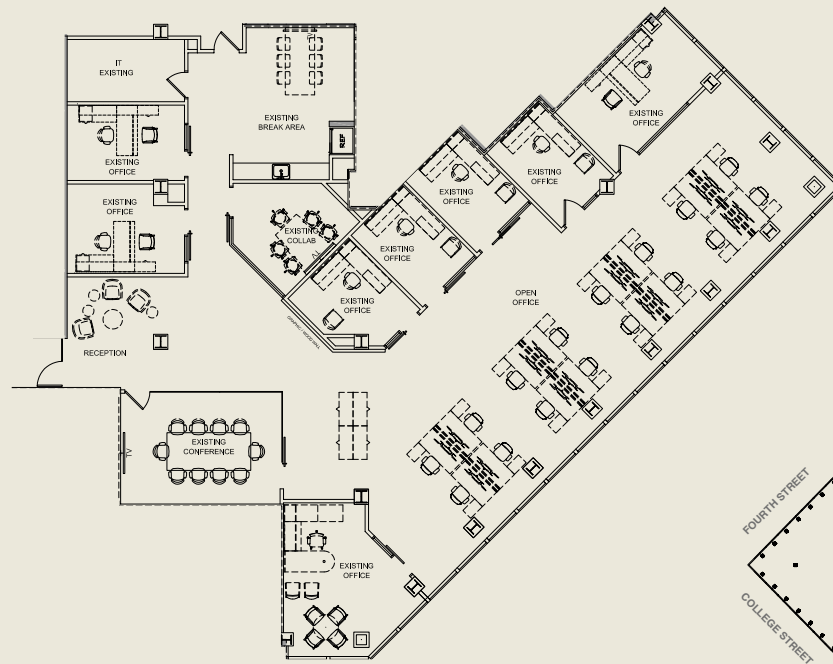
SOUTH



[CLICK TO VIEW MATTERPORT](#)

SUITE 2600

5,379 RSF



CLICK TO VIEW
MATTERPORT



Three
An experience by onsite

**FULL FLOOR
AMENITY LEVEL**

full-service experiences delivered
by hospitality trained staff and
enabled by technology.





ONESOUTH

101 South Tryon St. Charlotte, NC 28280
onesouthclt.com

Rhea Greene
rdg@trinity-partners.com
704.372.8822

John Hannon
jhannon@trinity-partners.com
704.813.7252

Tim Arnold
tarnold@trinity-partners.com
973.295.0404

MONARCH
ALTERNATIVE CAPITAL

Tourmaline

TRINITY
PARTNERS