



Colliers

Available For Lease

Asking Price:

**\$1.05** PSF

## 501 West 900 North North Salt Lake, 84054

23,150 SF Total

- 5,400 SF Office | 17,750 SF Warehouse
- Loading:
  - (2) 12' x 14' Ground Level Doors
  - (1) 8' x 10' Dock High Doors
- 1.13 total acreage
- 1/3 acre fenced yard
- Clear height: 20'
- Construction: 2002
- Zoning: MD (Manufacturing-Distribution)
- Power: 400 amps, 280 volt 3-phase
- Fire suppression: ESFR
- Access: convenient to I-15 and I-215
- Available for occupancy: November 1, 2025

### Contact:

**Jeremy Terry**

Vice President  
+1 801 671 9349  
jeremy.terry@colliers.com

**Skyler Smith**

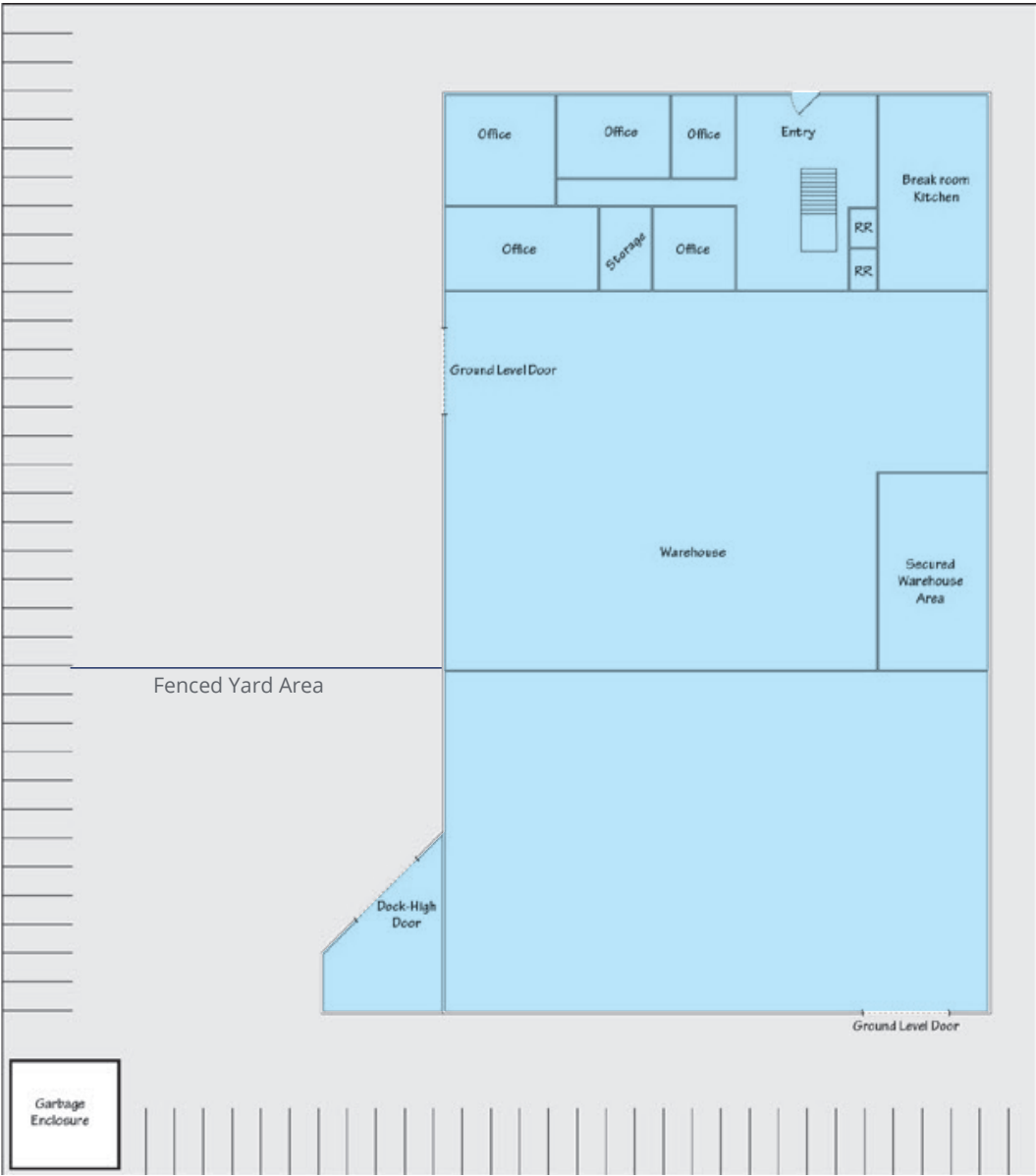
Senior Associate  
+1 801 441 5917  
skyler.smith@colliers.com

**Colliers**

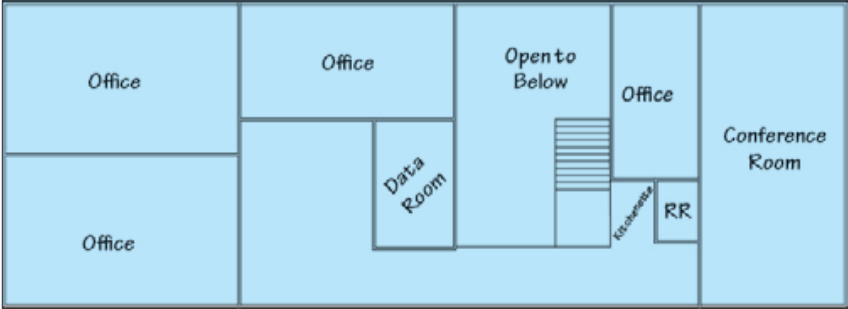
111 S. Main St., Suite 2200  
Salt Lake City, UT 84111  
Main: +1 801 947 8300  
colliers.com

Accelerating success.

Main Level Office

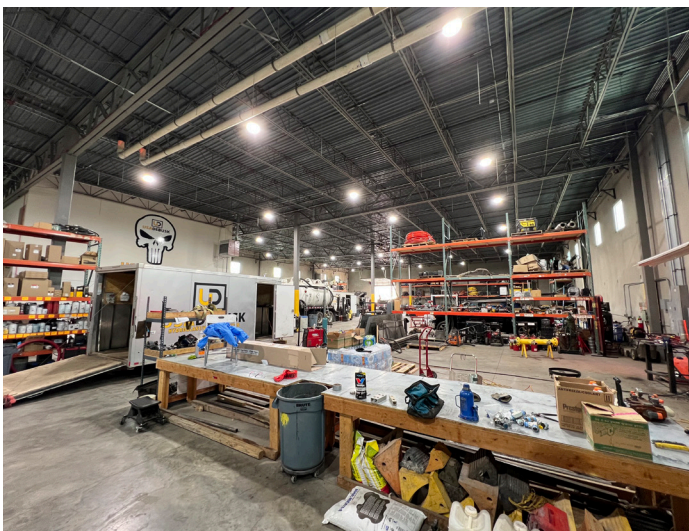


Second Level Office



# Photos

North Salt Lake Manufacturing | For Lease



North Salt Lake | For Lease

# Location



**Jeremy Terry**  
Vice President  
+1 801 671 9349  
jeremy.terry@colliers.com

**Skyler Smith**  
Senior Associate  
+1 801 441 5917  
skyler.smith@colliers.com

This document has been prepared by Colliers International for advertising and general information only. Colliers International makes no guarantees, representations or warranties of any kind, expressed or implied, regarding the information including, but not limited to, warranties of content, accuracy and reliability. Any interested party should undertake their own inquiries as to the accuracy of the information. Colliers International excludes unequivocally all inferred or implied terms, conditions and warranties arising out of this document and excludes all liability for loss and damages arising there from. This publication is the copyrighted property of Colliers International and/or its licensor(s). ©2025. All rights reserved.