

FOR LEASE

7711 Hoke Road Clayton, OH 45315

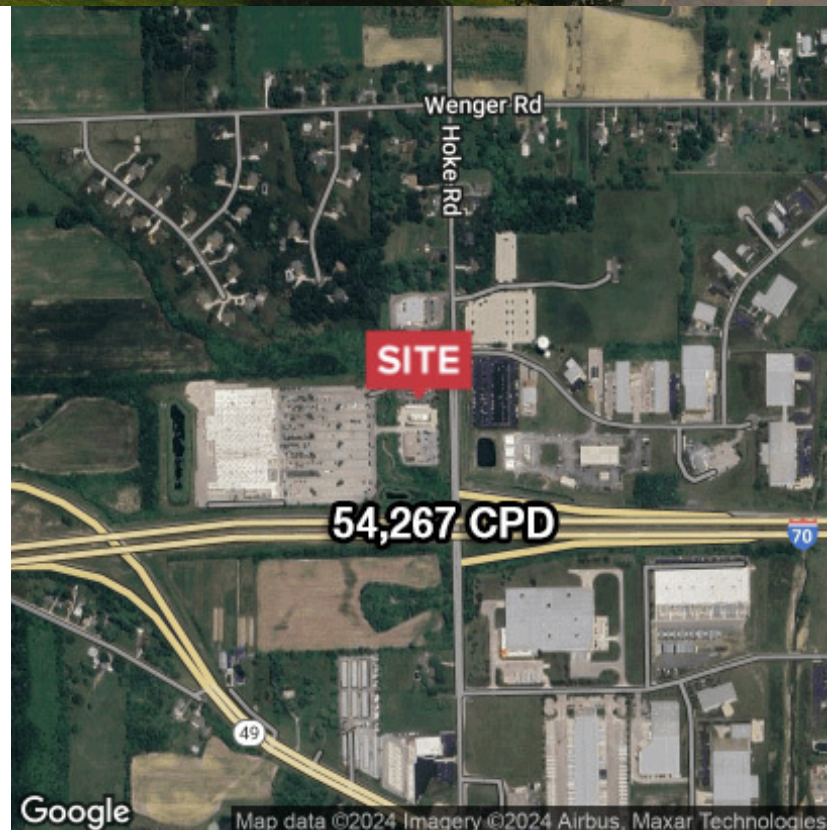


Retail | 1,736 SF

- Located Directly in Front of Walmart
- Drive Thru / Pickup Window
- 2 Hood Ventilation Systems
- 2 Walk In Freezers
- Direct Access to I-70 / 54,000 CPD
- Contact Broker For Pricing

DEMOGRAPHICS

STATS	POPULATION	AVG. HH INCOME
1 MILE	1,947	\$144,141
3 MILES	26,819	\$110,448
5 MILES	56,808	\$97,689



FOR LEASE

7711 Hoke Road Clayton, OH 45315

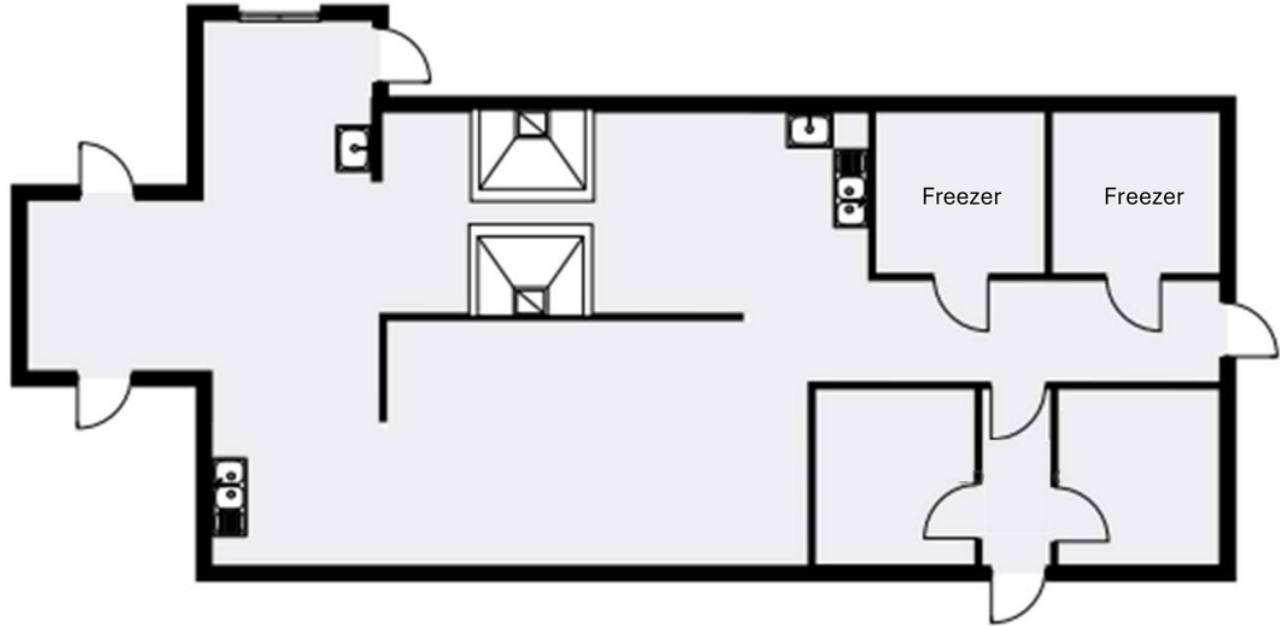


✉ Hayden Batchelor
+1 513 322 6318
hbatchelor@bergman-group.com

NAI Bergman

FOR LEASE

7711 Hoke Road Clayton, OH 45315



FEATURES:

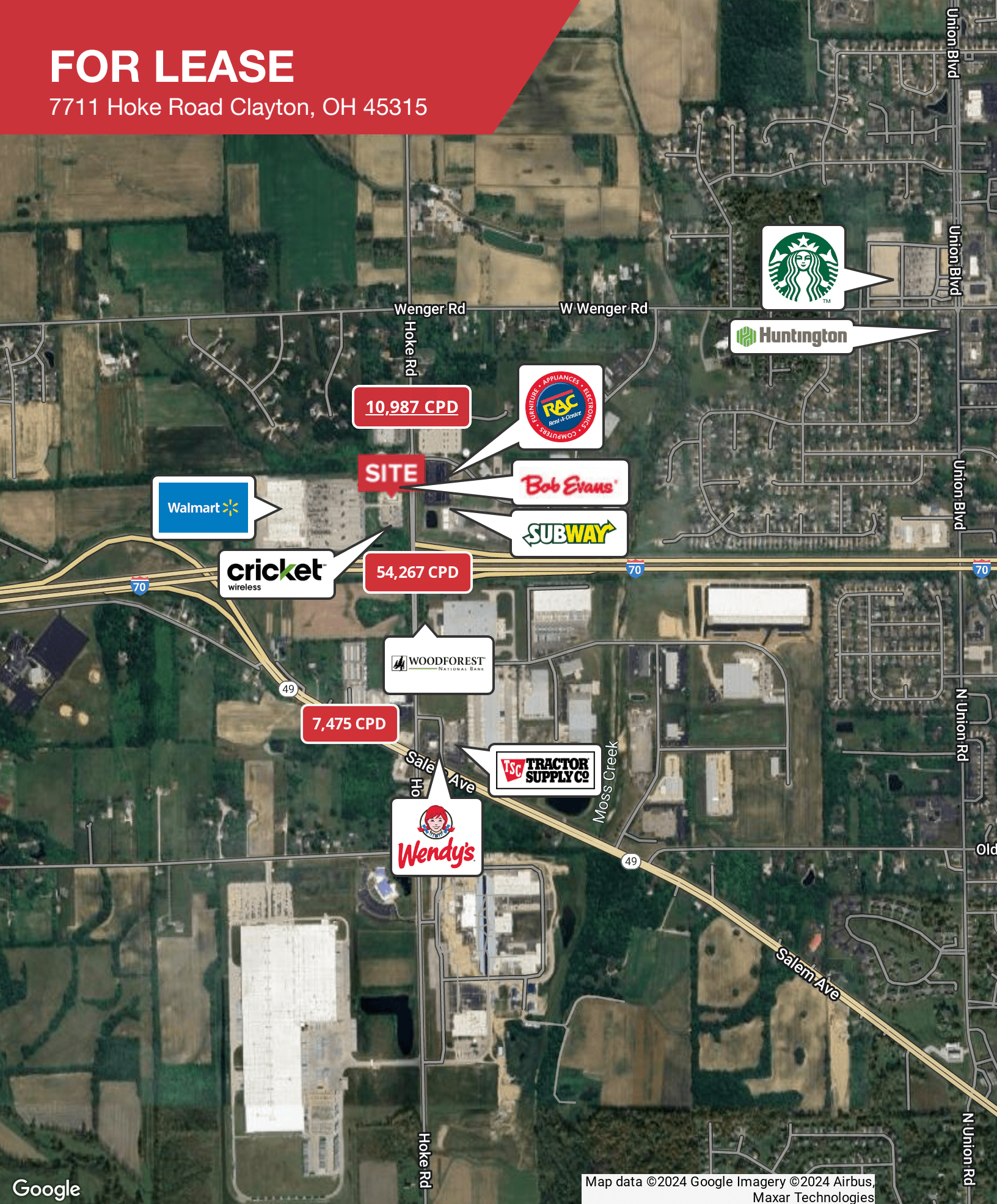
- 23 Covered Car Ports
- Drive Thru Window with POS Hook-Up
- Large Metal Awning For Outdoor Eating Space
- Fenced In Dumpster Area
- Ample Parking / Wide Drive Thru
- Two (2) Bathrooms - Likely ADA Compliant

EQUIPMENT:

- Two (2) Approximately 8 x 8 x 8 Foot Walk-In Freezers
- Two (2) Approximately 6 Foot Hood Ventilation Systems
- Two (2) Separate Three Compartment Sinks / Sanitization Stations
- Three (3) Single Compartment Sinks
- Numerous Water Hook-Up Lines

FOR LEASE

7711 Hoke Road Clayton, OH 45315



Google

Map data ©2024 Google Imagery ©2024 Airbus, Maxar Technologies

✉ Hayden Batchelor
+1 513 322 6318
hbatchelor@bergman-group.com

NAIBergman

FOR LEASE

7711 Hoke Road Clayton, OH 45315

Summary Profile

2010-2020 Census, 2023 Estimates with 2028 Projections
Calculated using Weighted Block Centroid from Block Groups



Lat/Lon: 39.8569/-84.3313

7711 Hoke Rd Clayton, OH 45315	1 mi radius	3 mi radius	5 mi radius
Population			
2023 Estimated Population	1,947	26,819	56,808
2028 Projected Population	1,986	27,438	57,782
2020 Census Population	1,941	27,411	58,072
2010 Census Population	1,887	27,797	58,387
Projected Annual Growth 2023 to 2028	0.4%	0.5%	0.3%
Historical Annual Growth 2010 to 2023	0.2%	-0.3%	-0.2%
2023 Median Age	45.1	41.6	42.9
Households			
2023 Estimated Households	774	11,380	24,714
2028 Projected Households	775	11,422	24,668
2020 Census Households	739	11,238	24,491
2010 Census Households	713	11,176	24,097
Projected Annual Growth 2023 to 2028	-	-	-
Historical Annual Growth 2010 to 2023	0.7%	0.1%	0.2%
Income			
2023 Estimated Average Household Income	\$144,141	\$110,448	\$97,689
2023 Estimated Median Household Income	\$97,093	\$78,070	\$69,031
2023 Estimated Per Capita Income	\$57,726	\$46,970	\$42,605
Education (Age 25+)			
2023 Estimated Elementary (Grade Level 0 to 8)	2.2%	1.1%	1.6%
2023 Estimated Some High School (Grade Level 9 to 11)	2.7%	3.0%	3.4%
2023 Estimated High School Graduate	32.6%	27.4%	30.3%
2023 Estimated Some College	18.5%	23.8%	22.9%
2023 Estimated Associates Degree Only	10.5%	12.0%	11.5%
2023 Estimated Bachelors Degree Only	14.0%	19.8%	18.1%
2023 Estimated Graduate Degree	19.5%	13.0%	12.1%
Business			
2023 Estimated Total Businesses	88	728	1,552
2023 Estimated Total Employees	1,533	8,828	17,383
2023 Estimated Employee Population per Business	17.4	12.1	11.2
2023 Estimated Residential Population per Business	22.2	36.9	36.6

©2024, Sites USA, Chandler, Arizona, 480-491-1112 Demographic Source: Applied Geographic Solutions 11/2023, TIGER Geography - RS1

This report was produced using data from private and government sources deemed to be reliable. The information herein is provided without representation or warranty.