

Property For Sale

2407-2411 150th Street Whitestone NY, 11357

2407-2411 150th Street Whitestone, NY 11357



For More Information:

Steven Llorens

Licensed Associate Real Estate Broker
Douglas Elliman Commercial - Long Island
718.819.4041
steven.llorens@elliman.com

Andreas Nakos

Licensed Real Estate Salesperson
Douglas Elliman Commercial - Long Island
718.819.4035
andreas.nakos@elliman.com

WWW.ELLIMANCOMMERCIAL.COM

THE PROPERTY CONTAINED WITHIN THIS DOCUMENT IS BEING EXCLUSIVELY REPRESENTED BY DOUGLAS ELLIMAN REAL ESTATE COMMERCIAL DIVISION, 650 SMITHTOWN BYPASS STE. 117 SMITHTOWN, NY 11787 631 858-2405 © 2023 DOUGLAS ELLIMAN COMMERCIAL OF LI, L.L.C. ALL MATERIAL PRESENTED HEREIN IS INTENDED FOR INFORMATION PURPOSES ONLY. WHILE THIS INFORMATION IS BELIEVED TO BE CORRECT, IT IS REPRESENTED SUBJECT TO ERRORS, OMISSIONS, CHANGES OR WITHDRAWAL WITHOUT NOTICE. ALL PROPERTY INFORMATION, INCLUDING, BUT NOT LIMITED TO SQUARE FOOTAGE, ROOM COUNT, ZONING IN THE LISTING SHOULD BE VERIFIED BY YOUR OWN ATTORNEY, ARCHITECT OR ZONING EXPERT. IF YOUR PROPERTY IS CURRENTLY LISTED WITH ANOTHER REAL ESTATE BROKER, PLEASE DISREGARD THIS OFFER. IT IS NOT OUR INTENTION TO SOLICIT THE OFFERINGS OF OTHER REAL ESTATE BROKERS. WE COOPERATE WITH THEM FULLY. EQUAL HOUSING OPPORTUNITY.



Retail Property For Sale

2407-2411 150th Street Whitestone, NY 11357



Offering Summary

Sale Price:	\$11,500,000
Building Size:	12,000 SF
Available SF:	
Lot Size:	0.3 Acres
Number of Units:	1
Price / SF:	\$958.33
Cap Rate:	4.52%
NOI:	\$520,000
Year Built:	2019
Zoning:	R3-1 C1-2

Property Overview

Discover an exceptional investment opportunity in this meticulously maintained 12,000 SF building at 2407-2411 150th Street, Whitestone, NY, 11357. Boasting a prime corner location, this property features a single unit occupied by the Met Fresh Supermarket under a long-term NNN lease with a 10-year option. Built in 2019 and benefiting from 100% occupancy, this high-visibility retail space presents a strong addition to any investor's portfolio. Zoned R3-1 C1-2, this property offers a lucrative prospect for retail/street retail investors seeking a stable and rewarding asset in the dynamic Northeast Queens market.

Property Highlights

- Prime Corner Location
- Met Fresh Supermarket as NNN Tenant
- Long-term lease w/10yr. option
- High Visibility Location

For More Information:

Steven Llorens

Licensed Associate Real Estate Broker
 Douglas Elliman Commercial - Long Island
 718.819.4041
 steven.llorens@elliman.com

Andreas Nakos

Licensed Real Estate Salesperson
 Douglas Elliman Commercial - Long Island
 718.819.4035
 andreas.nakos@elliman.com



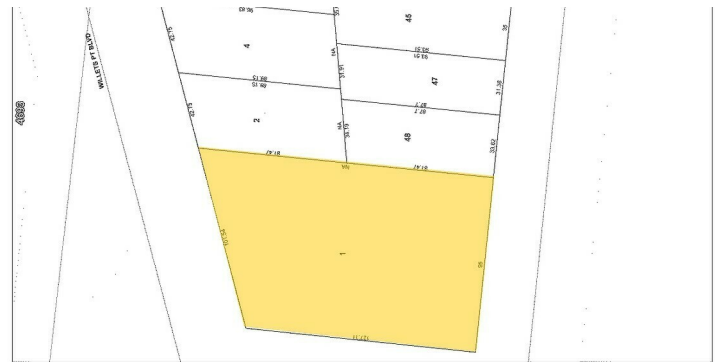
WWW.ELLIMANCOMMERCIAL.COM

THE PROPERTY CONTAINED WITHIN THIS DOCUMENT IS BEING EXCLUSIVELY REPRESENTED BY DOUGLAS ELLIMAN REAL ESTATE COMMERCIAL DIVISION, 550 SMITHTOWN BYPASS STE. 117 SMITHTOWN, NY 11787 631.858.2405 © 2023 DOUGLAS ELLIMAN COMMERCIAL OF LI, LLC. ALL MATERIAL PRESENTED HEREIN IS INTENDED FOR INFORMATION PURPOSES ONLY. WHILE THIS INFORMATION IS BELIEVED TO BE CORRECT, IT IS REPRESENTED SUBJECT TO ERRORS, OMISSIONS, CHANGES OR WITHDRAWAL WITHOUT NOTICE. ALL PROPERTY INFORMATION, INCLUDING, BUT NOT LIMITED TO SQUARE FOOTAGE, ROOM COUNT, ZONING IN THE LISTING SHOULD BE VERIFIED BY YOUR OWN ATTORNEY, ARCHITECT OR ZONING EXPERT. IF YOUR PROPERTY IS CURRENTLY LISTED WITH ANOTHER REAL ESTATE BROKER, PLEASE DISREGARD THIS OFFER. IT IS NOT OUR INTENTION TO SOLICIT THE OFFERINGS OF OTHER REAL ESTATE BROKERS. WE COOPERATE WITH THEM FULLY. EQUAL HOUSING OPPORTUNITY.



Retail Property For Sale

2407-2411 150th Street Whitestone, NY 11357



For More Information:

Steven Llorens

Licensed Associate Real Estate Broker
Douglas Elliman Commercial - Long Island
718.819.4041
steven.llorens@elliman.com

Andreas Nakos

Licensed Real Estate Salesperson
Douglas Elliman Commercial - Long Island
718.819.4035
andreas.nakos@elliman.com

Douglas Elliman
Commercial

WWW.ELLIMANCOMMERCIAL.COM

THE PROPERTY CONTAINED WITHIN THIS DOCUMENT IS BEING EXCLUSIVELY REPRESENTED BY DOUGLAS ELLIMAN REAL ESTATE COMMERCIAL DIVISION, 550 SMITHTOWN BYPASS STE. 117 SMITHTOWN, NY 11787 631.858.2405 © 2023 DOUGLAS ELLIMAN COMMERCIAL OF LI, LLC. ALL MATERIAL PRESENTED HEREIN IS INTENDED FOR INFORMATION PURPOSES ONLY. WHILE THIS INFORMATION IS BELIEVED TO BE CORRECT, IT IS REPRESENTED SUBJECT TO ERRORS, OMISSIONS, CHANGES OR WITHDRAWAL WITHOUT NOTICE. ALL PROPERTY INFORMATION, INCLUDING, BUT NOT LIMITED TO SQUARE FOOTAGE, ROOM COUNTY, ZONING IN THE LISTING SHOULD BE VERIFIED BY YOUR OWN ATTORNEY, ARCHITECT OR ZONING EXPERT. IF YOUR PROPERTY IS CURRENTLY LISTED WITH ANOTHER REAL ESTATE BROKER, PLEASE DISREGARD THIS OFFER. IT IS NOT OUR INTENTION TO SOLICIT THE OFFERINGS OF OTHER REAL ESTATE BROKERS. WE COOPERATE WITH THEM FULLY. EQUAL HOUSING OPPORTUNITY.



Retail Property For Sale

2407-2411 150th Street Whitestone, NY 11357



For More Information:

Steven Llorens

Licensed Associate Real Estate Broker
Douglas Elliman Commercial - Long Island
718.819.4041
steven.llorens@elliman.com

Andreas Nakos

Licensed Real Estate Salesperson
Douglas Elliman Commercial - Long Island
718.819.4035
andreas.nakos@elliman.com



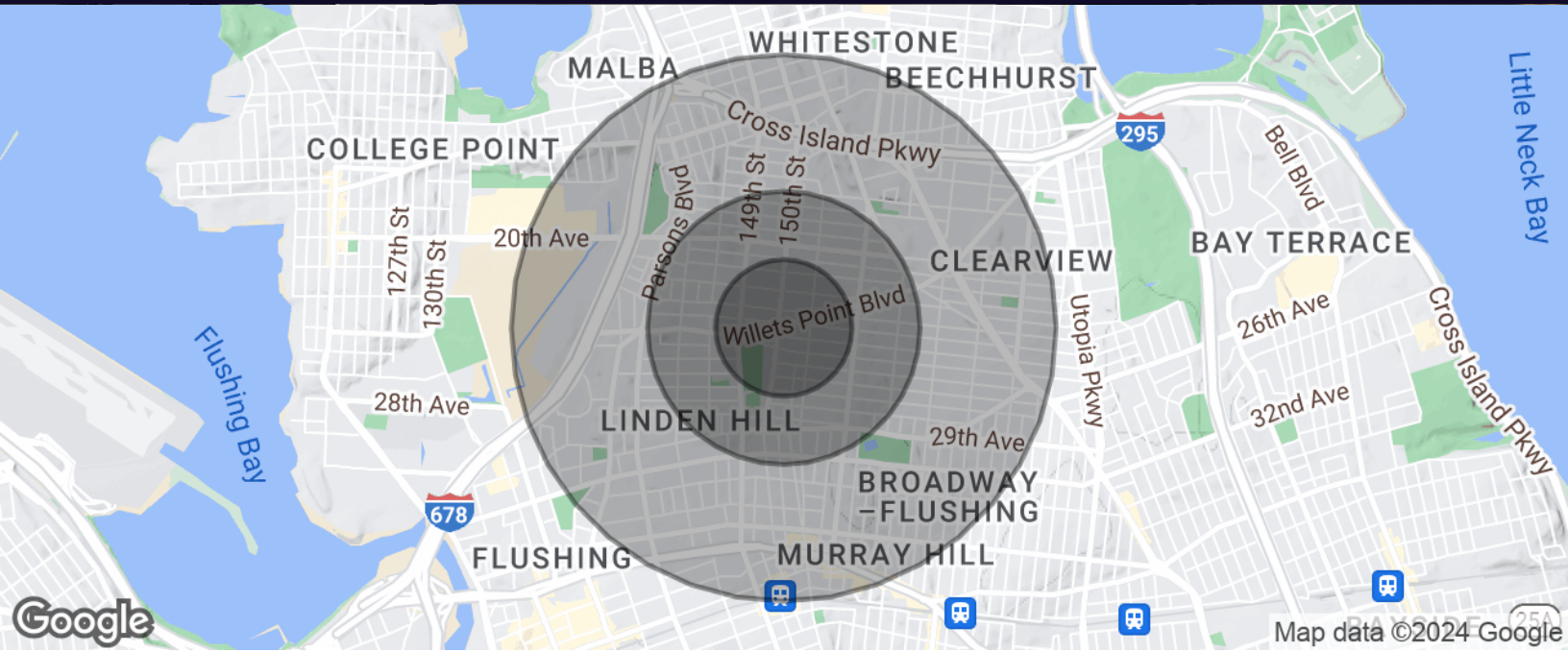
WWW.ELLIMANCOMMERCIAL.COM

THE PROPERTY CONTAINED WITHIN THIS DOCUMENT IS BEING EXCLUSIVELY REPRESENTED BY DOUGLAS ELLIMAN REAL ESTATE COMMERCIAL DIVISION, 550 SMITHTOWN BYPASS STE. 117 SMITHTOWN, NY 11787 631.858.2405 © 2023 DOUGLAS ELLIMAN COMMERCIAL OF LI, LLC. ALL MATERIAL PRESENTED HEREIN IS INTENDED FOR INFORMATION PURPOSES ONLY. WHILE THIS INFORMATION IS BELIEVED TO BE CORRECT, IT IS REPRESENTED SUBJECT TO ERRORS, OMISSIONS, CHANGES OR WITHDRAWAL WITHOUT NOTICE. ALL PROPERTY INFORMATION, INCLUDING, BUT NOT LIMITED TO SQUARE FOOTAGE, ROOM COUNT, ZONING IN THE LISTING SHOULD BE VERIFIED BY YOUR OWN ATTORNEY, ARCHITECT OR ZONING EXPERT. IF YOUR PROPERTY IS CURRENTLY LISTED WITH ANOTHER REAL ESTATE BROKER, PLEASE DISREGARD THIS OFFER. IT IS NOT OUR INTENTION TO SOLICIT THE OFFERINGS OF OTHER REAL ESTATE BROKERS. WE COOPERATE WITH THEM FULLY. EQUAL HOUSING OPPORTUNITY.



Retail Property For Sale

2407-2411 150th Street Whitestone, NY 11357



Population	0.25 Miles	0.5 Miles	1 Mile
Total Population	3,517	14,549	63,848
Average Age	46.1	45.4	46.2
Average Age (Male)	44.6	43.2	43.8
Average Age (Female)	46.6	46.5	48.0

Households & Income	0.25 Miles	0.5 Miles	1 Mile
Total Households	1,202	5,352	24,960
# of Persons per HH	2.9	2.7	2.6
Average HH Income	\$90,603	\$88,324	\$78,301
Average House Value	\$838,653	\$841,191	\$650,027

For More Information:

Steven Llorens

Licensed Associate Real Estate Broker
Douglas Elliman Commercial - Long Island
718.819.4041
steven.llorens@elliman.com

Andreas Nakos

Licensed Real Estate Salesperson
Douglas Elliman Commercial - Long Island
718.819.4035
andreas.nakos@elliman.com



WWW.ELLIMANCOMMERCIAL.COM

THE PROPERTY CONTAINED WITHIN THIS DOCUMENT IS BEING EXCLUSIVELY REPRESENTED BY DOUGLAS ELLIMAN REAL ESTATE COMMERCIAL DIVISION, 550 SMITHTOWN BYPASS STE. 117 SMITHTOWN, NY 11787 631.858.2405 © 2023 DOUGLAS ELLIMAN COMMERCIAL OF LI, LLC. ALL MATERIAL PRESENTED HEREIN IS INTENDED FOR INFORMATION PURPOSES ONLY. WHILE THIS INFORMATION IS BELIEVED TO BE CORRECT, IT IS REPRESENTED SUBJECT TO ERRORS, OMISSIONS, CHANGES OR WITHDRAWAL WITHOUT NOTICE. ALL PROPERTY INFORMATION, INCLUDING, BUT NOT LIMITED TO SQUARE FOOTAGE, ROOM COUNT, ZONING IN THE LISTING SHOULD BE VERIFIED BY YOUR OWN ATTORNEY, ARCHITECT OR ZONING EXPERT. IF YOUR PROPERTY IS CURRENTLY LISTED WITH ANOTHER REAL ESTATE BROKER, PLEASE DISREGARD THIS OFFER. IT IS NOT OUR INTENTION TO SOLICIT THE OFFERINGS OF OTHER REAL ESTATE BROKERS. WE COOPERATE WITH THEM FULLY. EQUAL HOUSING OPPORTUNITY.

WE ARE COMMERCIAL REAL ESTATE

Commercial real estate involves more than just property listings. To get the most effective results, you need to partner with a company that has a full complement of services and an in-depth team of professionals to help with all of your needs. Douglas Elliman's team of commercial real estate experts is committed to unrivaled performance standards when working with tenants, investors, purchasers and owners. We represent all major property types including office, industrial, retail, apartment and land. We treat each other each assignment with commitment and focus, from a single transaction in a local market to national and multi-market assignments. We help negotiate contracts, coordinate construction and provide both property management as well as ongoing advisory service to satisfy your changing real estate needs. Our breadth of market knowledge, unprecedented network and use of innovative technology extend to all types of property transactions.

For More Information:

Steven Llorens

Licensed Associate Real Estate Broker
718.819.4041
steven.llorens@elliman.com

Andreas Nakos

Licensed Real Estate Salesperson
718.819.4035
andreas.nakos@elliman.com

Office: 631.858.2405
Fax: 631.543.0851
550 Smithtown Bypass
Smithtown, NY 11787