

ARI MENCIAS
CADRE# 02085900
310-943-8534
Ari@cbi-commercial.com



3901 Broadway Pl,
Los Angeles, CA 90037

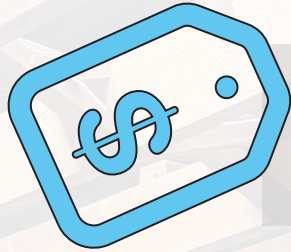
Commercial Brokers International

FOR SALE

7,318 SF of Industrial Warehouse



PROPERTY OVERVIEW



+/- \$1.50 psf MG

PROPERTY DESCRIPTION

PROPERTY ADDRESS

3901 Broadway Pl

CITY, STATE, ZIP

Los Angeles, CA 90037

BUILDING SIZE

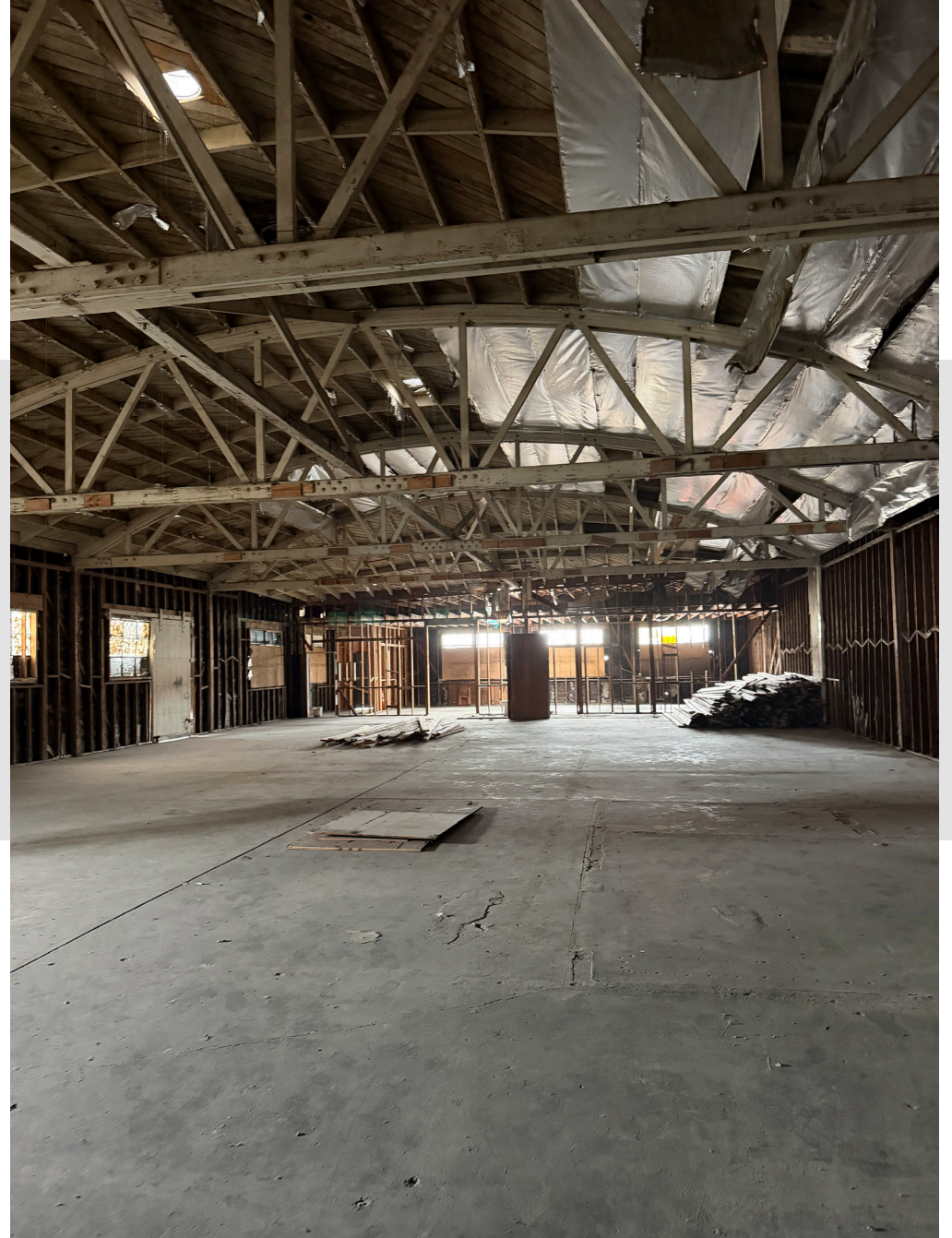
7,318 SF

USAGE

2 Star Industrial Warehouse

Situated at 3901 Broadway Pl in the heart of **South LA**, this warehouse puts accessibility front and center. You're less than a mile from **Exposition Park** — home to the **California Science Center**, the **Natural History Museum**, and the iconic **LA Coliseum** — making it a natural stopping point for visitors already in the area. **USC's** campus is just minutes north, and the buzz of **Mercado La Paloma** (home to **Michelin-starred Holbox**) is right around the corner.

PROPERTY PICTURES



You acknowledge that neither Tenant, Owner, nor Commercial Brokers International has made any representations or warranties as to the accuracy or completeness of the materials and these materials are subject to, among other things, correction of errors and omissions, deletions or change in terms, accuracy of photos or renderings. Any information contained herein is not a substitute for a thorough due diligence investigation by any prospective client. This marketing has been prepared to provide summary information (some of which may not be verified) to the prospective tenants and to establish a preliminary level of interest in the subject property. The information contained herein has been obtained from sources we believe to be reliable; however, has not been verified by CBI, Tenant, or the Owner.

Prospective clients are advised to conduct their own investigations into the property, including but not limited to: Proposed use, the size and square footage of the property and any improvements; compliance with any Local, State, or Federal law and/or regulations; the presence or absence of any contaminating substances; the physical condition of any improvements.



COMMERCIAL
BROKERS
INTERNATIONAL

11766 Wilshire Blvd #1120, Los Angeles, CA 90025



LISTED BY:

ARI MENCIAS

CADRE #02085900

ARI@CBI-COMMERCIAL.COM

310.943.8534



11766 WILSHIRE BOULEVARD, SUITE 1120,
LOS ANGELES, CA 90025 UNITED STATES
CA DRE #01523713
310.943.8530
INFO@CBICOMMERCIAL.COM